

CHISTOCHINA (CZO) 0 SW UTC-9(-BDT) N62°33.74' W144°40.35'

ANCHORAGE

1861 NOTAM FILE ENA

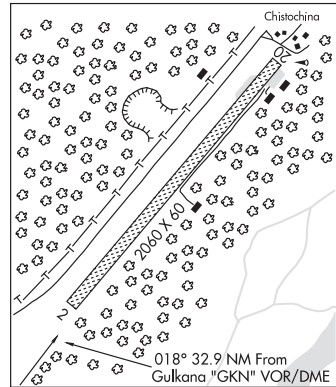
RWY 02-20: 2060X60 (TURF-GRVL) 0.4% up NE**RWY 02:** Trees.**RWY 20:** Tree.

AIRPORT REMARKS: Unattended. Rwy infrequently maintained and condition not monitored, recommend visual inspection prior to landing. Highway 1 parallels west edge of rwy. Grass, forbs and willows to 36". Soft when wet. Rwy 02 and Rwy 20 thlds marked with reflective orange cones.

AIRPORT MANAGER: 907-822-3222**WEATHER DATA SOURCES:** (WX CAM) (TWEB GKN 115.6).**COMMUNICATIONS:** CTAF 122.9**RADIO AIDS TO NAVIGATION:** NOTAM FILE GKN.

GULKANA (H) ABVORWDM 115.6 GKN Chan 103 N62°09.23' W145°26.84' 018° 32.8 NM to fid. 1549/23E. **TWEB.**

COMM/NAV/WEATHER REMARKS: For a toll free call to Kenai FSS dial 1-866-864-1737.

**CHITINA (CXC)** 4 N UTC-9(-BDT) N61°34.99' W144°25.79'

ANCHORAGE

556 NOTAM FILE ENA

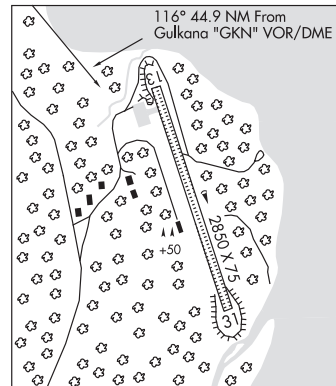
RWY 13-31: 2850X75 (GRVL-DIRT)**RWY 31:** Rgt tfc.

AIRPORT REMARKS: Unattended. Rwy condition not monitored, recommend visual inspection prior to landing. Shoulders slope off each side of rwy. 20' gravel ridge on west side of rwy. Rwy 31 slopes downhill, no line of sight btn rwy ends.

AIRPORT MANAGER: 907-822-3222**WEATHER DATA SOURCES:** (WX CAM) (TWEB GKN 115.6).**COMMUNICATIONS:** CTAF 122.9**RADIO AIDS TO NAVIGATION:** NOTAM FILE GKN.

GULKANA (H) ABVORWDM 115.6 GKN Chan 103 N62°09.23' W145°26.84' 116° 44.9 NM to fid. 1549/23E. **TWEB.**

COMM/NAV/WEATHER REMARKS: For a toll free call to Kenai FSS dial 1-866-864-1737.

**CHRISTIANSEN LAKE SPB** (See TALKEETNA on page 231)