

**WINDSOR LOCKS**

**BRADLEY INTL** (BDL)(KBDL) P (ANG ARNG) 3 W UTC-5(-4DT) N41°56.35'

**NEW YORK**

W72°41.00'

H-101, 11D, 12K, L-33C, 34I

173 B TPA—See Remarks LRA Class I, ARFF Index D NOTAM FILE BDL

IAP, AD

**RWY 06-24:** H9810X200 (ASPH-GRVD) S-200, D-200, 2S-175, 2D-350, 2D/2D2-710 HIRL CL

**RWY 06:** ALSF2. TDZL. REIL. PAPI(P4L)—GA 3.0° TCH 71'. RVR-TMR Trees.

**RWY 24:** MALS. TDZL. PAPI(P4L)—GA 3.0° TCH 71'. RVR-TMR Trees.

**RWY 15-33:** H6847X150 (ASPH-GRVD) S-200, D-200, 2S-175, 2D-350 HIRL

**RWY 15:** REIL. PAPI(P4L)—GA 3.5° TCH 61'. RVR-R Trees.

**RWY 33:** MALS. PAPI(P4R)—GA 3.0° TCH 72'. RVR-T Trees.

**RWY 01-19:** H4269X100 (ASPH) S-60, D-190, 2S-175, 2D-328 MIRL

**RWY 01:** Thld dsplcd 476'. Acft.

**RWY 19:** Trees.

**LAND AND HOLD—SHORT OPERATIONS**

LDG RWY	HOLD—SHORT POINT	AVBL LDG DIST
RWY 06	01-19	6000
RWY 24	15-33	5850
RWY 33	06-24	4550

**RUNWAY DECLARED DISTANCE INFORMATION**

<b>RWY 01:</b> TORA-4268 TODA-4268 ASDA-4268
<b>RWY 06:</b> TORA-9509 TODA-9509 ASDA-9509 LDA-9509
<b>RWY 15:</b> TORA-6847 TODA-6847 ASDA-6847 LDA-6847
<b>RWY 19:</b> LDA-4268
<b>RWY 24:</b> TORA-9509 TODA-9509 ASDA-9509 LDA-9509
<b>RWY 33:</b> TORA-6847 TODA-6847 ASDA-6847 LDA-6847

**SERVICE:** S4 **FUEL** 100LL, JET A **OX** 1, 2, 3, 4 **LGT** Unmonitored when alfd lsd. Afd ops ltd to tenant acft when afd clsd.

**MILITARY—JASU** (MD)-3 **FUEL** A++(Mil) A, A+ (C860-627-3300.) (NC-100LL) **FLUID** SP LOX **OIL** O-128-133-148 (Mil) SOAP

**AIRPORT REMARKS:** Attended continuously. Numerous birds freq on or invof arpt. No trng flts, no practice apchs, no touch and go ldrs btn Mon-Sat 0400-1200Z and Sun 0400-1700Z. Exc for taxiing, Rwy 01-19 open for acft with wingspan less than 79'. Rwy 01 clsd for arrivals to all fixed wing acft. Rwy 19 clsd for dep to all fixed wing acft. Twy J clsd btn Twy S and Twy R to acft with wingspans in excess of 171'. BASH Phase II increased bird activity Sep-Oct and Mar-Apr. Caution: ANG ramp markings may not be appropriate for large acft, follow marshalls instructions. KC35 acft use caution, fire hydrants are 33" and are less than 84' from taxilane cntrln. Solar panel farm located 1.5 miles south of Rwy 33 thld. Al aft overflight of solar farm will be at or above 500' AGL. Parallel twy ops on Twy C and Twy B rstd to acft with wingspan of 171' or less. ASDE-X in use. Operate transponders with altitude reporting mode and ADS-B (if equipped) enabled on all airport surfaces. TPA-1873(1700) heavy acft. Rwy 06 VGS1 and glidepath not coincident. Rwy 24 VGS1 and glidepath not coincident. Rwy 33 VGS1 and glidepath not coincident. Cold temperature rstd arpt. Altitude correction required at or blo -23C. Afd mgr does not issue or store COMSEC for tran crews. Fixed wing acft use low idle for taxi, no engine checks or power runs allowed on the ARNG ramp due to possible FOD hazard. Ldg fee for business, corporate and revenue producing acft. Flight Notification Service (ADCUS) avbl. Acft req U.S. CSTMS svc must park on the CSTMS spot with the nose of the acft facing SW. Ctc CSTMS at 860-292-1314 when parked. Ops ctc autovon 636-8385, coml 860-627-3001. NOTE: See Special Notices-Land and Hold Short Lights.

**AIRPORT MANAGER:** 860-292-2003

**WEATHER DATA SOURCES:** ASOS (860) 386-3480 WSP

**COMMUNICATIONS:** D-ATIS 118.15 (860-386-3570) UNICOM 122.95

Ⓡ **BRADLEY APP/DEP CON** 123.95 (061°-240°) 125.35 (241°-060°) 127.225

**TOWER** 120.3 **GND CON** 121.9 **CLNC DEL** 121.75

**CPDLC** (LOGON KUSA)

**AIRSPACE:** CLASS C svc ctc **APP CON**

**VOR TEST FACILITY (VOT)** 111.4

**RADIO AIDS TO NAVIGATION:** NOTAM FILE HFD.

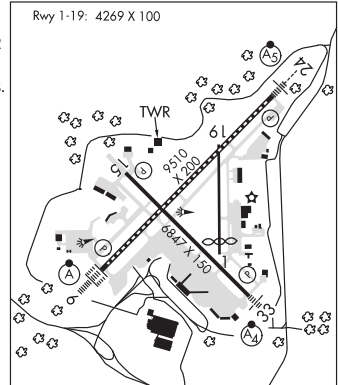
**HARTFORD (L) VOR/DME** 114.9 HFD Chan 96 N41°38.47' W72°32.85' 354° 18.9 NM to fld. 849/13W. HIWAS.

**ILS/DME** 111.1 I-BDL Chan 48 Rwy 06. Class IIIE.

**ILS/DME** 111.1 I-MYQ Chan 48 Rwy 24. Class IIE. DME unusable fm .4 NM inbound to Rwy 24.

**ILS/DME** 108.55 I-IXX Chan 22(Y) Rwy 33. Class IE.

**ASR**



**WINDSOR LOCKS** N41°56.37' W72°40.49'  
RCO (BRIDGEPORT RADIO)

**NEW YORK**  
L-33C, 34I