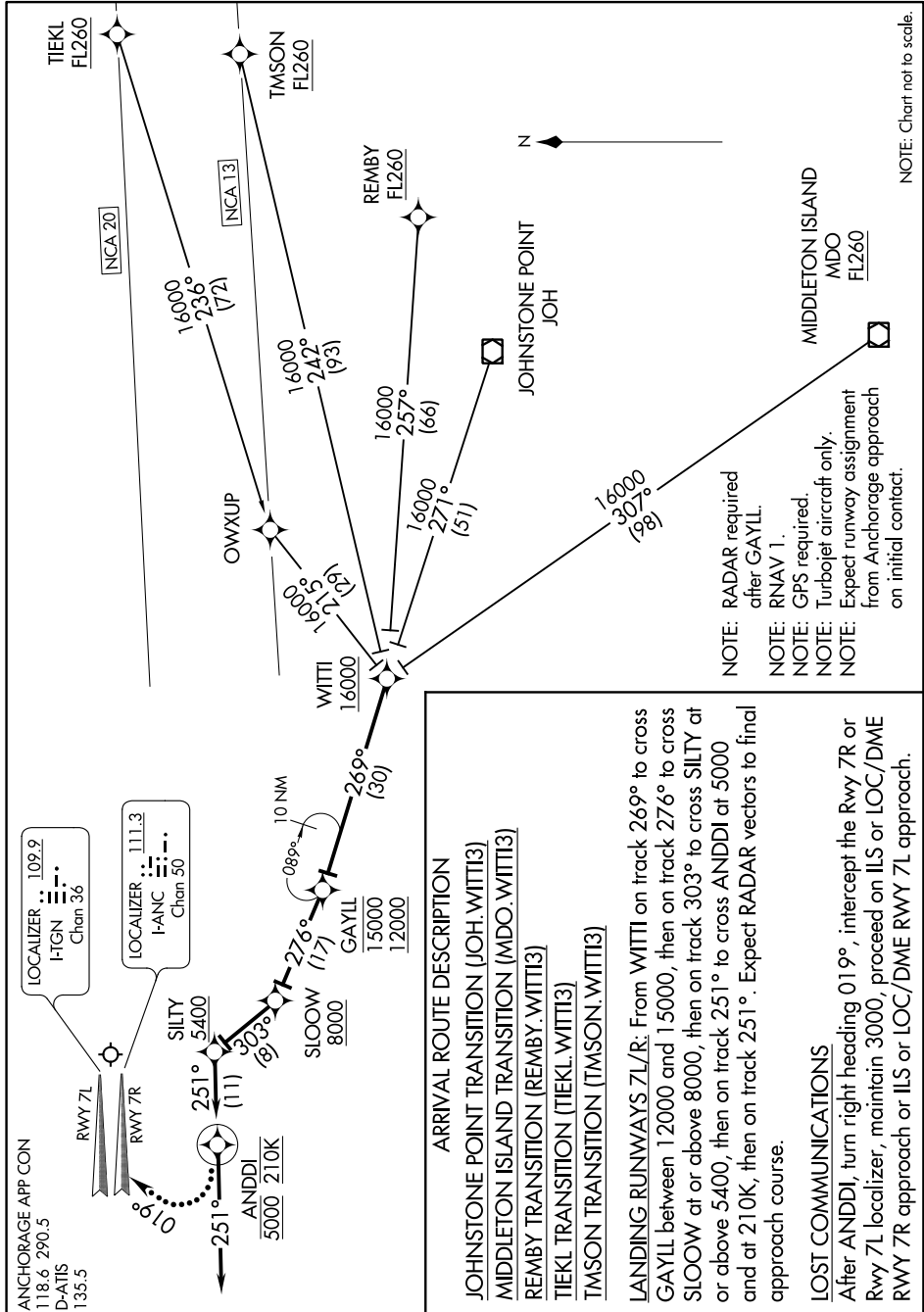


WITTI.WITTI3) 17173
WITTI THREE ARRIVAL (RNAV)

TED STEVENS ANCHORAGE INTL (ANC)(PANC)
 AL-1500 (FAA) ANCHORAGE, ALASKA

AK, 17 AUG 2017 to 12 OCT 2017



NOTE: Chart not to scale.

ARRIVAL ROUTE DESCRIPTION
JOHNSTONE POINT TRANSITION (JOH.WITTI3)
MIDDLETON ISLAND TRANSITION (MDO.WITTI3)
REMBY TRANSITION (REMBY.WITTI3)
TIEKL TRANSITION (TIEKL.WITTI3)
TMSON TRANSITION (TMSON.WITTI3)

LANDING RUNWAYS 7L/R: From WITTI on track 269° to cross GAYLL between 12000 and 15000, then on track 276° to cross SLOW at or above 8000, then on track 303° to cross SILTY at or above 5400, then on track 251° to cross ANDDI at 5000 and at 210K, then on track 251°. Expect RADAR vectors to final approach course.

LOST COMMUNICATIONS
 After ANDDI, turn right heading 019°, intercept the Rwy 7R or Rwy 7L localizer, maintain 3000, proceed on ILS or LOC/DME RWY 7R approach or ILS or LOC/DME RWY 7L approach.

NOTE: RADAR required after GAYLL.
 RNAV 1.
 NOTE: GPS required.
 NOTE: Turbojet aircraft only.
 NOTE: Expect runway assignment from Anchorage approach on initial contact.

WITTI THREE ARRIVAL (RNAV)
 (WITTI.WITTI3) 22JUN17

ANCHORAGE, ALASKA
 TED STEVENS ANCHORAGE INTL (ANC)(PANC)

AK, 17 AUG 2017 to 12 OCT 2017