

APP CRS	Rwy Idg	3934
237°	TDZE	365
	Apt Elev	365

RNAV (GPS) RWY 23

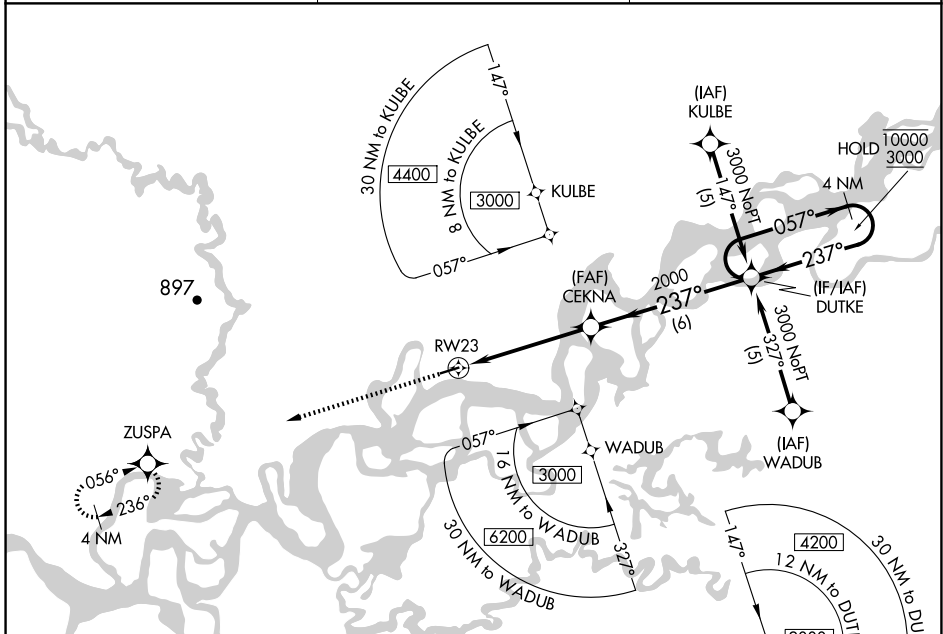
BEAVER (WBQ)(PAWB)

RNP APCH-GPS.

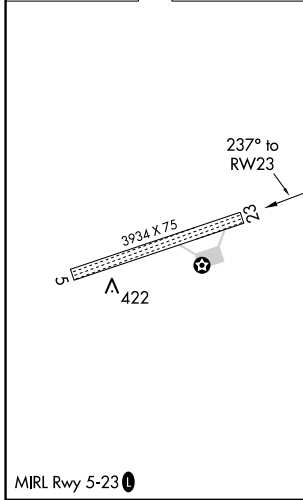
▼ Rwy 23 helicopter visibility reduction below 3/4 SM NA.
▲ NA Use Fort Yukon altimeter setting.

MISSED APPROACH: Climb to 3000 direct ZUSPA and hold.

FYU/PFYU AWOS-3P 125.8	FAIRBANKS RADIO 122.05 122.15	CTAF 122.9
----------------------------------	---	----------------------



ELEV 365	TDZE 365
----------	----------



				4 NM Holding Pattern
RWY 23		CEKNA	DUTKE	057° → 10000 ← 237° 3000
5 NM		6 NM		
CATEGORY	A	B	C	D
LNAV MDA	940-1	575 (600-1)	940-1½ 575 (600-1½)	NA
☑ CIRCLING	940-1	575 (600-1)	940-1½ 575 (600-1½)	NA

AK, 17 APR 2025 to 12 JUN 2025

AK, 17 APR 2025 to 12 JUN 2025