

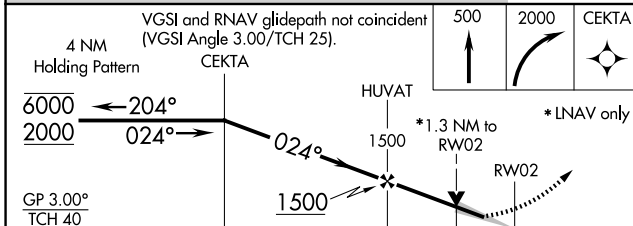
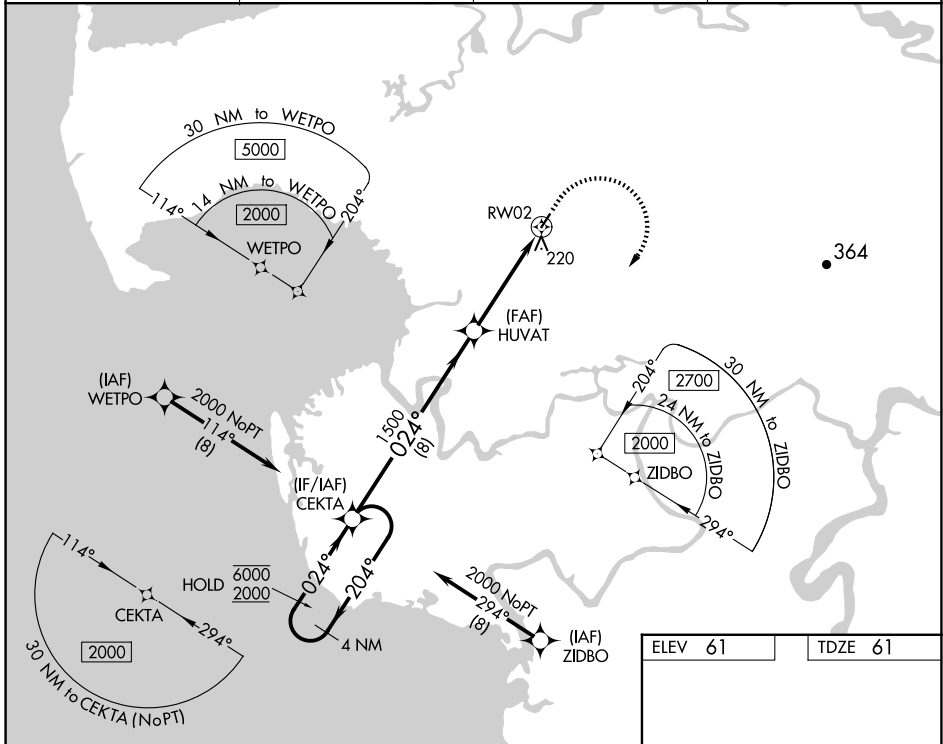
APP CRS	Rwy Idg	<b>3220</b>
<b>024°</b>	TDZE	<b>61</b>
	Apt Elev	<b>61</b>

# RNAV (GPS) RWY 2

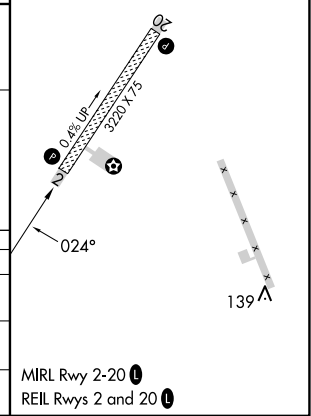
CHEVAK (VAK)(PAVA)

RNP APCH.	MISSED APPROACH: Climb to 500, then climbing right turn to 2000 direct CEKTA and hold.
For uncompensated Baro-VNAV systems, LNAV/VNAV NA below -22°C or above 54°C.	

AWOS-3P <b>120.625</b>	ANCHORAGE CENTER <b>124.5</b>	UNICOM <b>122.8</b>	CTAF <b>123.0</b>
---------------------------	----------------------------------	------------------------	----------------------



ELEV 61	TDZE 61
---------	---------



CATEGORY	A	B	C	D
LNAV/VNAV DA	381-1		320 (400-1)	
LNAV MDA	480-1	419 (500-1)	480-1 1/8	419 (500-1 1/8)
CIRCLING	520-1	459 (500-1)	520-1 1/2 459 (500-1 1/2)	700-2 639 (700-2)

AK, 17 APR 2025 to 12 JUN 2025

AK, 17 APR 2025 to 12 JUN 2025