

RNAV (GPS) RWY 31

WILLOW (UUO)(PAUO)

APP CRS 313°	Rwy ldg TDZE Apt Elev	4000 213 215
------------------------	-----------------------------	---

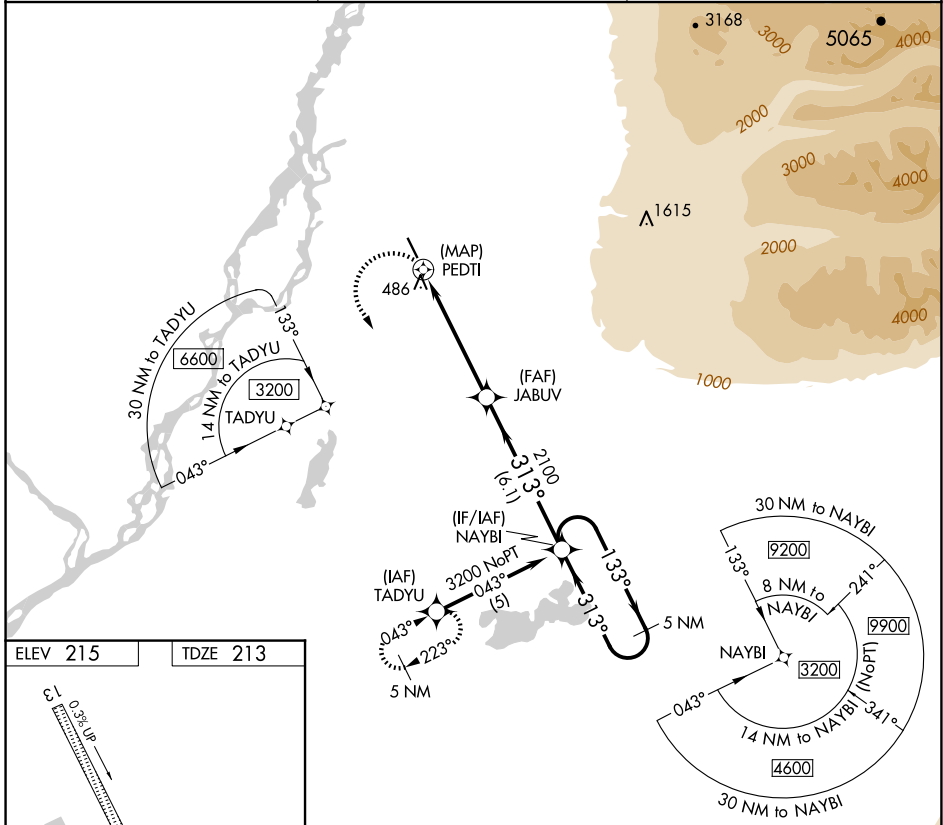
▼ Use Wasilla altimeter setting.
▲ NA Procedure NA at night.
 DME/DME RNP-0.3 NA.

MISSED APPROACH: Climbing left turn to 3200 direct TADYU and hold.

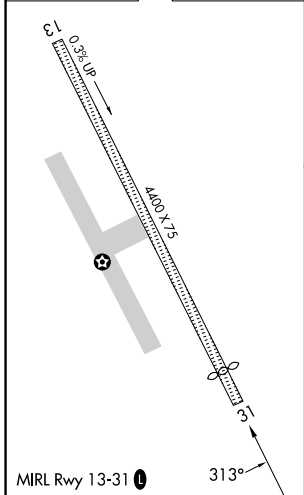
IYS/PAWS AWOS-3P
135.25

ANCHORAGE CENTER
133.7 279.6

CTAF
122.8



ELEV 215 TDZE 213



3200 TADYU	NAYBI 5 NM Holding Pattern			
JABUV	3200			
PEDTI	2100	313°	← 313°	
0.6 — 5.1 NM — 6.1 NM				
CATEGORY	A	B	C	D
LNAV MDA	1220-1¼ 1007 (1100-1¼)	1220-1½ 1007 (1100-1½)	1220-3 1007 (1100-3)	NA
C CIRCLING	1220-1¼ 1005 (1100-1¼)	1220-1½ 1005 (1100-1½)	1220-3 1005 (1100-3)	NA

AK, 17 APR 2025 to 12 JUN 2025

AK, 17 APR 2025 to 12 JUN 2025