

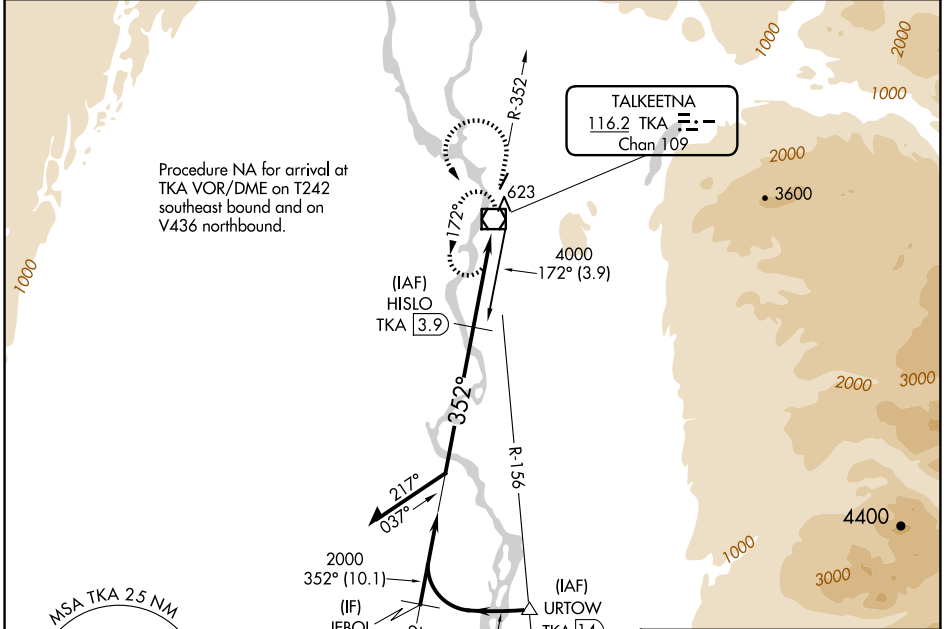
VOR/DME TKA 116.2 Chan 109	APP CRS 352°	Rwy ldg 3500 TDZE 363 Apt Elev 365
--	------------------------	---

VOR RWY 1

TALKEETNA (TKA)(PATK)

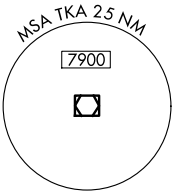
DME required.	MISSED APPROACH: Climb to 2100 on TKA VOR/DME R-352 then climbing left turn to 3200 direct TKA VOR/DME and hold.
<p>▼ Circling NA east of Rwy 1-19.</p> <p>⚠ Rwy 1 helicopter visibility reduction below 1 SM NA.</p> <p>⚡ -29°C Straight-in Rwy 1 NA at night, Circling Rwy 1 NA at night.</p>	

AFIS 135.2	ANCHORAGE CENTER 125.55 254.3	TALKEETNA RADIO 123.6 (CTAF) 0	UNICOM 123.0
----------------------	---	--	------------------------

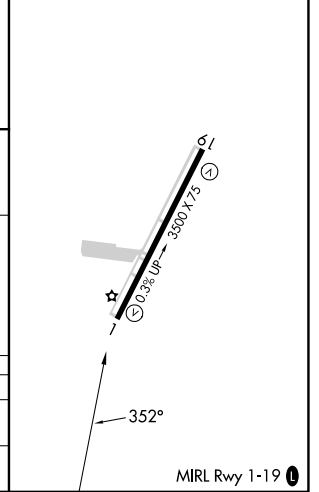
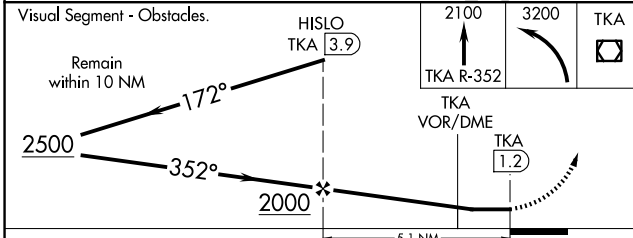


AK, 17 APR 2025 to 12 JUN 2025

AK, 17 APR 2025 to 12 JUN 2025



ELEV 365	TDZE 363
----------	----------



CATEGORY	A	B	C	D
S-1	1040-1	677 (700-1)	1040-1 $\frac{7}{8}$	677 (700-1 $\frac{7}{8}$)
CIRCLING	1040-1	675 (700-1)	1040-2 675 (700-2)	1200-2 $\frac{3}{4}$ 835 (900-2 $\frac{3}{4}$)