

APP CRS	Rwy Idg	3500
171°	TDZE	365
	Apt Elev	365

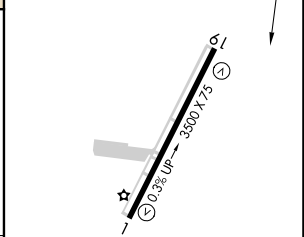
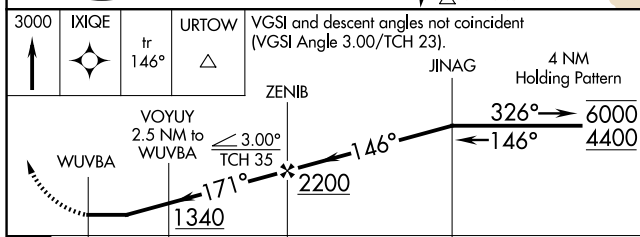
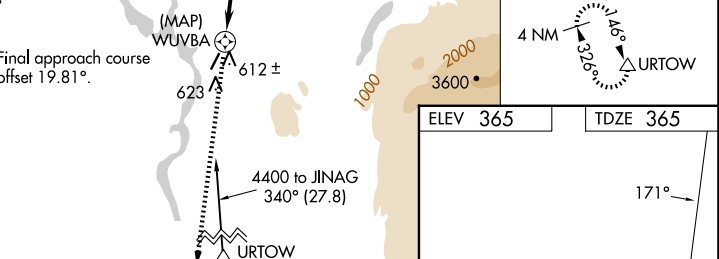
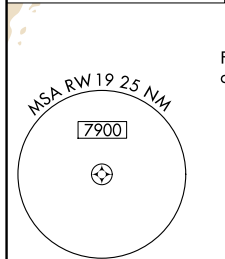
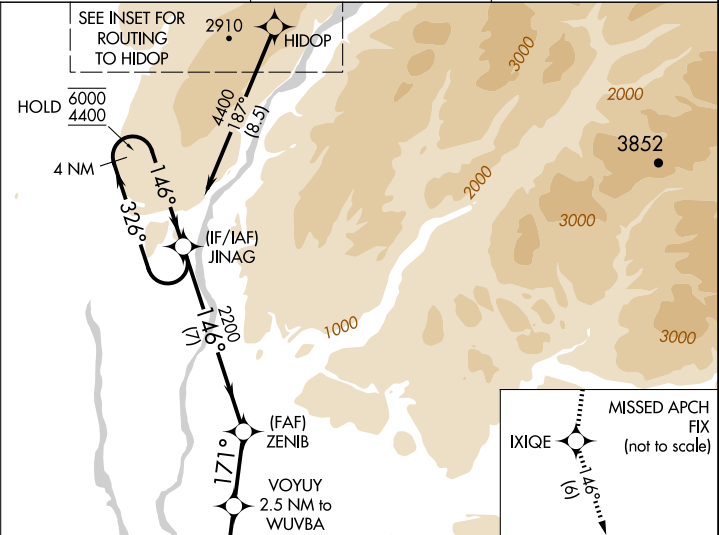
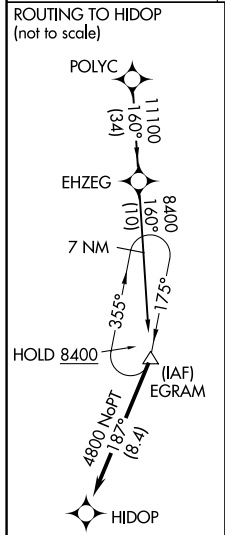
RNAV (GPS) RWY 19

TALKEETNA(TKA)(PATK)

RNP APCH.
 ⚠ Circling NA east of Rwy 1-19. Rwy 19 helicopter visibility reduction below 1 SM NA. Straight-in Rwy 19 NA at night, Circling Rwy 19 NA at night.

MISSED APPROACH: Climb to 3000 direct IXIQE and on track 146° to URTOW and hold.

AFIS 135.2	ANCHORAGE CENTER 125.55 254.3	TALKEETNA RADIO 123.6 (CTAF) 0	UNICOM 123.0
----------------------	---	--	------------------------



	0.5	2.5 NM	2.7 NM	7 NM
CATEGORY	A	B	C	D
LNAV MDA	880-1	515 (600-1)	880-1 $\frac{3}{8}$	515 (600-1 $\frac{3}{8}$)
CIRCLING	880-1	515 (600-1)	1040-2 675 (700-2)	1200-2 $\frac{3}{4}$ 835 (900-2 $\frac{3}{4}$)



AK, 17 APR 2025 to 12 JUN 2025

AK, 17 APR 2025 to 12 JUN 2025