

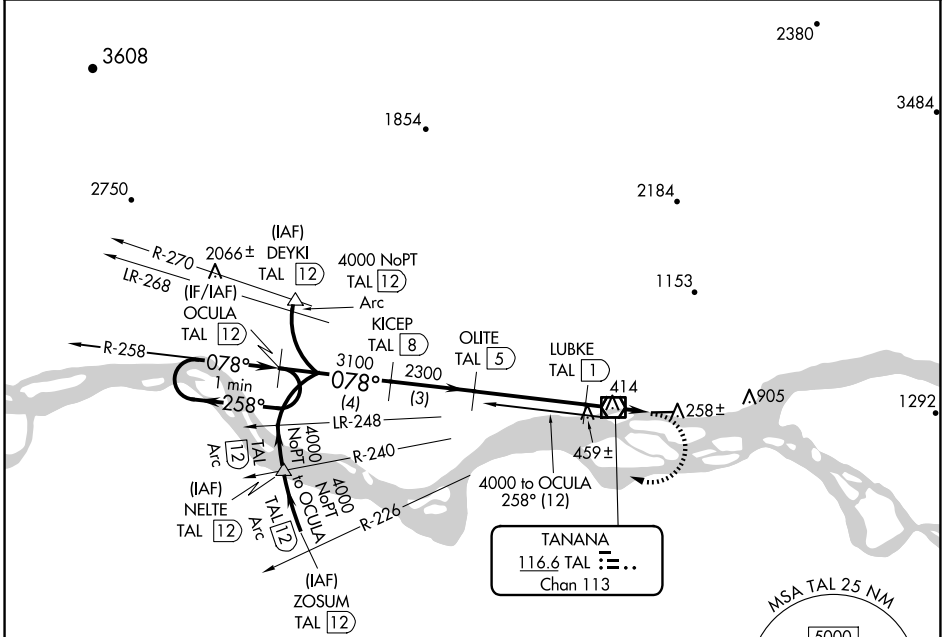
VOR/DME TAL <b>116.6</b> Chan <b>113</b>	APP CRS <b>078°</b>	Rwy Idg TDZE Apt Elev	<b>4400</b> <b>235</b> <b>242</b>
--	------------------------	-----------------------------	---

**VOR/DME RWY 7**  
RALPH M CALHOUN MEML (TAL) (PATA)

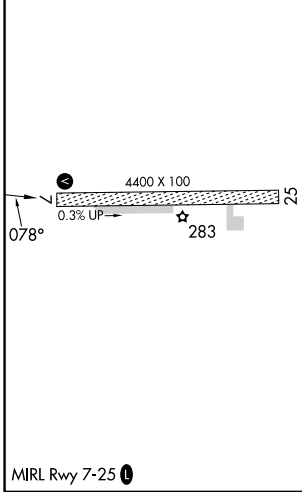
**⚠** Circling NA north of Rwy 7-25.  
Rwy 7 helicopter visibility reduction below 3/4 SM NA.

MISSED APPROACH: Climbing right turn to 4000 via heading 275° and TAL VOR/DME R-258 to OCULA 12 DME and hold, continue climb-in-hold to 4000.

ASOS <b>135.1</b>	ANCHORAGE CENTER <b>120.9 285.4</b>	FAIRBANKS RADIO <b>122.65</b>	CTAF <b>122.9</b>
----------------------	--	----------------------------------	----------------------



ELEV 242	TDZE 235
----------	----------



VGSI and descent angles not coincident (VGSI Angle 3.00/TCH 24).

4000	TAL R-258	OCULA TAL 12
------	-----------	--------------

One Minute Holding Pattern

CATEGORY	A	B	C	D
S-7	720-1	485 (500-1)	720-1 3/8	485 (500-1 3/8)
CIRCLING	740-1 498 (500-1)	760-1 518 (600-1)	1260-3	1018 (1100-3)

AK, 17 APR 2025 to 12 JUN 2025

AK, 17 APR 2025 to 12 JUN 2025