

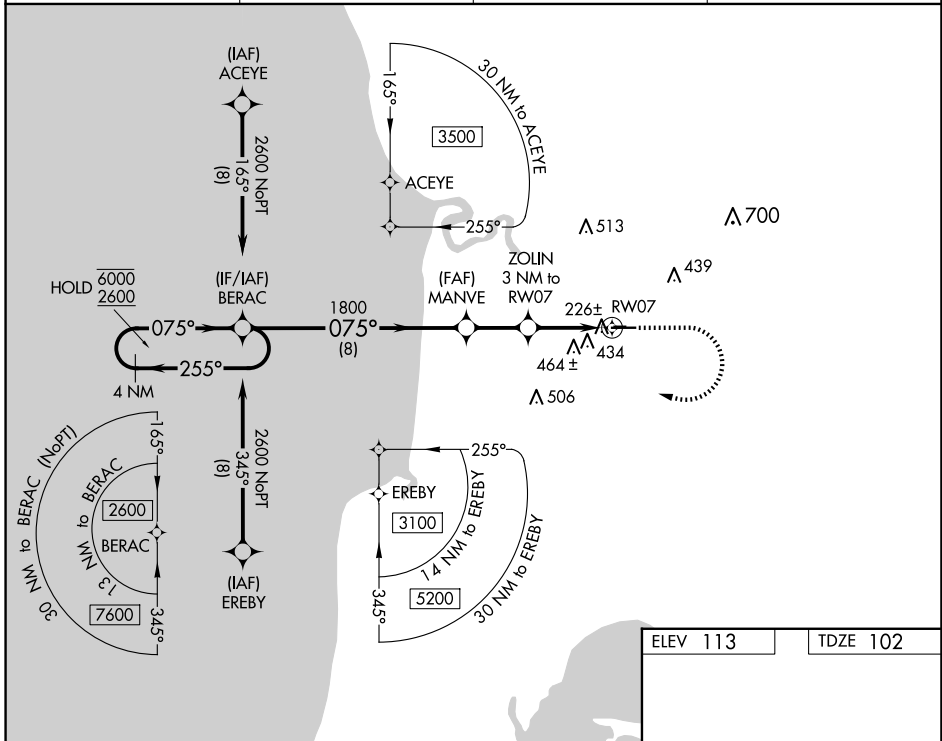
WAAS CH 45942 W07A	APP CRS 075°	Rwy Idg TDZE Apt Elev	5001 102 113
--	------------------------	-----------------------------	---

RNAV (GPS) RWY 7

SOLDOTNA (SXQ)(PASX)

RNP APCH - GPS.		MISSED APPROACH: Climb to 700 then climbing right turn to 2600 direct BERAC and hold.	
<p>⚠ Circling NA to Rwy's 7S and 25S. Rwy 7 helicopter visibility reduction below 1 SM NA. Rwy 7 Straight-In and Circling minimums NA at night.</p>			

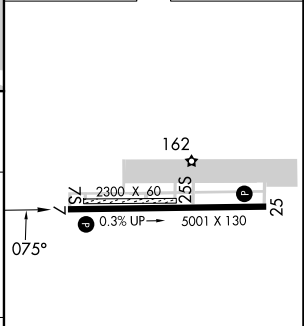
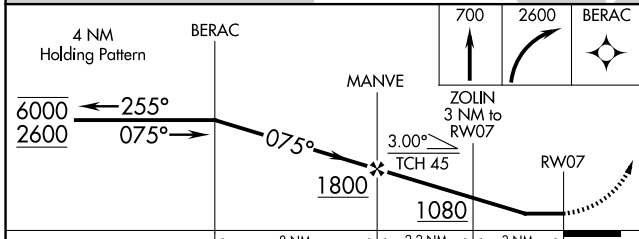
AWOS-3P 135.45	ANCHORAGE CENTER 125.7 379.1	KENAI RADIO 122.35	CTAF 122.5 0
--------------------------	--	------------------------------	------------------------



AK, 17 APR 2025 to 12 JUN 2025

AK, 17 APR 2025 to 12 JUN 2025

ELEV 113	TDZE 102
----------	----------



CATEGORY	A	B	C	D
LP MDA	480-1 378 (400-1)			
LNAV MDA	640-1	538 (600-1)	640-1½	538 (600-1½)
CIRCLING	740-1 627 (700-1)	820-1 707 (800-1)	820-2 707 (800-2)	980-2¾ 867 (900-2¾)

MRL Rwy 7-25 0