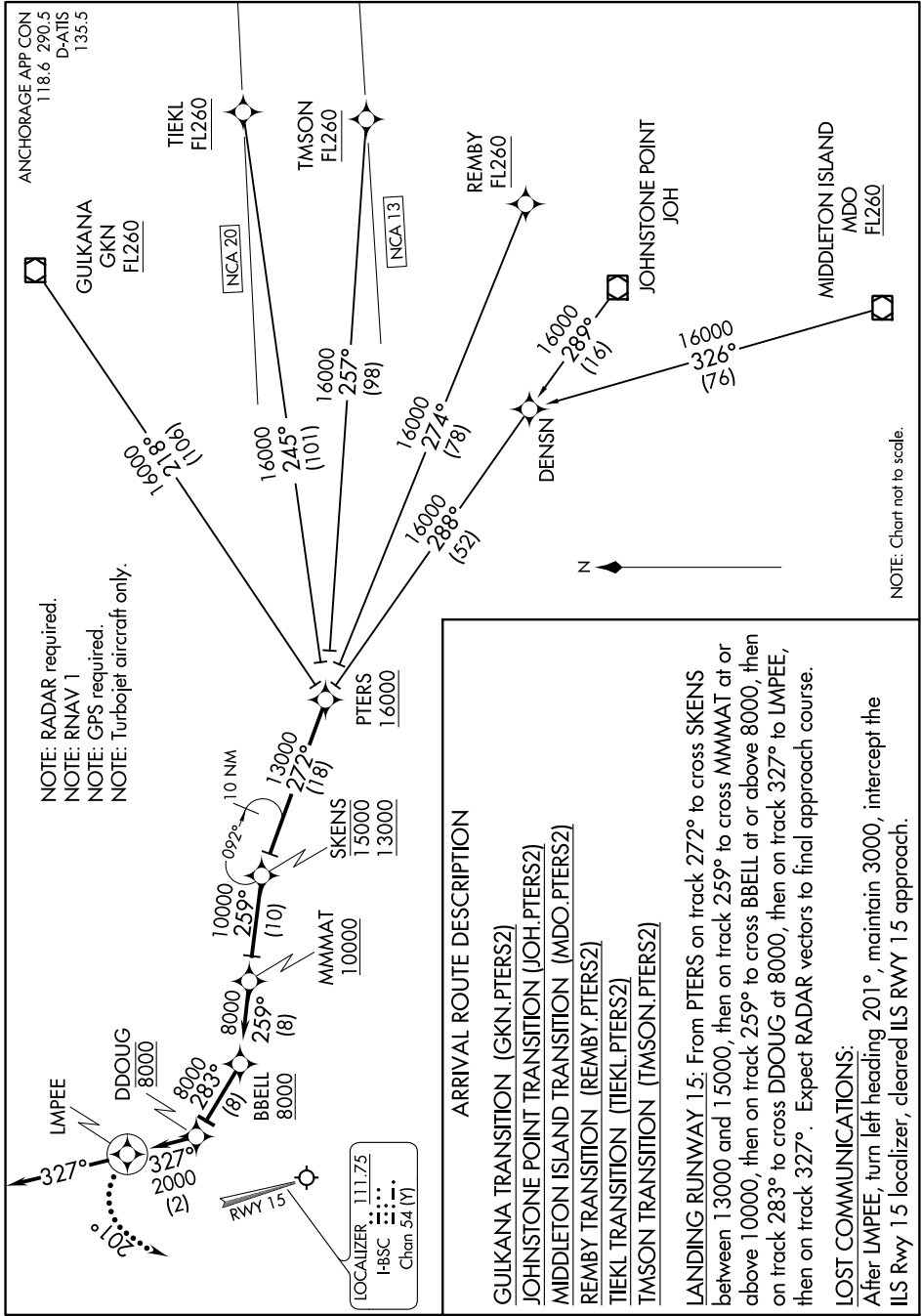


AK, 17 AUG 2017 to 12 OCT 2017



ARRIVAL ROUTE DESCRIPTION

GULKANA TRANSITION [GKN.PTERS2]
JOHNSTONE POINT TRANSITION [JOH.PTERS2]
MIDDLETON ISLAND TRANSITION [MDO.PTERS2]
REMBY TRANSITION [REMBY.PTERS2]
TIEKL TRANSITION [TIEKL.PTERS2]
TMSON TRANSITION [TMSON.PTERS2]

LANDING RUNWAY 15: From PTERS on track 272° to cross SKENS between 13000 and 15000, then on track 259° to cross MPMAT at or above 10000, then on track 283° to cross BBELL at or above 8000, then on track 283° to cross DDOUG at 8000, then on track 327° to LMPEE, then on track 327°. Expect RADAR vectors to final approach course.

LOST COMMUNICATIONS:
 After LMPEE, turn left heading 201°, maintain 3000, intercept the ILS Rwy 15 localizer, cleared ILS RWY 15 approach.

AK, 17 AUG 2017 to 12 OCT 2017