

LOC/DME I-OTZ 110.7 Chan 44	APP CRS 089°	Rwy Idg TDZE Apt Elev	5900 13 15
---	------------------------	-----------------------------	---------------------------------------

ILS or LOC RWY 9
RALPH WIEN MEML (OTZ) (PAOT)

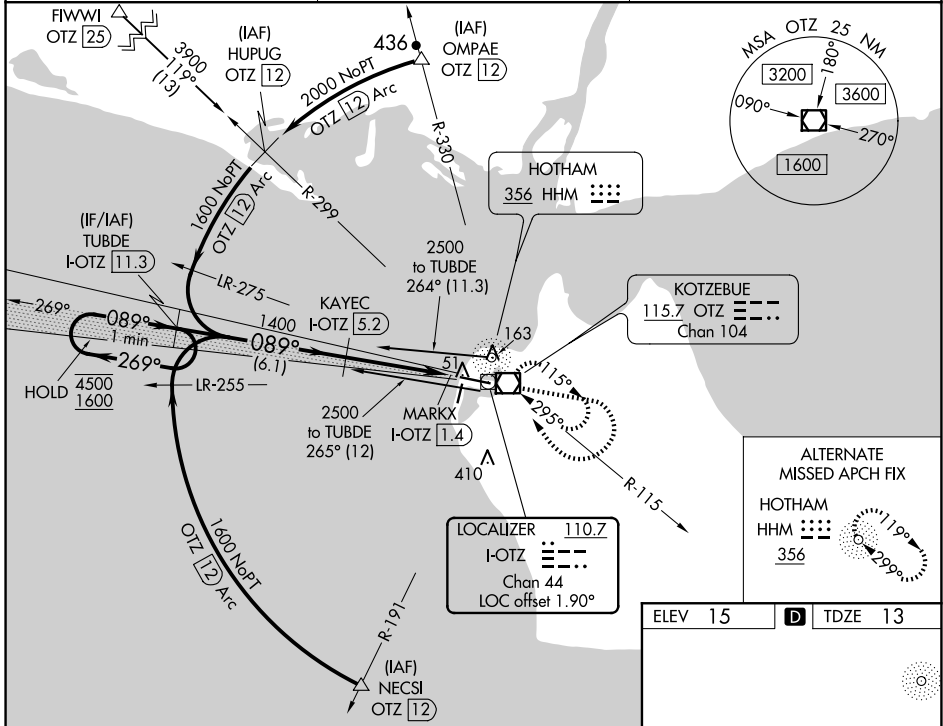
DME required.
∇ Circling Rwy 18, 36 NA at night, Circling Rwy 27 at night,
⚠ operational VGSI required, remain on or above VGSI glidepath
 until threshold. Rwy 9 helicopter visibility reduction below
 RVR 4000 NA.

MISSED APPROACH: Climb to 1700
 then climbing right turn to 2000 direct
 OTZ VOR/DME and hold, continue
 climb-in-hold to 2000.

AFIS
135.45

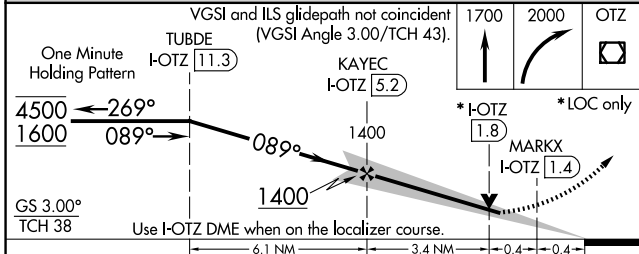
ANCHORAGE CENTER
119.2 263.0

KOTZEBUE RADIO
123.6 (CTAF) 0



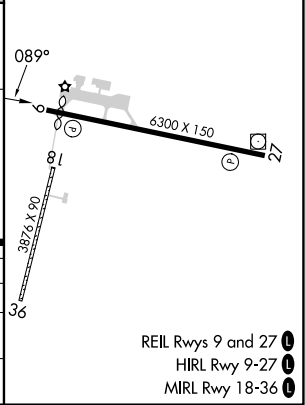
AK, 17 APR 2025 to 12 JUN 2025

AK, 17 APR 2025 to 12 JUN 2025



ELEV 15	D TDZE 13
---------	------------------

CATEGORY	A	B	C	D
S-ILS 9	263/50		250 (300-1)	
S-LOC 9	320/55	307 (400-1)	320/50	307 (400-1)
C CIRCLING	520-1	505 (600-1)	720-2 705 (800-2)	720-2¼ 705 (800-2¼)



REIL Rwy 9 and 27 **0**
 HIRL Rwy 9-27 **0**
 MIRL Rwy 18-36 **0**