

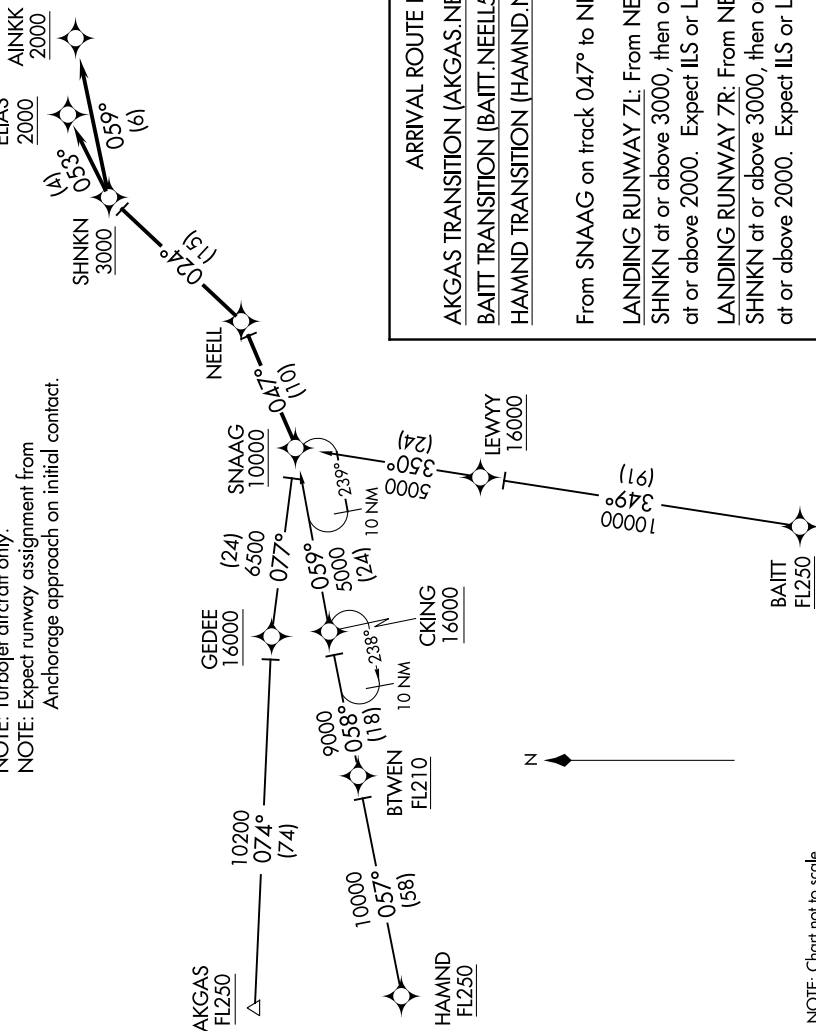
(SNAAG.NEELL5) 17173  
**NEELL FIVE ARRIVAL (RNAV)**

TED STEVENS ANCHORAGE INTL (ANC)(PANC)  
 AL-1500 (FAA) ANCHORAGE, ALASKA

AK, 17 AUG 2017 to 12 OCT 2017

ANCHORAGE APP CON  
 126.4 257.9  
 D-ATIS  
 135.5

NOTE: RNAV 1.  
 NOTE: GPS required.  
 NOTE: Turbojet aircraft only.  
 NOTE: Expect runway assignment from Anchorage approach on initial contact.



**ARRIVAL ROUTE DESCRIPTION**  
 AKGAS TRANSITION (AKGAS.NEELL5)  
 BAITT TRANSITION (BAITT.NEELL5)  
 HAMND TRANSITION (HAMND.NEELL5)

From SNAAG on track 047° to NEELL.  
**LANDING RUNWAY 7L:** From NEELL on track 024° to cross SHNKN at or above 3000, then on track 059° to cross AINKK at or above 2000. Expect ILS or LOC/DME RWY 7L approach.  
**LANDING RUNWAY 7R:** From NEELL on track 024° to cross SHNKN at or above 3000, then on track 053° to cross ELIAS at or above 2000. Expect ILS or LOC/DME RWY 7R approach.

NOTE: Chart not to scale.

AK, 17 AUG 2017 to 12 OCT 2017

(SNAAG.NEELL5) 22JUN17  
**NEELL FIVE ARRIVAL (RNAV)**

ANCHORAGE, ALASKA  
 TED STEVENS ANCHORAGE INTL (ANC)(PANC)