

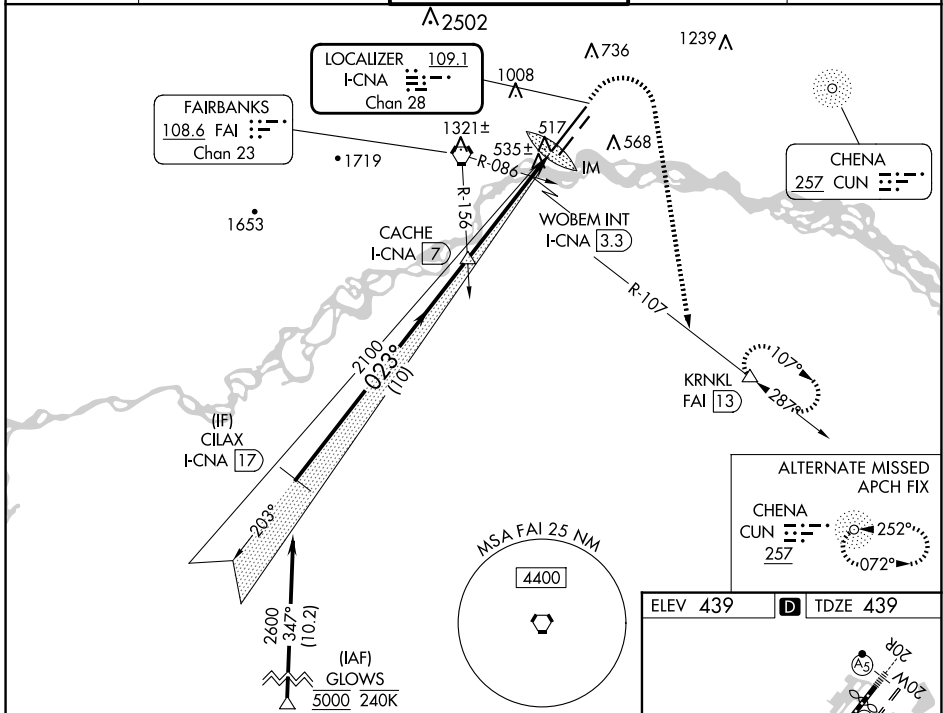
LOC/DME I-CNA	APP CRS	Rwy Idg	<b>11050</b>
<b>109.1</b>	<b>023°</b>	TDZE	<b>439</b>
Chan 28		Apt Elev	<b>439</b>

# ILS or LOC RWY 2L

FAIRBANKS INTL (FAI) (PAFA)

RNP APCH - GPS. DME required.	ALSIF-2 	MISSED APPROACH: Climb to 900 then climbing right turn to 5000 on heading 170° and FAI VORTAC R-107 to KRNL/FAI 13 DME and hold, continue climb-in-hold to 5000.
Circling NA west of Rwy 2L-20R. Circling NA to Rwsy 2W and 20W. For inop ALS, increase S-ILS 2L Cat E visibility to RVR 4000 and S-LOC 2L Cat C/D/E visibility to RVR 5500.		

ATIS <b>124.4</b>	FAIRBANKS APP CON <b>125.35 363.2</b>	FAIRBANKS TOWER <b>118.3 257.8</b>	GND CON <b>121.9</b>	CINC DEL <b>127.6</b>
----------------------	--	---------------------------------------	-------------------------	--------------------------

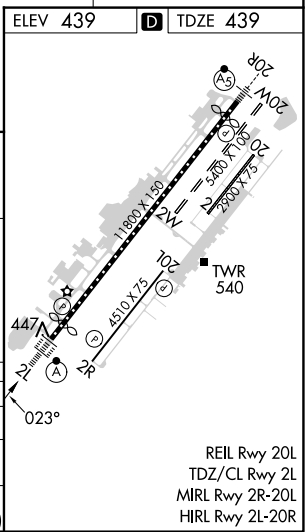


VGSI and ILS glidepath not coincident (VGSI Angle 3.00/TCH 73).

CILAX I-CNA 17	CACHE I-CNA 7	WOBEM INT I-CNA 3.3	I-CNA 2
2600	2100	900	IM
GS 3.00° TCH 56	10 NM	3.7 NM	1.1 NM
023°			

900	5000	FAI R-107	KRNL
↑	hdg 170°		△

CATEGORY	A	B	C	D	E
S-ILS 2L	639/18 200 (200-½)				
S-LOC 2L	800/24	361 (400-½)	800/35 361 (400-¾)		
CIRCLING	880-1 441 (500-1)	900-1 461 (500-1)	900-1½ 461 (500-1½)	1020-2 581 (600-2)	1060-2½ 621 (700-2½)



AK, 17 APR 2025 to 12 JUN 2025

AK, 17 APR 2025 to 12 JUN 2025