

| | |
|------------------------|------------------------|
| APP CRS 038° | Rwy Idg 4600 |
| | TDZE 368 |
| | Apt Elev 368 |

RNAV (GPS) RWY 4L

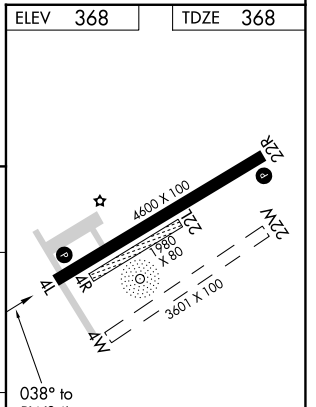
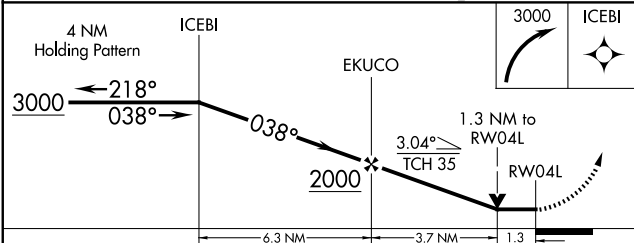
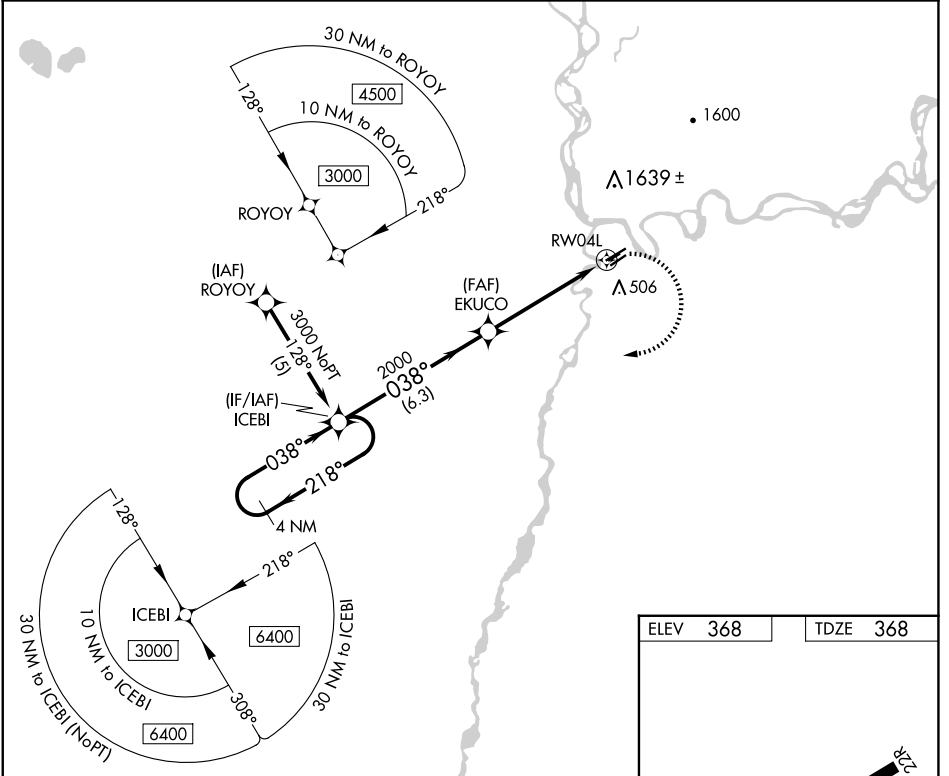
NENANA MUNI (ENN)(PANN)

RNP APCH.

⚠ When local altimeter setting not received, use Fairbanks Intl altimeter setting and increase all MDAs 100 feet and LNAV Cat C and Circling Cts C/D visibility ¼ SM. Circling NA west of Rwy 4L-22R. Procedure NA at night. Circling NA to Rws 4R, 22L, 4W and 22W. Rwy 4L helicopter visibility reduction below 1 SM NA.

MISSED APPROACH: Climbing right turn to 3000 direct ICEBI and hold.

| | | | |
|----------------------|--|---------------------------------|----------------------|
| ASOS 125.2 | FAIRBANKS APP CON 125.35 363.2 | FAIRBANKS RADIO 122.5 | CTAF 122.1 |
|----------------------|--|---------------------------------|----------------------|



| CATEGORY | A | B | C | D |
|----------|-------|-------------|-------------------------|-------------------------|
| LNAV MDA | 800-1 | 432 (500-1) | 800-1¼ 432 (500-1¼) | 800-1½ 432 (500-1½) |
| CIRCLING | 860-1 | 492 (500-1) | 1180-2½ 812 (900-2½) | 1180-2¾ 812 (900-2¾) |

MIRL Rws 4L-22R and 4R-22L
REIL Rws 4L and 22R

AK, 17 APR 2025 to 12 JUN 2025

AK, 17 APR 2025 to 12 JUN 2025