

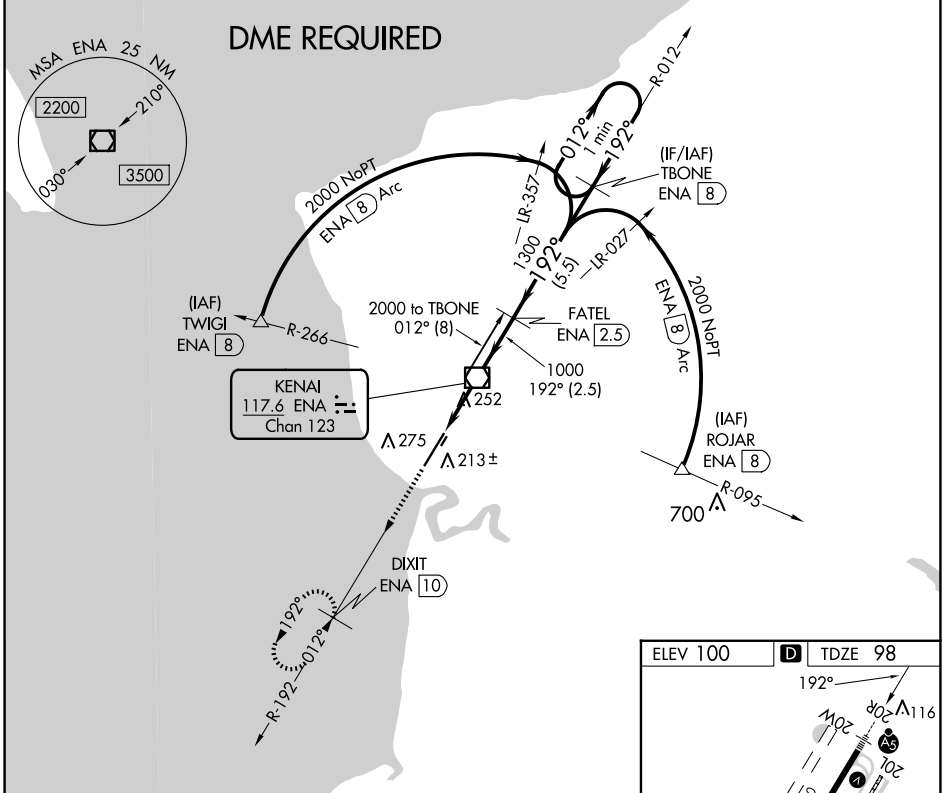
| | | |
|--|------------------------|--|
| VOR/DME ENA 117.6 Chan 123 | APP CRS 192° | Rwy Idg 7575 TDZE 98 Apt Elev 100 |
|--|------------------------|--|

VOR RWY 20R

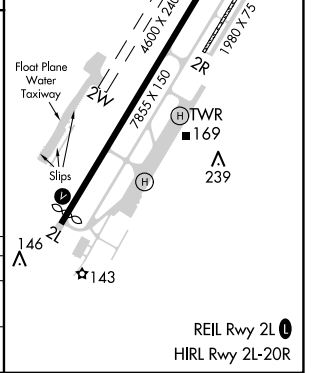
KENAI MUNI (ENA) (PAEN)

| | | | | |
|---|---------------|--|-------------------------------|--|
| <p>Circling Rwy 2R, 20L NA at night. DME required. VDP NA when using Soldotna altimeter setting. When local altimeter setting not received, use Soldotna altimeter setting and increase all MDA 40 feet, increase S-20R Cats C and D visibility to RVR 5000. Circling Rwy 2W, 20W NA.</p> | <p>MALS R</p> | <p>MISSED APPROACH: Climb to 2200 on ENA VOR/DME R-192 to DIXIT/ENA VOR/DME 10 DME and hold.</p> | | |
| | | | <p>ATIS 133.35</p> | <p>ANCHORAGE CENTER 125.7 379.1</p> |

| | | | | |
|-----------------------|--|---|--------------------------|------------------------------|
| ATIS 133.35 | ANCHORAGE CENTER 125.7 379.1 | KENAI TOWER* 121.3 (CTAF) 239.3 | GND CON 118.75 | KENAI RADIO 122.65 |
|-----------------------|--|---|--------------------------|------------------------------|



| | | | | | |
|------------------------|----------------------|--|-----------------------|----------------------|----------------------------|
| 2200 ↑ ENA R-192 | DIXIT ENA 10 | VGSI and descent angles not coincident (VGSI Angle 3.00/TCH 51). | | TBONE ENA 8 | One Minute Holding Pattern |
| ENA 2.3 | ENA 1.2 | ENA VOR/DME 3.44° TCH 51 | FATEL ENA 2.5 | 1000 | 192° |
| 1.2 | 1.2 | 2.5 NM | 5.5 NM | 1300 | 012° → 2000 |
| CATEGORY | A | B | C | D | |
| S-20R | 520/24 | 422 (500-½) | 520/40 | 422 (500-¾) | |
| CIRCLING | 560-1 460 (500-1) | 580-1 480 (500-1) | 580-1½ 480 (500-½) | 680-2 580 (600-2) | |



AK, 17 APR 2025 to 12 JUN 2025

AK, 17 APR 2025 to 12 JUN 2025