

APP CRS	Rwy Idg	<b>2660</b>
<b>296°</b>	TDZE	<b>30</b>
	Apt Elev	<b>30</b>

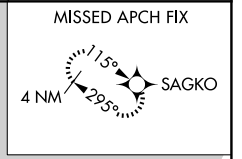
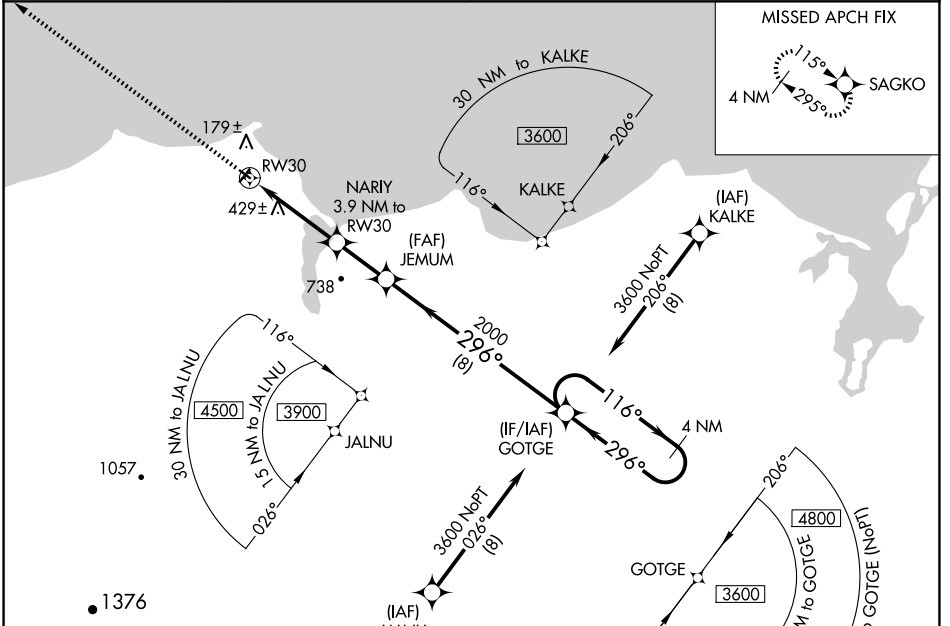
# RNAV (GPS) RWY 30

DEERING (DEE)(PADE)

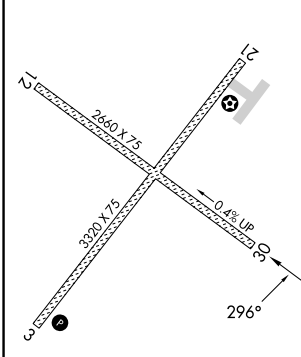
**⚠** DME/DME RNP-0.3 NA.  
 Rwy 30 helicopter visibility reduction below 1 SM NA.  
**⚠** -39°C Straight-in Rwy 12 NA at night, Circling Rwy 12, 30 NA at night.

MISSED APPROACH: Climb to 3000 direct SAGKO and hold.

ASOS <b>135.5</b>	ANCHORAGE CENTER <b>119.2 263.0</b>	KOTZEBUE RADIO <b>122.25</b>	CTAF <b>122.9</b>
----------------------	--	---------------------------------	----------------------



ELEV 30	TDZE 30
---------	---------



REIL Rwy 3 **⓪**  
 MIRL Rwy 3-21 and 12-30 **⓪**

	Visual Segment - Obstacles.			
	JEMUM NARIY 3.9 NM to RWY 30		GOTGE 4 NM Holding Pattern	
RWY 30		3600		
1300		2000		
3.9 NM		2.2 NM		
296°		116°		
296°		296°		
CATEGORY	A	B	C	D
LNAV MDA	740-1	710 (800-1)	740-2 710 (800-2)	NA
<b>⓪</b> CIRCLING	740-1 710 (800-1)	840-1 810 (900-1)	840-2 1/4 810 (900-2 1/4)	NA

AK, 17 APR 2025 to 12 JUN 2025

AK, 17 APR 2025 to 12 JUN 2025