

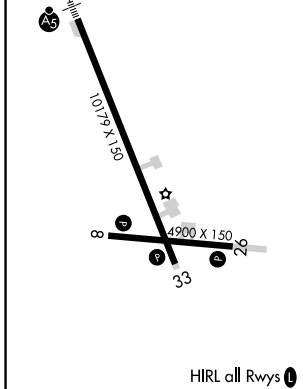
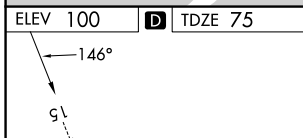
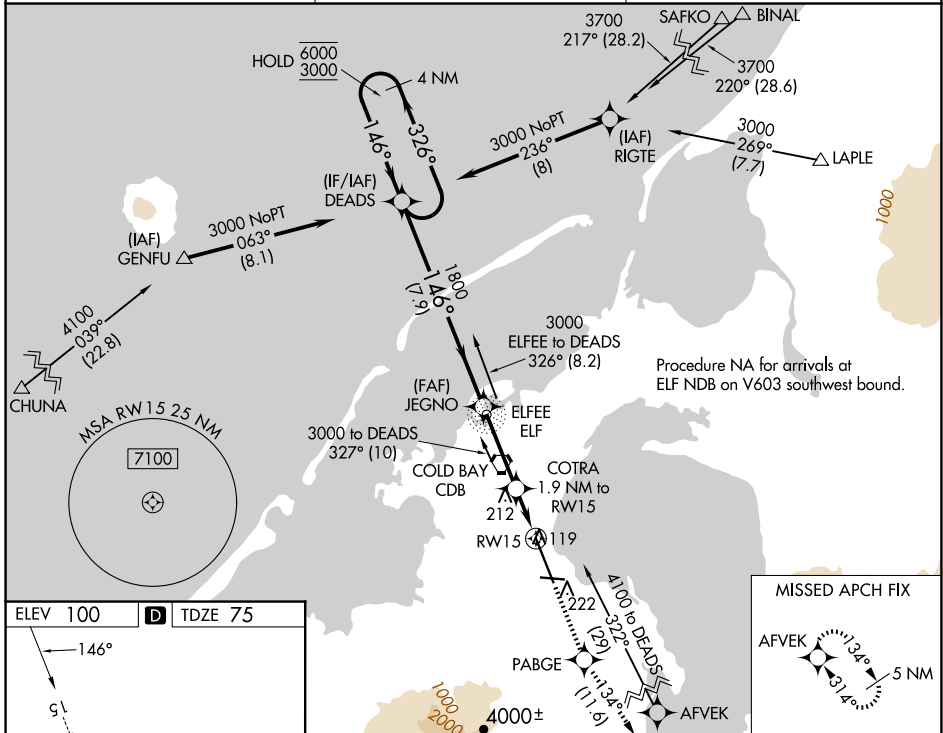
WAAS CH <b>45612</b> <b>W15A</b>	APP CRS <b>146°</b>	Rwy Idg <b>10179</b> TDZE <b>75</b> Apt Elev <b>100</b>
--	------------------------	---

# RNAV (GPS) RWY 15

COLD BAY (CDB) (PACD)

RNP APCH.	MALSR	MISSED APPROACH: Climb to 4100 direct PABGE and on track 134° to AFVEK and hold, continue climb-in-hold to 4100.
<p>▼ For uncompensated Baro-VNAV systems, LNAV/VNAV NA below -10°C or above 54°C. Circling NA for Cat A southwest of Rwy 15-33 at night. Circling NA for Cats B/C/D southwest of Rwy 15-33. For inop ALS, increase LNAV/VNAV all Cats visibility to RVR 4000 and LNAV Cat C/D visibility to RVR 6000. #RVR 1800 authorized with use of FD or AP or HUD to DA.</p>		

ASOS <b>135.75</b>	ANCHORAGE CENTER <b>118.5 278.3</b>	COLD BAY RADIO <b>123.6 (CTAF) 0</b>
-----------------------	--	---



DEADS		4100	PABGE	tr 134°	AFVEK
4 NM Holding Pattern		↑	⊛	↗	⊛
6000	← 326°	1800	COTRA 1.9 NM to *1.1 NM RWY15 to RWY15		
3000	→ 146°	*760	*LNAV only		
GP 3.10° TCH 55		7.9 NM	3.2 NM	0.8 NM	1.1 NM
CATEGORY	A	B	C	D	
LPV DA#	275/24		200 (200-½)		
LNAV/VNAV DA	325/24		250 (300-½)		
LNAV MDA	480/24		480/40		405 (400-¾)
	540-1	560-1	560-1½		860-2½
	440 (500-1)	460 (500-1)	460 (500-1½)		760 (800-2½)

AK, 17 APR 2025 to 12 JUN 2025

AK, 17 APR 2025 to 12 JUN 2025