

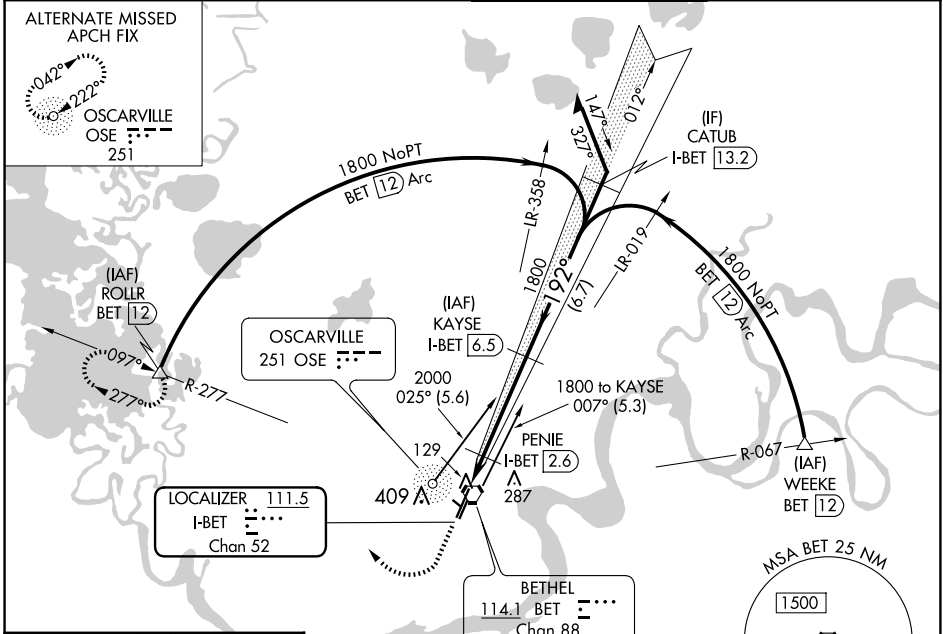
LOC/DME I-BET	APP CRS	Rwy Idg	<b>6400</b>
<b>111.5</b>	<b>192°</b>	TDZE	<b>120</b>
Chan <b>52</b>		Apt Elev	<b>129</b>

# ILS Z or LOC Z RWY 19R

BETHEL (BET)(PABE)

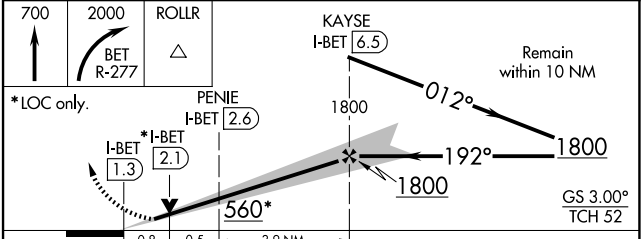
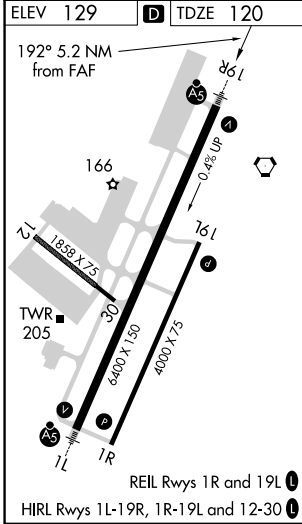
DME required.		MALSR	MISSED APPROACH: Climb to 700 then climbing right turn to 2000 on BET VORTAC R-277 to ROLLR/BET VORTAC 12 DME and hold.
⚠ Circling NA west of Rwy 1L-19R. ⚠ For inop ALS, increase S-LOC Cat C/D visibility to RVR 4500. #RVR 1800 authorized with the use of FD or AP or HUD to DA.			

ATIS <b>119.8</b>	ANCHORAGE CENTER <b>125.2 372.0</b>	BETHEL TOWER * <b>118.7</b> (CTAF)	GND CON <b>121.7</b>
----------------------	--	---------------------------------------	-------------------------



AK, 17 APR 2025 to 12 JUN 2025

AK, 17 APR 2025 to 12 JUN 2025



CATEGORY	A	B	C	D
S-ILS 19R#	320/24 200 (200-½)			
S-LOC 19R	400/24 280 (300-½)			
CIRCLING	500-1 371 (400-1)	600-1 471 (500-1)	600-1½ 471 (500-1½)	680-2 551 (600-2)