

# RNAV (GPS) RWY 17

ANVIK (ANV)(PANV)

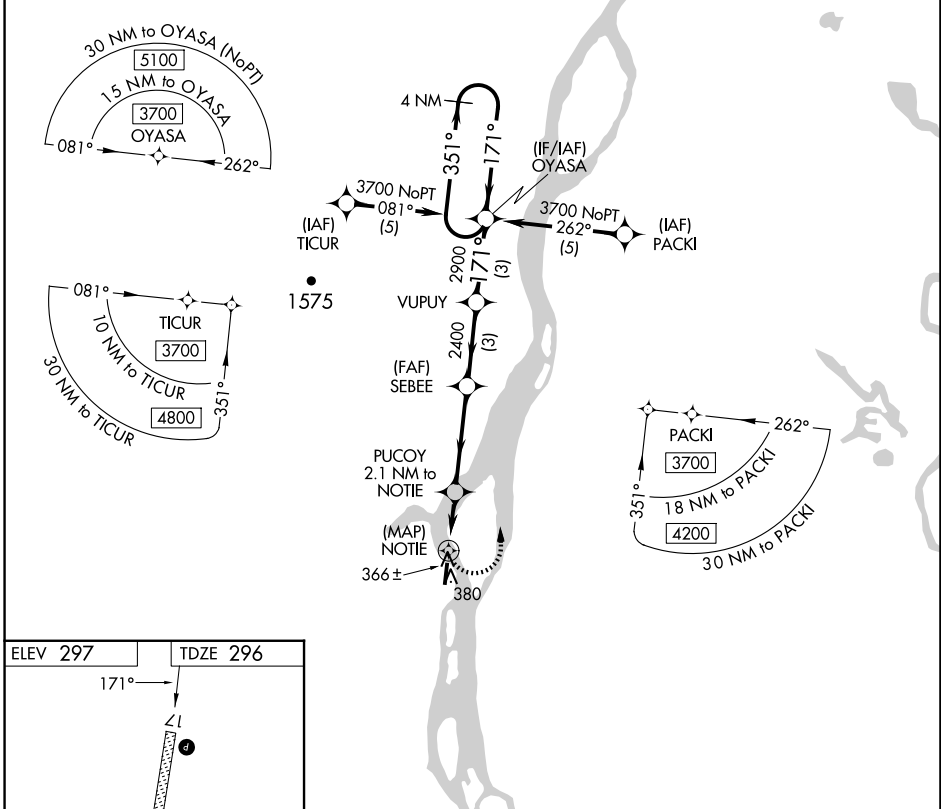
APP CRS	Rwy Idg	<b>4000</b>
<b>171°</b>	TDZE	<b>296</b>
	Apt Elev	<b>297</b>

RNP APCH - GPS.

**⚠** Rwy 17 helicopter visibility reduction below ¾ SM NA.

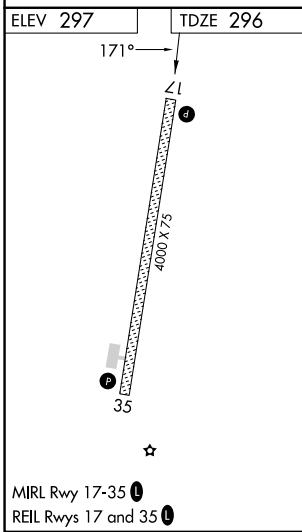
MISSED APPROACH: Climbing left turn to 3700 direct OYASA and hold, continue climb-in-hold to 3700.

AWOS-3P <b>133.55</b>	ANCHORAGE CENTER <b>135.7 335.5</b>	KENAI RADIO <b>122.4</b>	UNICOM <b>122.7 (CTAF) 0</b>
--------------------------	--	-----------------------------	---------------------------------



AK, 17 APR 2025 to 12 JUN 2025

AK, 17 APR 2025 to 12 JUN 2025



3700 OYASA	VGSi and descent angles not coincident (VGSi Angle 3.00/TCH 25).			
3700 OYASA	4 NM Holding Pattern			
PUCOY 2.1 NM to NOTIE	SEBEE	VUPLY	OYASA	4 NM Holding Pattern
NOTIE	2400	2900	3700	
	1140			
	0.5	2.1 NM	3.8 NM	3 NM
CATEGORY	A	B	C	D
LNAV MDA	700-1 404 (500-1)		700-1½ 404 (500-1½)	
CIRCLING	840-1 543 (600-1)		840-1½ 543 (600-1½)	860-2 563 (600-2)