

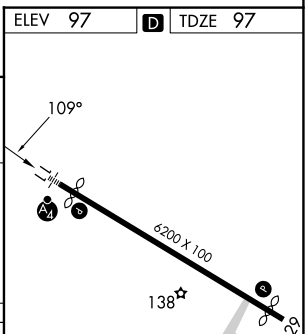
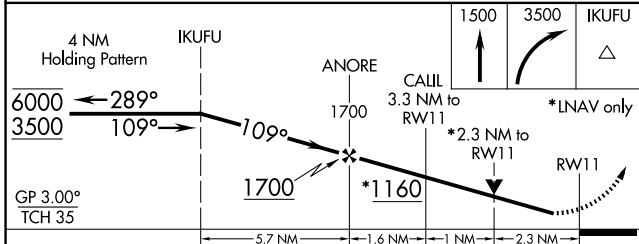
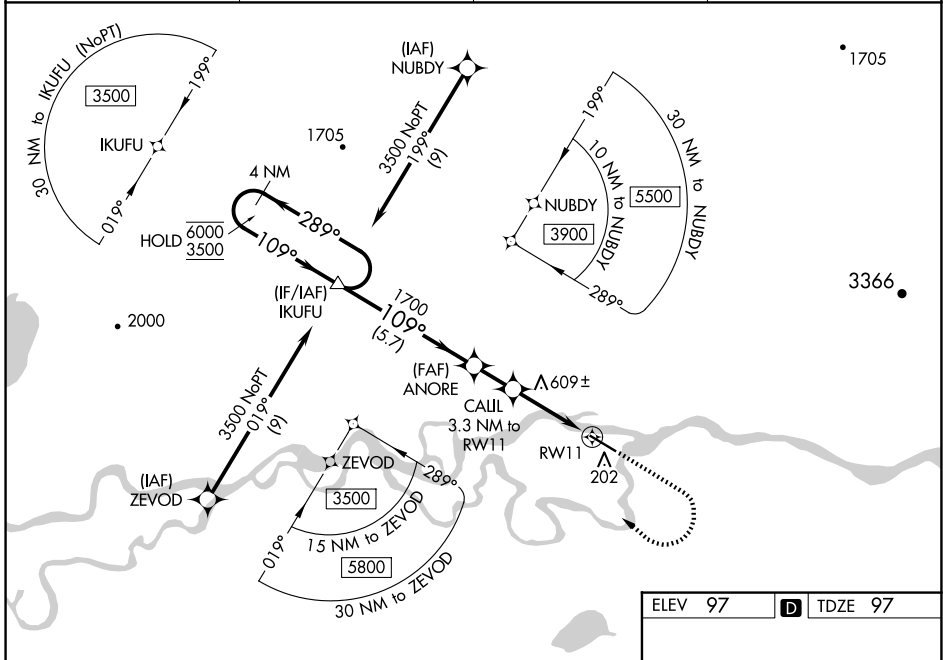
WAAS CH 45838 W11A	APP CRS 109°	Rwy Idg TDZE 97 Apt Elev 97	5400
---------------------------------	------------------------	---	-------------

RNAV (GPS) RWY 11

ANIAK (ANI)(PANI)

RNP APCH.	<p>⚠ Circling NA north of Rwy 11-29. Rwy 11 helicopter visibility reduction below ¾ SM NA. Inop table does not apply to LPV, LNAV/VNAV all Cats, LNAV Cat A. For uncompensated Baro-VNAV systems, LNAV/VNAV NA below -21°C or above 54°C. For inop ALS, increase LNAV Cat C/D visibility to 2½ SM.</p>	<p>MALSF</p>	<p>MISSED APPROACH: Climb to 1500 then climbing right turn to 3500 direct IKUFU and hold, continue climb-in-hold to 3500.</p>
-----------	--	--------------	---

AWOS-3P 124.3	ANCHORAGE CENTER 118.15 251.05	CLNC DEL 118.15	CTAF 122.1
-------------------------	--	---------------------------	----------------------



CATEGORY	A	B	C	D
LPV DA	347-1 250 (300-1)			
LNAV/VNAV DA	994-4 897 (900-4)			
LNAV MDA	860-1 763 (800-1)	860-2 763 (800-2)		
C CIRCLING	860-1 763 (800-1)	860-1¼ 763 (800-1¼)	860-2½ 763 (800-2½)	1200-3 1103 (1200-3)

HIRL Rwy 11-29