

RNAV (RNP) Z RWY 7R

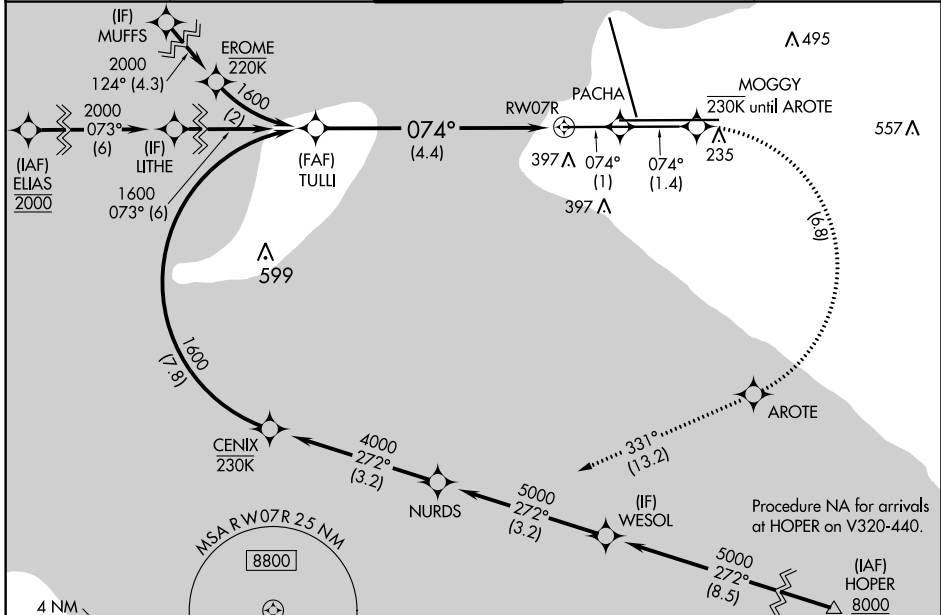
TED STEVENS ANCHORAGE INTL (ANC) (PANC)

APP CRS	Rwy Idg	12400
074°	TDZE	132
	Apt Elev	151

RF required. GPS required. Missed approach requires RNP less than 1.0. For uncompensated Baro-VNAV systems, procedure NA below -18°C (0°F) or above 54°C (130°F). For inop ALS, increase RNP 0.30 all Cats visibility to 1 3/8 SM.

ALSF-2
 MISSED APPROACH: Climb to 3000 on the missed approach route to JUKEP and hold.

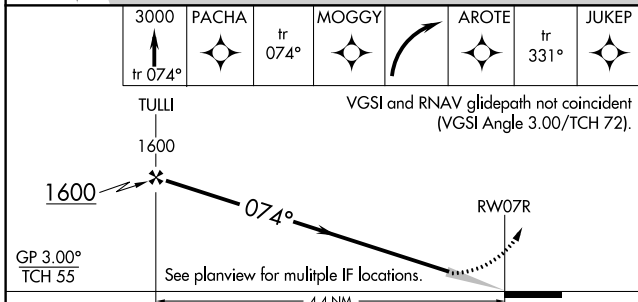
D-ATIS	ANCHORAGE APP CON	ANCHORAGE TOWER	GND CON	CLNC DEL
135.5	118.6 290.5	118.3 257.8	121.9 338.25	119.4 323.1



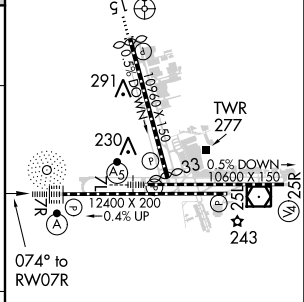
AK, 24 MAY 2018 to 19 JUL 2018

AK, 24 MAY 2018 to 19 JUL 2018

RADAR REQUIRED



ELEV 151	D TDZE 132
----------	-------------------



CATEGORY	A	B	C	D
RNP 0.30 DA	562/50 430 (500-1)			
AUTHORIZATION REQUIRED				

REIL Rwy 33
 TDZ/CL Rwys 7L and 7R
 HIRL all Rwys