

APP CRS 329°	Rwy Idg 10694
	TDZE 121
	Apt Elev 151

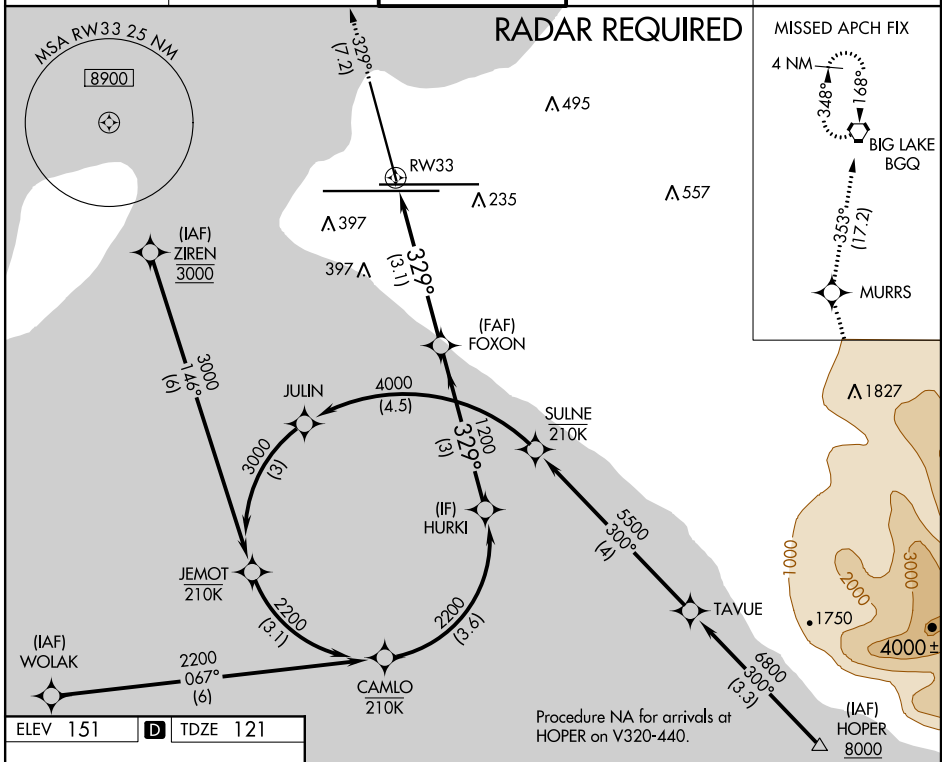
RNAV (RNP) RWY 33

TED STEVENS ANCHORAGE INTL (ANC) (PANC)

For uncompensated Baro-VNAV systems, procedure NA below -23°C (-9°F) or above 47°C (117°F).
RF required. GPS required.

MISSED APPROACH: Climb to 4000 on the RNAV missed approach route to BQG VORTAC and hold.

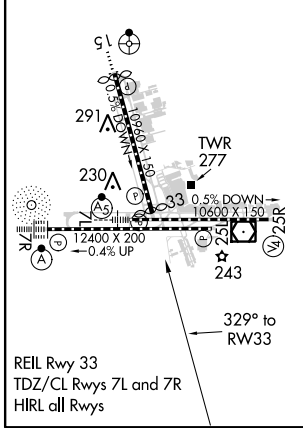
D-ATIS 135.5	ANCHORAGE APP CON 118.6 290.5	ANCHORAGE TOWER 118.3 257.8	GND CON 121.9 338.25	CLNC DEL 119.4 323.1
------------------------	---	---------------------------------------	--------------------------------	--------------------------------



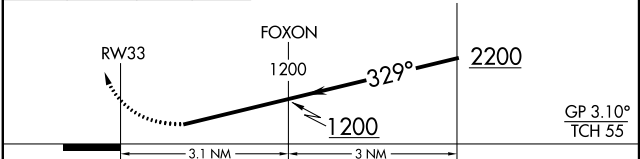
AK, 01 FEB 2018 to 29 MAR 2018

AK, 01 FEB 2018 to 29 MAR 2018

ELEV 151	D	TDZE 121
----------	----------	----------



4000	MURRS	tr 329°	BQG	VGSI and RNAV glidepath not coincident (VGSI Angle 3.00/TCH 65).
			tr 353°	



CATEGORY	A	B	C	D
RNP 0.11 DA		545-1 ³ / ₈	424 (400-1 ¹ / ₂)	
RNP 0.20 DA		654-1 ³ / ₄	533 (600-1 ³ / ₄)	
RNP 0.30 DA		722-2	601 (600-2)	

AUTHORIZATION REQUIRED