


WAAS CH 81815 W07A	APP CRS 072°	Rwy Idg 12400 TDZE 132 Apt Elev 151
--	------------------------	--

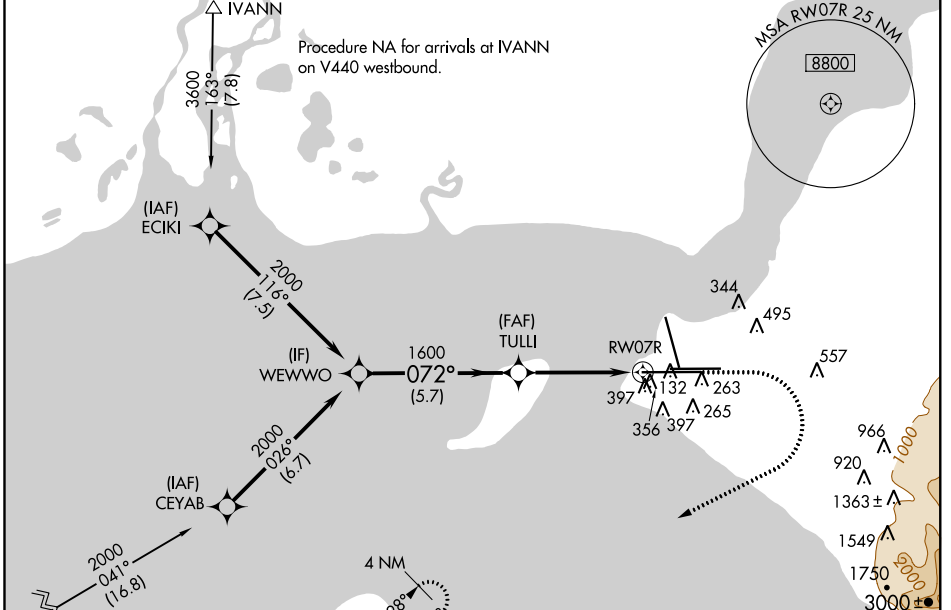
RNAV (GPS) Y RWY 7R

TED STEVENS ANCHORAGE INTL (ANC) (PANC)

▼ For uncompensated Baro-VNAV systems, LNAV/VNAV NA below -24°C (-11°F) or above 43°C (109°F). DME/DME RNP-0.3 NA. For inop ALSF, increase LNAV/VNAV all Cats visibility to 1¾ mile, and LNAV Cat C and D visibility to 1½ mile. Night landing: Rwy 25 operational VGSI required, remain on or above VGSI glidepath until threshold.

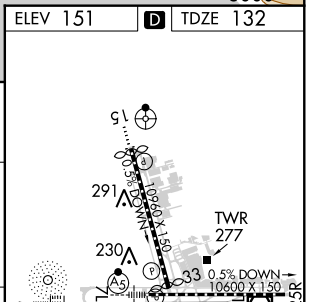
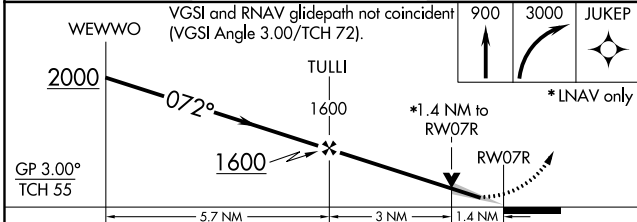
ALSF-2  MISSED APPROACH: Climb to 900 then climbing right turn to 3000 direct JUKEP and hold.

D-ATIS 135.5	ANCHORAGE APP CON 118.6 290.5	ANCHORAGE TOWER 118.3 257.8	GND CON 121.9 338.25	CLNC DEL 119.4 323.1
------------------------	---	---------------------------------------	--------------------------------	--------------------------------



GASTO Procedure NA for arrivals at GASTO on V462 southwest bound.

JUKEP $\pm 028^\circ$ $\pm 208^\circ$



CATEGORY	A	B	C	D
LPV DA		332/24	200 (200-½)	
LNAV/VNAV DA		660-1¾	528 (600-1¾)	
LNAV MDA	640/24	508 (500-½)	640/55	508 (500-1¼)
C CIRCLING	740-1	589 (600-1)	740-1½	800-2
			589 (600-1½)	649 (700-2)

REIL Rwy 33
TDZ/CL Rwsy 7L and 7R
HIRL all Rwsy

AK, 07 DEC 2017 to 01 FEB 2018

AK, 07 DEC 2017 to 01 FEB 2018