

WAAS CH 90115 W15A	APP CRS 149°	Rwy Idg 10094 TDZE 151 Apt Elev 151
--	------------------------	--

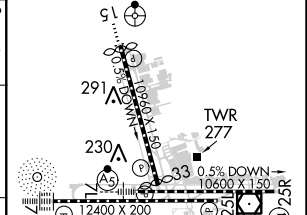
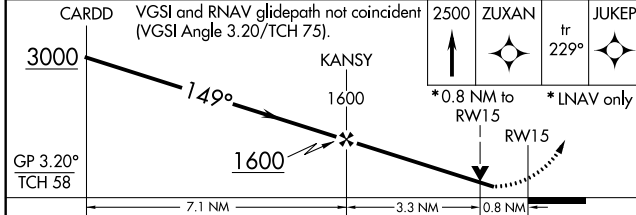
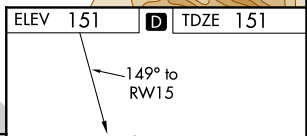
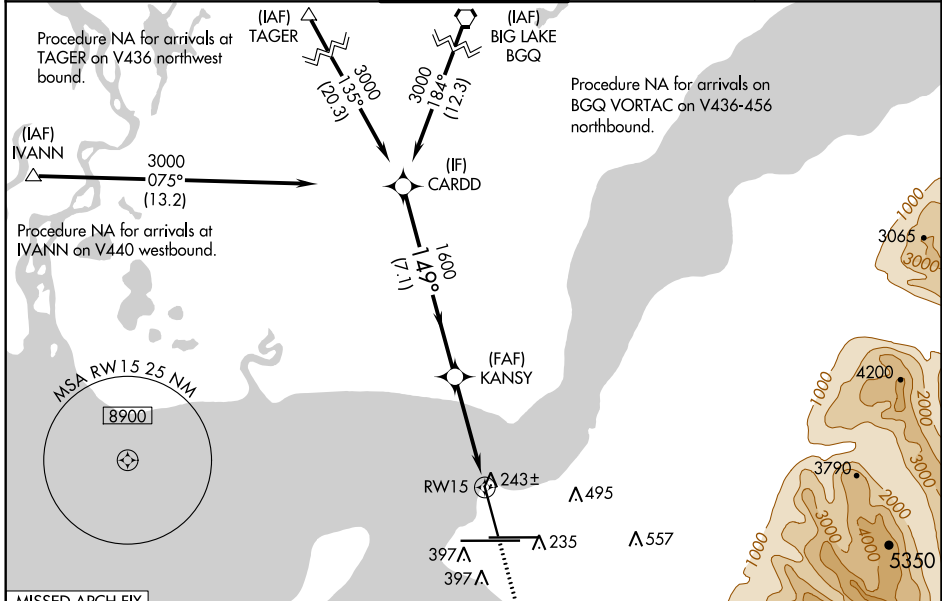
RNAV (GPS) RWY 15

TED STEVENS ANCHORAGE INTL (ANC) (PANC)

⚠ Inop table does not apply to LNAV/VNAV. For uncompensated Baro-VNAV systems, LNAV/VNAV NA below -25°C (-13°F) or above 54°C (130°F). Rwy 15 helicopter visibility reduction below RVR 4000 NA. DME/DME RNP-0.3 NA. For inop ODALS, increase LPV all Cats visibility to RVR 4500, and LNAV Cats C/D visibility to RVR 5500.

ODALS
 MISSED APPROACH: Climb to 2500 direct ZUXAN on track 229° to JUKEP and hold.

D-ATIS 135.5	ANCHORAGE APP CON 118.6 290.5	ANCHORAGE TOWER 118.3 257.8	GND CON 121.9 338.25	CLNC DEL 119.4 323.1
------------------------	---	---------------------------------------	--------------------------------	--------------------------------



CATEGORY	A	B	C	D
LPV DA		418/40	267 (300-¾)	
LNAV/VNAV DA		401/40	250 (300-¾)	
LNAV MDA	500/40	349 (400-¾)	500/45	349 (400-¾)
CIRCLING	700-1	549 (600-1)	700-1½ 549 (600-1½)	800-2 649 (700-2)

REIL Rwy 33
TDZ/CL Rws 7L and 7R
HIRL all Rws

AK, 24 MAY 2018 to 19 JUL 2018

AK, 24 MAY 2018 to 19 JUL 2018