


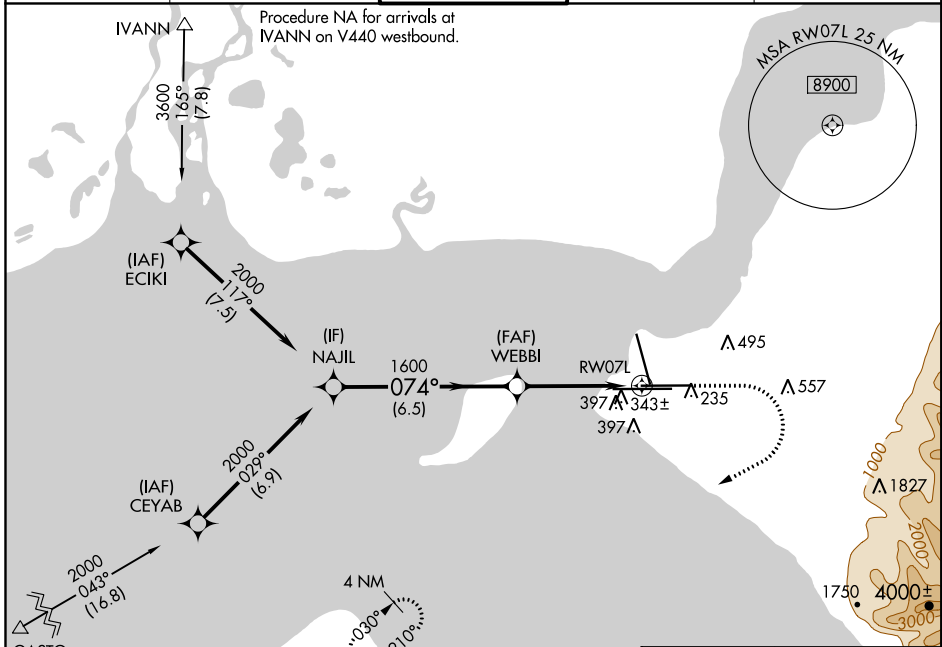
WAAS CH <b>86215</b> <b>W07B</b>	APP CRS <b>074°</b>	Rwy Idg <b>10600</b> TDZE <b>128</b> Apt Elev <b>151</b>
--	------------------------	--

# RNAV (GPS) RWY 7L

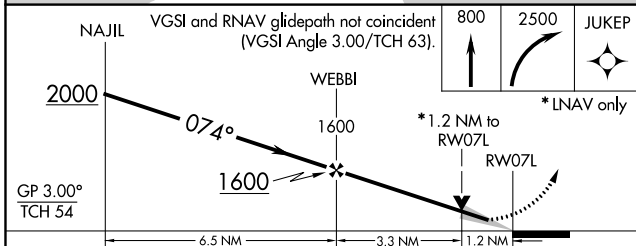
TED STEVENS ANCHORAGE INTL (ANC) (PANC)

<p><b>▽</b> For uncompensated Baro-VNAV systems, LNAV/VNAV NA below -24°C (-12°F) or above 42°C (107°F). DME/DME RNP-0.3 NA.</p>	<p>MALSR</p> 	<p>MISSED APPROACH: Climb to 800 then climbing right turn to 2500 direct JUKEP and hold.</p>

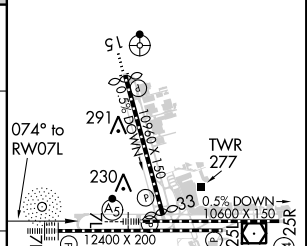
D-ATIS <b>135.5</b>	ANCHORAGE APP CON <b>118.6 290.5</b>	ANCHORAGE TOWER <b>118.3 257.8</b>	GND CON <b>121.9 338.25</b>	CLNC DEL <b>119.4 323.1</b>
------------------------	---	---------------------------------------	--------------------------------	--------------------------------



Procedure NA for arrivals at GASTO on V462 southwest bound.



ELEV 151	<b>D</b> TDZE 128
----------	-------------------



CATEGORY	A	B	C	D
LPV DA	328/18 200 (200-½)			
LNAV/VNAV DA	601/60 473 (500-1¼)			
LNAV MDA	600/24	472 (500-½)	600/50	472 (500-1)
CIRCLING	700-1	549 (600-1)	700-1½ 549 (600-1½)	800-2 649 (700-2)

REIL Rwy 33  
TDZ/CL Rwys 7L and 7R  
HIRL all Rwys

AK, 01 FEB 2018 to 29 MAR 2018

AK, 01 FEB 2018 to 29 MAR 2018