

AK, 17 AUG 2017 to 12 OCT 2017

TOP ALTITUDE:  
FL200

- D-ATIS 135.5
- CINC DEL 119.4 323.1
- GND CON 121.9 338.25
- ANCHORAGE TOWER 118.3 257.8
- ANCHORAGE DEP CON 118.6 290.5



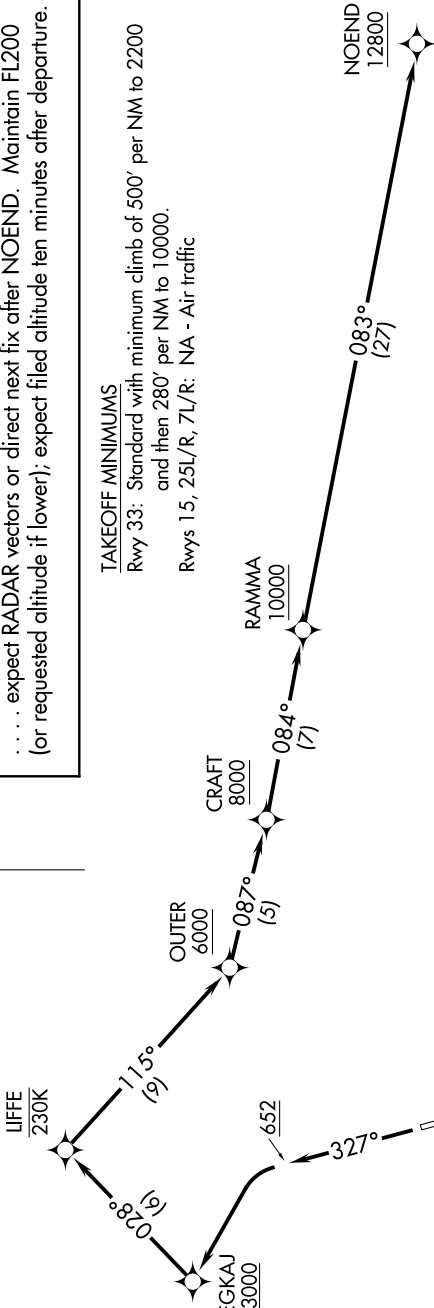
DEPARTURE ROUTE DESCRIPTION

**TAKEOFF RUNWAY 33:** Climb heading 327° to 652, then left turn direct to cross EGKAJ at or above 3000, then on track 028° to LIFFE, then on track 115° to cross OUTER at or above 6000, then on track 087° to cross CRAFT at or above 8000, then on track 084° to cross RAMMA at or above 10000, then on track 083° to cross NOEND at or above 12800 thence. . . .

. . . . expect RADAR vectors or direct next fix after NOEND. Maintain FL200 (or requested altitude if lower!); expect filed altitude ten minutes after departure.

TAKEOFF MINIMUMS

Rwy 33: Standard with minimum climb of 500' per NM to 2200 and then 280' per NM to 10000.  
Rwys 15, 25L/R, 7L/R: NA - Air traffic



- NOTE: GPS required.
- NOTE: RNAV-1.
- NOTE: RADAR required.
- NOTE: Do not exceed 230K until passing LIFFE.

TAKEOFF OBSTACLE NOTES

Rwy 33: Trees, bush and navaid beginning 10' from DER, 85' left of centerline, up to 60' AGL/82' MSL.  
Trees beginning 390' from DER, 326' right of centerline, up to 60' AGL/232' MSL.

NOTE: Chart not to scale.

AK, 17 AUG 2017 to 12 OCT 2017