

LOC/DME I-ANC 111.3 Chan 50	APP CRS 072°	Rwy ldg 12400 TDZE 132 Apt Elev 151
--	------------------------	--

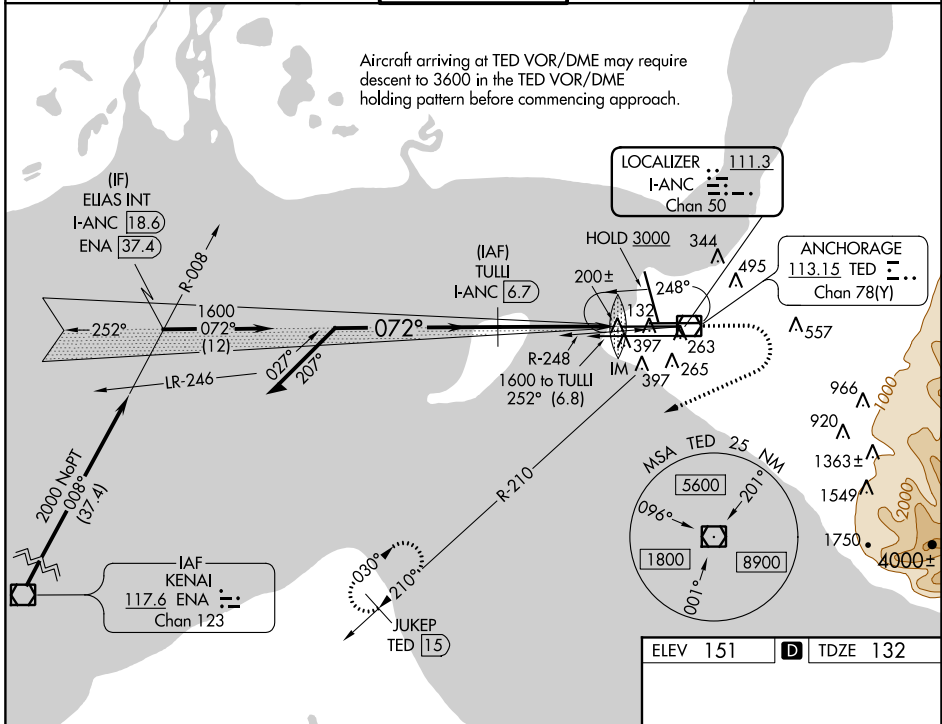
ILS RWY 7R (CAT II & III)

TED STEVENS ANCHORAGE INTL (ANC) (PANC)

<p>⚠ CAT II: RVR 1000 authorized with specific OPSPEC, MSPEC, or LOA approval and use of Autoland or HUD to touchdown. Rwy 7L threshold 6140 feet east of Rwy 7R threshold.</p>	<p>ALSIF-2</p>	<p>MISSED APPROACH: Climb to 600 then climbing right turn to 2500 on TED VOR/DME R-210 to JUKEP/TED 15 DME and hold.</p>
	<p>D-ATIS 135.5</p>	<p>ANCHORAGE APP CON 118.6 290.5</p>

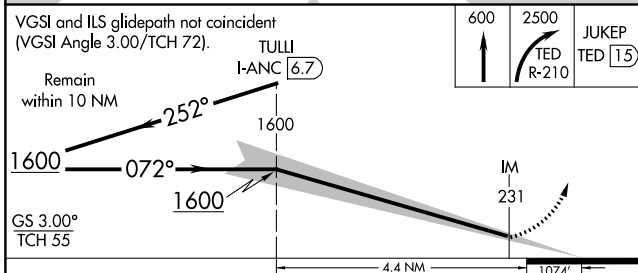
<p>GND CON 121.9 338.25</p>	<p>CLNC DEL 119.4 323.1</p>
--	--

Aircraft arriving at TED VOR/DME may require descent to 3600 in the TED VOR/DME holding pattern before commencing approach.

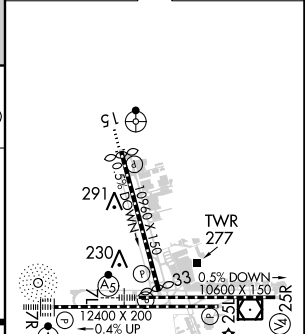


AK, 17 AUG 2017 to 12 OCT 2017

AK, 17 AUG 2017 to 12 OCT 2017



ELEV 151	D TDZE 132
----------	-------------------



CATEGORY	A	B	C	D
S-ILS 7R	CAT II RA 115/12 100 DA 232			
S-ILS 7R	CAT III RVR 06			

CATEGORY II & III ILS - SPECIAL AIRCREW & AIRCRAFT CERTIFICATION REQUIRED

REIL Rwy 33
TDZ/CL Rwy 7L and 7R
HIRL all Rwy