

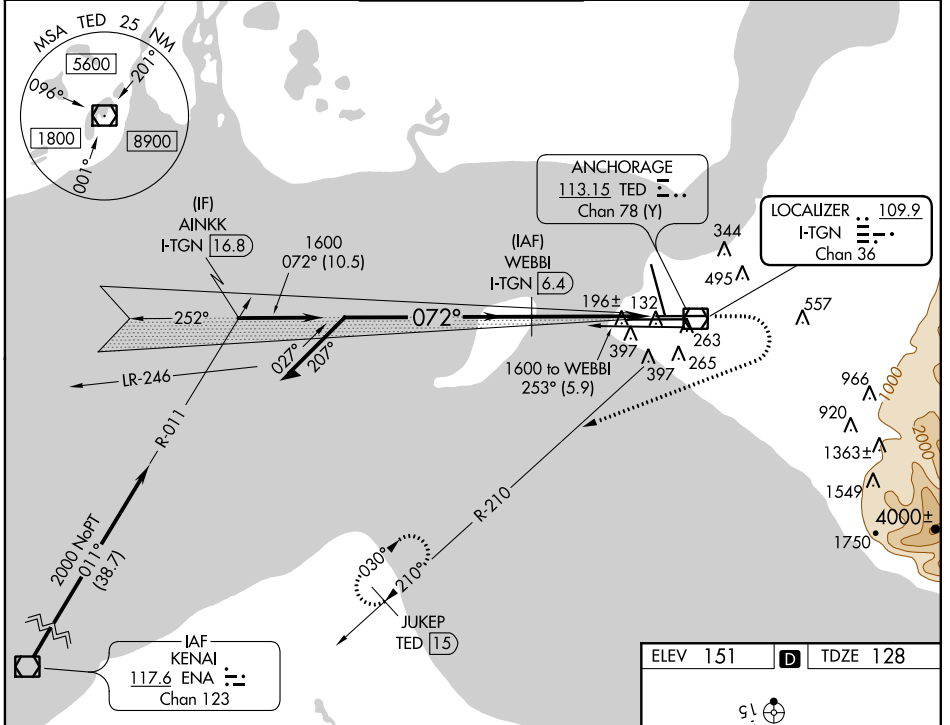
LOC/DME I-TGN 109.9 Chan 36	APP CRS 072°	Rwy Idg 10600 TDZE 128 Apt Elev 151
--	------------------------	--

ILS or LOC/DME RWY 7L

TED STEVENS ANCHORAGE INTL (ANC)(PANC)

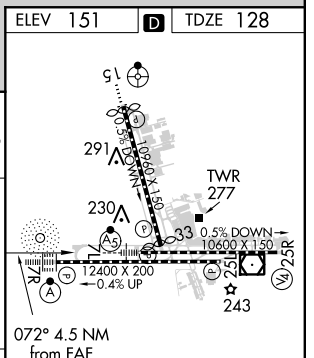
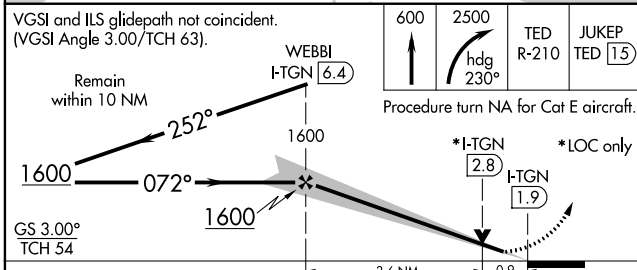
	For inop MALSR, increase S-ILS 7L Cat E visibility to RVR 4000, S-LOC 7L Cats C, D and E visibility to RVR 5500. DME required.	MALSR	MISSED APPROACH: Climb to 600 then climbing right turn to 2500 via heading 230° and TED VOR/DME R-210 to JUKEP/TED 1.5 DME and hold.
--	--	-------	--

D-ATIS 135.5	ANCHORAGE APP CON 118.6 290.5	ANCHORAGE TOWER 118.3 257.8	GND CON 121.9 338.25	CLNC DEL 119.4 323.1
------------------------	---	---------------------------------------	--------------------------------	--------------------------------



AK, 17 AUG 2017 to 12 OCT 2017

AK, 17 AUG 2017 to 12 OCT 2017



CATEGORY	A	B	C	D	E
S-ILS 7L	328/18 200 (200-½)				
S-LOC 7L	500/24	372 (400-½)	500/35 372 (400-¾)		
CIRCLING	700-1	549 (600-1)	700-1½ 549 (600-1½)	800-2 649 (700-2)	920-2¾ 769 (800-2¾)

REIL Rwy 33
TDZ/CL Rwys 7L and 7R
HIRL all Rwys