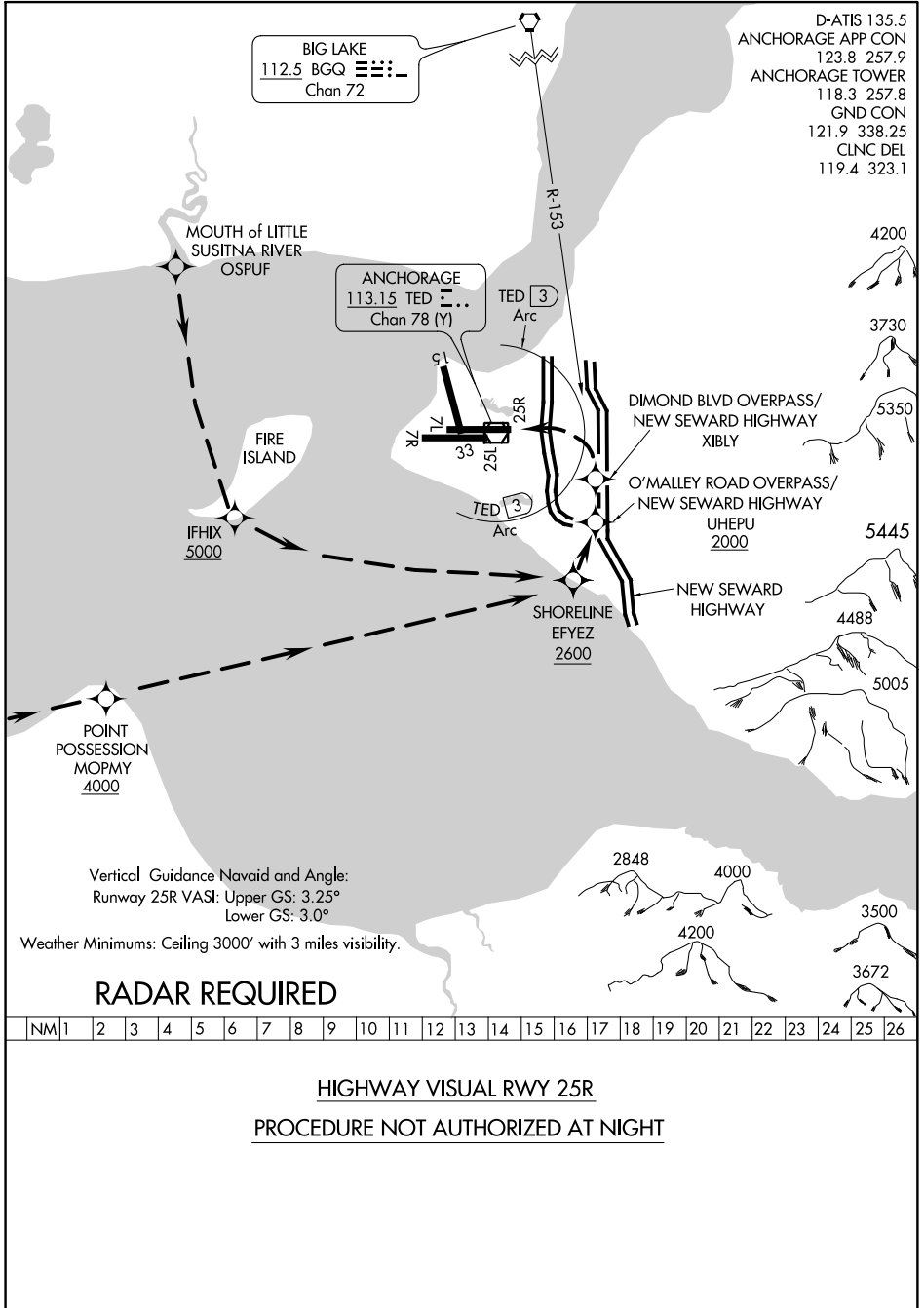


# HIGHWAY VISUAL RWY 25R

AL-1500 (FAA)

ANCHORAGE, ALASKA



D-ATIS 135.5  
 ANCHORAGE APP CON 123.8 257.9  
 ANCHORAGE TOWER 118.3 257.8  
 GND CON 121.9 338.25  
 CLNC DEL 119.4 323.1

ANCHORAGE  
 113.15 TED   
 Chan 78 (Y)

BIG LAKE  
 112.5 BQG   
 Chan 72

Vertical Guidance Navaid and Angle:  
 Runway 25R VASI: Upper GS: 3.25°  
 Lower GS: 3.0°

Weather Minimums: Ceiling 3000' with 3 miles visibility.

## RADAR REQUIRED

NM	1	2	3	4	5	6	7	8	9	10	11	12	13	14	15	16	17	18	19	20	21	22	23	24	25	26
----	---	---	---	---	---	---	---	---	---	----	----	----	----	----	----	----	----	----	----	----	----	----	----	----	----	----

HIGHWAY VISUAL RWY 25R  
PROCEDURE NOT AUTHORIZED AT NIGHT

# HIGHWAY VISUAL RWY 25R

61°10'N-150°00'W

ANCHORAGE, ALASKA

AK, 01 FEB 2018 to 29 MAR 2018

AK, 01 FEB 2018 to 29 MAR 2018