

AK, 17 AUG 2017 to 12 OCT 2017

TOP ALTITUDE:
10000

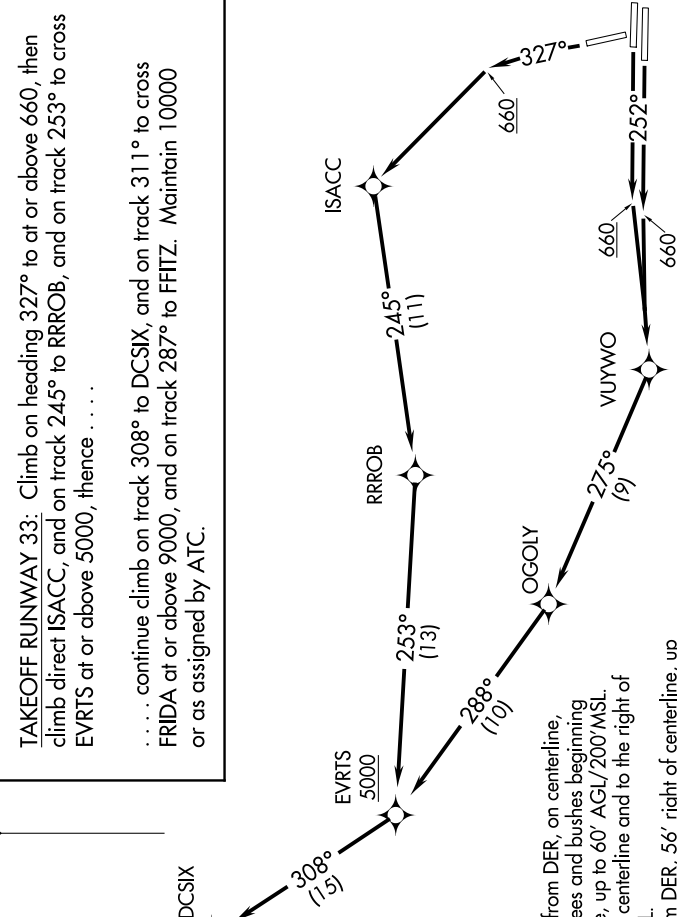
D-ATIS
135.5
CLNC DEL
119.4 323.1
GND CON
121.9 338.25
ANCHORAGE TOWER
118.3 257.8
ANCHORAGE DEP CON
118.6 290.5

DEPARTURE ROUTE DESCRIPTION

TAKEOFF RUNWAYS 25L/R: Climb on heading 252° to at or above 660, then climb direct VUYWO, and on track 275° to OGOLY, and on track 288° to cross EVRTS at or above 5000, hence

TAKEOFF RUNWAY 33: Climb on heading 327° to at or above 660, then climb direct ISACC, and on track 245° to RRROB, and on track 253° to cross EVRTS at or above 5000, hence

. . . . continue climb on track 308° to DCSIX, and on track 311° to cross FRIDA at or above 9000, and on track 287° to FFITZ. Maintain 10000 or as assigned by ATC.



TAKEOFF MINIMUMS
Rwys 7L/R, 15: NA-Air Traffic
Rwys 25L/R, 33: Standard

NOTE: Propeller-driven aircraft only.
NOTE: GPS required.
NOTE: RADAR required.
NOTE: RNAV-1.

TAKEOFF OBSTACLE NOTES

Rwy 25L: Multiple navaid items beginning 4' from DER, on centerline, up to 3' AGL/135' MSL. Fences, trees and bushes beginning 12' from DER, 385' left of centerline, up to 60' AGL/200' MSL. Trees beginning 396' from DER, on centerline and to the right of centerline, up to 60' AGL/177' MSL.

Rwy 25R: Bush and navaid beginning 10' from DER, 56' right of centerline, up to 3' AGL/129' MSL.

Rwy 33: Trees, bush and navaid beginning 10' from DER, 85' left of centerline, up to 60' AGL/182' MSL. Trees beginning 390' from DER, 326' right of centerline, up to 60' AGL/232' MSL.

NOTE: Chart not to scale.

AK, 17 AUG 2017 to 12 OCT 2017