



PILOT INFORMATION PACKET

Aircraft Owners and Pilots Association (AOPA) Fly-In
Salinas Municipal Airport (SNS)—Salinas, CA

SPECIAL FLIGHT PROCEDURES

EFFECTIVE 12:00 NOON local Friday, May 15, 2015 until
6:00 PM local Saturday, May 16, 2015



TABLE OF CONTENTS

NOTAM—Temporary VFR Procedures	1-11
VFR Arrivals Overview	1
VFR Procedures: North—Arrivals over San Juan Bautista	2-3
VFR Procedures: South—Arrivals over Camphora	4-5
IFR Arrivals	6
Temporary Salinas Airport Closure for Aerobatic Demonstration	6
Local Training and Practice	6
Cautions	6
Salinas Municipal Airport Frequencies	7
Specific Latitude/Longitude Coordinates	7
General Information	8
Parking Areas	8
Vehicular Traffic	8
Preflight Planning	8
IFR Departure Procedures	9
VFR Departures	9
VFR Flight Following	9
Prior to Start-up	9
Engine Start	9
Taxi	9
Run-up	9
Departure	9
VFR Holding Pattern	10-11
North—San Juan Bautista	10
South—Camphora	11
Additional Information	12-14
Host FBO information	12
Parking and Service Details	12
Fuel Discount	12
Chocks and Tie Downs	12
After-hours departures	13
Camping	13
DTC Flight Planning	13
Rental car availability	13

TABLE OF CONTENTS CONTINUED

Other Area Airports 13-14

Monterey Regional Airport (MRY)..... 13

Marina Municipal Airport (OAR)..... 13

Watsonville Municipal Airport (WVI) 14

Hollister Municipal Airport (CVH)..... 14

South County Airport of Santa Clara County (E16) 14

Mesa Del Rey Airport (RIC) 14

Additional Graphics.....15-20

Arriving Salinas from Camphora—Extended Runways 15

Arriving Salinas from San Juan Bautista—Extended Runways..... 15

Salinas Municipal Airport—Airport Diagram..... 16

Hollister Municipal Airport (CVH)—Satellite View with Frequencies..... 17

Marina Municipal Airport (OAR)—Satellite View with Frequencies 17

Mesa Del Rey Airport (KIC)—Satellite View with Frequencies..... 18

Monterey Regional Airport (MRY)—Satellite View with Frequencies..... 18

South County Airport of Santa Clara (E16)—Satellite View with Frequencies 19

Watsonville Municipal Airport (WVI)—Satellite View with Frequencies..... 19

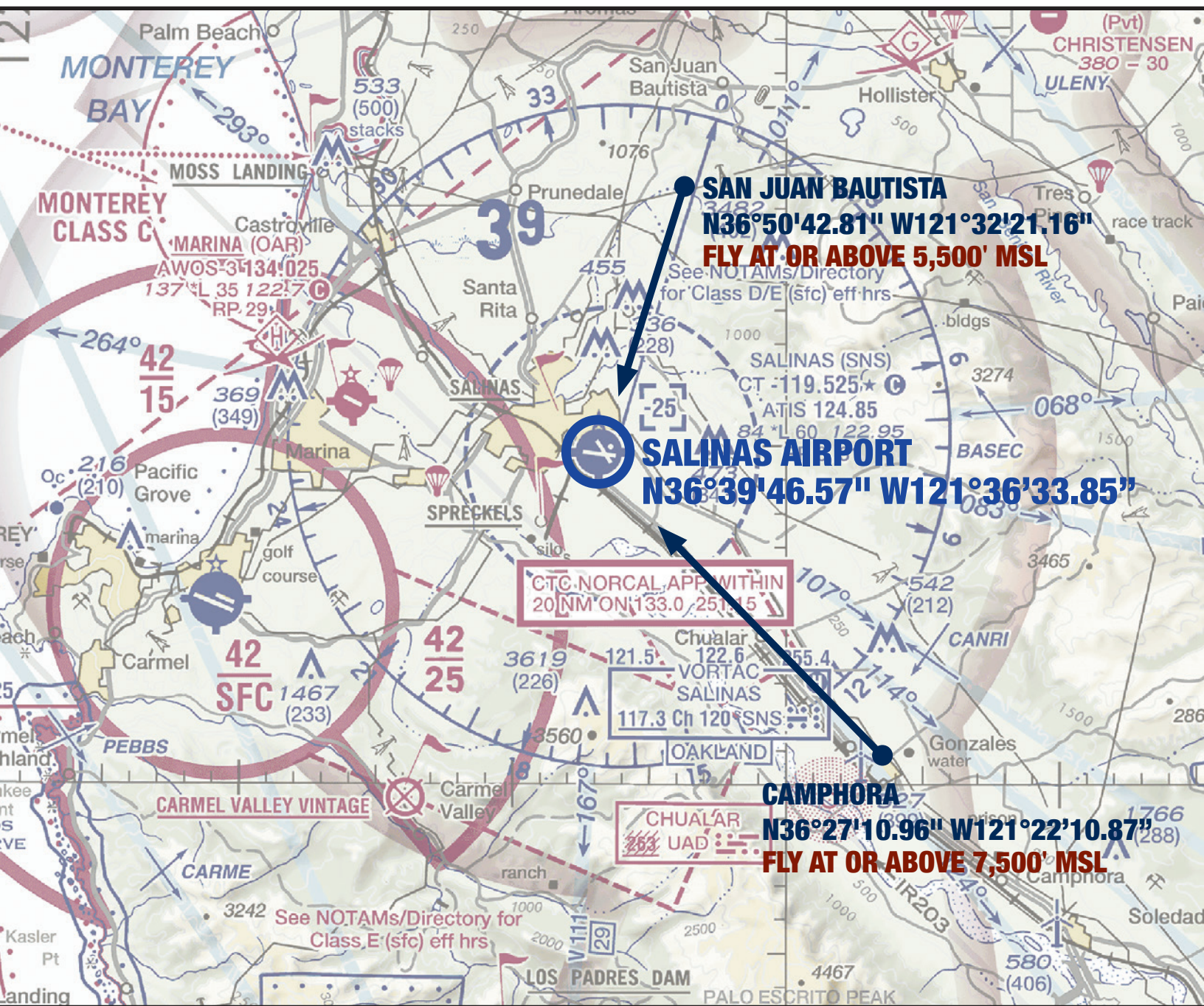
AOPA Salinas Fly-In Windshield Graphic—Printable 20

Kneeboard Quick Reference Graphics..... 21-22

VFR Arrivals: North - San Juan Bautista Arrivals & Hold..... 21

VFR Arrivals: South - Camphora Arrivals & Hold..... 22

VFR ARRIVALS OVERVIEW



NORCAL APPROACH: 133.0

SALINAS TOWER: 119.525

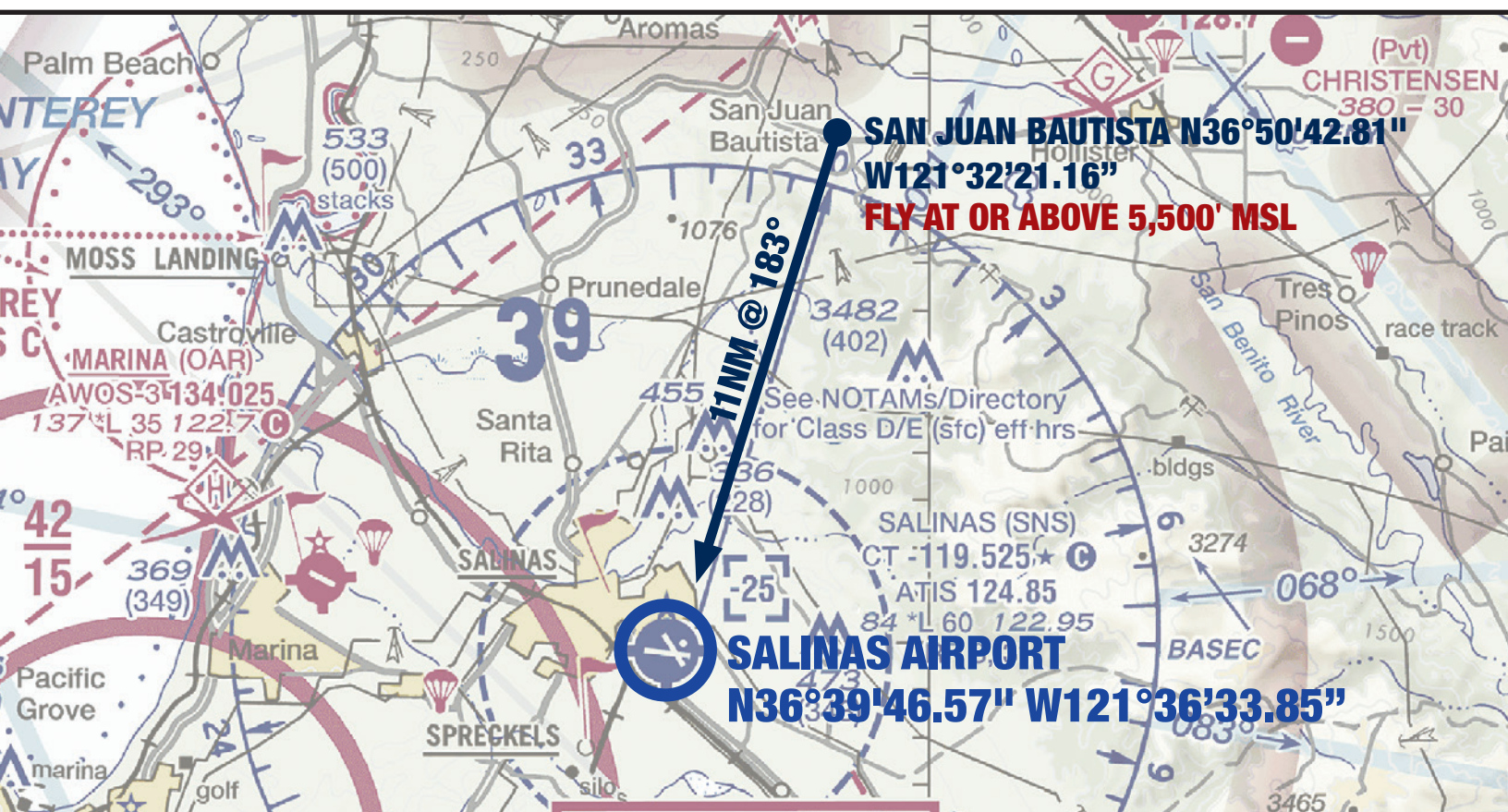
All VFR arrivals must begin over the town of San Juan Bautista (11 NM NE of Salinas Airport) or the town of Camphora (17 NM SE of Salinas Airport.)

TEMPORARY VFR PROCEDURES

Specific procedures contained within this NOTAM may be revised at the time of the event. Pilots are urged to review all applicable NOTAMs and arrival/departure procedures prior to conducting a flight to Salinas Municipal

Airport. Users are encouraged to check NOTAMs frequently to verify they possess the most current revisions. This NOTAM does not supersede restrictions pertaining to the use of airspace contained in FDC NOTAMS.

VFR PROCEDURES: NORTH - ARRIVALS OVER SAN JUAN BAUTISTA



NORCAL APPROACH: 133.0

SALINAS TOWER: 119.525

Check ATIS on 124.85 as soon as practical.

Please note the temporary **AIRPORT CLOSURE** on Saturday for aerobatic demonstration (11:30AM-1:30PM local)

AOPA Note: Airport closure will be some time between 11:30AM-1:30PM local and will last approximately 10-15 minutes.

Arrival procedure from the north begins over San Juan Bautista at or above 5,500 feet MSL.

Request VFR traffic advisories well in advance of arriving over San Juan Bautista. If not already in communication with ATC, contact

NorCal Approach on 133.0 prior to arriving over San Juan Bautista.

Do not proceed beyond San Juan Bautista until communication has been established with either NorCal Approach on 133.0 or Salinas Tower on 119.525.

Caution: Stay alert for converging traffic.

In the event traffic volume requires holding, follow the holding procedure in the San Juan Bautista holding graphic. When holding is no longer required, return to San Juan Bautista and then proceed toward Salinas Municipal Airport.

After overflying San Juan Bautista, begin descent to traffic pattern

altitude (Light Aircraft 883 MSL; Turbine Aircraft 1509 MSL) at pilot's discretion.

Expect NorCal Approach (133.0) to transfer communication to Salinas Tower (119.525) approximately 7 nautical miles from Salinas Municipal Airport.

Follow instructions from Salinas Tower on 119.525.

After landing, exit the runway as quickly and as safely as possible. Do not stop on the runway unless absolutely necessary. Follow taxi instructions and directional signs to the designated parking areas. Marshalls will direct aircraft to the parking spaces.

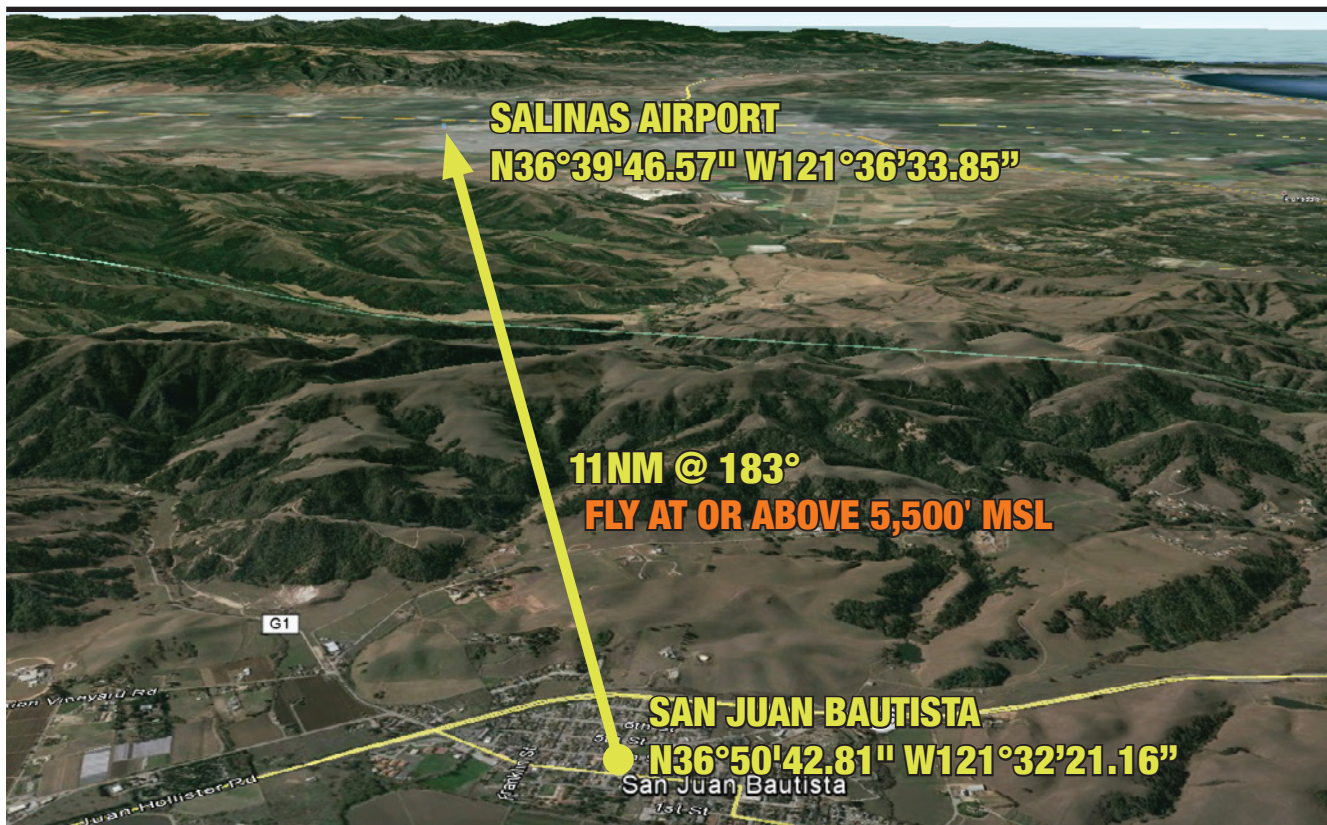
VFR PROCEDURES: NORTH - ARRIVALS OVER SAN JUAN BAUTISTA

NORCAL APPROACH: 133.0

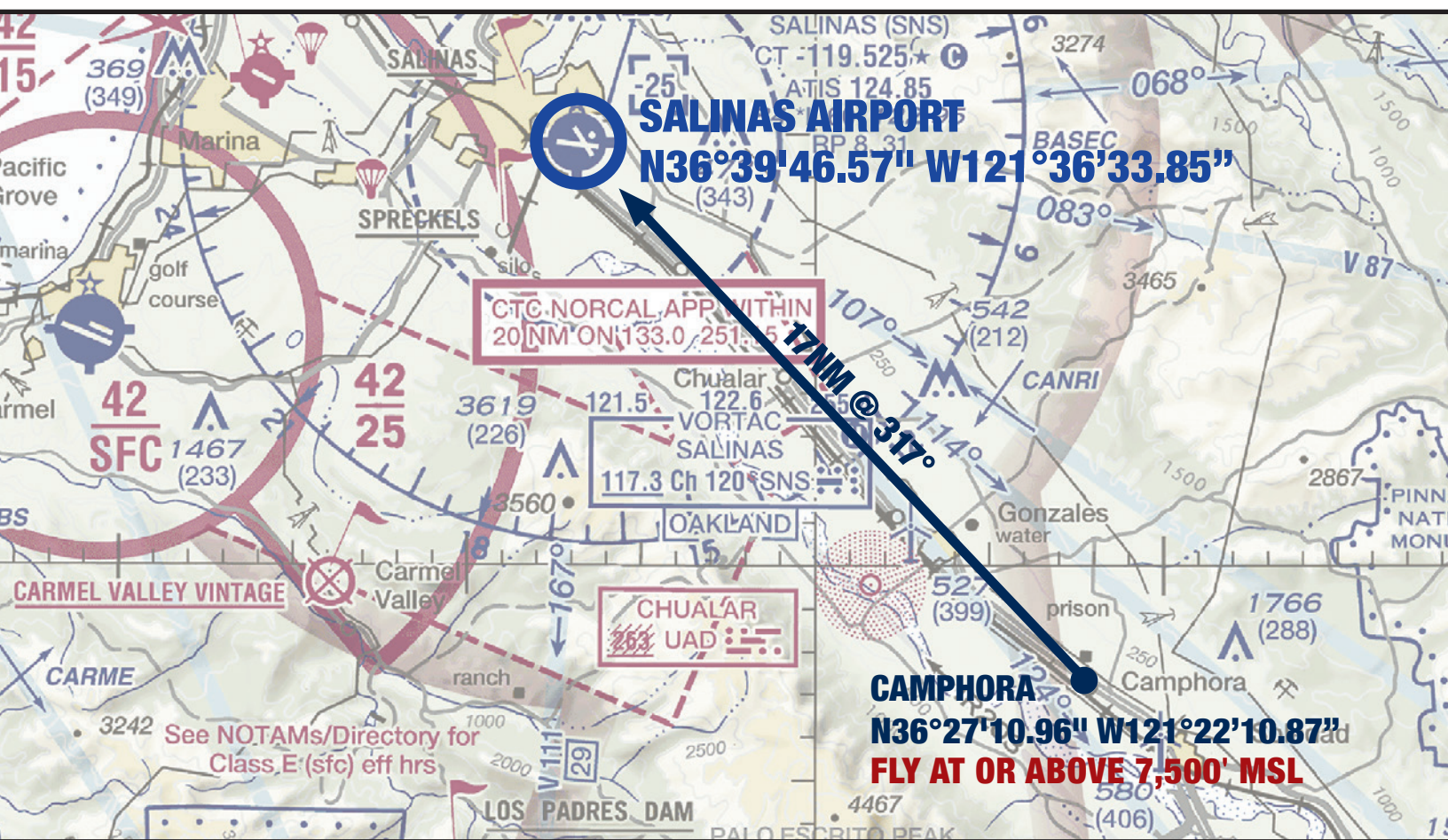
SALINAS TOWER: 119.525



VFR PROCEDURES: NORTH - ARRIVING OVER SAN JUAN BAUTISTA LOOKING SOUTHWEST TOWARD SALINAS



VFR PROCEDURES: SOUTH - ARRIVALS OVER CAMPHORA



NORCAL APPROACH: 133.0

SALINAS TOWER: 119.525

Check ATIS on 124.85 as soon as practical.

Please note the temporary **AIRPORT CLOSURE** on Saturday for aerobatic demonstration (11:30 AM-1:30 PM local)

AOPA Note: Airport closure will be some time between 11:30AM-1:30PM local and will last approximately 10-15 minutes.

Arrival procedure from the south begins over the town of Camphora just south of Soledad Prison at or above 7,500 feet MSL.

Request VFR traffic advisories well in advance of arriving over Camphora.

If not already in communication with ATC, contact NorCal Approach on 133.0 prior to arriving over Camphora.

Do not proceed beyond Camphora until communication has been established with either NorCal Approach on 133.0 or Salinas Tower on 119.525.

Caution: Stay alert for converging traffic.

In the event traffic volume requires holding, follow the holding procedure in the Camphora holding graphic. When holding is no longer required, return to Camphora and proceed toward Salinas Municipal Airport. After overflying Camphora, begin descent to traffic pattern altitude (Light

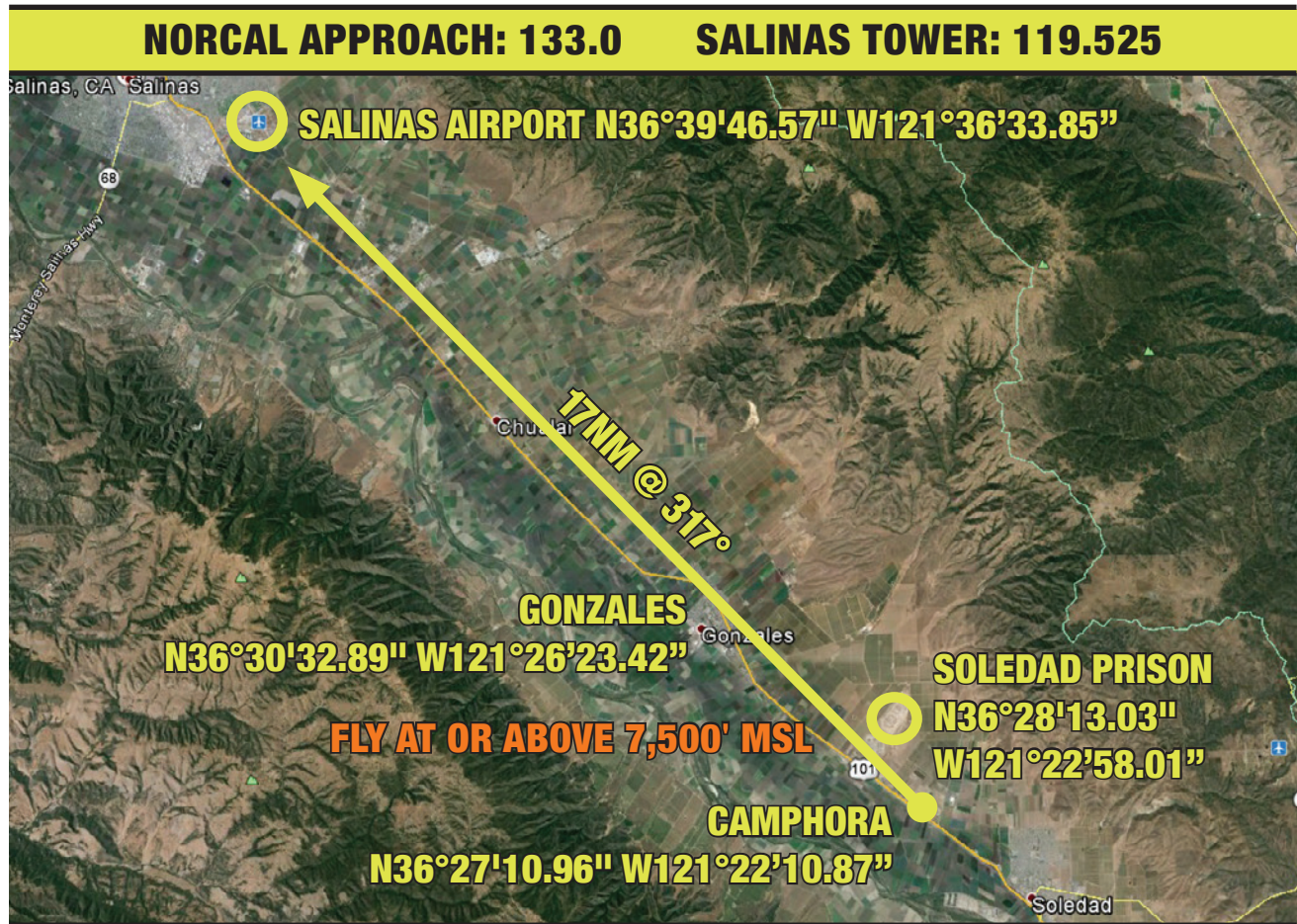
Aircraft 883 MSL; Turbine Aircraft 1509 MSL) at pilot's discretion.

Expect NorCal Approach (133.0) to transfer communication to Salinas Tower (119.525) approximately 7 nautical miles from Salinas Municipal Airport.

Follow instruction from Salinas Tower on 119.525.

After landing, exit the runway as quickly and as safely as possible. Do not stop on the runway unless absolutely necessary. Follow taxi instructions and directional signs to the designated parking areas. Marshalls will direct aircraft to the parking spaces.

VFR PROCEDURES: SOUTH - ARRIVALS OVER CAMPHORA



VFR PROCEDURES: SOUTH - ARRIVING OVER CAMPHORA LOOKING NORTHWEST TOWARD SALINAS



IFR ARRIVALS

IFR Delays

IFR arrivals will be integrated with VFR traffic. However IFR separation requirements may cause delays when arrival rates exceed airport capacity. Pilots on an IFR flight plan should be prepared for the potential holding at Salinas Municipal Airport. IFR flight plans to Salinas Airport should be filed at least 6 hours prior to proposed departure time.

TEMPORARY SALINAS AIRPORT CLOSURE FOR AEROBATIC DEMONSTRATION

There will be a 10-15 minute aerobatic demonstration between 11:30 AM-1:30 PM local on Saturday, May 16, 2015 during the AOPA Fly-in. Arrivals and departures will be stopped for the duration of the demonstration. Please plan accordingly.

LOCAL TRAINING & PRACTICE

Local traffic pattern, closed traffic training, and practice instrument approaches **may not** be available at Salinas Municipal Airport during the AOPA Fly-In.

CAUTIONS

Class C Airspace Monterey Regional Airport (MRY)

Class B and Class C airspace north of Salinas Municipal Airport

High volume traffic 6,000-11,000 feet MSL from Licke Intersection to Hollister Municipal Airport (CVH)

Parachute and glider activity near Marina Municipal Airport (OAR), Hollister Municipal Airport (CVH), and Watsonville Municipal Airport (WVI)

Intensive aerobatic activity in the vicinity of Mesa Del Ray Airport (KIC)

Restricted airspace and military operations areas in the vicinity of Salinas Municipal Airport

Monterey Bay National Marine Sanctuary along the coast

Pinnacles National Monument southeast of Salinas Municipal Airport

FREQUENCIES & WAYPOINT INFORMATION

Salinas Municipal Airport Frequencies

ATIS	124.85
ASOS	Tel. 831-422-2830
Salinas Tower (5AM-7PM)	119.525
Salinas CTAF	119.4
Salinas GROUND	121.7
UNICOM	122.95
NorCal Approach/Departure	133.0

Specific Latitude/Longitude Coordinates

San Juan Bautista	N36°50'42.81"/W121°32'21.16"
Camphora	N36°27'10.96"/W121°22'10.87"
Soledad Prison	N36°28'13.03"/W121°22'58.01"
Soledad	N36°25'44.37/W121°19'27.81"
Gonzales	N36°30'32.89"/W121°26'23.42"
San Justo Reservoir	N36°49'14.27"/W121°26'34.86"
Ridgemark	N36°48'27.79"/W121°21'41.04"
Hollister	N36°50'57.69"/W121°24'05.77"
Hollister Municipal Airport	N36°53'28.13"/W121°24'27.23"
Greenfield	N36°19'17.13/W121°14'41.44"
Salinas Municipal Airport	N36°39'46.57"/W121°36'33.85"

GENERAL INFORMATION SALINAS MUNICIPAL AIRPORT



Parking Areas:

When operating in the parking areas, pilots are encouraged to be extra alert for taxiing aircraft, aircraft with engine(s) running, and vehicle/pedestrian traffic.

Marshalls will be assisting aircraft to and from parking areas and run-up areas.

For safety reasons, high RPM engine running is prohibited in designated

parking areas. For departure, it is recommended that pilots conduct their run-up procedures in queue if practical.

Please review the parking map prior to landing and departure.

Vehicular Traffic:

Vehicles are not allowed on ramps except those belonging to airport operators and tenants, and exhibitors participating in the AOPA Salinas Municipal Airport Fly-In.

Pre-flight Planning:

Please ensure that you have reviewed the special flight information, departure procedures, and temporary taxi procedures prior to engine start.

High traffic density is expected Saturday morning and afternoon. Consider arriving during off-peak hours.

DEPARTURE PROCEDURES: SALINAS MUNICIPAL AIRPORT

IFR Departures

IFR departures should obtain a clearance prior to engine start from clearance delivery on 121.7. After obtaining a clearance, locate a marshaller to monitor engine start. Follow marshallers instructions to taxi to the nearest designated IFR departure holding area. Monitor tower on 119.525 during taxi and while in the holding area for departure clearance instructions.

VFR Departures

VFR Flight Following: Pilots wanting VFR flight-following should make the request to ground on 121.7 prior to engine start. Provide intended departure heading upon contact. Follow procedures below.

Prior to Start-up: Please ensure that you have reviewed the special flight information, departure procedures, and temporary taxi procedures prior to engine start. Check ATIS on 124.85.

Engine Start: Locate a marshaller to monitor engine start.

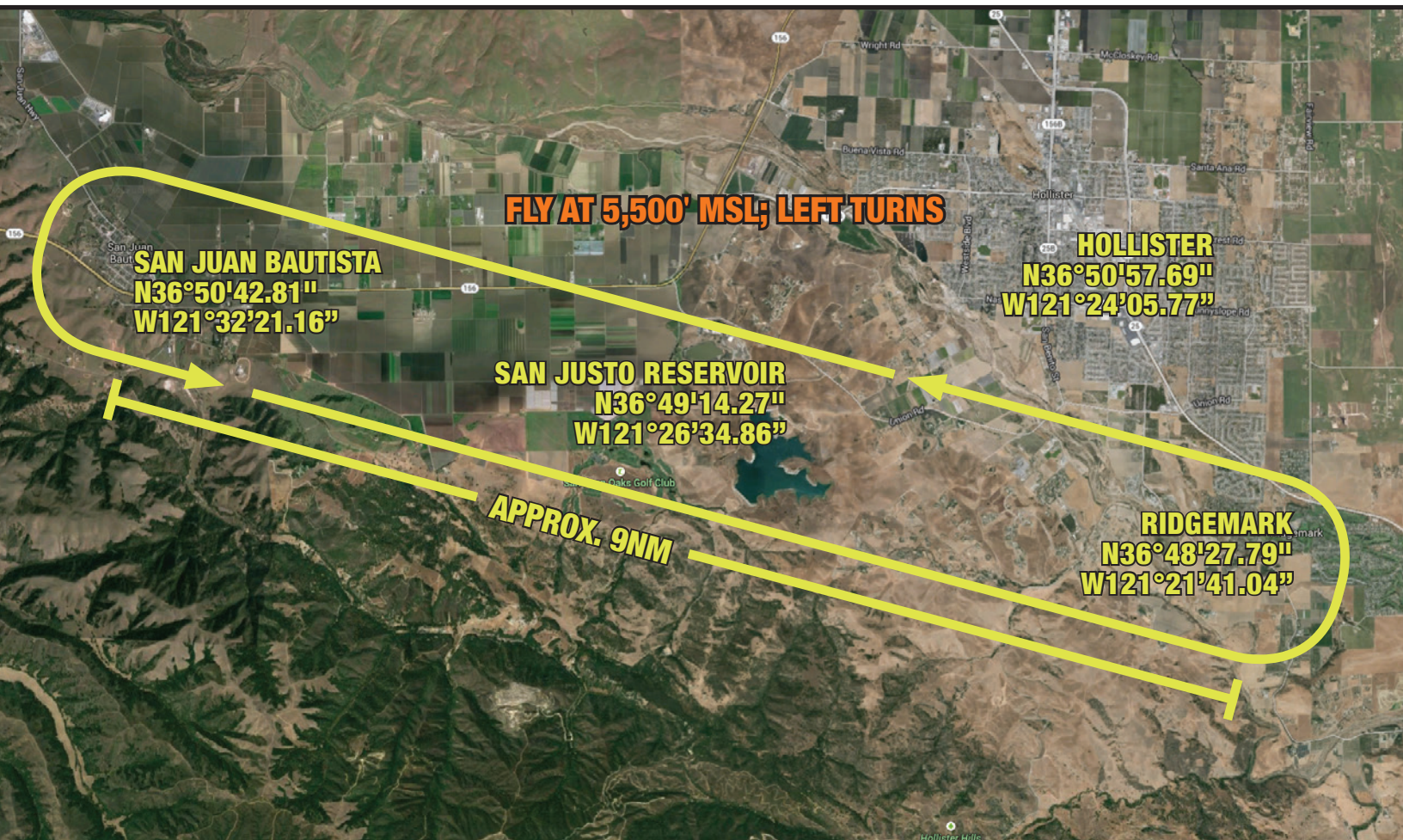
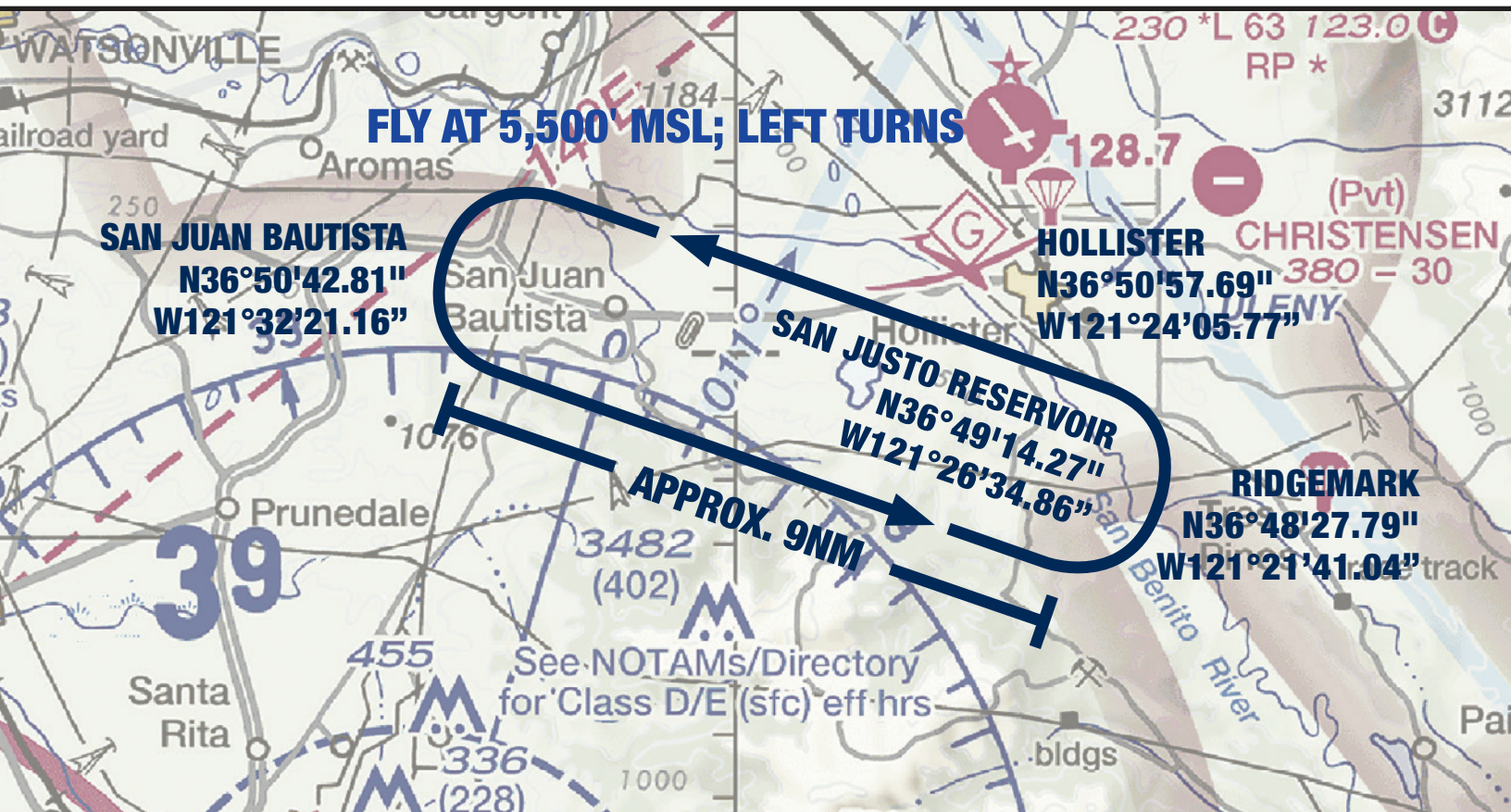
Taxi: Follow instructions from marshallers to taxi for departure runway.

Run-up: If practical, it is recommended that you conduct your run-up while in queue for departure. Please consider propeller blast during your run-up.

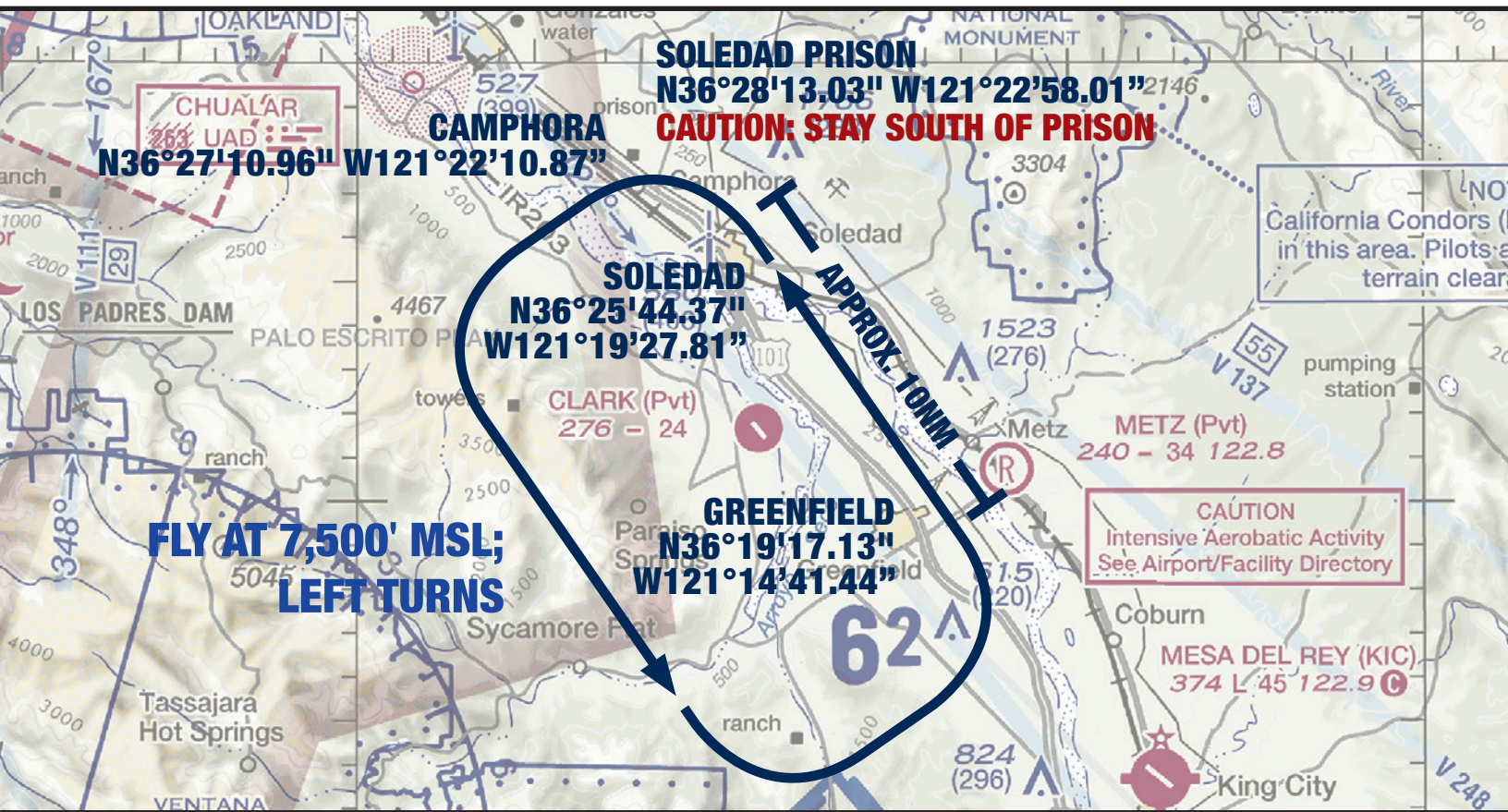
MONITOR tower on 119.525 during taxi and contact tower when number 3 for departure.

Departure: Follow instructions from tower. Once clear of Salinas Municipal Airport Class D Airspace change frequency at pilot's discretion. **(There is no need to contact tower for frequency change if you are clear of the airspace.)**

VFR HOLDING PATTERN: NORTH - SAN JUAN BAUTISTA



VFR HOLDING PATTERN: SOUTH - CAMPHORA



ADDITIONAL INFORMATION

AOPA Fly-In Host FBO

The AOPA Fly-In Host FBO at Salinas Municipal Airport (SNS) is Jet West. We thank them for their support, enthusiasm, and participation in the AOPA Fly-In at Salinas Municipal Airport.



Jet West
280 Mortensen Avenue
Salinas, CA 93905
Phone: 831-422-9400
Fax: 831-422-9480

Hours of operation: 7:00 AM – 7:00 PM/7 Days
After-hours Line Service: Available upon request.
Email: customerservice@jetwestsns.com
Website: <http://www.jetwestsalinas.com/>

Parking & Service Details

Pilots with reservations at Jet West should advise Salinas Tower on initial call to ensure upon landing that they are directed to the Jet West ramp. Marshalls will be monitoring the frequency and will be aware of what aircraft need to be directed to the Jet West ramp.

Fuel/oil orders will be taken at the time your aircraft is parked. If you need either, please make sure to make the request at that time. Orders made at a later time might delay your departure.

Credit card information will be requested at the time the order is placed. If you are uncomfortable providing credit card information on the ramp, you can call the FBO directly to provide the information. Receipts, if requested, will be available either by email or left in the door of your aircraft.

Fuel Discount

35 cents per gallon off the posted price on the day of the event.

Chocks & Tie Downs

Chocks **will not** be available in limited supply so we highly recommend that you bring your own. Tie down hooks are scattered on the ramp and parking on tie down spaces is unlikely. It is recommended that you bring tie-downs and anchors for any additional aircraft securing needs.

After-Hours Departures

If you will be departing after Jet West's normal operating hours please contact them on the phone number listed above. An after-hours callout is subject to an additional fee.

Camping

Aircraft camping will be permitted at Salinas Municipal Airport (SNS) on Friday, May 15, 2015. Space is limited and will be available on a first-come, first-served basis. There is no charge. If you plan to camp, **you must RSVP** by sending an email to events@aopa.org and put **"Camping at SNS"** in the subject line. Please include your aircraft's N number and type in the email. A confirmation will be sent with additional information. Camping aircraft will be requested to prominently place a **"C"** the windshield.



DTC Flight Planning

Check weather and file your flight plan with DTC DUAT at www.duat.com; the official weather sponsor of AOPA's Regional Fly-Ins.

Rental Car Availability



Phone: 866-315-9155

Hertz

Budget

Other Area Airports

There are several public use airports that are within an hour drive of Salinas Municipal Airport (SNS). You might elect to use one of these airports in the event aircraft parking reaches capacity at SNS. Rental cars are also available at many of these airports.



[MONTEREY REGIONAL AIRPORT \(MRY\)](#) is located 12 nautical miles southwest of Salinas Municipal Airport and is approximately a 30 minute drive to Salinas.

Monterey Regional Airport has two hard surface runways. 10R/28L is 7616 X 150.

10L/28R is 3503 X 60. The airspace is Class C. Rental cars are available through

Enterprise, National, and Alamo at 866-315-9155. Avis, Budget, and Hertz are also available.



[MARINA MUNICIPAL AIRPORT \(OAR\)](#) is 7 nautical miles west of Salinas Municipal Airport is approximately a 20 minute drive to Salinas. Marina Municipal Airport has one hard surface runway. 11/29 is 3483 X 75. The airspace is Class E/G and underlies Monterey Regional Airport Class C airspace. Call the airport directly for information on rental car availability. 831-582-0102.



[WATSONVILLE MUNICIPAL AIRPORT \(WVI\)](#) is 18 nautical miles northwest of Salinas Municipal Airport and is approximately a 30 minute drive to Salinas. Watsonville Municipal Airport has two hard surface runways. 02/20 is 4501 X 149. 09/27 is 3998 X 98. The airspace is Class E/G. Rental cars are available through Enterprise at 866-315-9155. Hertz is also available.



[HOLLISTER MUNICIPAL AIRPORT \(CVH\)](#) is 17 nautical miles northeast of Salinas Municipal Airport and is approximately a 40 minute drive to Salinas. Hollister Municipal Airport has two hard surface runways. 06/24 is 3150 X 100. 13/31 is 6350 X 100. The airspace is Class E/G. Rental cars are available through Enterprise at 866-315-9155. Hertz is also available.

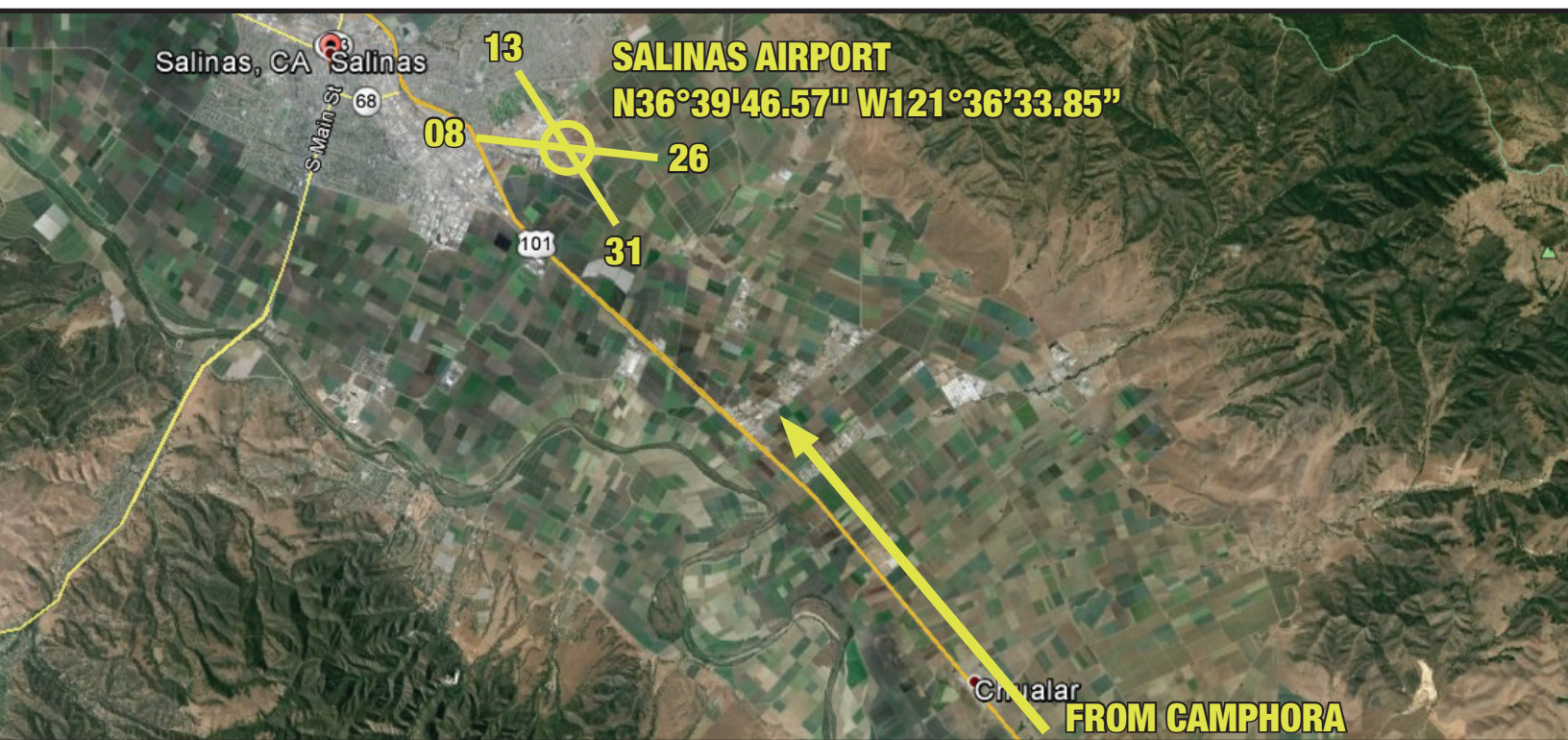


[SOUTH COUNTY AIRPORT OF SANTA CLARA COUNTY \(E16\)](#) is 25 nautical miles north of Salinas Municipal Airport and is approximately a 40 minute drive to Salinas. South County Airport of Santa Clara County has one hard surface runway. 14/32 is 3100 X 75. The airspace is Class E/G. Rental cars are available through Enterprise at 866-315-9155.

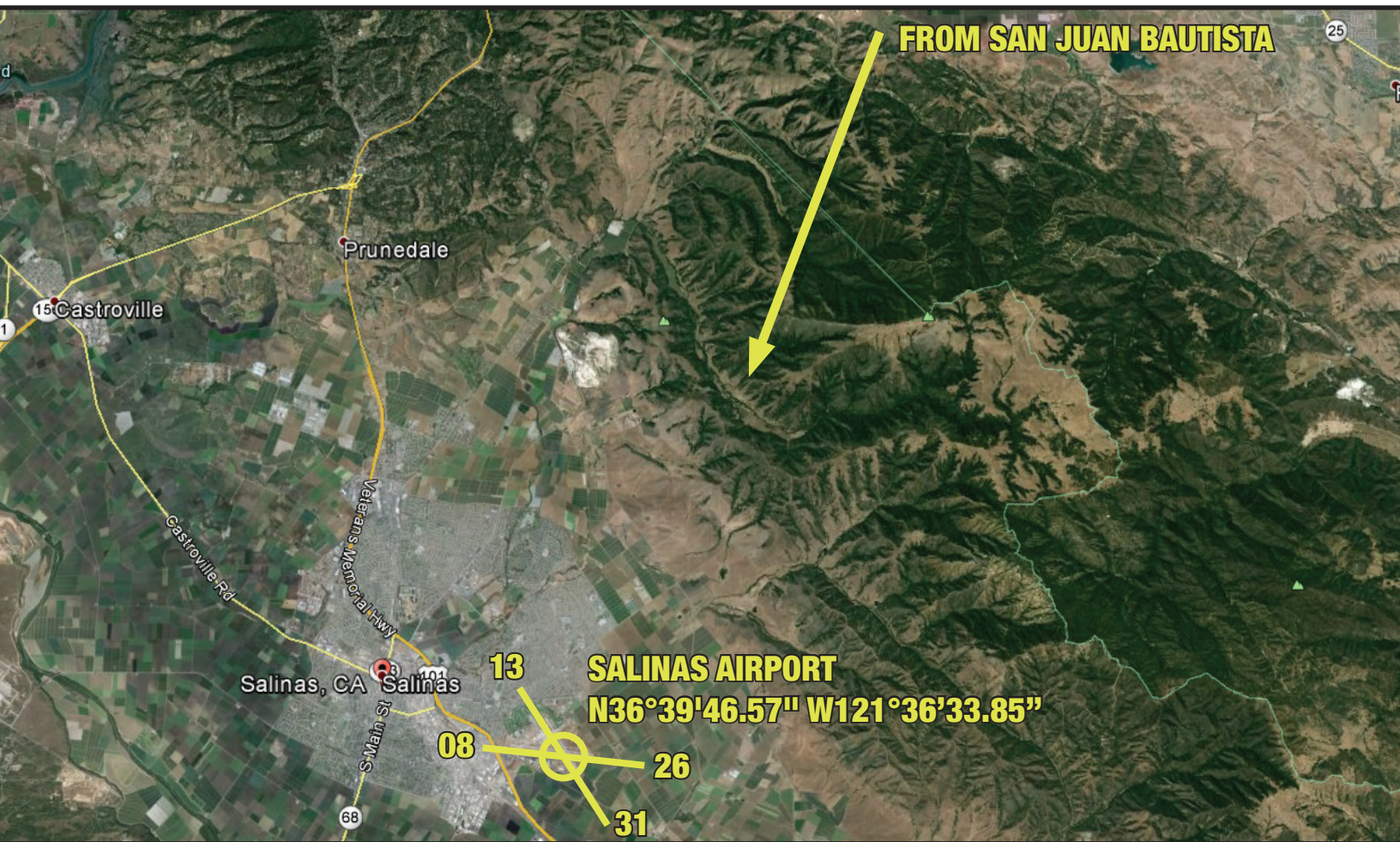


[MESA DEL REY AIRPORT \(KIC\)](#) is 35 nautical miles southeast of Salinas Municipal Airport and is approximately a 45 minute drive to Salinas. Mesa Del Rey Airport has one hard surface runway. 11/29 is 4479 X 100. The airspace is Class E/G. Rental cars are available through Enterprise at 866-315-9155.

ARRIVING AT SALINAS: SOUTH - FROM CAMPHORA



ARRIVING AT SALINAS: NORTH - FROM SAN JUAN BAUTISTA



SALINAS MUNICIPAL AIRPORT (SNS)

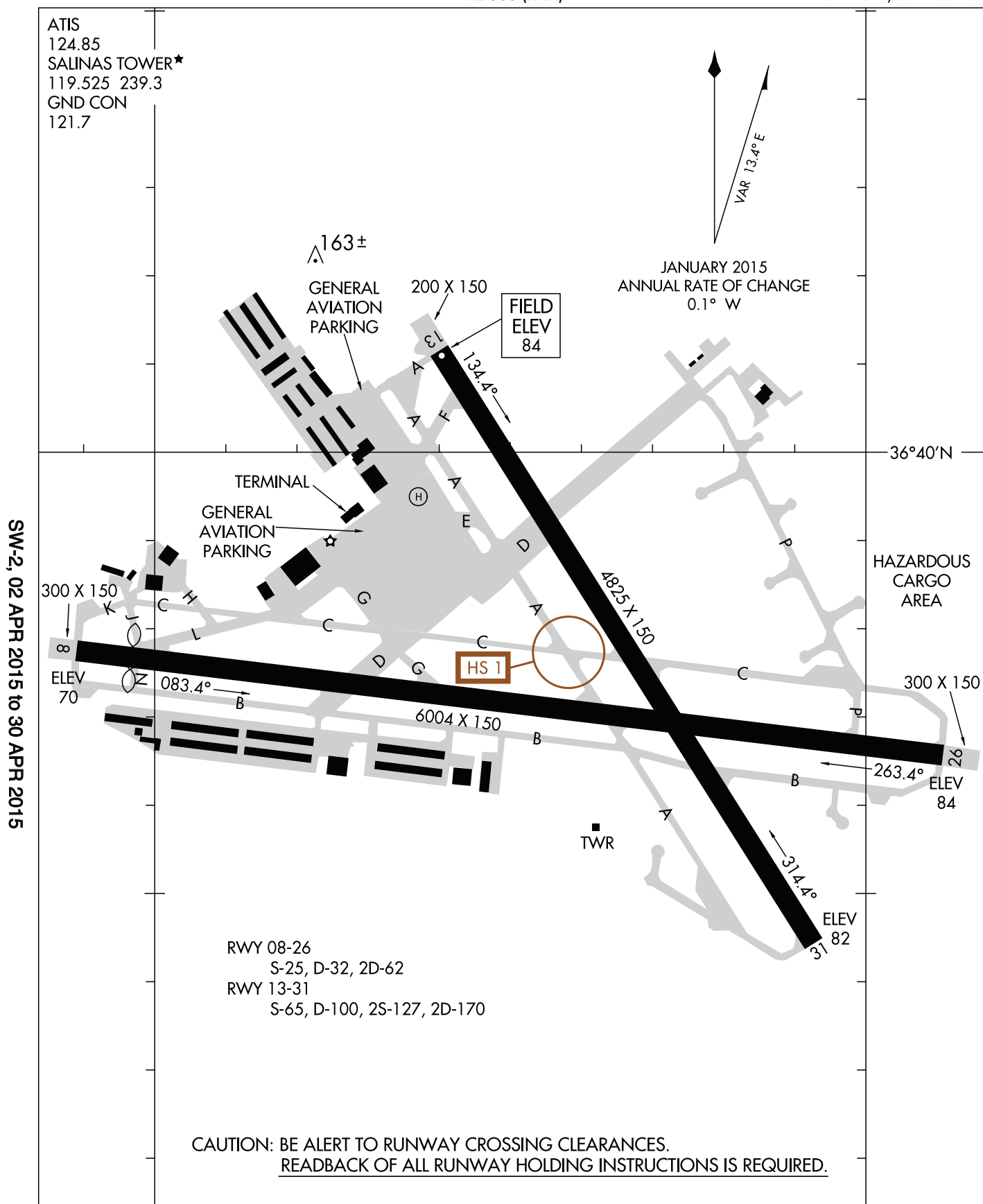
15064

AIRPORT DIAGRAM

AL-363 (FAA)

SALINAS MUNI (SNS)

SALINAS, CALIFORNIA



HOLLISTER MUNICIPAL AIRPORT (CVH)



HOLLISTER MUNICIPAL AIRPORT FREQUENCIES

ASOS	120.425	TEL: 831.636.4394	CTAF	123.0
UNICOM	123.0		APPROACH/DEPARTURE	124.525

MARINA MUNICIPAL AIRPORT (OAR)



MARINA MUNICIPAL AIRPORT FREQUENCIES

ASOS	134.025	TEL: 831.384.2967	CTAF	122.7
UNICOM	122.7		APPROACH/DEPARTURE	133.0

MESA DEL REY AIRPORT (KIC)



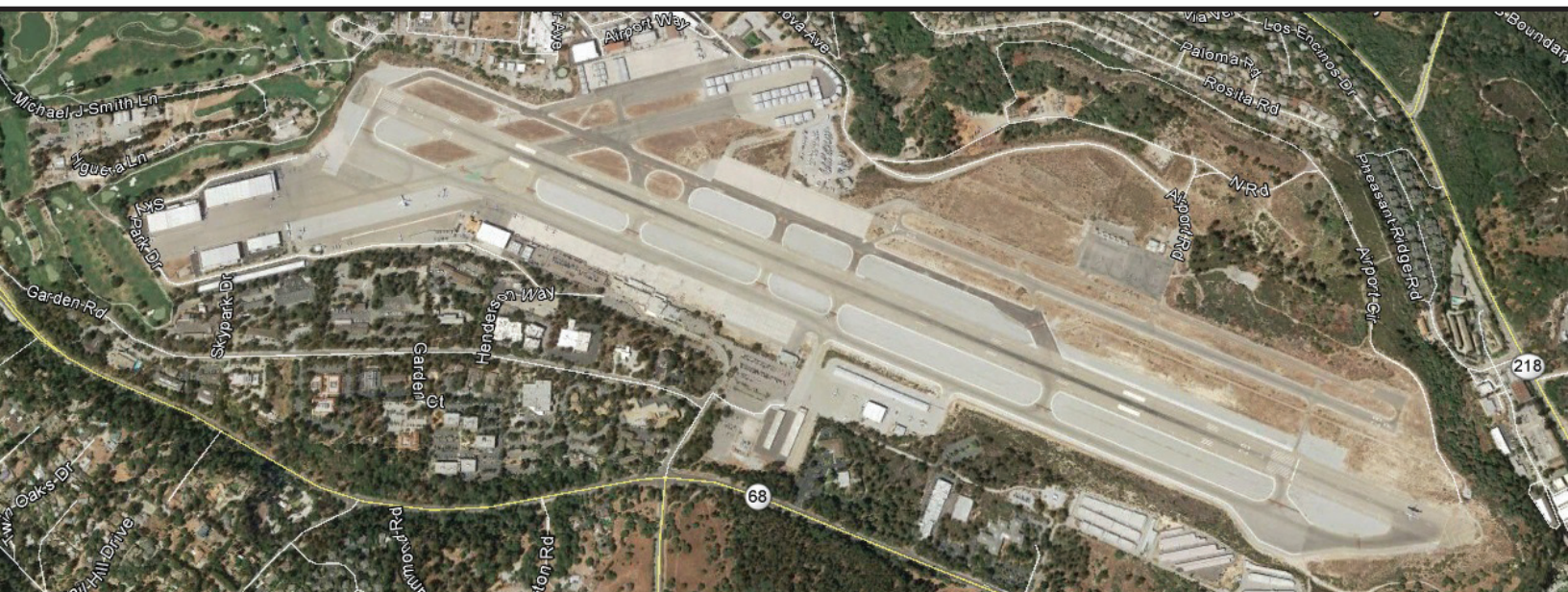
MESA DEL REY AIRPORT FREQUENCIES

AWOS (@09CA)

120.0 TEL: 831.386.7456

CTAF 122.9

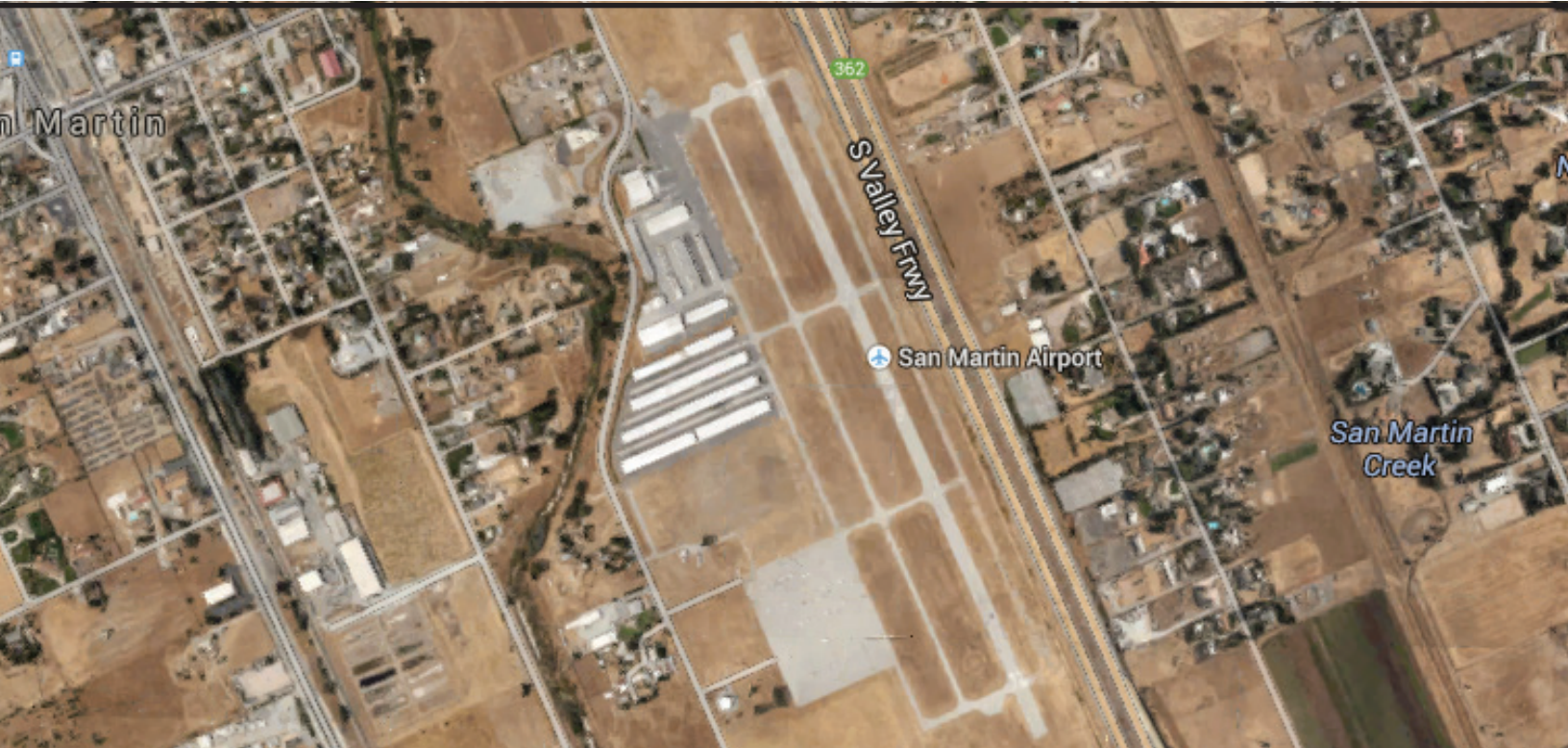
MONTEREY REGIONAL AIRPORT (MRY)



MONTEREY REGIONAL AIRPORT FREQUENCIES

ATIS	119.25 TEL: 831.642.0241	UNICOM	122.950
NORCAL APPROACH	127.15/133.0	CTAF	118.4
TOWER	118.4	CLEARANCE DELIVERY	135.45
GROUND	120.875	NORCAL DEPARTURE	127.15/133.0

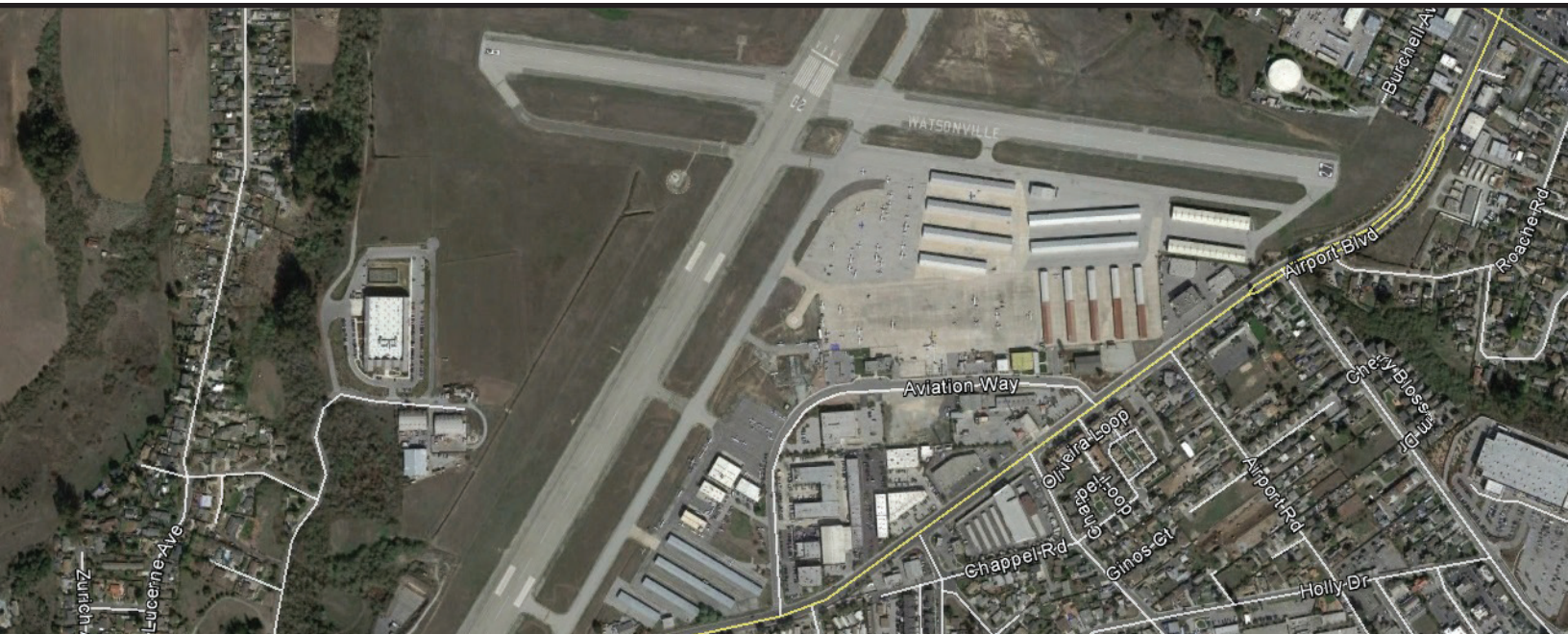
SOUTH COUNTY AIRPORT OF SANTA CLARA (E16)



SOUTH COUNTY AIRPORT OF SANTA CLARA FREQUENCIES

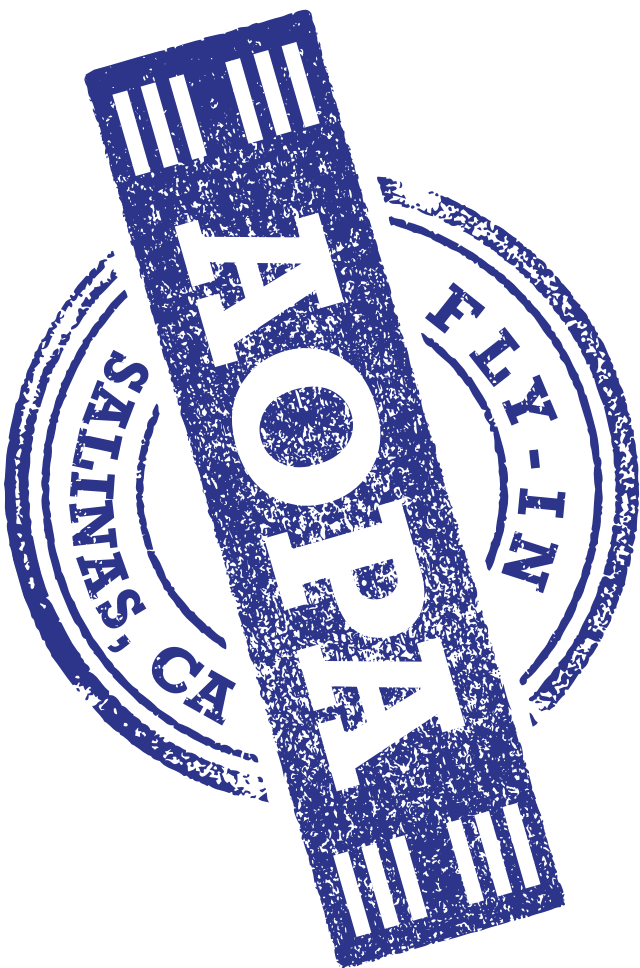
ASOS	118.355	TEL: 408.918.7724	CTAF	122.7
UNICOM	122.7		APPROACH/DEPARTURE	120.1

WATSONVILLE MUNICIPAL AIRPORT (WVI)



WATSONVILLE MUNICIPAL AIRPORT FREQUENCIES

ASOS	132.275	TEL: 831.724.8794	CTAF	122.8
UNICOM	122.8		APPROACH/DEPARTURE	127.15

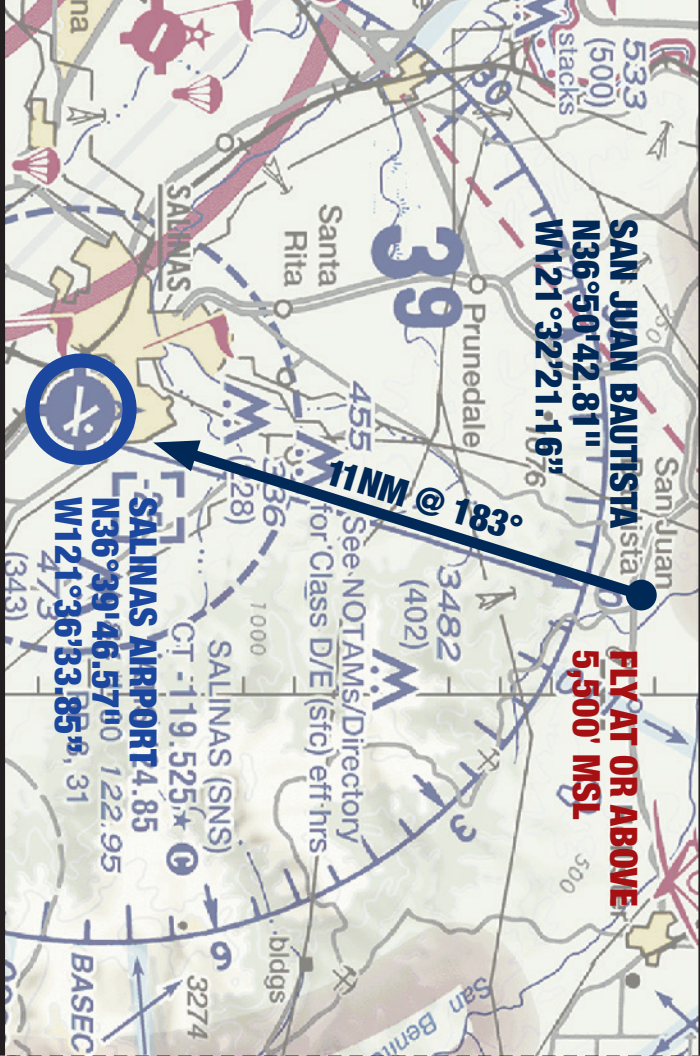


AOPA FLY-IN

PRINT AND PLACE IN AIRCRAFT WINDSHIELD

**VFR PROCEDURES: NORTH - ARRIVAL OVER
SAN JUAN BAUTISTA & HOLD**

NORCAL APPROACH: 133.0 SALINAS TOWER: 119.525



**VFR PROCEDURES: NORTH - ARRIVALS
OVER SAN JUAN BAUTISTA**

ATIS: 124.85 SALINAS GROUND: 121.7

Check ATIS on 124.85 as soon as practical.

Begin over San Juan Bautista at or above 5,500 feet MSL

Do not proceed beyond San Juan Bautista before communicating with NorCal approach 133.0 or Salinas Tower 119.525

Stay alert for other traffic

Follow San Juan Bautista holding procedure if necessary (see graphic)

Descend to TPA at pilot's discretion when enroute to Salinas Airport

TPA: Light Aircraft 883 feet MSL; Turbine Aircraft 1509 feet MSL

Expect frequency transfer from NorCal Approach to Salinas Tower approximately 7 NM from airport

Follow instructions from Salinas Tower
After landing, exit the runway as safely and expeditiously as possible

Follow taxi instructions and directional signs to parking

Marshallsers will direct aircraft to parking spaces



VFR PROCEDURES: SOUTH - ARRIVAL OVER CAMPHORA

ATIS: 124.85 **SALINAS GROUND: 121.7**



TPA: Light Aircraft 883 feet MSL;
Turbine Aircraft 1509 feet MSL

Expect frequency transfer from NorCal Approach to Salinas Tower

Follow instructions from Salinas Tower
After landing, exit the runway as safely

After landing, exit the runway as safely and expeditiously as possible

Follow taxi instructions and directional signs to parking

Marshallers will direct aircraft to parking spaces