



FLY-IN

OCTOBER 26-27, 2018

**JACK EDWARDS NATIONAL AIRPORT (JKA)
GULF SHORES, AL**



PILOT INFORMATION PACKET

SPECIAL FLIGHT PROCEDURES

EFFECTIVE:

Thursday	Oct 25, 2018	12:00 NOON	CDT	until	6:00 PM	CDT
Friday	Oct 26, 2018	7:00 AM	CDT	until	6:00 PM	CDT
Saturday	Oct 27, 2018	7:00 AM	CDT	until	6:00 PM	CDT



Jack Edwards
NATIONAL AIRPORT
Gulf Shores, Al

IMPORTANT INFORMATION



PLEASE NOTE NOTAM EFFECTIVE TIMES

12:00 Noon CDT until 6:00 PM CDT Thursday, October 25, 2018

7:00 AM CDT until 6:00 PM CDT Friday, October 26, 2018

7:00 AM CDT until 6:00 PM CDT Saturday, October 27, 2018

AIRPORT CLOSED DURING THE FOLLOWING TIMES

6:00 PM CDT Thursday, October 25, 2018 until 7:00 AM CDT Friday, October 26, 2018

6:00 PM CDT Friday, October 26, 2018 until 7:00 AM CDT Saturday, October 27, 2018

A **Prior Permission Required (PPR)** number is required to land during those times. To obtain a PPR number, please call 678-549-5010.

Note: Advisory service will only be available during the NOTAM effective times. Follow standard nontowered airport procedures and announce intentions on Jack Edwards UNICOM **122.7** when NOTAM is not in effect.

CHOCKS AND/OR TIE DOWNS ARE REQUIRED AND NOT PROVIDED. PLEASE BRING YOUR OWN.

EARLY ARRIVALS (PRIOR TO THURSDAY, OCTOBER 25, 2018 - 12:00 NOON CDT) WILL NOT BE ACCOMMODATED IN THE AOPA ATTENDEE PARKING

- Camping will **NOT** be permitted prior to Thursday, October 25, 2018
- Aircraft parking will be at designated transient spaces managed by the FBOs
- Overnight fees will apply

AIRCRAFT CAMPING

- All campers must pre-pay and pre-register. Camping availability not assured without reservation.
- Please bring your own food and water. Food is **NOT** provided on the airfield.
- Ground transportation is **NOT** provided to get to locations offsite. Taxi or rental car reservations must be made on your own.
- Food, Water, Sunscreen, and Rain gear is highly recommended.
- Restroom and shower facilities are “primitive”. Portable toilets and handwashing stations will be provided. Limited shower facilities might be available but not assured. No guarantee on hot water. Please come prepared!
- Aircraft camping is open from 12:00 Noon CDT Thursday, October 25, 2018 until 12:00 Noon CDT Sunday, October 28, 2018.

TABLE OF CONTENTS

NOTAM—TEMPORARY VFR PROCEDURES 1-17

VFR Arrivals Overview.....1
 Temporary VFR Procedures.....1
 Jack Edwards Airport Advisory service.....1
VFR Procedures:
 Arrivals over Brewton Municipal Airport (12J)2
VFR Procedures:
 Arrivals over Bay Minette Municipal Airport (1R8).....3
 Graphic - Intersection of SR59 and I-10—satellite view.... 4
 Graphic - Approaching Intersection of SR59 and I-10 from NE—satellite view 4
 Graphic - Approaching Intersection of SR59 and I-10 from NW—satellite view5
 Graphic - SR59 Dog Leg Reporting Point—satellite view6
 Graphic - SR59 Dog Leg Reporting Point—satellite view6
 Graphic - Tanger Outlet Mall—5 NM from JKA—satellite view7
 Graphic - Approaching JKA from the North along SR597
 Graphic - Gulf Shores VFR Hold—sectional view.....8
 Graphic - Gulf Shores VFR Hold—satellite view8
 IFR Delays9
 Airport Closure9
 Helicopter Operations.....9
 Local Training and Practice Approaches.....9
 No Radio Aircraft9
 Student Pilots.....9
 Cautions.....9

FREQUENCIES & WAYPOINT INFORMATION .. 10-11

Enroute frequencies.....10
 Jack Edwards National Airport Frequencies10
 Specific Latitude/Longitude Coordinates11
 Degrees, Minutes, Seconds converted to Decimal Degrees.....11

GENERAL INFORMATION: JACK EDWARDS NATIONAL AIRPORT 12

Graphic - Jack Edward National Airport.....12
 Non-movement Areas.....12
 Parking Areas12
 Vehicular Traffic.....12
 Preflight Planning12

DEPARTURE PROCEDURES: JACK EDWARDS NATIONAL AIRPORT 13-20

IFR Departures.....13

VFR DEPARTURES 13

VFR Flight Following.....13
 Prior to Start-up13
 Engine Start13
 Run-up.....13
 Taxi.....13
 Departure13
 Departing Runway 913
 Additional Eastbound Coastal Route—
SATURDAY ONLY13

Departing Runway 27.....13
 Additional Eastbound Coastal Route—
SATURDAY ONLY13
 Special Air Traffic Rule, FAR Part 93 Eglin/Valparaiso Terminal Area.....13
 Graphic - Departing Runway 9.....14
 Graphic - Departing Runway 2714
 Graphic - Additional East Bound Coastal Route—
SATURDAY ONLY15
 Graphic - Navarre Bridge—satellite view.....16
 Graphic - Navarre Bridge—satellite view.....16
 Graphic - Brewton Municipal Airport—satellite view with frequencies17
 Graphic - Bay Minette Municipal Airport—satellite view with frequencies.....17
 Graphic - Foley Municipal Airport—satellite view with frequencies.....18
 Graphic - Jack Edwards National Airport Diagram.....19
 Graphic - Eglin/Valparaiso Terminal Area.....20

KNEEBOARD QUICK REFERENCE GRAPHICS 21-22

VFR Procedures:
 Arrivals over Brewton Municipal Airport (12J)21
VFR Procedures:
 Arrivals over Bay Minette Municipal Airport (1R8).....22

ADDITIONAL INFORMATION 23-26

Host FBO information.....23
 Gulf Air Center23
 Platinum Air Center.....23
 Salt Air Aviation Center.....23
 Parking and Service Details24
 Chocks and Tie Downs.....24
 Camping24
 After-hours departure.....24
 Rental car availability24

OTHER AREA AIRPORTS 25

Foley Municipal Airport (5R4).....25
 H L Sonny Callahan Airport (CQF).....25
 Pensacola International Airport (PNS).....25
 Mobile Downtown Airport (BFM).....25

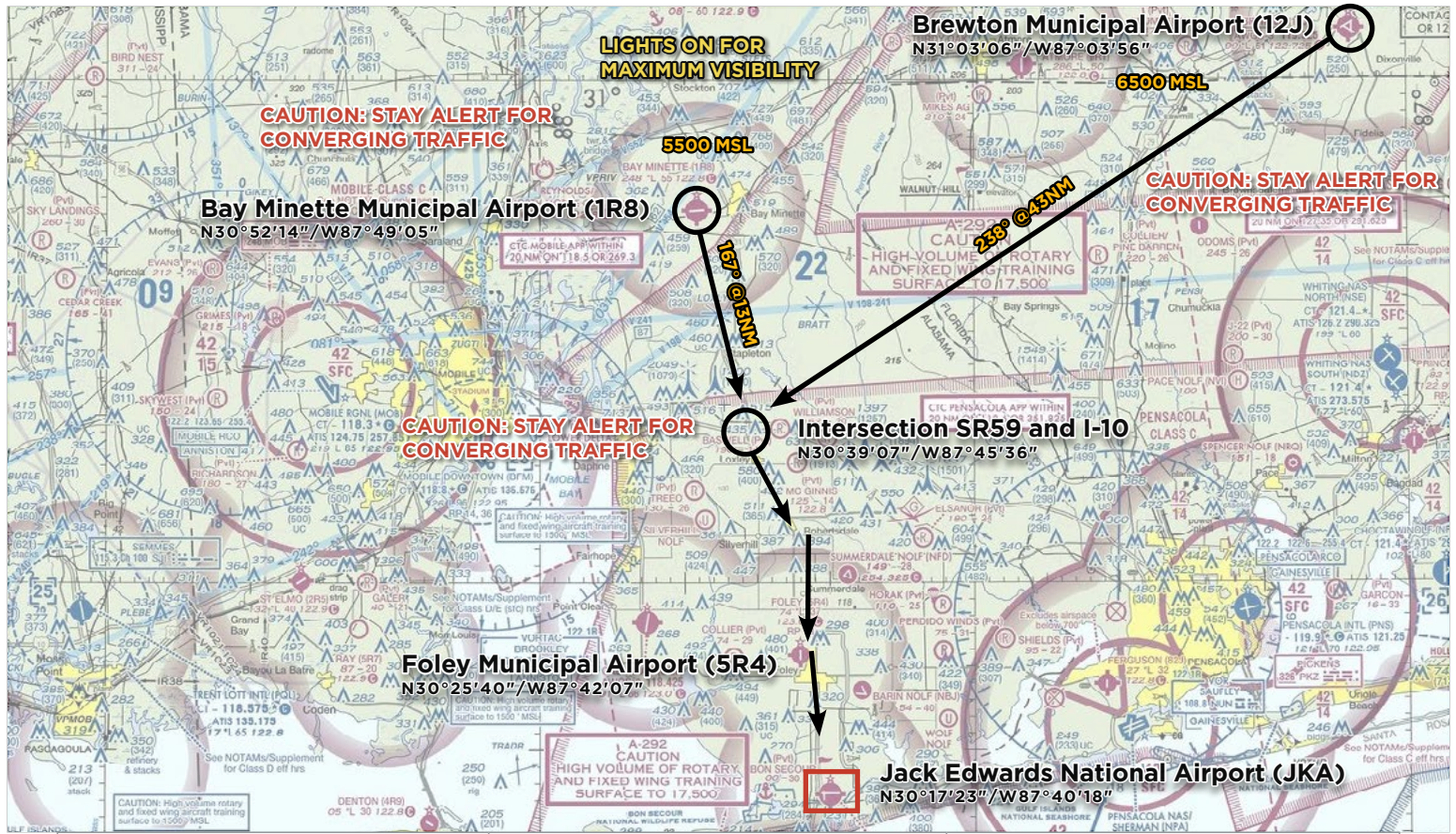
ADDITIONAL GRAPHICS.....25-27

H L Sonny Callahan Airport (CQF)—satellite view with frequencies.....25
 Pensacola International Airport (PNS)—satellite view with frequencies.....25
 Mobile Downtown Airport (BFM)—satellite view with frequencies.....26
 Landing Runway 9 at Jack Edwards National Airport—satellite view27
 Landing Runway 27 Jack Edwards National Airport—satellite view27

AOPA GULF SHORES FLY-IN WINDSHIELD GRAPHIC—PRINTABLE..... 28

IFR WINDSHIELD GRAPHIC—PRINTABLE..... 29

VFR ARRIVALS OVERVIEW



Jack Edwards AWOS 134.525	Jack Edwards Advisory 119.420	Jack Edwards UNICOM 122.7
---------------------------	-------------------------------	---------------------------

TEMPORARY VFR PROCEDURES

Specific procedures contained within this NOTAM may be revised at the time of the event. Pilots are urged to review all applicable NOTAMS and arrival/departure procedures prior to conducting a flight to Jack Edwards National Airport. Users are encouraged to check NOTAMS frequently to verify they possess the most current revisions. This NOTAM does not supersede restrictions pertaining to the use of airspace contained in FDC NOTAMS.

ALL VFR ARRIVALS SHOULD BEGIN AT:

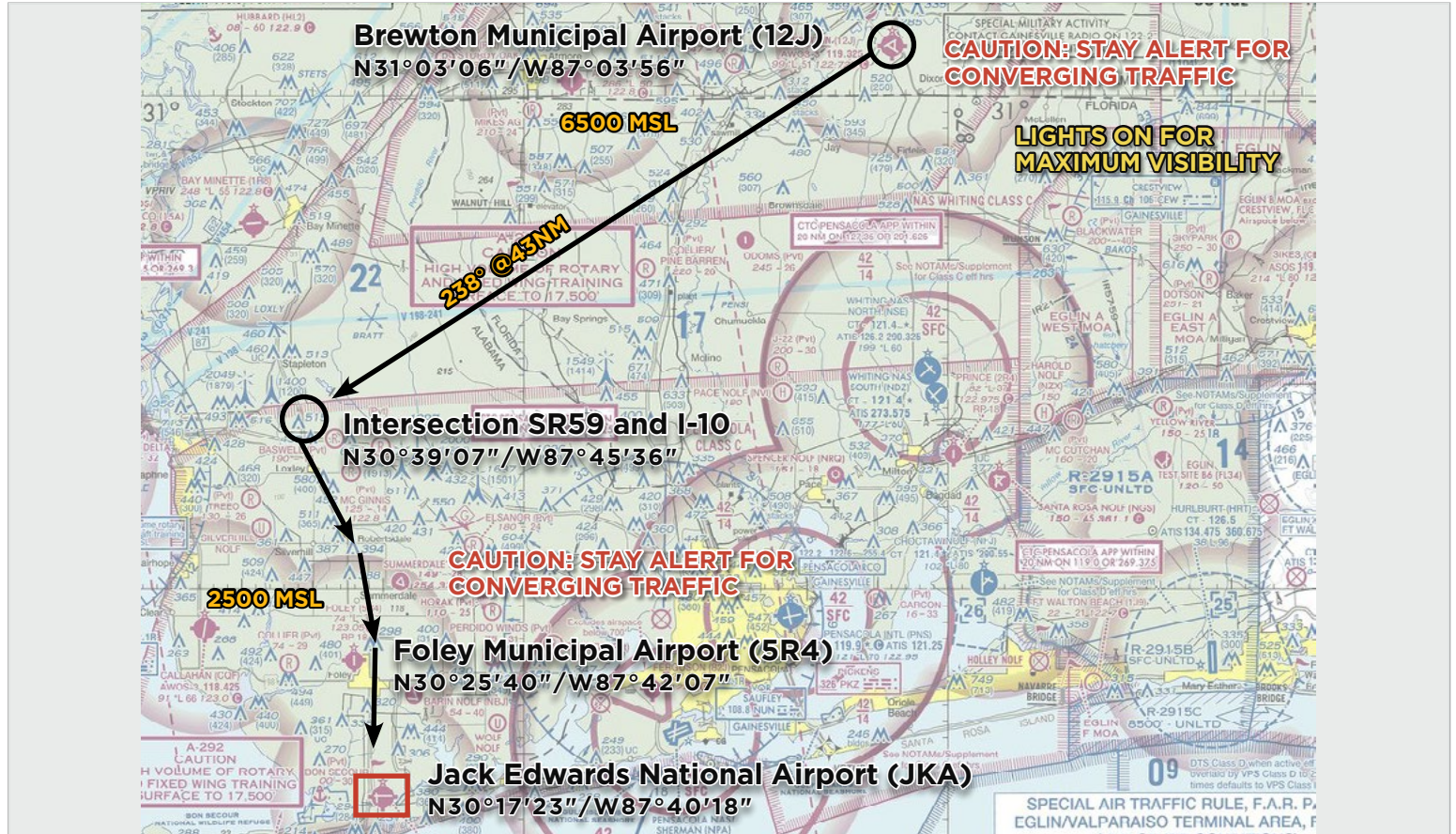
- Brewton Municipal Airport (12J)**, 55 NM northeast of Jack Edwards National Airport (JKA), or
- Bay Minette Municipal Airport (1R8)**, 36 NM northwest of Jack Edwards National Airport (JKA).

JACK EDWARDS AIRPORT ADVISORY

AirBoss (non-Federal) personnel will provide Airport ADVISORY service on **119.420** to aircraft operating to and from Jack Edwards National Airport during the procedures NOTAM effective times. Outside NOTAM times, or if unable to contact Advisory, contact Jack Edwards UNICOM on **122.7** and follow standard non-towered airport procedures.

NOTE: Advisory service does NOT constitute Air Traffic Control (ATC) Service, or ATC Clearance.

VFR PROCEDURES - Arrivals over Brewton Municipal Airport (12J)



Jack Edwards AWOS 134.525	Jack Edwards Advisory 119.420	Jack Edwards UNICOM 122.7
---------------------------	-------------------------------	---------------------------

✓ CHECK AWOS ON 134.525 AS SOON AS PRACTICAL.

This procedure begins over Brewton Municipal Airport (12J) at **6500** feet MSL. If unable to maintain **6500** feet MSL due to weather, aircraft should fly at or below **2500** feet MSL, if possible, to avoid military traffic at other altitudes. From Brewton Municipal Airport fly direct to the intersection of SR59 and Interstate 10. Approximate heading of **238° @ 43NM**. **MONITOR ONLY** Pensacola Approach on **118.0**. (See graphics pages 4-5.)

⚠ CAUTION: Stay alert for converging aircraft. Turn on all lights if practical for maximum visibility.

Maintain **6500** feet MSL, if able, until south of V 198-241 (263° radial from the Crestview (CEW) VORTAC 115.9.) Descend to **4500** feet MSL prior to reaching the intersection of SR59 and Interstate 10. If at or below **2500** feet MSL due to weather, maintain that altitude until beginning descent to pattern altitude.

⚠ CAUTION: Stay alert for aircraft arriving from the Northwest/ Bay Minette Municipal Airport (1R8) at 4500 feet MSL.

From the intersection of SR59 and Interstate 10, follow SR59 south toward Gulf Shores and Jack Edwards National Airport. Begin descent to **2500** feet MSL at pilot's discretion.

Approximately 10 NM south of the intersection near the town of Summerdale, SR59 turns briefly southeast before turning south again. This "Dog Leg" in the road is the initial reporting point and is approximately 10 NM from Jack Edwards National Airport. Contact

Jack Edwards Advisory on **119.420** and report when over the "Dog Leg". (See graphics page 6.)

Continue inbound and follow instructions from Jack Edwards Advisory. Approximately 5 NM from Jack Edwards National Airport, there will be a blue roofed school (Foley High School) on the right side of SR59 and Tanger Outlet Mall on the left side of SR59.

Continue inbound and follow instructions from Jack Edwards Advisory. If traffic volume requires holding, expect to fly the hold procedure as depicted in the **GULF SHORES VFR HOLD GRAPHIC**. All aircraft should fly right turns at **2500** feet MSL. (See graphics page 8.)

⚠ CAUTION: Stay alert for converging aircraft.

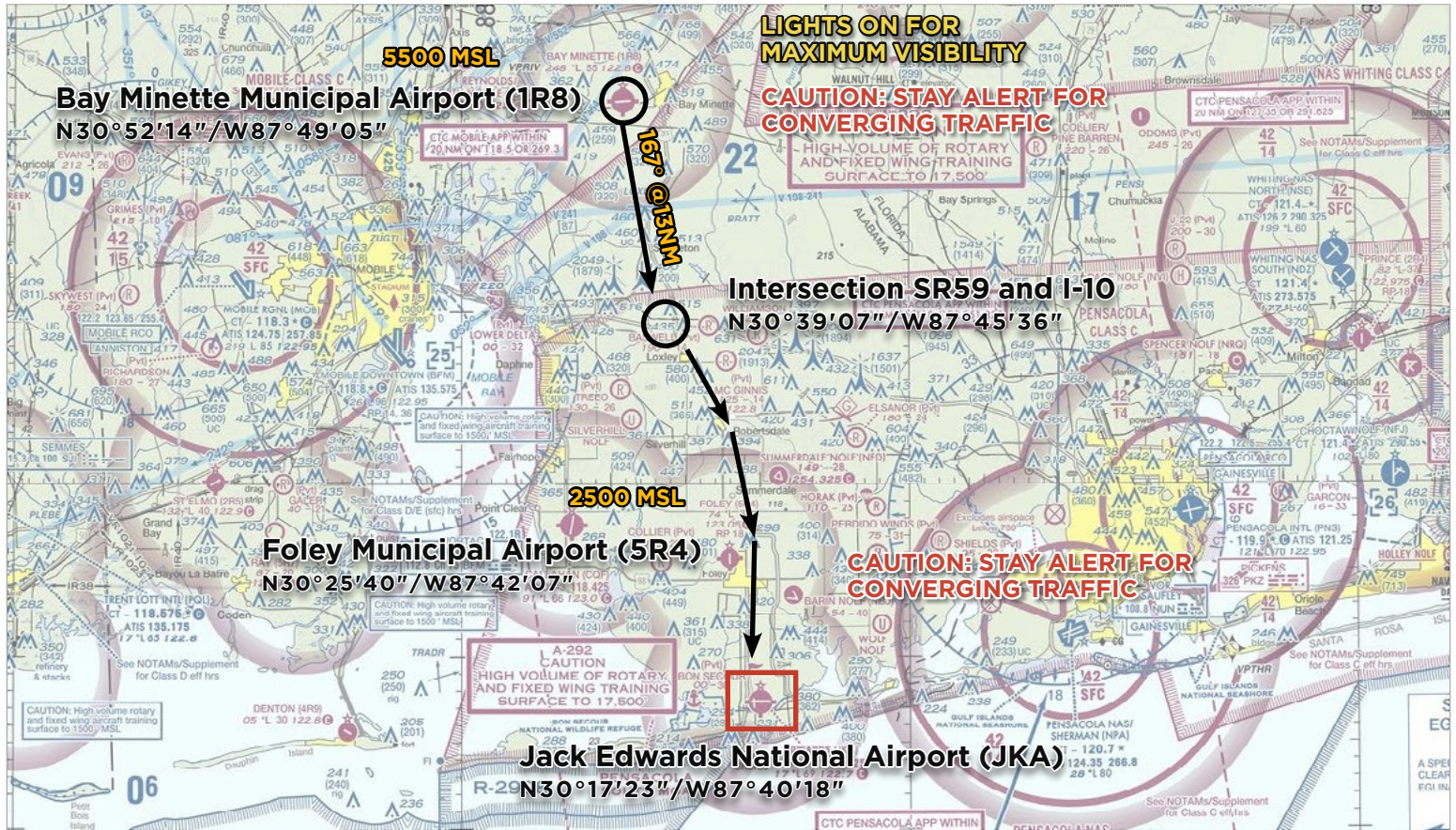
When Jack Edwards Advisory announces that holding is no longer required, aircraft should proceed inbound after completing the hold and arriving back over SR59 just south of Foley Municipal Airport.

Follow landing instructions from Jack Edwards Advisory on **119.420**.

JKA TPA: 1000 feet MSL

After landing, do not stop on the runway unless necessary. Exit the runway as quickly and as safely as possible at the first available taxiway. Keep moving and follow instructions from Jack Edwards Advisory on **119.420**. Marshalls will direct aircraft to the parking areas.

VFR PROCEDURES - Arrivals over Bay Minette Municipal Airport (1R8)



Jack Edwards AWOS 134.525	Jack Edwards Advisory 119.420	Jack Edwards UNICOM 122.7
---------------------------	-------------------------------	---------------------------

✓ **CHECK AWOS ON 134.525 AS SOON AS PRACTICAL.**

This procedure begins over Bay Minette Municipal Airport (1R8) at **5500** feet MSL. If unable to maintain **5500** feet MSL due to weather, aircraft should fly at or below **2500** feet MSL, if possible, to avoid military traffic at other altitudes. **MONITOR ONLY** Pensacola Approach on **118.0**.

From Bay Minette Municipal Airport fly direct to the intersection of SR59 and Interstate 10 (approximate heading of **167°** @ 13NM) or follow SR59 south from the town of Bay Minette. Descend to **4500** feet MSL prior to reaching the intersection of SR59 and Interstate 10. (See graphics pages 4-5.) If at or below **2500** feet MSL due to weather, maintain that altitude until beginning descent to pattern altitude.

⚠ **CAUTION: Stay alert for converging aircraft. Turn on all lights if practical for maximum visibility.**

⚠ **CAUTION: Aircraft will be arriving at the same altitude from the northeast at the intersection of SR59 and Interstate 10.**

From the intersection of SR59 and Interstate 10, follow SR59 south toward Gulf Shores and Jack Edwards National Airport. Begin descent to **2500** feet MSL at pilot's discretion.

Approximately 10 NM south of the intersection near the town of Summerdale, SR59 turns briefly southeast before turning south again. This "Dog Leg" in the road is the initial reporting point and is approximately 10 NM from Jack Edwards National Airport. Contact

Jack Edwards Advisory on **119.420** and report when over the "Dog Leg". (See graphics page 6.)

Continue inbound and follow instructions from Jack Edwards Advisory. Approximately 5 NM from Jack Edwards National Airport, there will be a blue roofed school (Foley High School) on the right side of SR59 and Tanger Outlet Mall on the left side of SR59.

Continue inbound and follow instructions from Jack Edwards Advisory. If traffic volume requires holding, expect to fly the hold procedure as depicted in the **GULF SHORES VFR HOLD GRAPHIC**. All aircraft should fly right turns at **2500** feet MSL. (See graphics page 8.)

⚠ **CAUTION: Stay alert for converging aircraft. Turn on all lights if practical for maximum visibility.**

When Jack Edwards Advisory announces that holding is no longer required, aircraft should proceed inbound after completing the hold and arriving back over SR59 just south of Foley Municipal Airport.

Follow landing instructions from Jack Edwards Advisory on **119.420**.

JKA TPA: 1000 feet MSL

After landing, do not stop on the runway unless necessary. Exit the runway as quickly and as safely as possible at the first available taxiway. Keep moving and follow instructions from Jack Edwards Advisory on **119.420**. Marshalls will direct aircraft to the parking areas.

VFR PROCEDURES - Intersection of SR59 and I-10 – Overhead view



VFR PROCEDURES - Approaching Intersection of SR59 and I-10 from NE



VFR PROCEDURES - Approaching Intersection of SR59 and I-10 from NW

Jack Edwards National Airport (JKA)
N30°17'23"/W87°40'18"

Loxley
N30°37'03"/W87°45'09"

Intersection SR59 and I-10
N30°39'07"/W87°45'36"

From Brewton Municipal Airport (12J)

From Bay Minette Municipal Airport (1R8)

Jack Edwards AWOS 134.525	Jack Edwards Advisory 119.420	Jack Edwards UNICOM 122.7
---------------------------	-------------------------------	---------------------------

VFR PROCEDURES - Arrivals Overview

LIGHTS ON FOR MAXIMUM VISIBILITY

CAUTION: STAY ALERT FOR CONVERGING TRAFFIC

2500 MSL

Foley Municipal Airport (5R4)
N30°25'40"/W89°15'12"

CAUTION: High volume rotary and fixed wing aircraft training surface to 1500' MSL

A-292 CAUTION HIGH VOLUME OF ROTARY AND FIXED WING TRAINING SURFACE TO 17,500'

Jack Edwards National Airport (JKA)
N30°17'23"/W87°40'18"

EDWARDS (JKA)
AWOS-3 134.525
17°L 69 122.7

CTC PENSACOLA APP WITHIN 20 NM ON 120.65 OR 270.8

PENSACOLA NAS CLASS C

Jack Edwards AWOS 134.525	Jack Edwards Advisory 119.420	Jack Edwards UNICOM 122.7
---------------------------	-------------------------------	---------------------------

VFR PROCEDURES - SR59 Dog Leg Reporting Point — 10 NM from JKA

Jack Edwards National Airport (JKA)
N30°17'23"/W87°40'18"

Foley Municipal Airport (5R4)
N30°25'40"/W87°42'07"

SR59 Dog Leg Reporting Point
N30°28'49"/W87°42'28"

**CONTACT JACK EDWARDS ADVISORY
ON 119.420 AND REPORT
DOG LEG INBOUND**

Summerdale
N30°29'19"/W87°41'59"

Jack Edwards AWOS 134.525	Jack Edwards Advisory 119.420	Jack Edwards UNICOM 122.7
---------------------------	-------------------------------	---------------------------

VFR PROCEDURES - SR59 Dog Leg Reporting Point — 10 NM from JKA

Jack Edwards National Airport (JKA)
N30°17'23"/W87°40'18"

Foley Municipal Airport (5R4)
N30°25'40"/W87°42'07"

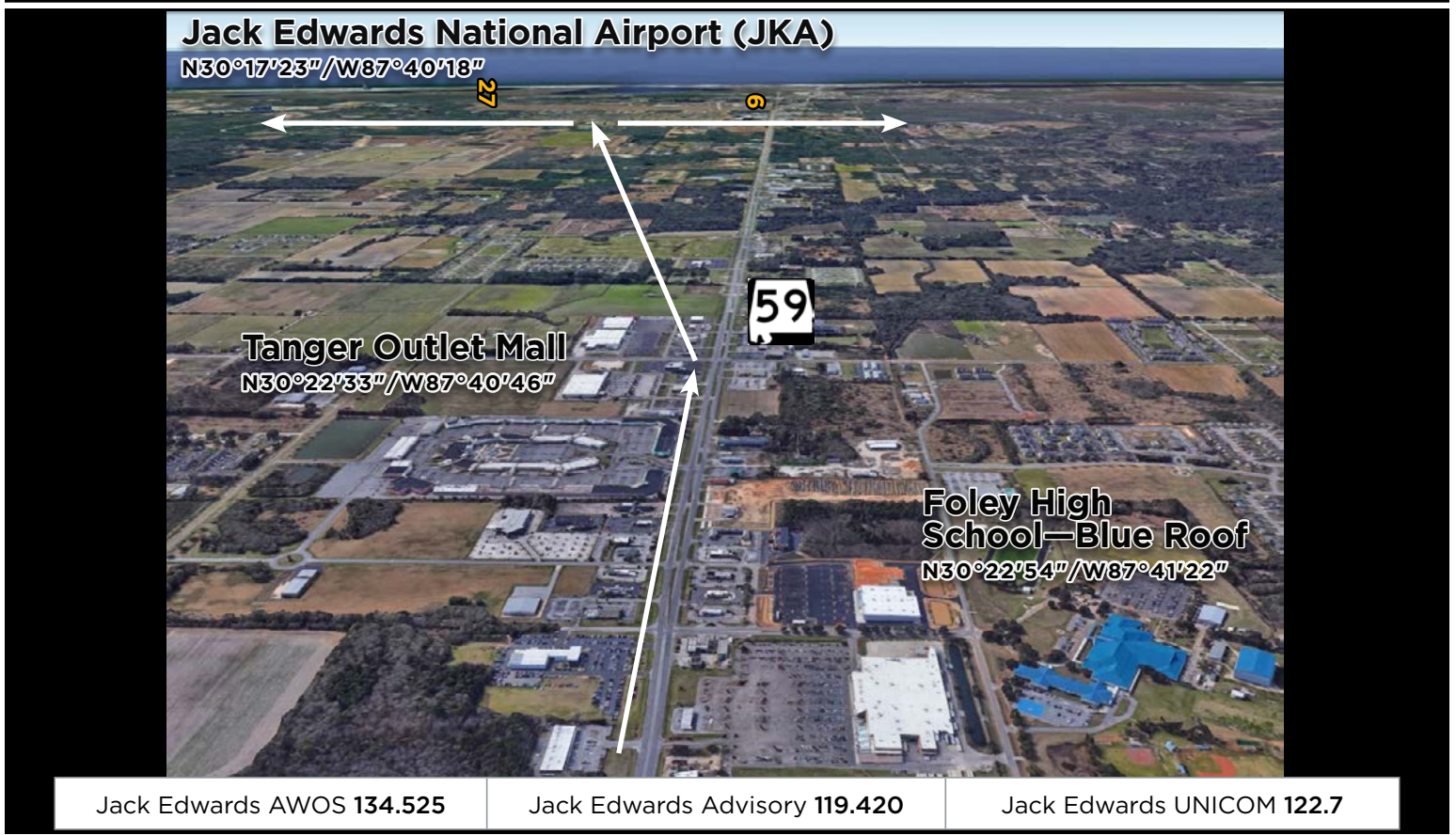
SR59 Dog Leg Reporting Point
N30°28'49"/W87°42'28"

**CONTACT JACK EDWARDS ADVISORY
ON 119.420 AND REPORT
DOG LEG INBOUND**

Summerdale
N30°29'19"/W87°41'59"

Jack Edwards AWOS 134.525	Jack Edwards Advisory 119.420	Jack Edwards UNICOM 122.7
---------------------------	-------------------------------	---------------------------

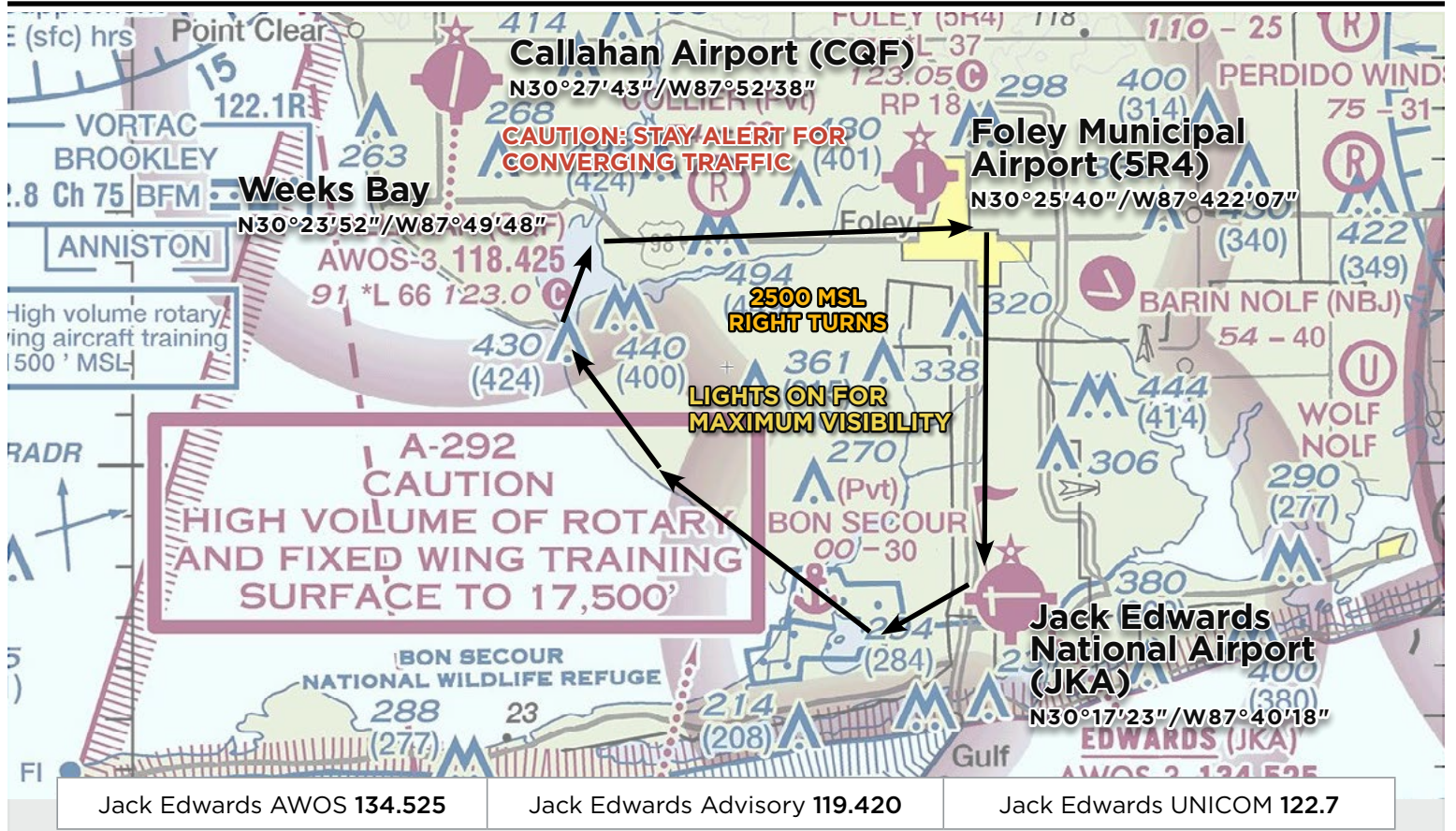
VFR PROCEDURES - Tanger Outlet Mall – 5 NM from JKA



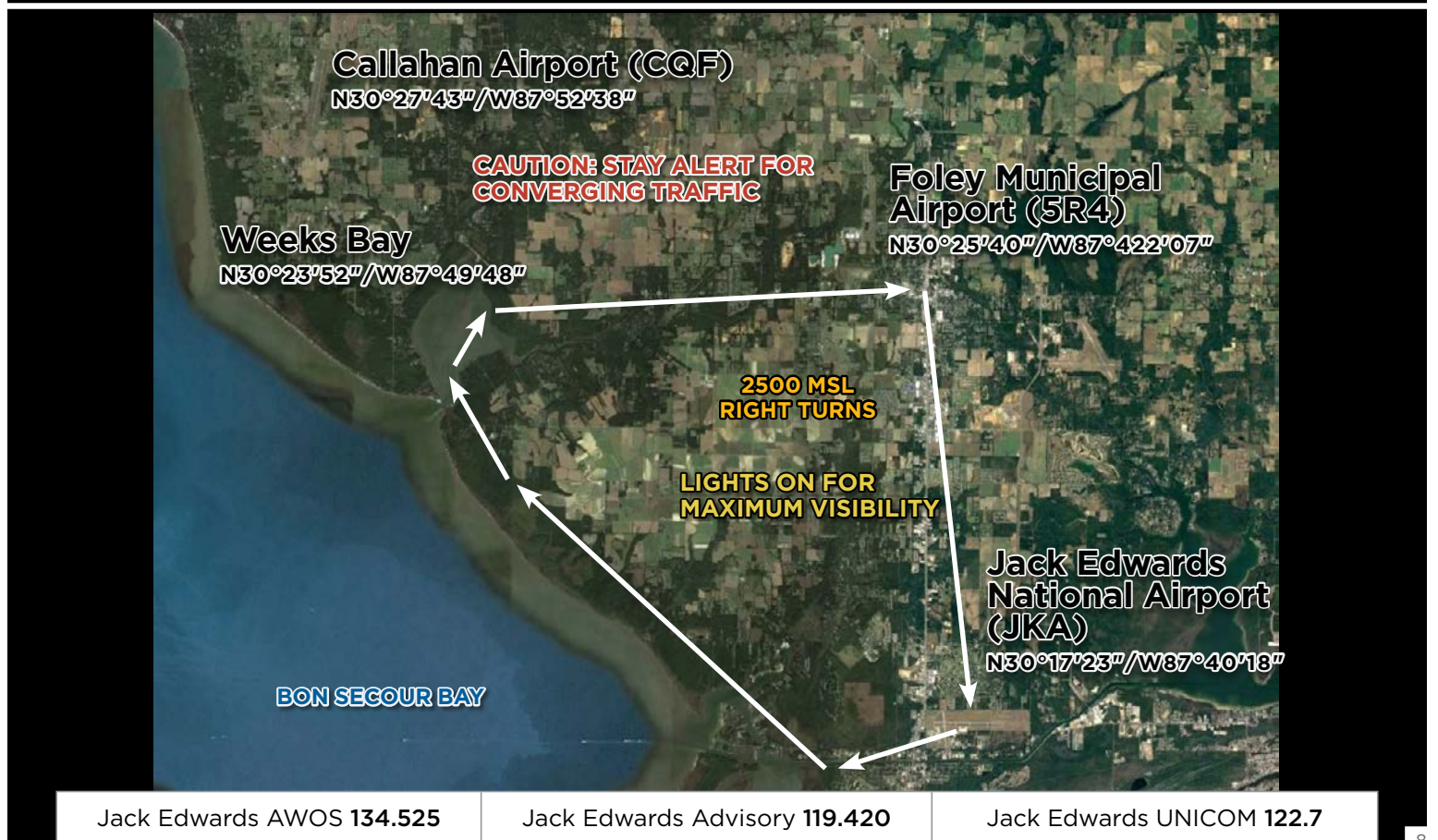
VFR PROCEDURES - Approaching JKA from the North along SR59



VFR PROCEDURES - Gulf Shores VFR Hold



VFR PROCEDURES - Gulf Shores VFR Hold



IFR DELAYS

There is no Special Traffic Management Program for this event. No arrival or departure reservations are required. IFR separation requirements may cause delays when arrival rates exceed airport capacity. Pilots on an IFR flight plan should be prepared for potential holding. IFR flight plans to Jack Edwards National Airport should be filed **at least 2 hours** prior to proposed departure time.

VFR flight on designated arrival routes is highly recommended if practical.

AIRPORT CLOSURE

Jack Edwards National Airport will be closed during the following times during the AOPA Fly-In.

**6:00 PM CDT Thursday, October 25, 2018 until
7:00 AM CDT Friday, October 26, 2018**

**6:00 PM CDT Friday, October 26, 2018 until
7:00 AM CDT Saturday, October 27, 2018**

A **Prior Permission Required (PPR)** number is required to land during those times. To obtain a PPR number, please call 678-549-5010.

Note: Advisory service will only be available during the NOTAM effective times. Follow standard non-towered airport procedures and announce intentions on Jack Edwards UNICOM **122.7** when NOTAM is not in effect.

HELICOPTER OPERATIONS

Helicopters are not expected to fly the special VFR Arrival Procedures. When inbound, contact Jack Edwards Advisory on **119.420** as soon as practical for specific instructions.

LOCAL TRAINING AND PRACTICE APPROACHES

Local traffic pattern, closed traffic training, and practice instrument approaches **will not** be available at Jack Edwards National Airport (JKA) during the AOPA Fly-In.

NO RADIO AIRCRAFT

Due to high density traffic, aircraft operations without a radio are not recommended.

STUDENT PILOTS

Due to high density traffic, solo student pilot operations are not recommended.

CAUTIONS

Possible lengthy delays associated with heavy arrival and departure times. Heavy arrivals expected **8:00 AM—11:00 AM** Friday and Saturday. Heavy departures expected **3:00 PM—6:00 PM** on Saturday.

High volume of rotary and fixed wing training in the area; surface to 17,500 feet MSL.

Numerous special use airspace in the vicinity of JKA.

Several tall towers (2000 feet MSL or more) along the arrival routes.

Restricted area R-2908: 3 NM southwest of JKA.

Bon Secour National Wildlife Refuge 5 NM southwest of JKA.

Class C Airspace: Pensacola Naval Air Station (NPA), 8 NM East of JKA.

Class C Airspace: Mobile Regional Airport (MOB), 29 NM Northwest of JKA.

Special Air Traffic Rule, FAR Part 93 Eglin/Valparaiso Terminal Area: 55 NM Northeast of JKA.

FREQUENCIES AND WAYPOINT INFORMATION

EN ROUTE FREQUENCIES	
Pensacola Approach	118.0
Mobile Approach	121.0

JACK EDWARDS NATIONAL AIRPORT FREQUENCIES	
Jack Edwards AWOS	134.525
AWOS telephone number	251-968-7581
Jack Edwards Advisory	119.420
Jack Edwards UNICOM	122.7
Pensacola Approach/Departure	120.65
Pensacola Clearance	124.55

FREQUENCIES AND WAYPOINT INFORMATION - continued

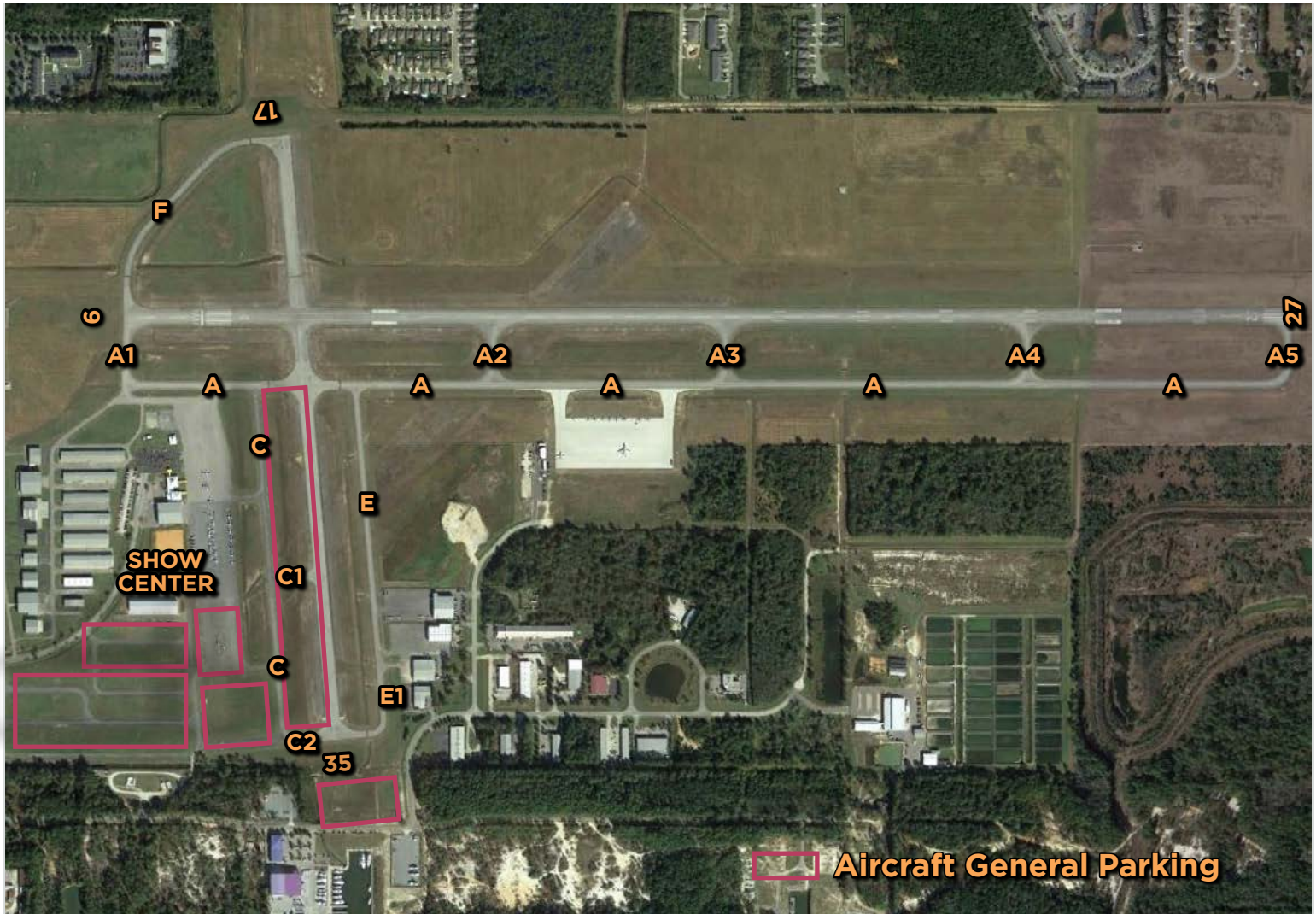
SPECIFIC LATITUDE/LONGITUDE COORDINATES

ARRIVALS OVER BREWTON MUNICIPAL AIRPORT (12J)		ARRIVALS OVER BAY MINETTE MUNICIPAL AIRPORT (1R8)	
Brewton Municipal Airport (12J)	N31°03'06"/W87°03'56"	Bay Minette Municipal Airport (1R8)	N30°52'14"/W87°49'05"
Intersection of SR59 and I-10	N30°39'07"/W87°45'36"	Intersection of SR59 and I-10	N30°39'07"/W87°45'36"
Summerdale	N30°29'19"/W87°41'59"	Summerdale	N30°29'19"/W87°41'59"
SR59 Dog Leg Reporting Point	N30°28'49"/W87°42'28"	SR59 Dog Leg Reporting Point	N30°28'49"/W87°42'28"
Foley High School	N30°22'54"/W87°41'22"	Foley High School	N30°22'54"/W87°41'22"
Tanger Outlet Mall	N30°22'33"/W87°40'46"	Tanger Outlet Mall	N30°22'33"/W87°40'46"
Jack Edwards National Airport (JKA)	N30°17'23"/W87°40'18"	Jack Edwards National Airport (JKA)	N30°17'23"/W87°40'18"

DEGREES, MINUTES, SECONDS CONVERTED TO DECIMAL DEGREES

ARRIVALS OVER BREWTON MUNICIPAL AIRPORT (12J)		ARRIVALS OVER BAY MINETTE MUNICIPAL AIRPORT (1R8)	
Brewton Municipal Airport (12J)	31.05166667°/ 87.06555556°	Bay Minette Municipal Airport (1R8)	30.87055556°/ 87.81805556°
Intersection of SR59 and I-10	30.65194444°/ 87.76000000°	Intersection of SR59 and I-10	30.65194444°/ 87.76000000°
Summerdale	30.48861111°/ 87.69972222°	Summerdale	30.48861111°/ 87.69972222°
SR59 Dog Leg Reporting Point	30.48027778°/ 87.70777778°	SR59 Dog Leg Reporting Point	30.48027778°/ 87.70777778°
Foley High School	30.38166667°/ 87.68944444°	Foley High School	30.38166667°/ 87.68944444°
Tanger Outlet Mall	30.37583333°/ 87.67944444°	Tanger Outlet Mall	30.37583333°/ 87.67944444°
Jack Edwards National Airport (JKA)	30.28972222°/ 87.67166667°	Jack Edwards National Airport (JKA)	30.28972222°/ 87.67166667°

JACK EDWARDS NATIONAL AIRPORT (JKA) GENERAL INFORMATION



PARKING AREAS

- When operating in the parking areas, pilots are encouraged to be extra alert for taxiing aircraft, aircraft with engine(s) running, and vehicle/pedestrian traffic.
- Marshalls will be assisting aircraft to and from parking areas and run-up areas.
- For safety reasons, high RPM engine running is prohibited in designated parking areas. For departure, it is recommended that pilots conduct their run-up procedures in queue if practical.
- Please review the parking map prior to landing and departing.

VEHICULAR TRAFFIC

- Vehicles are not allowed on ramps except those belonging to airport operators and tenants.

PREFLIGHT PLANNING

- Please ensure that you have reviewed the special flight information, departure procedures, and temporary taxi procedures prior to engine start.
- High density traffic is expected Friday and Saturday morning. Consider arriving during off-peak hours.

JACK EDWARDS NATIONAL AIRPORT (JKA) DEPARTURE PROCEDURES

IFR DEPARTURES

Locate a marshaller to monitor engine start. Place printed large IFR letters in the windshield. Follow marshallsers instructions to taxi to the nearest designated IFR departure holding area. Contact Jack Edwards Advisory on **119.420** and inform them that you are departing IFR. IFR departures should obtain a clearance from Pensacola Clearance on **124.55**.

DO NOT CONTACT PENSACOLA CLEARANCE UNTIL YOU ARE PREPARED TO DEPART.

VFR DEPARTURES

VFR Flight Following: Pilots wanting VFR flight-following should make the request to the appropriate ATC facility when 10 NM from Jack Edwards National Airport.

- Heading East from Weeks Bay contact Pensacola Approach on **120.65**.
- Heading Northeast from Weeks Bay contact Pensacola Approach on **118.6**.
- Heading North or Northwest along the eastern shore of Mobile Bay contact Mobile Approach on **118.5**.
- Heading West from Fort Morgan/Dauphin Island contact Mobile Approach on **121.0**.

VFR Traffic Advisories/Flight Following will be provided on a workload-permitting basis only.

Prior to start-up — Please ensure that you have reviewed the special flight information, departure procedures, and temporary taxi procedures prior to engine start. Check AWOS on **134.525**.

- **Engine start** – Locate a marshaller to monitor engine start.
- **Run-up** – If practical, it is recommended that you conduct your run-up while in queue for departure. Please consider propeller blast during your run-up.
- **Taxi** – Follow instructions from marshallsers and **MONITOR ONLY** Jack Edwards Advisory on **119.420**.
- **Departure** — Contact Jack Edwards Advisory on **119.420** when **NUMBER 1** for departure. Be prepared for immediate departure.

Departing runway 9

Depending on destination, aircraft should turn right after takeoff and depart off the downwind direct to either Weeks Bay or Fort Morgan/Dauphin Island. Aircraft departing toward Weeks Bay and heading North or Northwest should continue along the eastern side of Mobile Bay until reaching Interstate 10 and then turn on course. Aircraft heading Northeast or East can turn on course after reaching Weeks Bay. Aircraft departing westbound can turn on course after reaching Fort Morgan/Dauphin Island. (See *graphics page 14.*)

Additional Eastbound Coast Route—SATURDAY ONLY!!!

Aircraft departing eastbound using the Eastbound Coastal Route should depart straight out staying along the shoreline. Aircraft on this route must be able to maintain **3500** feet MSL. To reduce frequency congestion, aircraft on this route are also authorized to penetrate Class C Airspace without contacting ATC. *This authorization is **ONLY** for aircraft following the Eastbound Coastal Route.*

It is recommended to contact Eglin Approach on **132.1** for VFR flight following prior to reaching the Navarre Bridge. (See *graphics pages 15-16.*)

Departing runway 27

Depending on destination, aircraft should either turn right after takeoff and fly direct to Weeks Bay or continue straight out toward Fort Morgan/Dauphin Island. Aircraft departing toward Weeks Bay and heading North or Northwest should continue along the eastern side of Mobile Bay until reaching Interstate 10 and then turn on course. Aircraft heading Northeast or East can turn on course after reaching Weeks Bay. Aircraft departing westbound can turn on course after reaching Fort Morgan/Dauphin Island. (See *graphics page 14.*)

Additional Eastbound Coast Route—SATURDAY ONLY!!!

Aircraft departing eastbound using the Eastbound Coastal Route should turn left after departure and fly eastbound along the shoreline. Aircraft on this route must be able to maintain **3500** feet MSL. To reduce frequency congestion, aircraft on this route are also authorized to penetrate Class C Airspace without contacting ATC. *This authorization is **ONLY** for aircraft following the Eastbound Coastal Route.*

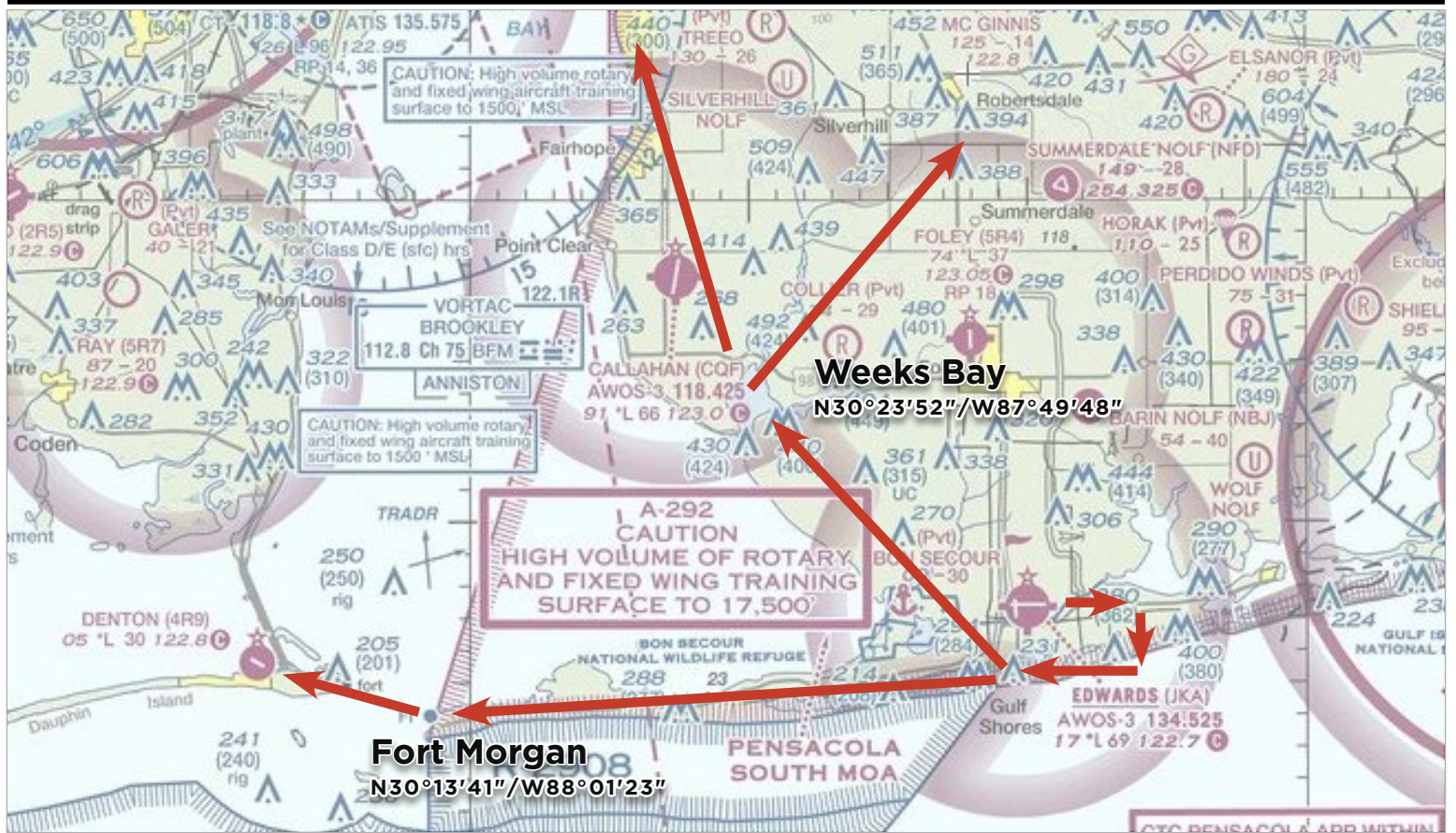
It is recommended to contact Eglin Approach on **132.1** for VFR flight following prior to reaching the Navarre Bridge. (See *graphics pages 15-16.*)

Special Air Traffic Rule, FAR Part 93—Eglin/Valparaiso Terminal Area

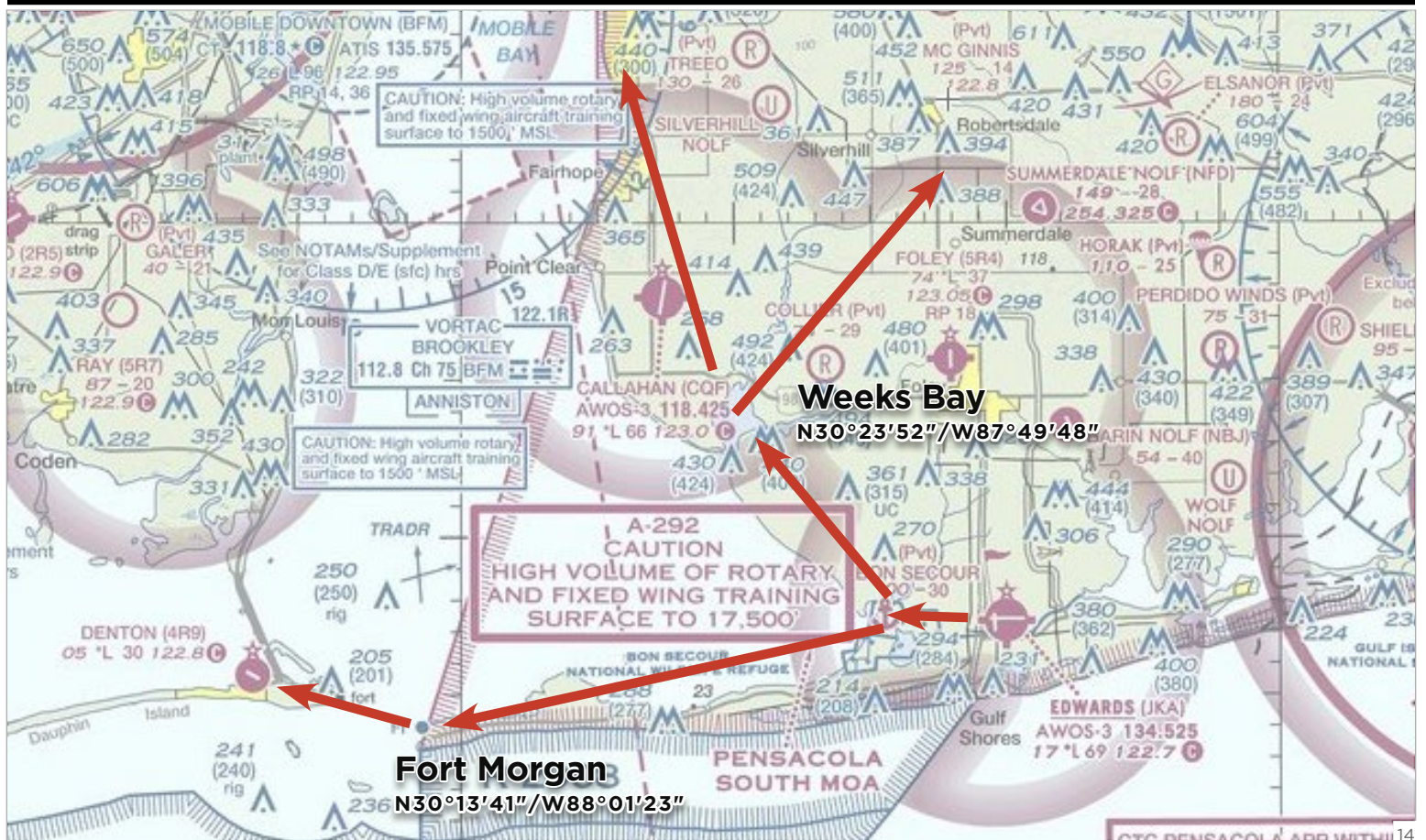
Take the course at [FAASafety.gov](https://www.faasafety.gov) for operating around Eglin Air Force Base/Fort Walton Beach, FL.

https://www.faasafety.gov/gslac/ALC/course_catalog.aspx

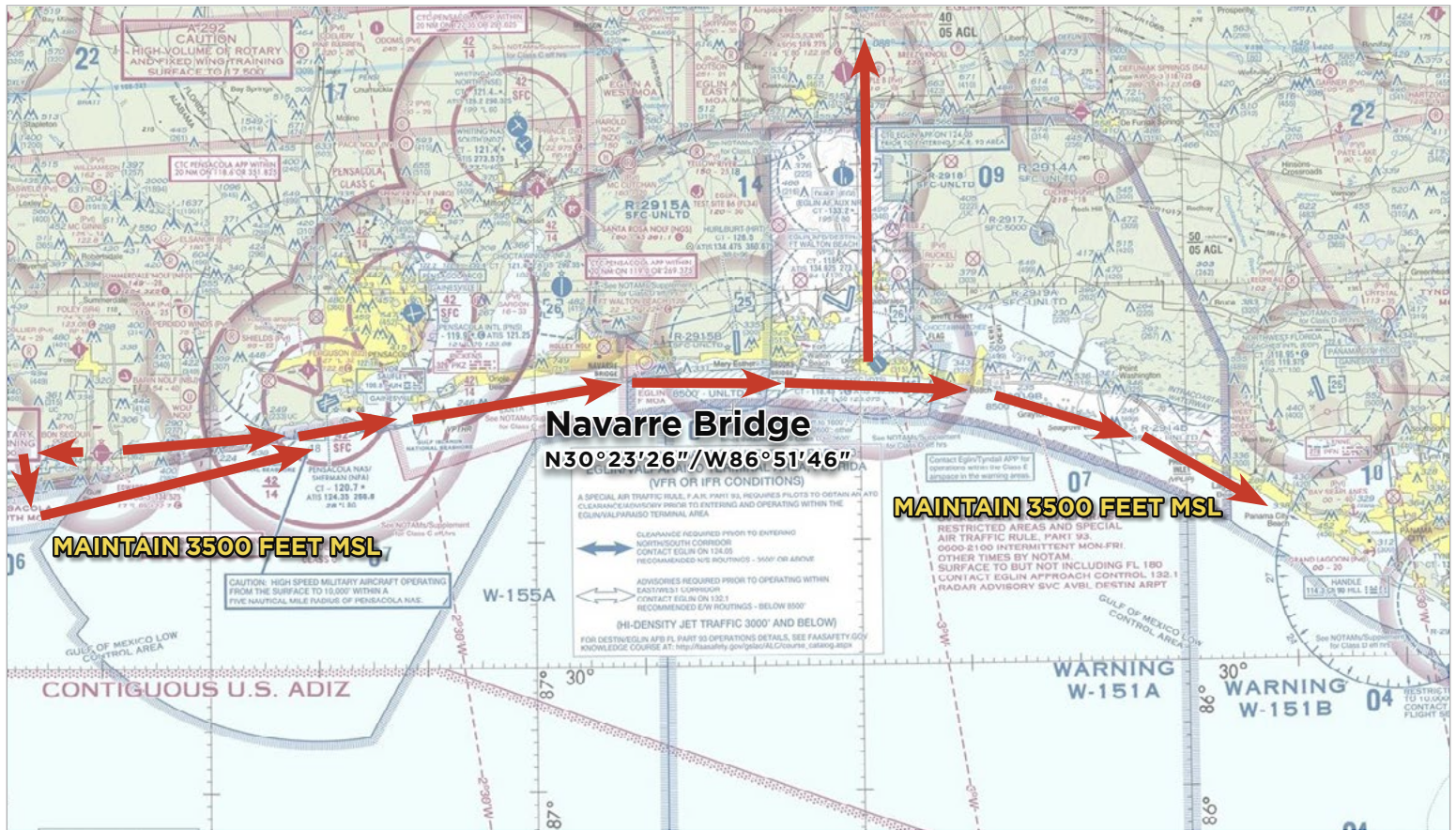
DEPARTING RUNWAY 9



DEPARTING RUNWAY 27



ADDITIONAL EAST BOUND COASTAL ROUTE - SATURDAY ONLY



SPECIAL AUTHORIZATION TO PENETRATE CLASS C AIRSPACE

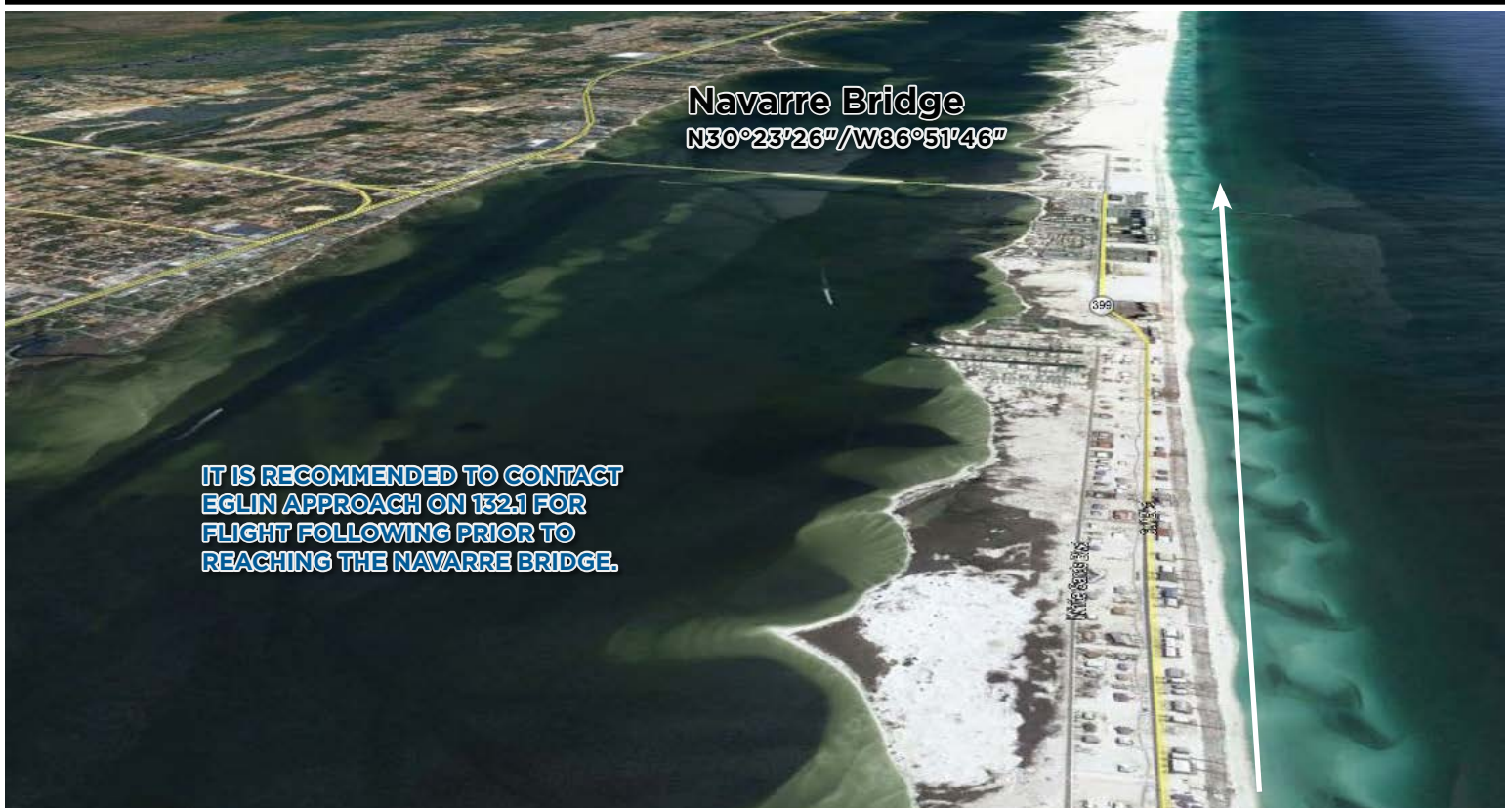
AIRCRAFT DEPARTING EASTBOUND ALONG THE COAST MUST BE ABLE TO MAINTAIN 3500 FEET MSL.

TO REDUCE FREQUENCY CONGESTION, AIRCRAFT ON THIS ROUTE ARE ALSO AUTHORIZED TO PENETRATE CLASS C AIRSPACE WITHOUT CONTACTING ATC.

THIS AUTHORIZATION IS ONLY FOR AIRCRAFT FOLLOWING THE EASTBOUND COASTAL ROUTE.

IT IS RECOMMENDED TO CONTACT EGLIN APPROACH ON 132.1 FOR VFR FLIGHT FOLLOWING PRIOR TO REACHING THE NAVARRE BRIDGE.

VFR PROCEDURES - Navarre Bridge



IT IS RECOMMENDED TO CONTACT EGLIN APPROACH ON 132.1 FOR FLIGHT FOLLOWING PRIOR TO REACHING THE NAVARRE BRIDGE.

Jack Edwards AWOS 134.525

Jack Edwards Advisory 119.420

Jack Edwards UNICOM 122.7

VFR PROCEDURES - Navarre Bridge — Overview




IT IS RECOMMENDED TO CONTACT EGLIN APPROACH ON 132.1 FOR FLIGHT FOLLOWING PRIOR TO REACHING THE NAVARRE BRIDGE.

Jack Edwards AWOS 134.525

Jack Edwards Advisory 119.420

Jack Edwards UNICOM 122.7

VFR PROCEDURES - Brewton Municipal Airport (12J)



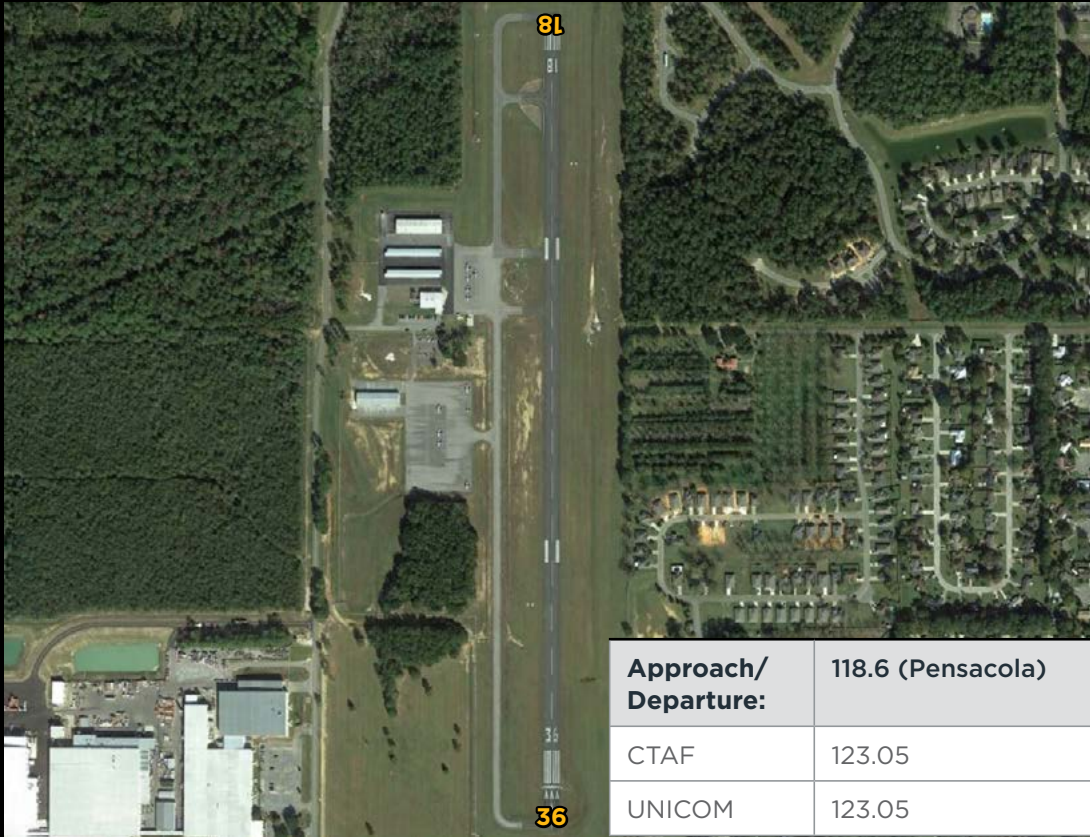
Approach/Departure:	127.35 (Pensacola)
AWOS-3PT	119.325T (251) 809-2987
CTAF	122.725
UNICOM	122.725

VFR PROCEDURES - Bay Minette Municipal Airport (1R8)

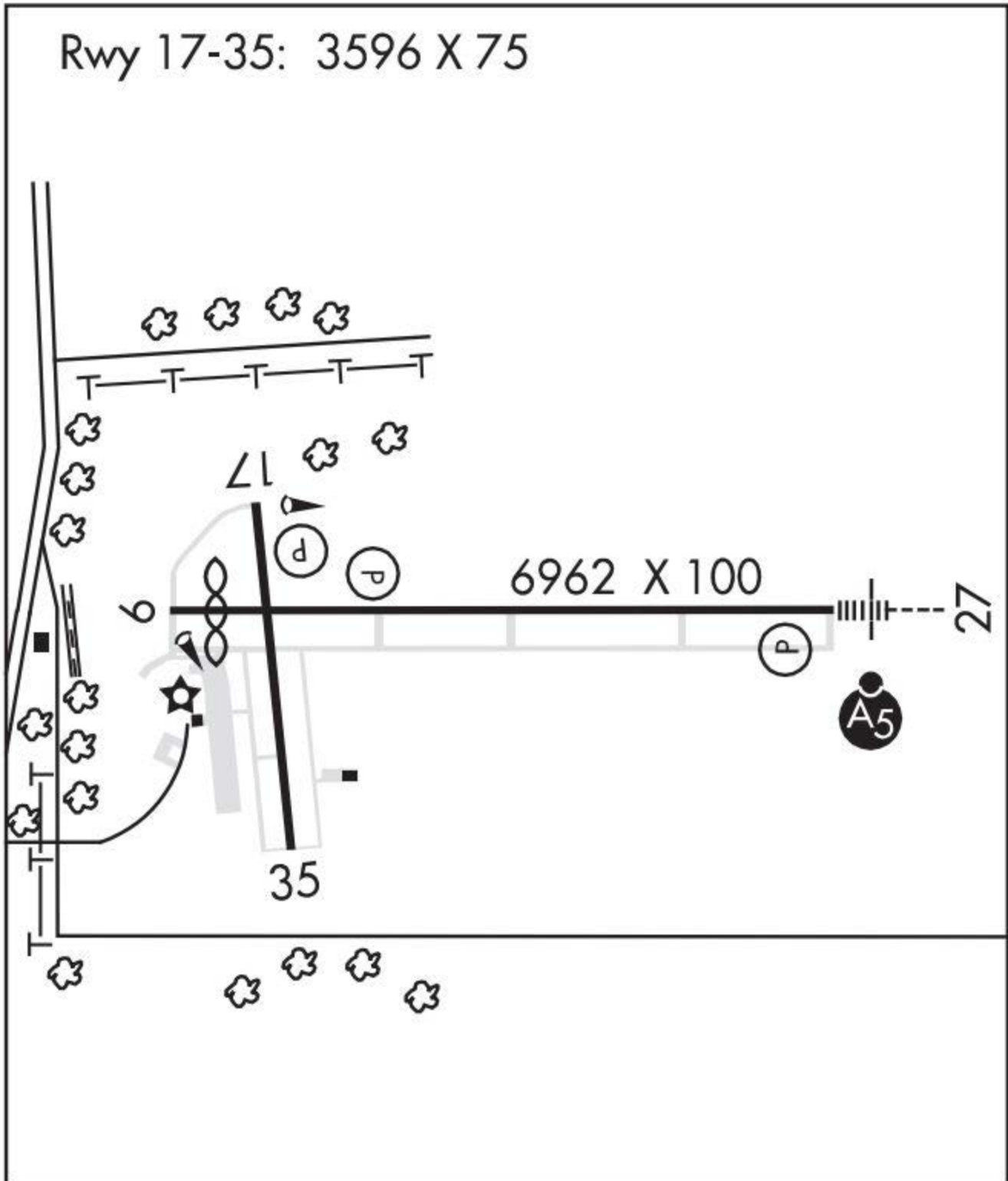


Approach/Departure:	118.5 Mobile
CTAF	122.8
UNICOM	122.8

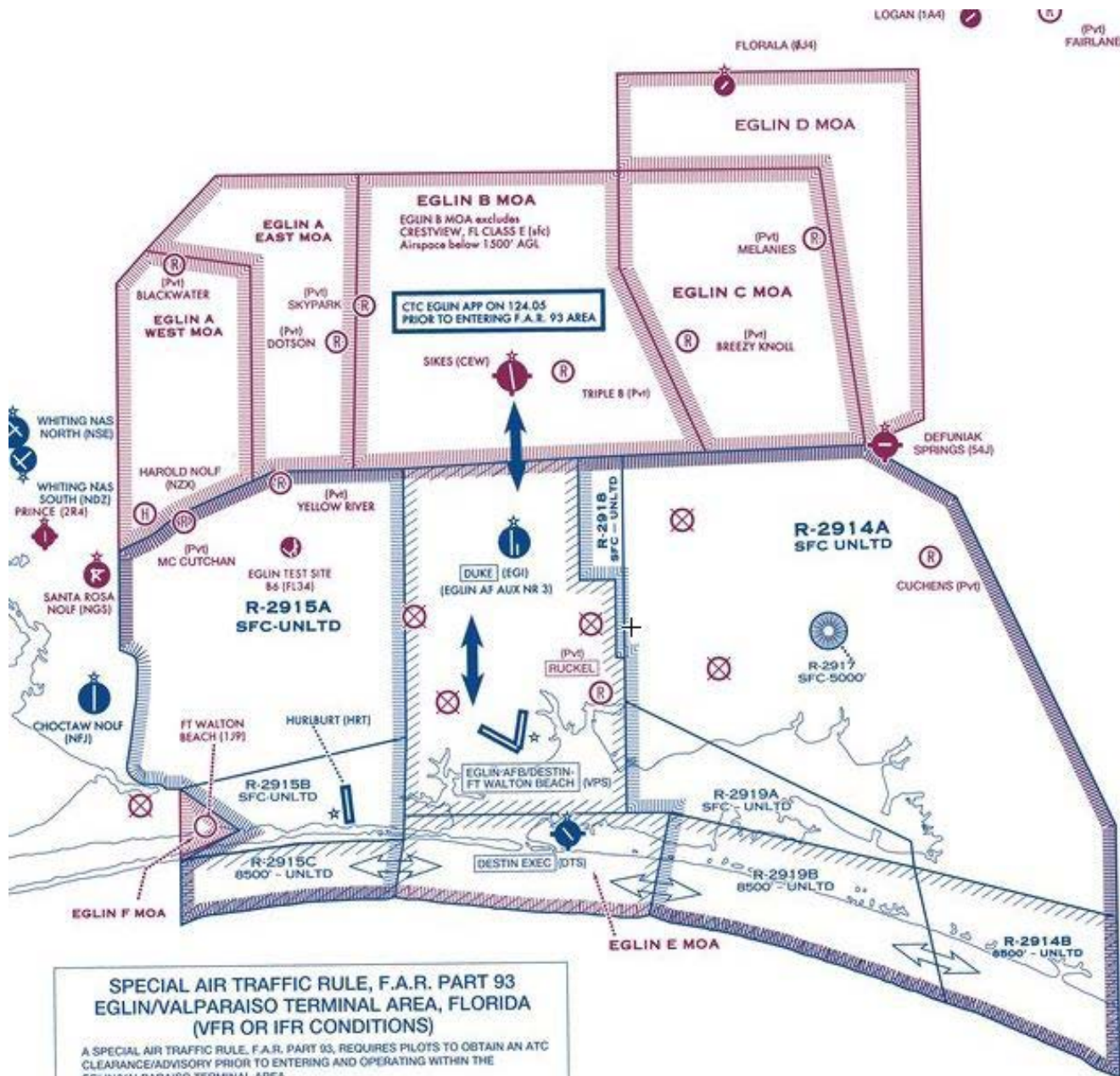
VFR PROCEDURES - Foley Municipal Airport (5R4)



AIRPORT DIAGRAM



EGLIN/VALPARAISO TERMINAL AREA



**SPECIAL AIR TRAFFIC RULE, F.A.R. PART 93
EGLIN/VALPARAISO TERMINAL AREA, FLORIDA
(VFR OR IFR CONDITIONS)**

A SPECIAL AIR TRAFFIC RULE, F.A.R. PART 93, REQUIRES PILOTS TO OBTAIN AN ATC CLEARANCE/ADVISORY PRIOR TO ENTERING AND OPERATING WITHIN THE EGLIN/VALPARAISO TERMINAL AREA

←→ CLEARANCE REQUIRED PRIOR TO ENTERING NORTH/SOUTH CORRIDOR
CONTACT EGLIN ON 124.05
RECOMMENDED N/S ROUTINGS - 3500' OR ABOVE

↔ ADVISORIES REQUIRED PRIOR TO OPERATING WITHIN EAST/WEST CORRIDOR
CONTACT EGLIN ON 132.1
RECOMMENDED E/W ROUTINGS - BELOW 8500'

(HI-DENSITY JET TRAFFIC 3000' AND BELOW)

FOR DESTIN/EGLIN AFB FL PART 93 OPERATIONS DETAILS, SEE FAASAFETY.GOV
KNOWLEDGE COURSE AT: http://faasafety.gov/gslac/ALC/course_catalog.aspx

EGLIN E MOA
OVERLIES ALL EGLIN/VALPARAISO RESTRICTED AREAS AND SPECIAL AIR TRAFFIC RULE, PART 93.
0600-2100 INTERMITTENT MON-FRI.
OTHER TIMES BY NOTAM.
SURFACE TO BUT NOT INCLUDING FL 180
CONTACT EGLIN APPROACH CONTROL 132.1
RADAR ADVISORY SVC AVBL DESTIN ARPT

VFR PROCEDURES - Arrivals over Brewton Municipal Airport (12J)



VFR PROCEDURES - Arrivals over Brewton Municipal Airport (12J)

✓ **CHECK ATIS ON 134.525 AS SOON AS PRACTICAL.**

This procedure begins over Brewton Municipal Airport (12J) at 6500 feet MSL. If unable to maintain 6500 feet MSL due to weather, aircraft should fly at or below 2500 feet MSL, if possible, to avoid military traffic at other altitudes. From Brewton Municipal Airport fly direct to the intersection of SR59 and Interstate 10. Approximate heading of 238° @ 43NM. **MONITOR ONLY** Pensacola Approach on 118.0. (See graphics pages 4-5).

⚠ **CAUTION: Stay alert for converging aircraft. Turn on all lights if practical for maximum visibility.**

Maintain 6500 feet MSL, if able, until south of V 198-241 (263° radial from the Crestview (CEW) VORTAC 115.9). Descend to 4500 feet MSL prior to reaching the intersection of SR59 and Interstate 10. If at or below 2500 feet MSL due to weather, maintain that altitude until beginning descent to pattern altitude.

⚠ **CAUTION: Stay alert for aircraft arriving from the Northwest/Bay Minette Municipal Airport (1R8) at 4500 feet MSL.**

From the intersection of SR59 and Interstate 10, follow SR59 south toward Gulf Shores and Jack Edwards National Airport. Begin descent to 2500 feet MSL at pilot's discretion.

Approximately 10 NM south of the intersection near the town of Summerdale, SR59 turns briefly southeast before turning south again. This "Dog Leg" in the road is the initial reporting point and

is approximately 10 NM from Jack Edwards National Airport. Contact Jack Edwards Advisory on 119.420 and report when over the "Dog Leg". (See graphics page 6.)

Continue inbound and follow instructions from Jack Edward Advisory. Approximately 5 NM from Jack Edwards National Airport, there will be a blue roofed school (Foley High School) on the right side of SR59 and Tanger Outlet Mall on the left side of SR59.

Continue inbound and follow instructions from Jack Edwards Advisory. If traffic volume requires holding, expect to fly the hold procedure as depicted in the **GULF SHORES VFR HOLD GRAPHIC**. All aircraft should fly right turns at 2500 feet MSL. (See graphics page 8.)

⚠ **CAUTION: Stay alert for converging aircraft.**

When Jack Edwards Advisory announces that holding is no longer required, aircraft should proceed inbound after completing the hold and arriving back over SR59 just south of Foley Municipal Airport.

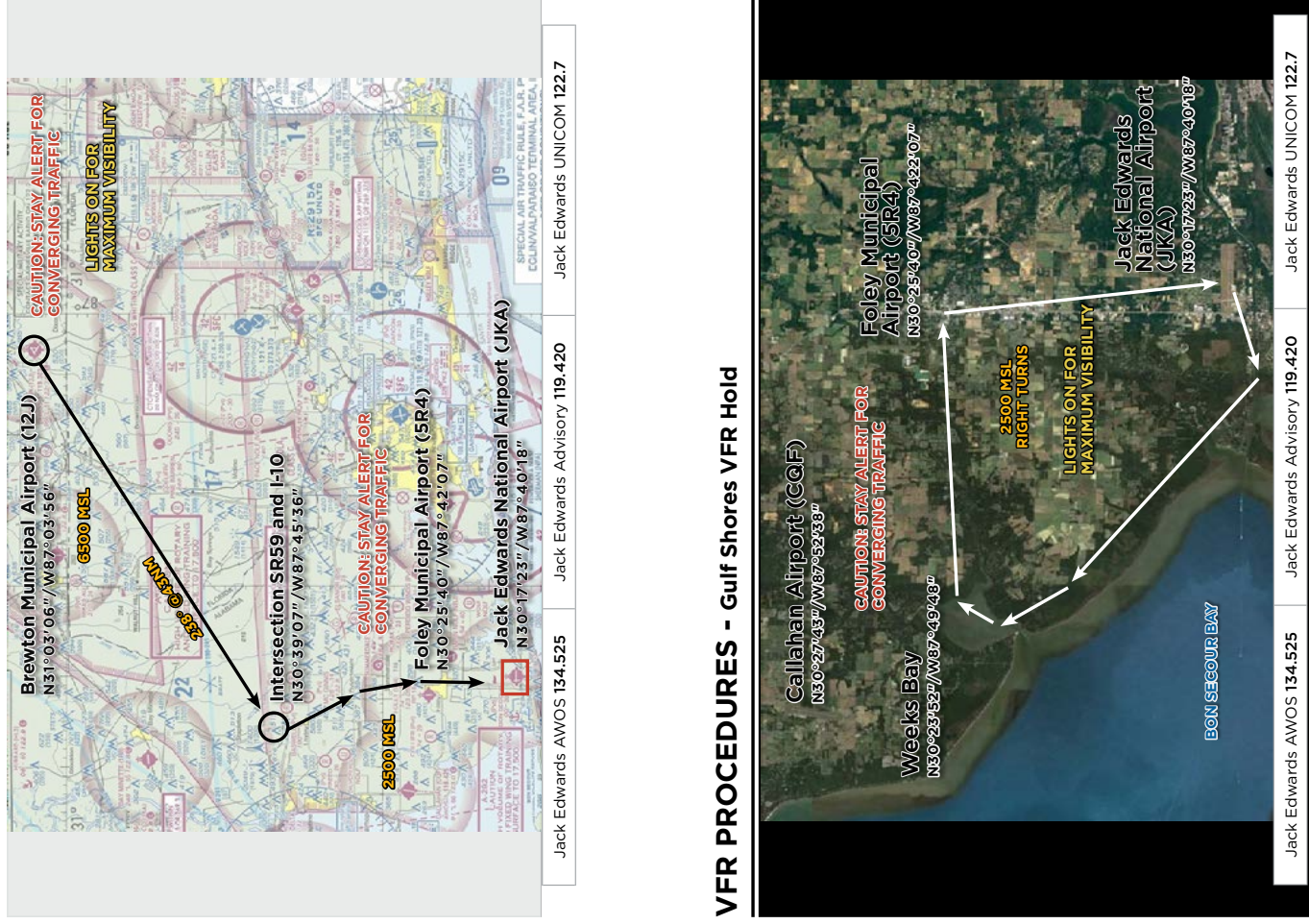
Follow landing instructions from Jack Edwards Advisory on 119.420.

JKA TPA: 1000 feet MSL

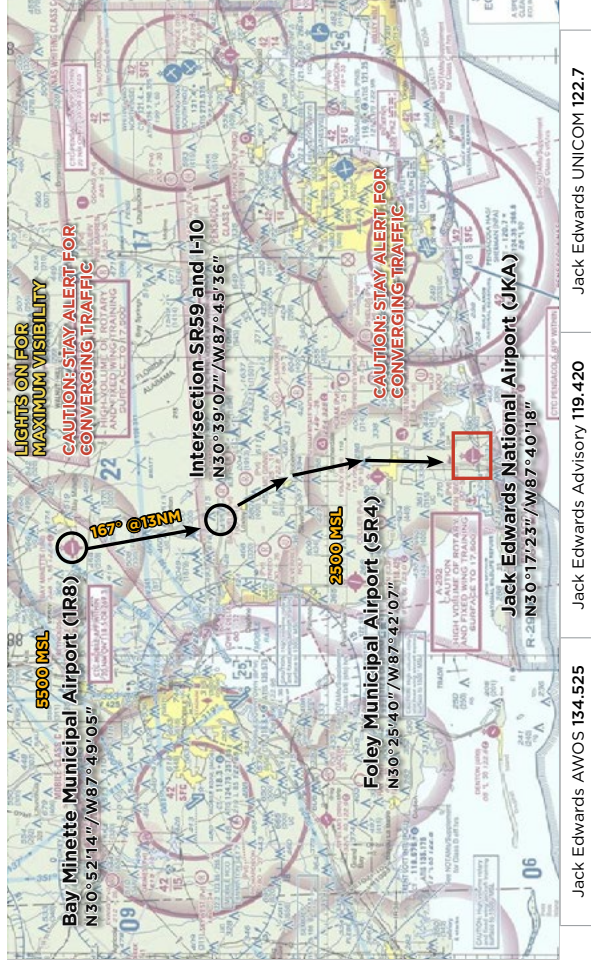
After landing, do not stop on the runway unless necessary. Exit the runway as quickly and as safely as possible at the first available taxiway. Keep moving and follow instructions from Jack Edwards Advisory on 119.420. Marshalls will direct aircraft to the parking areas.



VFR PROCEDURES - Gulf Shores VFR Hold



VFR PROCEDURES - Arrivals over Bay Minette Municipal Airport (1R8)



VFR PROCEDURES - Arrivals over Bay Minette Municipal Airport (1R8)

✓ CHECK ATIS ON 134.525 AS SOON AS PRACTICAL.

This procedure begins over Bay Minette Municipal Airport (1R8) at **5500** feet MSL. If unable to maintain **5500** feet MSL due to weather, aircraft should fly at or below **2500** feet MSL, if possible, to avoid military traffic at other altitudes. **MONITOR ONLY** Pensacola Approach on **118.0**.

From Bay Minette Municipal Airport fly direct to the intersection of SR59 and Interstate 10 (approximate heading of **167° @ 13NM**) or follow SR59 south from the town of Bay Minette. Descend to **4500** feet MSL prior to reaching the intersection of SR59 and Interstate 10. (See graphics pages 4-5.) If at or below **2500** feet MSL due to weather maintain that altitude until beginning descent to pattern altitude.

! CAUTION: Stay alert for converging aircraft. Turn on all lights if practical for maximum visibility.

! CAUTION: Aircraft will be arriving at the same altitude from the northeast at the intersection of SR59 and Interstate 10.

From the intersection of SR59 and Interstate 10, follow SR59 south toward Gulf Shores and Jack Edwards National Airport. Begin descent to **2500** feet MSL at pilot's discretion.

Approximately 10 NM south of the intersection near the town of Summerdale, SR59 turns briefly southeast before turning south again. This "Dog Leg" in the road is the initial reporting point and is approximately 10 NM from Jack Edwards National Airport. Contact Jack Edwards Advisory

on **119.420** and report when over the "Dog Leg". (See graphics page 6.)

Continue inbound and follow instructions from Jack Edwards Advisory. Approximately 5 NM from Jack Edwards National Airport, there will be a blue roofed school (Foley High School) on the right side of SR59 and Tanger Outlet Mall on the left side of SR59.

Continue inbound and follow instructions from Jack Edwards Advisory. If traffic volume requires holding, expect to fly the hold procedure as depicted in the **GULF SHORES VFR HOLD GRAPHIC**. All aircraft should fly right turns at **2500** feet MSL. (See graphics page 8.)

! CAUTION: Stay alert for converging aircraft. Turn on all lights if practical for maximum visibility.

When Jack Edwards Advisory announces that holding is no longer required, aircraft should proceed inbound after completing the hold and arriving back over SR59 just south of Foley Municipal Airport.

Follow landing instructions from Jack Edwards Advisory on **119.420**.

JKA TPA: 1000 feet MSL

After landing, do not stop on the runway unless necessary. Exit the runway as quickly and as safely as possible at the first available taxiway. Keep moving and follow instructions from Jack Edwards Advisory on **119.420**. Marshalls will direct aircraft to the parking areas.



VFR PROCEDURES - Gulf Shores VFR Hold



ADDITIONAL INFORMATION

AOPA FLY-IN HOST FBOs AT JACK EDWARDS NATIONAL AIRPORT (JKA)

The AOPA Fly-In Host FBOs at Jack Edwards National Airport (JKA) are Gulf Air Center, Platinum Air Center JKA, and Salt Air Aviation Center. We thank them for their support, enthusiasm, and participation in the AOPA Fly-In at JKA.



GULF AIR CENTER

3190 Airport Drive
Gulf Shores, AL 36542

Hours of operation:

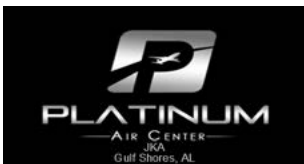
Monday-Sunday 7:00 AM CDT – 8:00 PM CDT

Phone: 251-968-5200

FAX: 251-968-5205

Email: csr@gulfaircenter.com

Website: <http://www.gulfaircenter.com/>



PLATINUM AIR CENTER

1155 Commerce Drive
Gulf Shores, AL 36542

Hours of operation:

Monday-Sunday 6:00 AM CDT – 10:00 PM CDT

Phone: 251-923-0050

FAX: 251-975-0539

Arinc: 130.75

Email: info.jka@platinumaircenter.com

Website: <http://www.platinumaircenter.com>



SALT AIR AVIATION CENTER

1215 Commerce Drive
Gulf Shores, AL 36542

Hours of operation:

Monday-Sunday 7:00 AM CDT – 8:00 PM CDT

Phone: 251-948-0444

FAX: 251-441-0726

Email: info@saltairaviation.com

Website: <http://www.saltairaviation.com/>

PARKING AND SERVICE DETAILS

Fuel/oil orders will be taken at the time your aircraft is parked. If you need either, please make sure to make the request at that time. Orders made at a later time might delay your departure. Credit card information will be requested at the time the order is placed. Receipts if requested will be emailed or available in the FBO. Order slip will be attached to propeller. If you are uncomfortable providing credit card information on the ramp, you can provide the information directly to the FBO's front desk.

CHOCKS AND TIE DOWNS

Chocks will be available in limited quantities so we highly recommend that you bring your own. Tie down hooks are scattered on the ramp and parking on a tie down space is unlikely. It is recommended that you bring tie-downs and anchors for any additional aircraft securing needs.

ADDITIONAL INFORMATION - continued

CAMPING

Aircraft camping will be permitted at Jack Edwards National Airport (JKA) from 12:00 Noon CDT on Thursday, October 25, 2018 until 12:00 Noon CDT on Sunday, October 28, 2018. Space is limited and will be available on a first-come, first-served basis. If you plan to camp, you must RSVP ahead of time. A confirmation will be sent with additional information. Camping aircraft will be requested to prominently display the letter C in the windshield. [See the AOPA website for more information.](#)

AFTER-HOURS DEPARTURES

If you will be departing after the airport's normal operating hours, please contact the after-hours Line Service number for the FBO that serviced you. An after-hours callout is subject to an additional fee.

RENTAL CAR AVAILABILITY



Phone: 866-315-9155



Phone: 800-577-1569



Phone: 800-654-2210



Phone: 800-527-0700



Phone: 866-315-9155



Phone: 866-315-9155



Phone: 800-334-1705



Phone: 800-800-4000

ADDITIONAL INFORMATION - continued

OTHER AREA AIRPORTS

There are several public use airports that are within a one-hour drive of Jack Edwards National Airport (JKA). You might elect to use one of these airports in the event aircraft parking reaches capacity at JKA. Rental cars are also available at many of these airports.



FOLEY MUNICIPAL AIRPORT (5R4) is located 8 NM northwest of Jack Edwards National Airport (JKA) and is approximately a 25-minute drive to JKA. Foley Municipal Airport has one hard surface runway. 18/36 is 3700 X 74. The airspace is Class G. Contact Lightning Aviation for rental car availability. Ph. 251-943-5214.



H L SONNY CALLAHAN AIRPORT (CQF) is located 15 NM northwest of Jack Edwards National Airport (JKA) and is approximately a 40-minute drive to JKA. H L Sonny Callahan Airport has one hard surface runway. 01/19 is 6604 X 100. The airspace is Class G. Contact Continental Motors, Inc. for rental car availability. Ph. 251-990-5080.



PENSACOLA INTERNATIONAL AIRPORT (PNS) is located 27 NM northeast of Jack Edwards National Airport (JKA) and is approximately a 1-hour drive to JKA. Pensacola International Airport has two hard surface runways. 17/35 is 7004 X 150. 08/26 is 7000 X 150. The airspace is Class C. Numerous rental car agencies are available at PNS. <http://flypensacola.com/page/Transportation>



MOBILE DOWNTOWN AIRPORT (BFM) is located 29 NM northwest of Jack Edwards National Airport (JKA) and is approximately a 1-hour drive to JKA. Mobile Downtown Airport has two hard surface runways. 14/32 is 9618 X 150. 18/36 is 7800 X 150. The airspace is Class D and underlies Mobile Regional Airport (MOB) Class C airspace. Contact Signature Flight Support for rental car availability. 251-433-2800.

H L SONNY CALLAHAN AIRPORT (CQF)

Approach/Departure	118.5
AWOS-3PT	118.425T (251)-928-3242
CTAF	123.0
UNICOM	123.0

PENSACOLA INTERNATIONAL AIRPORT (PNS)

Approach(s) Departure(s)	124.05
Approach(s) Departure(s)	132.1
ASOS	(850) 436-4799
ATIS	121.25
Clearance-Delivery	123.725
CTAF	119.9
Departure	125.35
Ground Control	121.9
Tower	119.9
UNICOM	122.95

MOBILE DOWNTOWN AIRPORT (BFM)



LANDING RUNWAY 9 AT JACK EDWARDS NATIONAL AIRPORT

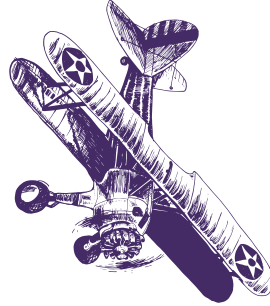


LANDING RUNWAY 27 AT JACK EDWARDS NATIONAL AIRPORT



SEE AND BE SEEN!

REMEMBER, LIGHTS ON
FOR SAFETY!



FLY-IN

GULF SHORES, ALABAMA

OCTOBER 26-27, 2018



Print & place graphic in aircraft windshield upon arrival



**Print & place graphic in
aircraft windshield if departing IFR**