

**KTPF**  
PETER O. KNIGHT AIRPORT



# FLY-IN TAMPA, FL

10/27 | 17  
10/28

PILOT INFORMATION  
PACKET

SPECIAL FLIGHT PROCEDURES  
EFFECTIVE

12:00 Noon EDT until 7:00 PM EDT Thursday, October 26, 2017

7:00 AM EDT until 7:00 PM EDT Friday, October 27, 2017

7:00 AM EDT until 7:00 PM EDT Saturday, October 28, 2017



# IMPORTANT INFORMATION

## PLEASE NOTE NOTAM EFFECTIVE TIMES

- 12:00 Noon EDT until 7:00 PM EDT Thursday, October 26, 2017
- 7:00 AM EDT until 7:00 PM EDT Friday, October 27, 2017
- 7:00 AM EDT until 7:00 PM EDT Saturday, October 28, 2017

## AIRPORT CLOSED DURING THESE TIMES

- 7:00 PM EDT Thursday, October 26, 2017 until 7:00 AM EDT Friday, October 27, 2017
- 7:00 PM EDT Friday, October 27, 2017 until 7:00 AM EDT Saturday, October 28, 2017
- 7:00 PM EDT Saturday, October 28, 2017 until 7:00 AM EDT Sunday, October 29, 2017

## CHOCKS OR TIE DOWNS ARE REQUIRED AND NOT PROVIDED. PLEASE BRING YOUR OWN.

## EARLY ARRIVALS (PRIOR TO THURSDAY, OCTOBER 26, 2017 - 12 NOON EDT) WILL NOT BE ACCOMMODATED IN THE AOPA ATTENDEE PARKING

- Camping NOT permitted prior to Thursday, October 26
- Aircraft parking will be at designated transient spaces managed by FBO
- Overnight fees will apply

## AIRCRAFT CAMPING

- **All Campers must pre-pay and pre-register.** Camping position not assured without reservation.
- **Please bring your own food and water!** Food is NOT provided on the airfield.
- **Ground Transportation is NOT provided** to get to locations offsite (taxi or rental car reservations must be made on your own).
- Food, Water, Sunscreen & Rain gear recommended
- **Restroom and shower facilities are “primitive.”** Porta-potties and handwashing stations will be provided; limited shower facilities may be available - but no guarantee on hot water...there may be lots of campers for just a couple of showers. Please come prepared!
- **Aircraft camping is open** from 12 Noon EDT Thursday, October 27 until 12 Noon EDT Sunday, October 28th.

# TABLE OF CONTENTS

## TAMPA, FLORIDA (TPF) PILOT INFORMATION PACKET

### NOTAM—TEMPORARY VFR PROCEDURES 01-13

VFR Arrivals Overview.....	1
VFR Procedures: Arrivals over Kidney Lake .....	2
VFR Procedures: Arrivals over Lake Parrish.....	3
Graphic—Approaching I-75 over Alafia River from Kidney Lake (North) .....	4
Graphic—Approaching I-75 over Alafia River from Kidney Lake (South).....	4
Graphic—I-75 Bridge to Chemical Plant.....	5
Graphic—Chemical Plant to Peter O. Knight Airport (TPF) .....	5
Graphic – Chemical Plant to Peter O. Knight Airport (TPF).....	6
Graphic—TPF VFR Hold.....	6
Graphic—TFP VFR Hold – Satellite view.....	7
IFR Delays.....	8
Airport Closure.....	8
Local Training and Practice Approaches.....	8
No Radio Aircraft.....	8
Student Pilots .....	8
Cautions .....	8

### FREQUENCY & WAYPOINT INFORMATION 09

Enroute frequencies.....	9
Peter O. Knight Airport Frequencies.....	9
Specific Latitude/Longitude Coordinates.....	9
Degrees, Minutes, Seconds converted to Decimal Degrees .....	9

### GENERAL INFORMATION 10

Graphic—Peter O. Knight Airport.....	10
Non-movement Areas .....	10
Parking Areas .....	10
Vehicular Traffic .....	10
Preflight Planning.....	10

### DEPARTURE PROCEDURES 11-13

IFR Departures.....	11
VFR Departures.....	11
- VFR Flight Following.....	11
- Prior to Start-up.....	11
- Engine Start.....	11
- Run-up.....	11

- Taxi.....	11
- Departure.....	11
- Departing Peter O. Knight Airport—Graphic .....	12
- Peter O. Knight Airport Diagram.....	13

## **KNEEBOARD QUICK REFERENCE GRAPHICS ..... 14-15**

VFR Procedures: Arrivals over Kidney Lake.....	14
VFR Procedures: Arrivals over Lake Parrish.....	15

## **ADDITIONAL INFORMATION ..... 16**

Host FBO information .....	16
Atlas Aviation .....	16
Parking and Service Details.....	16
Chocks and Tie Downs.....	16
Camping.....	16
Rental car availability .....	16

## **OTHER AREA AIRPORTS ..... 17**

Tampa International Airport (TPA).....	17
Tampa Executive Airport (VDF) .....	17
St Pete-Clearwater International Airport (PIE) .....	17
Albert Whitted Airport (SPG) .....	17
Plant City Airport (PCM) .....	17
Lakeland Linder Regional Airport (LAL) .....	17

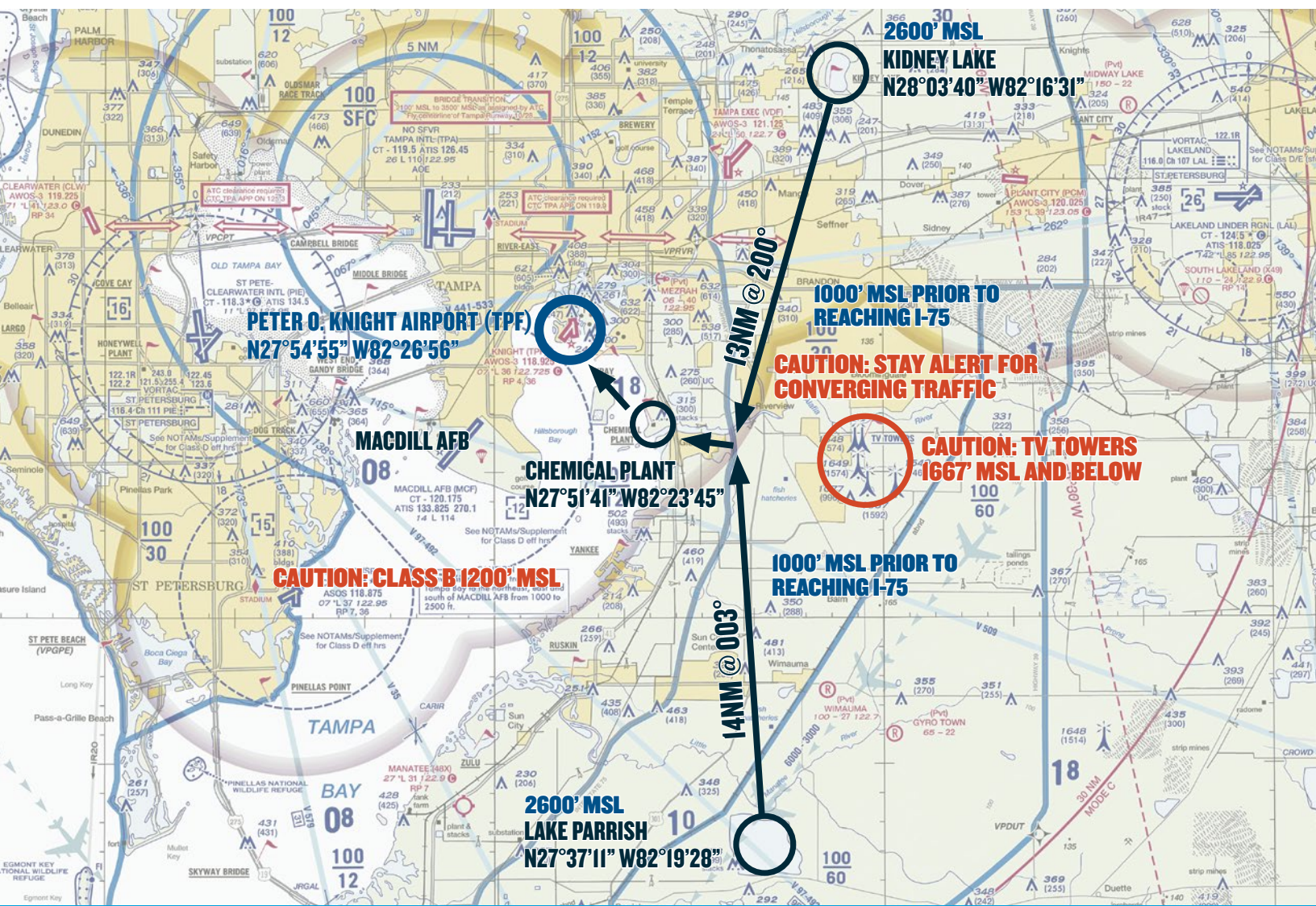
## **ADDITIONAL GRAPHICS ..... 18-21**

Landing Runway 4 at Peter O. Knight Airport .....	18
Landing Runway 22 at Peter O. Knight Airport.....	18
Tampa Executive Airport (VDF)—Satellite view with frequencies .....	19
Tampa International Airport (TPA)—Satellite view with frequencies .....	19
St Pete-Clearwater International Airport (PIE)—Satellite view with frequencies .....	20
Albert Whitted Airport (SPG)—Satellite view with frequencies .....	20
Plant City Airport (PCM)—Satellite view with frequencies .....	21
Lakeland Linder Regional Airport (LAL)—Satellite view with frequencies .....	21

## **AOPA TAMPA FLY-IN WINDSHIELD GRAPHIC—PRINTABLE ..... 22**



# VFR ARRIVALS OVERVIEW



AWOS: 118.925    TPF ADVISORY: 120.350    TPF UNICOM: 122.725    TAMPA APPROACH: 119.9 N & E; 119.65 S

## TEMPORARY VFR PROCEDURES

Specific procedures contained within this NOTAM may be revised at the time of the event. Pilots are urged to review all applicable NOTAMs and arrival/departure procedures prior to conducting a flight to Peter O. Knight Airport. Users are encouraged to check NOTAMs frequently to verify they possess the most current revisions. This NOTAM does not supersede restrictions pertaining to the use of airspace contained in FDC NOTAMS.

## ALL VFR ARRIVALS BEGIN AT

1. Kidney Lake, 13 NM northeast of Peter O. Knight Airport (TPF), or
2. Lake Parrish, 19 NM southeast of Peter O. Knight Airport (TPF).

## TPF AIRPORT ADVISORY

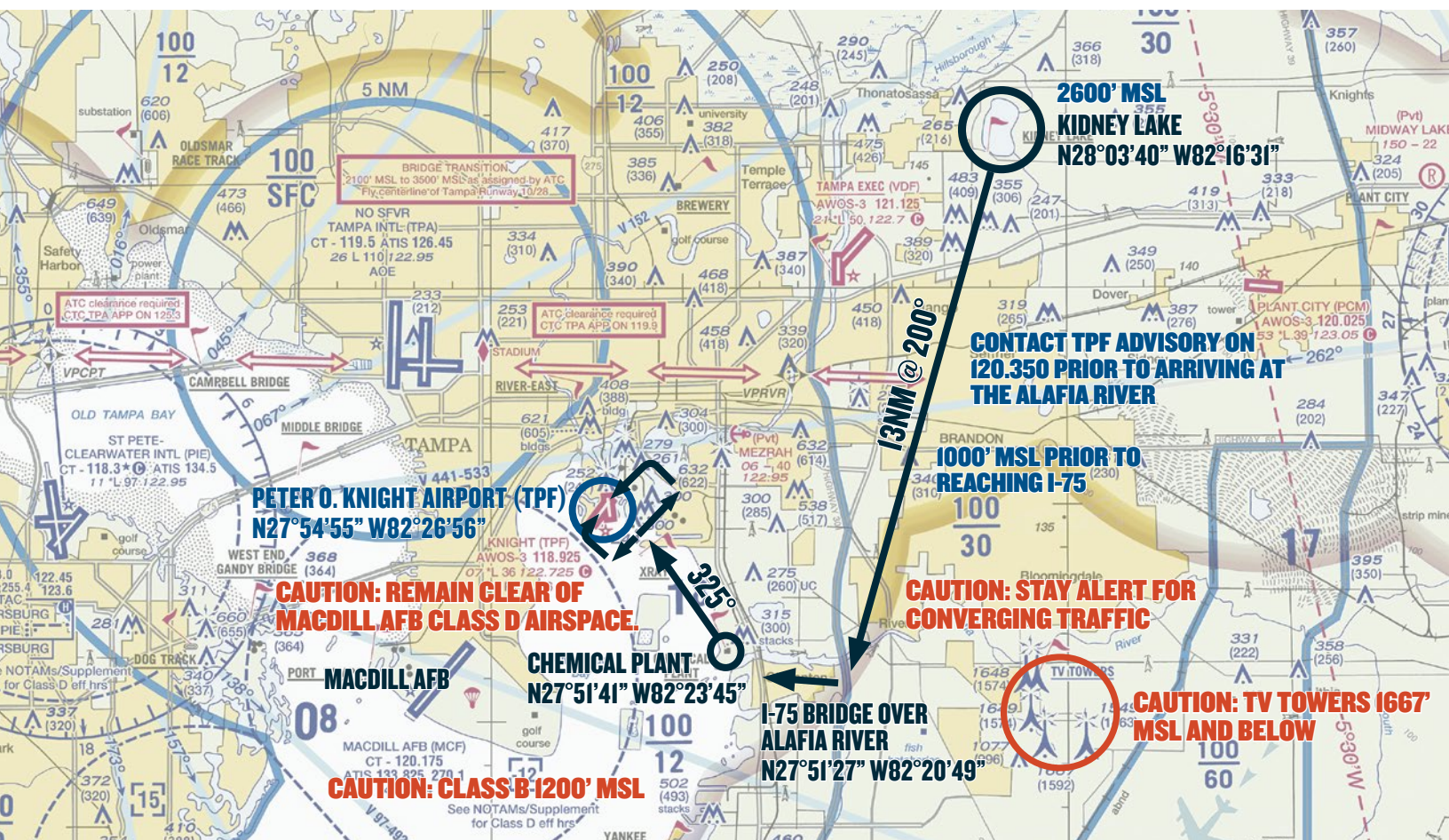
AirBoss (non-Federal) personnel will provide Airport ADVISORY service on 120.35 to aircraft operating at TPF during the procedures NOTAM effective times. Outside NOTAM times, or if unable to contact Advisory, contact TPF UNICOM on 122.725 and follow standard non-towered airport procedures.

**NOTE:** Advisory service does NOT constitute Air Traffic Control (ATC) Service, or ATC Clearance.



## VFR PROCEDURES

### ARRIVALS OVER KIDNEY LAKE



**AWOS: 118.925    TPF ADVISORY: 120.350    TPF UNICOM: 122.725    TAMPA APPROACH: 119.9 N & E: 119.65 S**

**CHECK PETER O. KNIGHT AWOS ON 118.925 AS SOON AS PRACTICAL.**

This procedure begins over Kidney Lake at **2600 feet MSL**. From Kidney Lake, proceed direct to where I-75 crosses the Alafia River; 13NM on an approximate heading of 200°.

**Caution: Stay alert for converging traffic and for east/west traffic enroute to/from Tampa International Airport.**

Descend to **1000 feet MSL** prior to reaching I-75 to avoid Tampa Class B Airspace. Begin descent at pilot's discretion.

Contact TPF Advisory on 120.350. when approximately 5 NM from the Alafia River. Example: *“TPF Advisory, Skyhawk 1234, 5 miles north of the Alafia River, inbound.”*

**Caution: Stay alert for converging traffic from the south.**

Cross the Alafia River east of the I-75 bridge, and then stay south of the Alafia River and continue west toward the chemical plant; 2.5 NM.

If traffic volume requires holding, fly the hold as depicted in the *TPF Hold Graphic* on pages 6 & 7. All aircraft should **fly right turns at 1000 feet MSL**. If in the hold, stay north of the Alafia River when inbound toward the chemical plant. When holding

is no longer required, aircraft should complete the hold and continue inbound from the chemical plant.

**Caution: Stay alert for traffic in the hold as well as traffic inbound south of the Alafia River.**

From the chemical plant, fly direct to Peter O. Knight Airport (TPF); 4 NM on an approximate heading of 318°. Begin descent to traffic pattern altitude at pilot's discretion.

**TPF TPA: 900 feet MSL**

**Caution: Do not confuse MacDill AFB with Peter O. Knight Airport (TPF) (See graphics on pages 5 & 6)**

Follow instructions from TPF Advisory on 120.350. Depending on wind conditions, expect to fly a left downwind for runway 22 or a right downwind for runway 4.

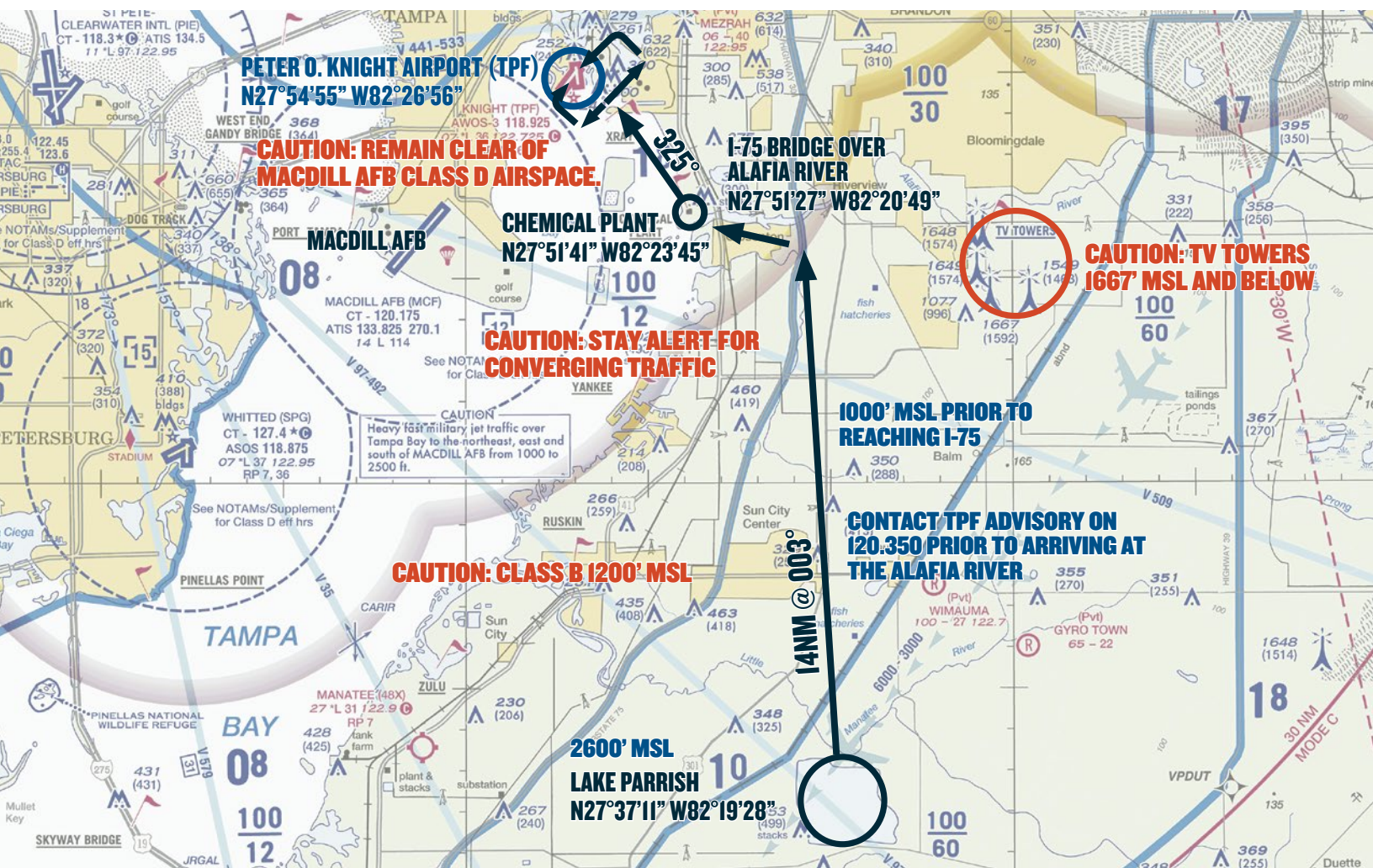
**Caution: Remain clear of MacDill AFB Class D Airspace.**

After landing, do not stop on the runway unless necessary. Exit the runway as quickly and as safely as possible. Keep moving and follow instructions from TPF Advisory on 120.350. Marshalls will direct aircraft to the parking areas.



# VFR PROCEDURES

## ARRIVALS OVER LAKE PARRISH



AWOS: 118.925    TPF ADVISORY: 120.350    TPF UNICOM: 122.725    TAMPA APPROACH: 119.9 N & E; 119.65 S

### CHECK PETER O. KNIGHT AWOS ON 118.925 AS SOON AS PRACTICAL.

This procedure begins over Lake Parrish at **2600 feet MSL**. From Lake Parrish, proceed direct to where I-75 crosses the Alafia River; 14NM on an approximate heading of 003°.

**Caution: Stay alert for converging traffic and from the North.**

Descend to **1000 feet MSL** prior to reaching I-75 to avoid Tampa Class B Airspace. Begin descent at pilot's discretion.

Contact TPF Advisory on 120.350. when approximately 5 NM from the Alafia River. Example: "TPF Advisory, Skyhawk 1234, 5 miles south of the Alafia River, inbound."

Stay south of the Alafia River and continue west toward the chemical plant; 2.5 NM.

If traffic volume requires holding, fly the hold as depicted in the *TPF Hold Graphic* on pages 6 & 7. All aircraft should fly **right turns** at **1000 feet MSL**. If in the hold, stay north of the Alafia River when inbound toward the chemical plant. When holding is no longer required, aircraft should complete the hold and continue inbound toward the chemical plant.

**Caution: Stay alert for traffic in the hold as well as traffic inbound south of the Alafia River.**

From the chemical plant, fly direct to Peter O. Knight Airport (TPF); 4 NM on an approximate heading of 318°. Begin descent to traffic pattern altitude at pilot's discretion.

**TPF TPA: 900 feet MSL**

**Caution: Do not confuse MacDill AFB with Peter O. Knight Airport (TPF) (See graphics on pages 5 & 6)**

Follow instructions from TPF Advisory on 120.350. Depending on wind conditions, expect to fly a left downwind for runway 22 or a right downwind for runway 4.

**Caution: Remain clear of MacDill AFB Class D Airspace.**

After landing, do not stop on the runway unless necessary. Exit the runway as quickly and as safely as possible. Keep moving and follow instructions from TPF Advisory on 120.350. Marshallsers will direct aircraft to the parking areas.



## APPROACHING I-75 BRIDGE OVER ALAFIA RIVER FROM KIDNEY LAKE (NORTH)



AWOS: 118.925 TPF ADVISORY: 120.350 TPF UNICOM: 122.725 TAMPA APPROACH: 119.9 N & E; 119.65 S

## APPROACHING I-75 BRIDGE OVER ALAFIA RIVER FROM LAKE PARRISH (SOUTH)



AWOS: 118.925 TPF ADVISORY: 120.350 TPF UNICOM: 122.725 TAMPA APPROACH: 119.9 N & E; 119.65 S



# I-75 BRIDGE TO CHEMICAL PLANT



AWOS: 118.925 TPF ADVISORY: 120.350 TPF UNICOM: 122.725 TAMPA APPROACH: 119.9 N & E; 119.65 S

# CHEMICAL PLANT TO PETER O. KNIGHT AIRPORT (TPF)



AWOS: 118.925 TPF ADVISORY: 120.350 TPF UNICOM: 122.725 TAMPA APPROACH: 119.9 N & E; 119.65 S

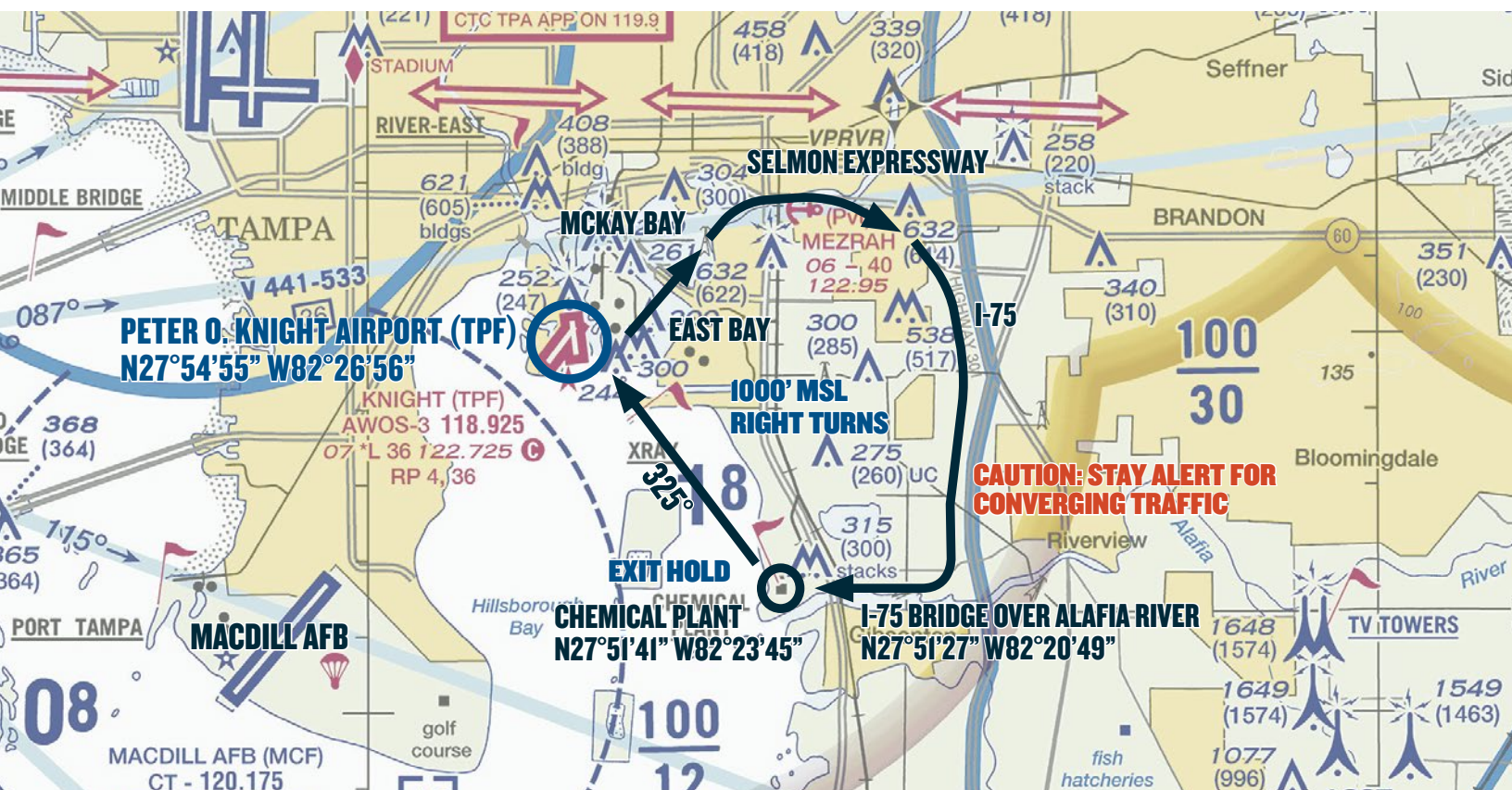


# CHEMICAL PLANT TO PETER O. KNIGHT AIRPORT (TPF)



AWOS: 118.925 TPF ADVISORY: 120.350 TPF UNICOM: 122.725 TAMPA APPROACH: 119.9 N & E; 119.65 S

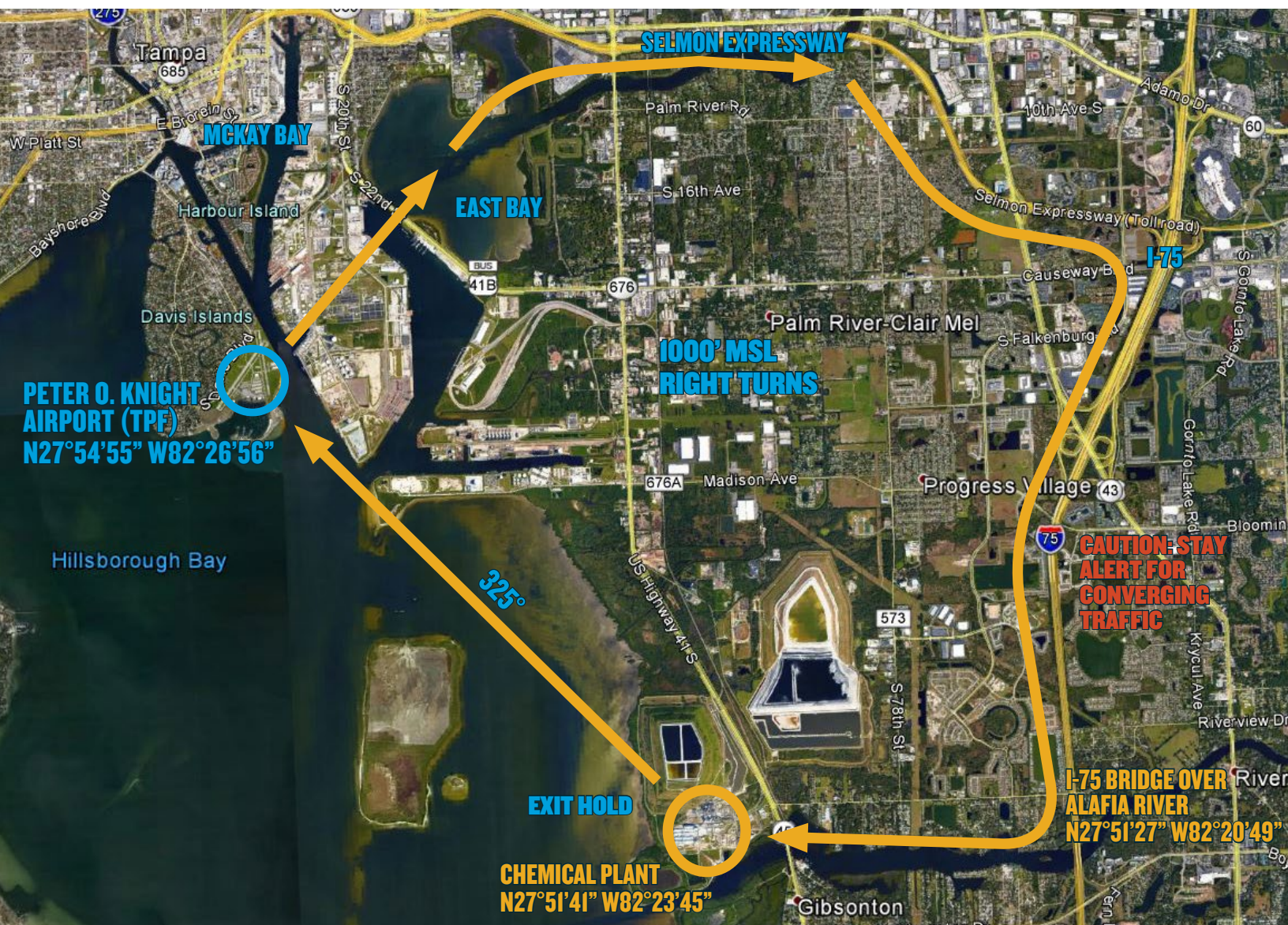
## TPF VFR HOLD



AWOS: 118.925 TPF ADVISORY: 120.350 TPF UNICOM: 122.725 TAMPA APPROACH: 119.9 N & E; 119.65 S



# TPF VFR HOLD



AWOS: 118.925 TPF ADVISORY: 120.350 TPF UNICOM: 122.725 TAMPA APPROACH: 119.9 N & E; 119.65 S

## IFR DELAYS

There is no Special Traffic Management Program for this event. No arrival or departure reservations are required. IFR separation requirements may cause delays when arrival rates exceed airport capacity. Pilots on an IFR flight plan should be prepared for potential holding. IFR flight plans to Peter O. Knight Airport should be filed at **least 2 hours** prior to proposed departure time. **VFR flight on designated arrival routes is highly recommended if practical.**

## AIRPORT CLOSURE

Peter O. Knight Airport will be closed during the following times during the AOPA Fly-In:

7:00 PM EDT Thursday, October 26, 2017 until 7:00 AM EDT Friday, October 27, 2017

7:00 PM EDT Friday, October 27, 2017 until 7:00 AM EDT Saturday, October 28, 2017

7:00 PM EDT Saturday, October 28, 2017 until 7:00 AM EDT Sunday, October 29, 2017

## LOCAL TRAINING AND PRACTICE APPROACHES

Local traffic pattern, closed traffic training, and practice instrument approaches **will not be available** at Peter O. Knight Airport (TPF) during the AOPA Fly-In.

## NO RADIO AIRCRAFT

Due to high density traffic, aircraft operations without a radio are not recommended.

## STUDENT PILOTS

Due to high density traffic, solo student pilot operations are not recommended.

## CAUTIONS

Parachute/gliders activity near Zephyrhills Airport (ZPH). Stay west of airport.

Parachute/gliders activity near Blackwater Creek (9FD2).

Ship traffic and towers in the channel east of approach end of runway 22.

**Class B Airspace;** Tampa International Airport (TPA); 5 NM northwest of TPF

**Class D Airspace;** MacDill Air Force Base (MCF); 1/2 NM southwest of the threshold of runway 4 at TPF.

**Class C Airspace;** Sarasota/Bradenton International Airport (SRQ); 32 NM south/southwest of TPF.

**Class D Airspace;** Lakeland Linder Regional Airport (LAL); 23 NM east/northeast of TPF.

**Class B Airspace;** Orlando International Airport (MCO); 68 NM northeast of TPF.

Possible lengthy delays associated with heavy arrival and departure times. Heavy arrivals expected 8:00 AM—11:00 AM Friday and Saturday. Heavy departures expected 3:00 PM—6:00 PM on Saturday.

Numerous special use airspace near Peter O. Knight Airport (TPF).



# FREQUENCY & WAYPOINT INFORMATION

## ENROUTE FREQUENCIES

Tampa Approach (North)	119.9
Tampa Approach (East)	119.9
Tampa Approach (South)	119.65

## PETER O. KNIGHT AIRPORT FREQUENCIES

Peter O. Knight AWOS	118.925
AWOS telephone number	813-251-6824
TPF Advisory	120.350
TPF UNICOM	122.725
Tampa Clearance Delivery	119.8
Tampa Approach/Departure	119.9

## SPECIFIC LATITUDE/LONGITUDE COORDINATES

### Arrivals Over Kidney Lake

Kidney Lake	N28°03'40"/W82°16'31"
I-75 Bridge over Alafia River	N27°51'27"/W82°20'49"
Chemical Plant	N27°51'41"/W82°23'45"
Peter O. Knight Airport (TPF)	N27°54'55"/W82°26'56"

### Arrivals Over Lake Parrish

Lake Parrish	N27°37'11"/W82°19'28"
I-75 Bridge over Alafia River	N27°51'27"/W82°20'49"
Chemical Plant	N27°51'41"/W82°23'45"
Peter O. Knight Airport (TPF)	N27°54'55"/W82°26'56"

## DEGREES, MINUTES, SECONDS CONVERTED TO DECIMAL DEGREES

### Arrivals Over Kidney Lake

	Latitude	Longitude
Kidney Lake	28.06111111°	82.2752778°
I-75 Bridge over Alafia River	27.8575°	82.34694444°
Chemical Plant	27.8613889°	82.39583333°
Peter O. Knight Airport (TPF)	27.9152778°	82.44888889°

### Arrivals Over Lake Parrish

Lake Parrish	27.61972222°	82.32444444°
I-75 Bridge over Alafia River	27.8575°	82.34694444°
Chemical Plant	27.8613889°	82.39583333°
Peter O. Knight Airport (TPF)	27.9152778°	82.44888889°

# GENERAL INFORMATION

## PETER O. KNIGHT AIRPORT (TPF)



### PARKING AREAS

- When operating in the parking areas, pilots are encouraged to be extra alert for taxiing aircraft, aircraft with engine(s) running, and vehicle/pedestrian traffic.
- Marshalls will be assisting aircraft to and from parking areas and run-up areas.
- For safety reasons, high RPM engine running is prohibited in designated parking areas. For departure, it is recommended that pilots conduct their run-up procedures in queue if practical.
- Please review the parking map prior to landing and departing.

### VEHICULAR TRAFFIC

Vehicles are not allowed on ramps except those belonging to airport operators and tenants, and exhibitors participating in the AOPA Tampa Fly-In.

### PRE-FLIGHT PLANNING

- Please ensure that you have reviewed the special flight information, departure procedures, and temporary taxi procedures prior to engine start.
- High density traffic is expected Friday and Saturday morning. Consider arriving during off-peak hours.



# DEPARTURE PROCEDURES

## PETER O. KNIGHT AIRPORT (TPF)

### IFR DEPARTURES

Follow marshaller's instructions to taxi to the nearest designated IFR departure holding area. IFR departures should obtain a clearance from **Tampa Clearance Delivery on 119.8. DO NOT CONTACT TAMPA CLEARANCE DELIVERY UNTIL YOU ARE PREPARED TO DEPART.**

### VFR DEPARTURES

**VFR Flight Following:** Pilots wanting VFR flight-following should make the request to the appropriate ATC facility when clear of Tampa International Airport Class B airspace. *VFR Traffic Advisories/Flight Following will be provided on a workload-permitting basis only.*

**Prior to Start-up:** Please ensure that you have reviewed the special flight information, departure procedures, and temporary taxi procedures prior to engine start. Check AWOS on **118.925**.

**Engine Start:** Locate a marshaller to monitor engine start.

**Taxi:** Follow instructions from marshalls to taxi for departure.

**Run-up:** If practical, it is recommended that you conduct your run-up while in queue for departure. Please consider propeller blast during your run-up.

**MONITOR TPF Advisory on 120.350** during taxi and be prepared for immediate departure when number one for take-off.

#### Departure:

**Departing Runway 22:** After takeoff, turn left to a heading of 090° **as soon as practical** and **remain clear of Class B and Class D** airspace. Turn on course when clear of the Class B shelf.

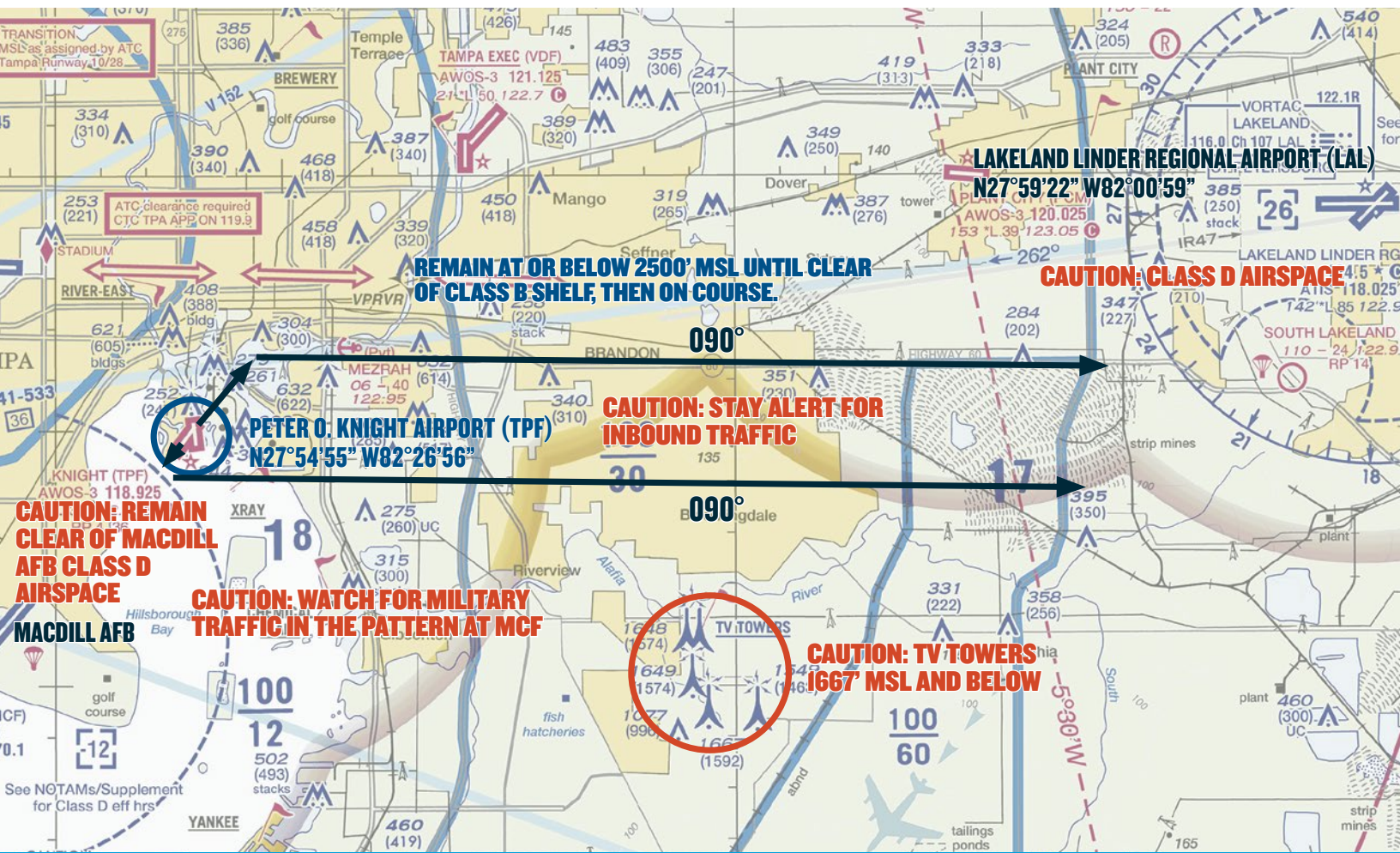
**Departing Runway 4:** After takeoff, turn right to a heading of 090° **as soon as practical** and **remain clear of Class B** airspace. Turn on course when clear of the Class B shelf.

**Caution: TV Towers at 1667 feet MSL and below in the area.**

**Caution: Military traffic in the pattern at MacDill AFB.**

# VFR DEPARTURE PROCEDURES

## PETER O. KNIGHT AIRPORT (TPF)

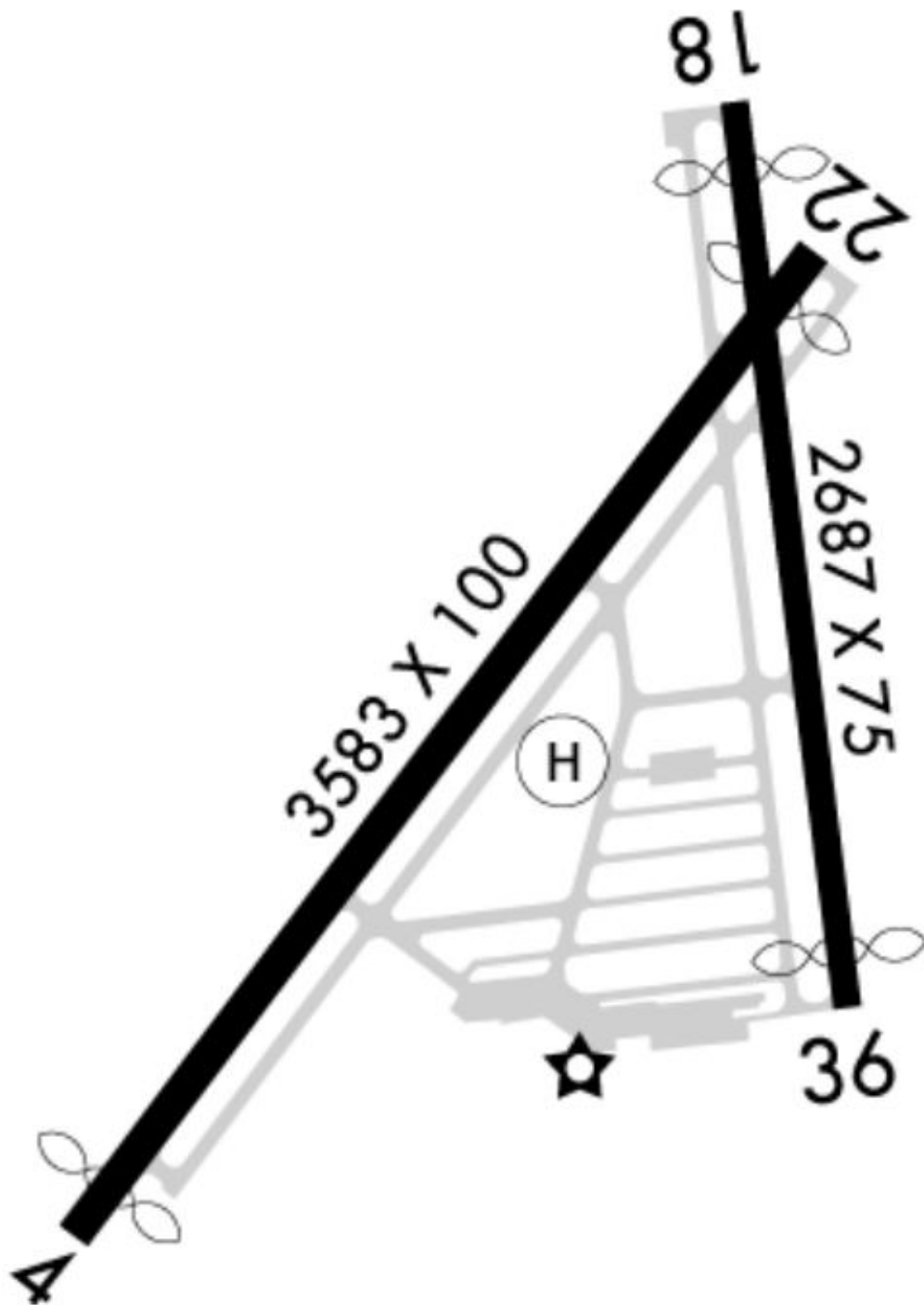


AWOS: 118.925    TPF ADVISORY: 120.350    TPF UNICOM: 122.725    TAMPA APPROACH: 119.9 N & E; 119.65 S



# AIRPORT DIAGRAM

PETER O. KNIGHT AIRPORT (TPF)



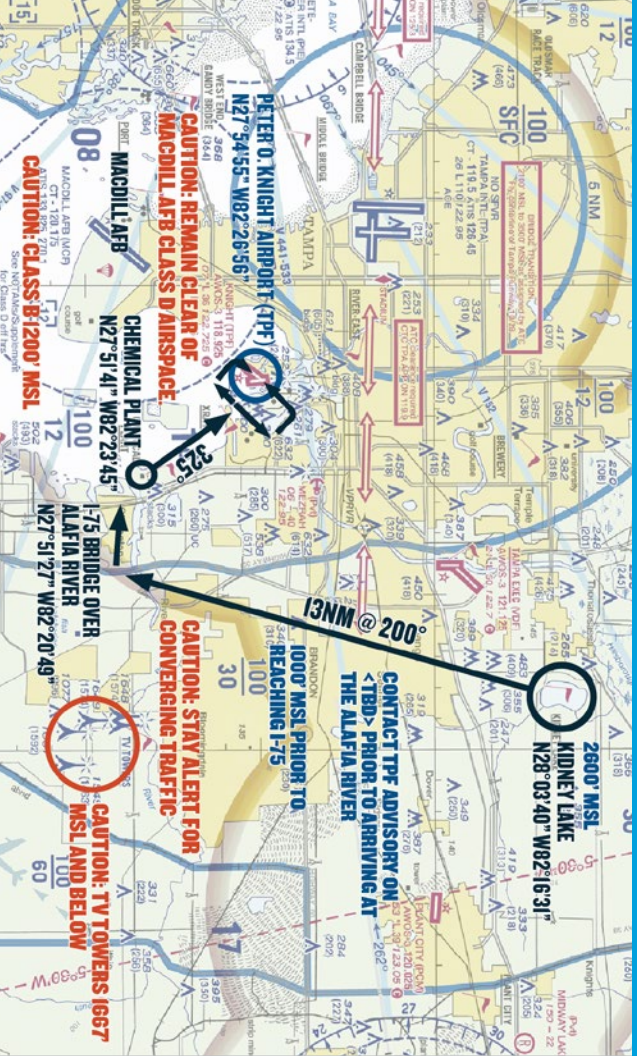
AWOS: 118.925   TPF ADVISORY: 120.350   TPF UNICOM: 122.725   TAMPA APPROACH: 119.9 N & E; 119.65 S



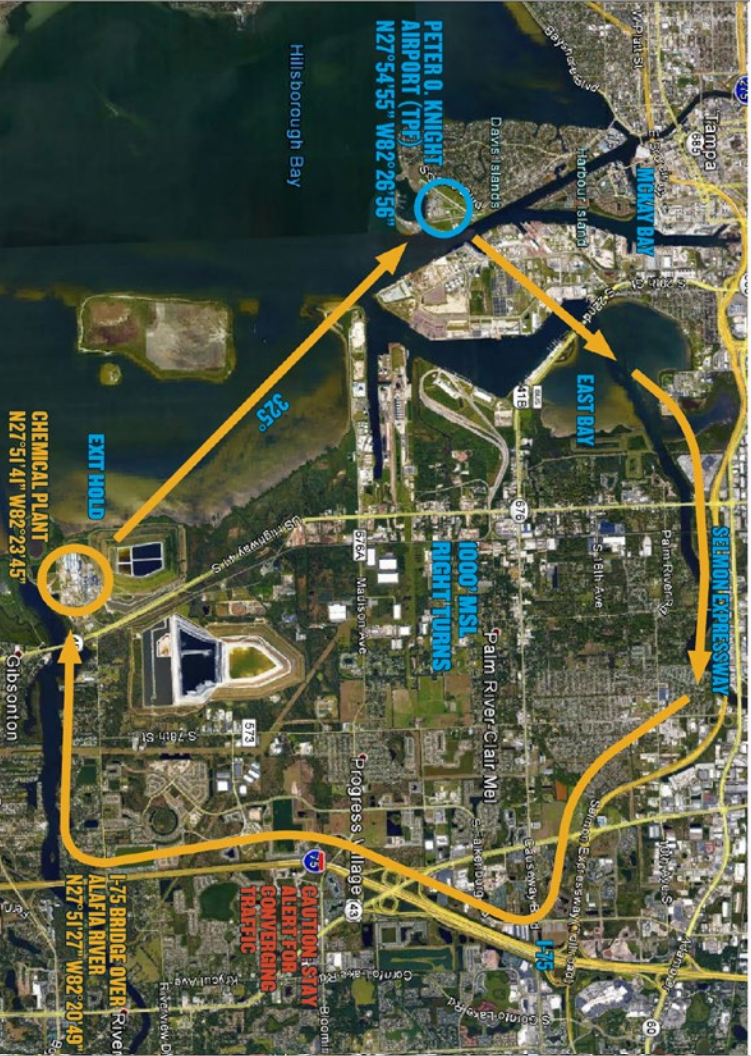
# VFR PROCEDURES

## ARRIVALS OVER KIDNEY LAKE

AWOS: 118.925 TPF ADVISORY: 120.350 TPF UNICOM: 122.725 TAMPA APPROACH: 119.9 N & E: 119.655



# TPF VFR HOLD



# VFR PROCEDURES

## ARRIVALS OVER KIDNEY LAKE

AWOS: 118.925 TPF ADVISORY: 120.350 TPF UNICOM: 122.725 TAMPA APPROACH: 119.9 N & E: 119.655

CHECK PETER O. KNIGHT AWOS ON 118.925 AS SOON AS PRACTICAL.

This procedure begins over Kidney Lake at 2600 feet MSL. From Kidney Lake, proceed direct to where I-75 crosses the Alafia River; 13NM on an approximate heading of 200°.

**Caution: Stay alert for converging traffic and for east/west traffic enroute to/from TPA.**

Descend to 1000 feet MSL prior to reaching I-75 to avoid Tampa Class B Airspace. Begin descent at pilot's discretion.

Contact TPF Advisory on 120.350, when approximately 5 NM from the Alafia River and state position.

**Caution: Stay alert for converging traffic from south.**

Cross the Alafia River east of I-75 bridge, and then stay south of the Alafia River and continue west toward the chemical plant; 2.5 NM.

If traffic volume requires holding, fly the hold as depicted in the *TPF Hold Graphic* on pages 6 & 7. All aircraft should fly right turns at 1000 feet MSL. If in the hold, stay north of the Alafia



AWOS: 118.925 TPF ADVISORY: 120.350 TPF UNICOM: 122.725 TAMPA APPROACH: 119.9 N & E: 119.655

River when inbound toward the chemical plant. When holding is no longer required, complete the hold and continue inbound from the chemical plant.

**Caution: Stay alert for traffic in the hold and traffic inbound south of the Alafia River.**

From the chemical plant, fly direct to Peter O. Knight Airport (TPF); 4 NM on an approximate heading of 318°. Begin descent to traffic pattern altitude at pilot's discretion.

**TPF TPA: 900 feet MSL**

**Caution: Do not confuse MacDill AFB with Peter O. Knight Airport (TPF) (See graphics; pages 5 & 6)**

Follow instructions from TPF Advisory on 120.350. Depending on wind conditions, expect to fly a left downwind for runway 22 or a right downwind for runway 4.

**Caution: Remain clear of MacDill AFB Class D Airspace.**

After landing, do not stop on the runway unless necessary. Exit the runway as quickly and as safely as possible. Keep moving and follow instructions from TPF Advisory on 120.350. Marshalls will direct aircraft to the parking areas.

AWOS: 118.925 TPF ADVISORY: 120.350 TPF UNICOM: 122.725 TAMPA APPROACH: 119.9 N & E: 119.655



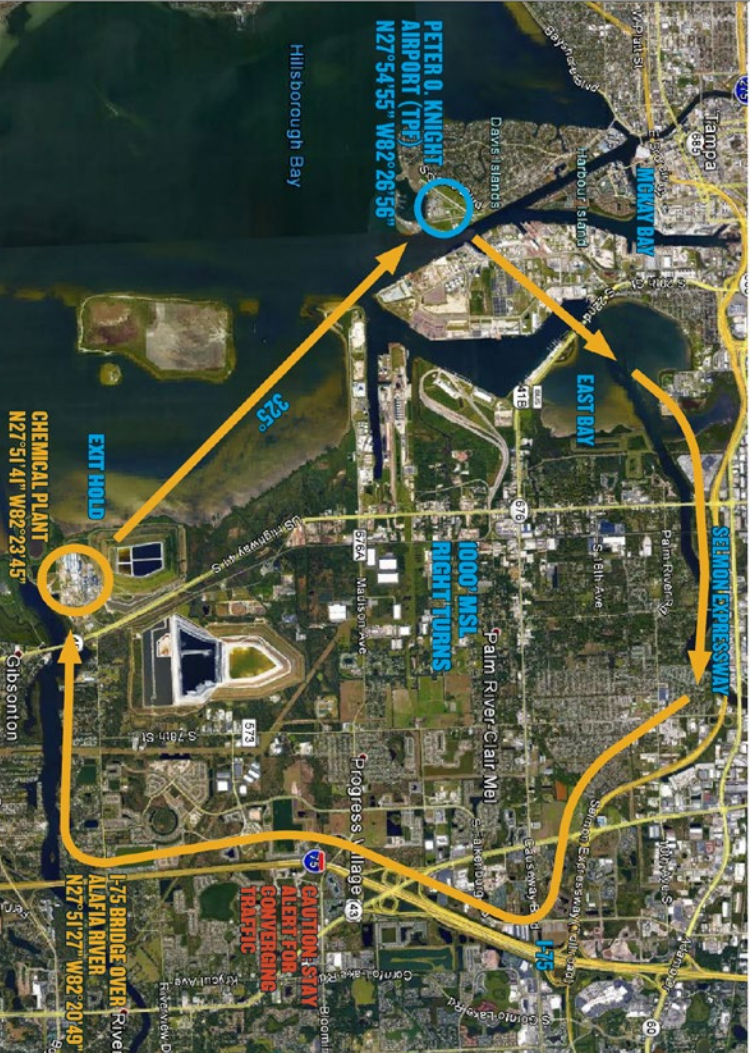
# VFR PROCEDURES

## ARRIVALS OVER LAKE PARRISH

AWOS: 118.925 TPF ADVISORY: 120.350 TPF UNICOM: 122.725 TAMPA APPROACH: 119.9 N & E: 119.655



# TPF VFR HOLD



# VFR PROCEDURES

## ARRIVALS OVER LAKE PARRISH

AWOS: 118.925 TPF ADVISORY: 120.350 TPF UNICOM: 122.725 TAMPA APPROACH: 119.9 N & E: 119.655

CHECK PETER O. KNIGHT AWOS ON 118.925 AS SOON AS PRACTICAL.

This procedure begins over Lake Parrish at 2600 feet MSL. From Lake Parrish, proceed direct to where I-75 crosses the Alafia River; 14NM on an approximate heading of 003°.

**Caution: Stay alert for converging traffic and from the North.**

Descend to 1000 feet MSL prior to reaching I-75 to avoid Tampa Class B Airspace. Begin descent at pilot's discretion.

Contact TPF Advisory on 120.350, when approximately 5 NM from the Alafia River and state position.

Stay south of the Alafia River and continue west toward the chemical plant; 2.5 NM.

If traffic volume requires holding, fly the hold as depicted in the *TPF Hold Graphic* on pages 6 & 7. All aircraft should fly **right turns at 1000 feet MSL**. If in the hold, stay north of the Alafia River when inbound toward the chemical plant. When holding

is no longer required, complete the hold and continue inbound from the chemical plant.

**Caution: Stay alert for traffic in the hold and traffic inbound south of the Alafia River.**

From the chemical plant, fly direct to Peter O. Knight Airport (TPF); 4 NM on an approximate heading of 318°. Begin descent to traffic pattern altitude at pilot's discretion.

**TPF TPA: 900 feet MSL**

**Caution: Do not confuse MacDill AFB with Peter O. Knight Airport (TPF) (See graphics; pages 5 & 6)**

Follow instructions from TPF Advisory on 120.350. Depending on wind conditions, expect to fly a left downwind for runway 22 or a right downwind for runway 4.

**Caution: Remain clear of MacDill AFB Class D Airspace.**

After landing, do not stop on the runway unless necessary. Exit the runway as quickly and as safely as possible. Keep moving and follow instructions from TPF Advisory on 120.350. Marshalls will direct aircraft to the parking areas.





# ADDITIONAL INFORMATION

## TAMPA, FL (TPF) PILOT INFORMATION PACKET

### AOPA FLY-IN HOST FBO AT PETER O. KNIGHT AIRPORT (TPF)

The AOPA Fly-In Host FBO at Peter O. Knight Airport (TPF) is Atlas Aviation. We thank them for their support, enthusiasm, and participation in the AOPA Fly-In at TPF.



#### Atlas Aviation

825 Seven Avenue  
Tampa, FL 33606

Hours of operation:  
Monday-Sunday 7:00 AM – 7:00 PM local

Phone: 813-251-1752

Fax: 813-251-0731

Email: <http://atlasaviationinc.com/contact-us>

Website: <http://atlasaviationinc.com/>

### PARKING AND SERVICE DETAILS

Fuel/oil orders will be taken at the time your aircraft is parked. If you need either, please make sure to make the request at that time. Orders made at a later time might delay your departure. Credit card information will be requested at the time the order is placed. Receipts if requested will be emailed or available in the FBO. Order slip will be attached to propeller. If you are uncomfortable providing credit card information on the ramp, you can provide the information directly to the FBO's front desk.

### CHOCKS AND TIE DOWNS

Chocks will be available in **limited quantities** so we highly recommend that you bring your own. Tie down hooks are scattered on the ramp and parking on a tie down space is unlikely. It is recommended that you bring tie-downs and anchors for any additional aircraft securing needs.

### CAMPING

Aircraft camping will be permitted at Peter O. Knight Airport (TPF) from 12:00 Noon on Thursday, October 26, 2017 until 12:00 Noon on Sunday, October 29, 2017. Space is limited and will be available on a first-come, first-served basis. If you plan to camp, you must RSVP ahead of time. A confirmation will be sent with additional information. Camping aircraft will be requested to prominently display the letter C in the windshield. **See the AOPA website for more information.**

### RENTAL CAR AVAILABILITY



Phone: 866-315-9155



## OTHER AREA AIRPORTS

There are several public use airports that are within a one-hour drive of Peter O. Knight Airport (TPF). You might elect to use one of these airports in the event aircraft parking reaches capacity at TPF. Rental cars are also available at many of these airports.



**TAMPA EXECUTIVE AIRPORT (VDF)** is located 8 NM miles northeast of Peter O. Knight Airport (TPF) and is approximately a 25-minute drive to TPF. Tampa Executive Airport has two hard surface runways. 5/23 is 5000 X 100. 18/36 is 3259 X 75. The airspace is Class G and underlies Tampa International Airport Class B airspace. Contact the FBO to determine rental car availability at 813-626-1515.



**TAMPA INTERNATIONAL AIRPORT (TPA)** is located 6 NM northwest of Peter O. Knight Airport (TPF) and is approximately a 25-minute drive to TPF. Tampa International Airport has three hard surface runways. 1L/19R is 11002 X 150. 1R/19L is 8300 X 150. 10/28 is 6999 X 150. The airspace is Class B. Contact Sheltair Aviation at 813-319-8000 or Signature Flight Support at 813-870-3813 for rental car availability.



**ST PETE-CLEARWATER INTERNATIONAL AIRPORT (PIE)** is located 13 NM west of Peter O. Knight Airport (TPF) and is approximately a 30-minute drive to TPF. St Pete-Clearwater International Airport has two hard surface runways. 4/22 is 5903 X 150. 18/36 is 9730 X 150. The airspace is Class D and underlies Tampa International Class B airspace. Rental cars available through Enterprise, National, and Alamo at 866-315-9155.

Also available: Avis, Budget, Dollar, and Hertz.



**ALBERT WHITTED AIRPORT (SPG)** is located 13 NM southwest of Peter O. Knight Airport (TPF) and is approximately a 37-minute drive to TPF. Albert Whitted Airport has two hard surface runways. 7/25 is 3677 X 75. 18/36 is 2864 X 150. The airspace is Class D and underlies Tampa International Class B airspace.

Rental cars are available through Enterprise at 866-315-9155. Also available: Avis.



**PLANT CITY AIRPORT (PCM)** is located 16 NM northeast of Peter O. Knight Airport (TPF) and is approximately a 35-minute drive to TPF. Plant City Airport has one hard surface runway. 10/28 is 3950 X 75. The airspace is Class G and underlies Tampa International Class B airspace. Contact the FBO for rental car availability at 813-752-4710.



**LAKELAND LINDER REGIONAL AIRPORT (LAL)** is located 23 NM northeast of Peter O. Knight Airport (TPF) and is approximately a 40-minute drive to TPF. Lakeland Linder Regional Airport has two hard surface runways. 5/23 is 5005 X 150. 9/27 is 8499 X 150. The airspace is

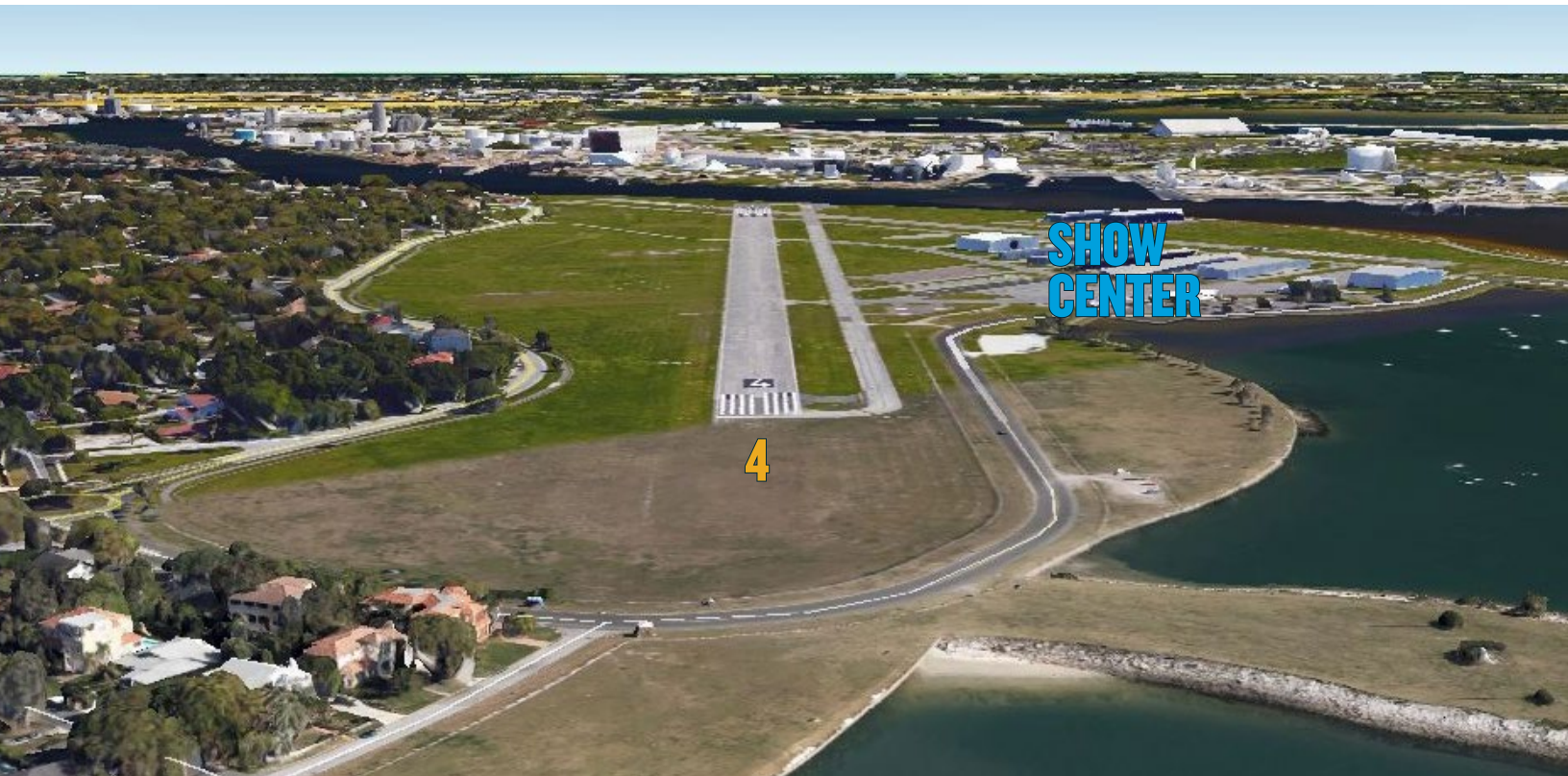
Class D. Rental cars are available through Enterprise at 866-315-9155. Also available: Hertz.

**SEE AND  
BE SEEN!**  
REMEMBER, LIGHTS  
ON FOR SAFETY!



## LANDING RUNWAY 4

PETER O. KNIGHT AIRPORT (TPF)



AWOS: 118.925 TPF ADVISORY: 120.350 TPF UNICOM: 122.725 TAMPA APPROACH: 119.9 N & E; 119.65 S

## LANDING RUNWAY 22

PETER O. KNIGHT AIRPORT (TPF)



AWOS: 118.925 TPF ADVISORY: 120.350 TPF UNICOM: 122.725 TAMPA APPROACH: 119.9 N & E; 119.65 S



## TAMPA EXECUTIVE AIRPORT (VDF)

### FREQUENCIES

TAMPA APPROACH/DEPARTURE 119.9

WX 121.125T (813-630-0924)

CTAF 122.7

UNICOM 122.7



## TAMPA INTERNATIONAL AIRPORT (TPA)

### FREQUENCIES

TAMPA APPROACH/DEPARTURE 118.15

TAMPA APPROACH/DEPARTURE 118.8

TAMPA APPROACH/DEPARTURE CLASS B 119.65

WX .0T (813.873.7228)

CLEARANCE DELIVERY 133.6

CLASS B 119.9

CLASS B 125.3

D-ATIS 126.45

D-ATIS 128.475

EMERGENCY 121.5

FINAL-CTL IC 118.5

GROUND CONTROL 121.7

GND/S 121.35

TOWER 119.5

TOWER(S) 119.05

UNICOM 122.95





# ST PETE-CLEARWATER INTERNATIONAL AIRPORT (PIE)

## FREQUENCIES

TAMPA APPROACH/DEPARTURE	125.3
PIE WX	.OT (727-531-3456)
PIE ATIS	134.5
PIE CLEARANCE DELIVERY	120.6
PIE CTAF	118.3
PIE GROUND CONTROL	121.9
TOWER	118.3
TOWER(S)	128.4
UNICOM	122.95



# ALBERT WHITTED AIRPORT (SPG)

## FREQUENCIES

TAMPA APPROACH/DEPARTURE EAST	119.65
TAMPA APPROACH/DEPARTURE WEST	125.3
SPG WX	118.875T (727-821-4334)
SPG CTAF	127.4
SPG GROUND CONTROL	121.8
SPG TOWER	127.4
UNICOM	122.95





## PLANT CITY AIRPORT (PCM)

### FREQUENCIES

TAMPA APPROACH/  
DEPARTURE 120.65

TAMPA APPROACH/  
DEPARTURE(S) 119.9

WX 120.025T (813-764-8259)

CTAF 123.05

UNICOM 123.05



## LAKELAND LINDER REGIONAL AIRPORT (LAL)

### FREQUENCIES

TAMPA APPROACH/  
DEPARTURE 120.65

TAMPA APPROACH/  
DEPARTURE(S) 119.9

LAL ATIS 118.025

LAL WX 118.025T (863-834-2030)

LAL CTAF 124.5

LAL EMERGENCY 121.5

LAL GROUND CONTROL 121.4

LAL TOWER 124.5

UNICOM 122.95







# FLY-IN

TAMPA, FL  
10/27  
10/28  
17

PRINT & PLACE GRAPHIC IN AIRCRAFT  
WINDSHIELD

