



PILOT INFORMATION PACKET

Aircraft Owners and Pilots Association (AOPA) Fly-In
Tullahoma Regional Airport (THA)—Tullahoma, TN

SPECIAL FLIGHT PROCEDURES

EFFECTIVE 12:00 Noon CDT Until 6:00PM CDT Friday, October 9, 2015
And 7:00AM CDT Until 6:00 PM CDT Saturday, October 10, 2015



TABLE OF CONTENTS

NOTAM—Temporary VFR Procedures	1-13
VFR Arrivals Overview	01
VFR Procedures: Arrivals over Warren County Airport (RNC).....	02
VFR Holding Pattern: I-24 Hold.....	03
VFR Holding Pattern: Love’s Truck Stop on I-24	04
VFR Holding Pattern: Semi Cloverleaf at Beechgrove on I-24	04
VFR Procedures: Arrivals over Ellington Airport (LUG)	05
VFR Holding Pattern: Route 16 Hold	06
VFR Holding Pattern: Junkyard on Route 16	07
VFR Holding Pattern: Shelbyville Ballfields on Route 16	07
IFR Arrivals.....	08
Temporary Airport Closure for Aerobatic Demonstration	08
Local Training and Practice.....	08
Cautions	08
Enroute Frequency Overview	09
Tulahoma Regional Airport Frequencies.....	10
Specific Latitude/Longitude Coordinates	10
General Information	11
Parking Areas.....	11
Vehicular Traffic	11
Preflight Planning.....	11
IFR Departures.....	12
VFR Departures	12
VFR Flight Following	12
Prior to Start-up.....	12
Engine Start.....	12
Run up	12
Departure.....	12
Airport Diagram.....	13
Additional Information	14-15
Host FBO Information	14
Fuel Discount.....	14
Parking and Service Details	14
Chocks and Tie Downs	14
After-Hours Departures.....	14
Camping.....	15
DTC Flight Planning.....	15
Rental Car Availability.....	15

TABLE OF CONTENTS CONTINUED

Other Area Airports 15-16

 Bomar Field—Shelbyville Municipal Airport (SYI) 15

 Ellington Airport (LUG) 15

 Warren County Memorial Airport (RNC)..... 15

 Winchester Municipal Airport (BGF)..... 15

 Franklin County Airport (UOS)..... 16

 Murfreesboro Municipal Airport (MBT)..... 16

Additional Graphics..... 17-22

 Approaching Tullahoma Regional Airport from Shelbyville17

 Landing Runway 24 at Tullahoma Regional Airport17

 Landing Runway 6 at Tullahoma Regional Airport..... 18

 Landing Runway 18 at Tullahoma Regional Airport..... 18

 Landing Runway 36 at Tullahoma Regional Airport 19

 Shelbyville Municipal Airport (SYI))—Satellite View with Frequencies.....20

 Ellington Airport (LUG))—Satellite View with Frequencies.....20

 Warren County Memorial Airport (RNC)—Satellite View with Frequencies..... 21

 Winchester Municipal Airport (BGF)—Satellite View with Frequencies..... 21

 Murfreesboro Municipal Airport (MBT)—Satellite View with Frequencies.....22

 Franklin County Airport (UOS)—Satellite View with Frequencies.....22

AOPA Fly-In Windshield Graphic—Printable23

Kneeboard Quick Reference Graphics..... 24-25

 VFR Arrivals: Warren County Airport (RNC) & I-24 Hold.....24

 VFR Arrivals: Ellington Airport (LUG) & Route 16 Hold25

VFR ARRIVALS OVERVIEW



TEMPORARY VFR PROCEDURES

Specific procedures contained within this NOTAM may be revised at the time of the event. Pilots are urged to review all applicable NOTAMs and arrival/departure procedures prior to conducting a flight to Tullahoma Regional Airport. Users are encouraged to check NOTAMs frequently to verify they possess the most current revisions. This NOTAM does not supersede restrictions pertaining to the use of airspace contained in FDC NOTAMS.

All VFR arrivals must begin over Warren County Airport (RNC); 27 nautical miles northeast of Tullahoma Regional Airport (THA) or Ellington Airport (LUG), 28 nautical miles west/northwest of Tullahoma Regional Airport (THA).

TULLAHOMA ADVISORY CONTROL: 118.7

AirBoss will be operating an advisory service on 118.7 during the effective hours of the NOTAM. Non-federal controllers will be providing advisories to aircraft operating on the surface and to and from Tullahoma Regional Airport (THA) to ensure a constant and even flow of aircraft. Follow standard non-towered airport operations all other times.

Pilots should communicate on 118.7 during effective hours of NOTAM. If unable to contact Tullahoma Advisory on 118.7, broadcast position and intentions on Tullahoma UNICOM 123.0.

VFR PROCEDURES: ARRIVALS OVER WARREN COUNTY AIRPORT (RNC)



AWOS: 128.325

THA ADVISORY: 118.7

THA UNICOM: 123.00

Check Tullahoma AWOS on 128.325 as soon as practical.

This arrival procedure begins over Warren County Memorial Airport (RNC). There are two airspeeds and two altitudes for this arrival route. Slower aircraft should reduce speed to 95 knots or less and maintain 3,000 feet MSL prior to reaching RNC. Faster aircraft should reduce speed to 135 knots and maintain 3,500 feet MSL prior to reaching RNC.

Caution: Stay alert for converging traffic. Monitor Warren County Memorial Airport UNICOM 122.8 if practical.

Pilots should contact Memphis Center on 128.15 well in advance of arriving over Warren County Memorial Airport (RNC) to assist with sequencing and reduce congestion. Pilots not receiving advisory services from Memphis Center should announce position over Shelbyville Municipal Airport (SYI) on

the Tullahoma Advisory frequency 118.7. Follow instructions from Tullahoma Advisory. Expect radar services to be terminated prior to reaching the I-24 Hold.

Caution: Stay alert for converging traffic.

Proceed from Warren County Memorial Airport (RNC) to Shelbyville Municipal Airport (SYI). In the event traffic volume requires holding, follow the holding procedure as depicted in the *I-24 Hold graphic*. All aircraft should fly right turns. Slower aircraft should fly 95 knots/3,000 feet MSL and faster aircraft should fly 135 knots/3,500 feet MSL. Monitor Tullahoma Advisory on 118.7 for information on when to depart the hold.

When holding is no longer required, complete the hold and return to the inbound route approximately one nautical mile south of the semi-cloverleaf at Beechgrove, TN and continue toward Shelbyville Municipal Airport (SYI).

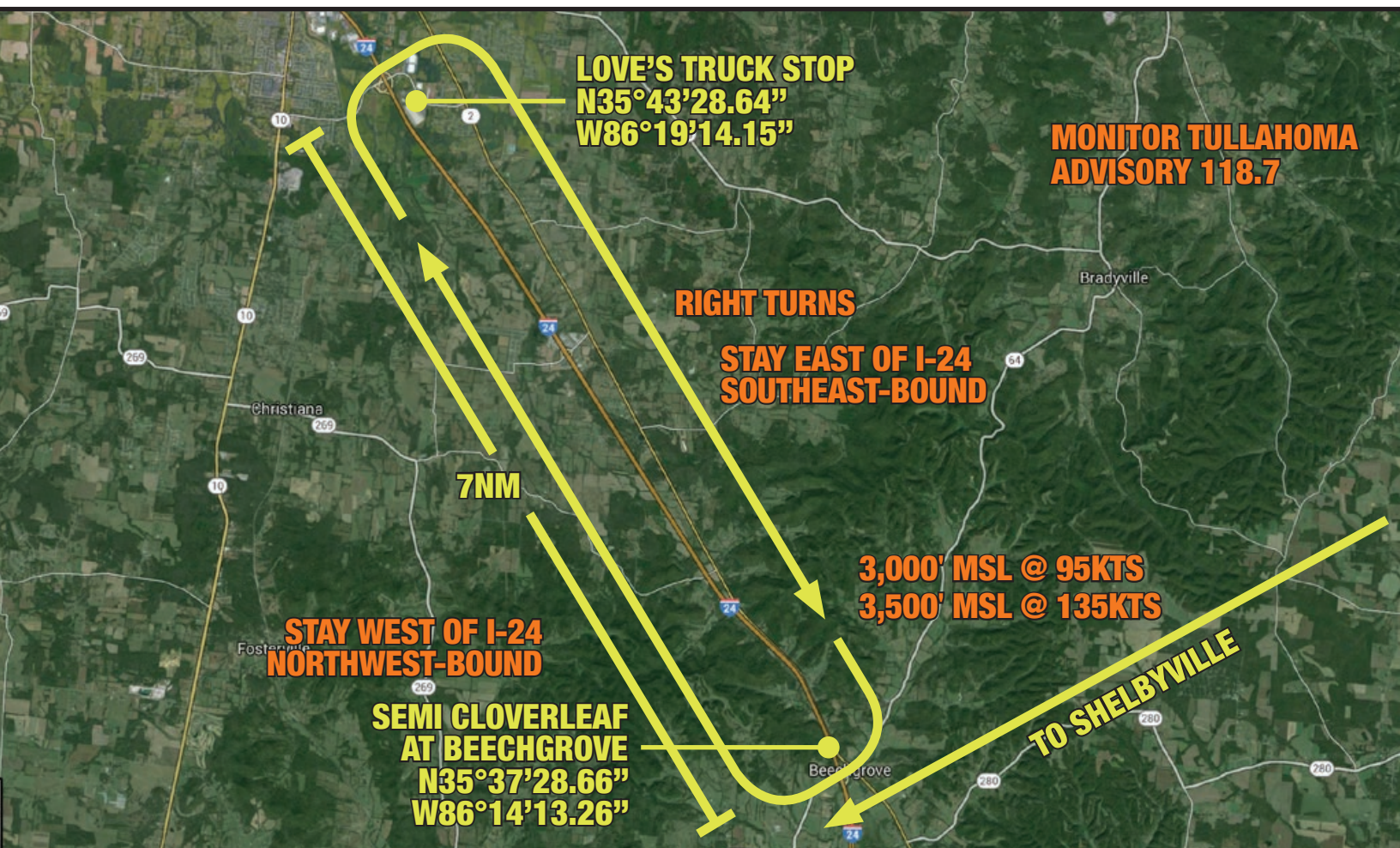
Caution: Stay alert for converging traffic. Monitor Shelbyville Municipal Airport UNICOM 122.8 if practical.

Contact Tullahoma Advisory on 118.7 when over Shelbyville Municipal Airport (SYI) and report position. *Example:* "Tullahoma Advisory, Skyhawk 1234 over Shelbyville 3000 with AWOS." Continue inbound and follow instructions from Tullahoma Advisory. Begin descent to pattern altitude at pilot's discretion after passing Shelbyville inbound. Expect to land on runway 24/6.

Traffic Pattern Altitude: 2100 MSL.

After landing, exit the runway as quickly and as safely as possible. Do not stop on the runway unless absolutely necessary. Keep moving after exiting the runway so as not to block subsequent arrivals. Follow taxi instructions and directional signs to the designated parking areas. Marshalls will direct aircraft to parking.

VFR HOLDING PATTERN: I-24 HOLD



VFR HOLDING PATTERN: LOVE'S TRUCK STOP ON I-24



VFR HOLDING PATTERN: SEMI CLOVERLEAF AT BEECHGROVE ON I-24



VFR PROCEDURES: ARRIVALS OVER ELLINGTON AIRPORT (LUG)



AWOS: 128.325

THA ADVISORY: 118.7

THA UNICOM: 123.00

Check Tullahoma AWOS on 128.325 as soon as practical.

This arrival procedure begins over Ellington Airport (LUG). There are two airspeeds and two altitudes for this arrival route. Slower aircraft should reduce speed to 95 knots or less and maintain 3,000 feet MSL prior to reaching Ellington Airport (LUG.) Faster aircraft should reduce speed to 135 knots and maintain 3,500 feet MSL prior to reaching Ellington Airport (LUG.)

Caution: Stay alert for converging traffic. Monitor Ellington Airport UNICOM 122.8 if practical.

Pilots should contact Memphis Center on 128.15 well in advance of arriving over Ellington Airport to assist with sequencing and reduce congestion. Pilots not receiving advisory services from Memphis Center should announce position over Shelbyville Municipal Airport (SYI) on the Tullahoma Advisory

Frequency 118.7. Follow instructions from Tullahoma Advisory. Expect radar services to be terminated prior to reaching the Route 16 Hold.

Caution: Stay alert for converging traffic.

Proceed from Ellington Airport (LUG) to Shelbyville Municipal Airport (SYI). In the event that traffic volume requires holding, follow the holding procedure as depicted in the *Route 16 Hold* graphic. All aircraft should fly right turns. Slower aircraft should fly the hold at 95 knots/3,000 feet MSL and faster aircraft should fly the hold at 135 knots/3,500 feet MSL. Monitor Tullahoma Advisory on 118.7 for information on when to depart the hold.

When holding is no longer required, return to the beginning of the hold approximately 1 mile north of the junkyard and proceed toward Shelbyville Municipal Airport (SYI).

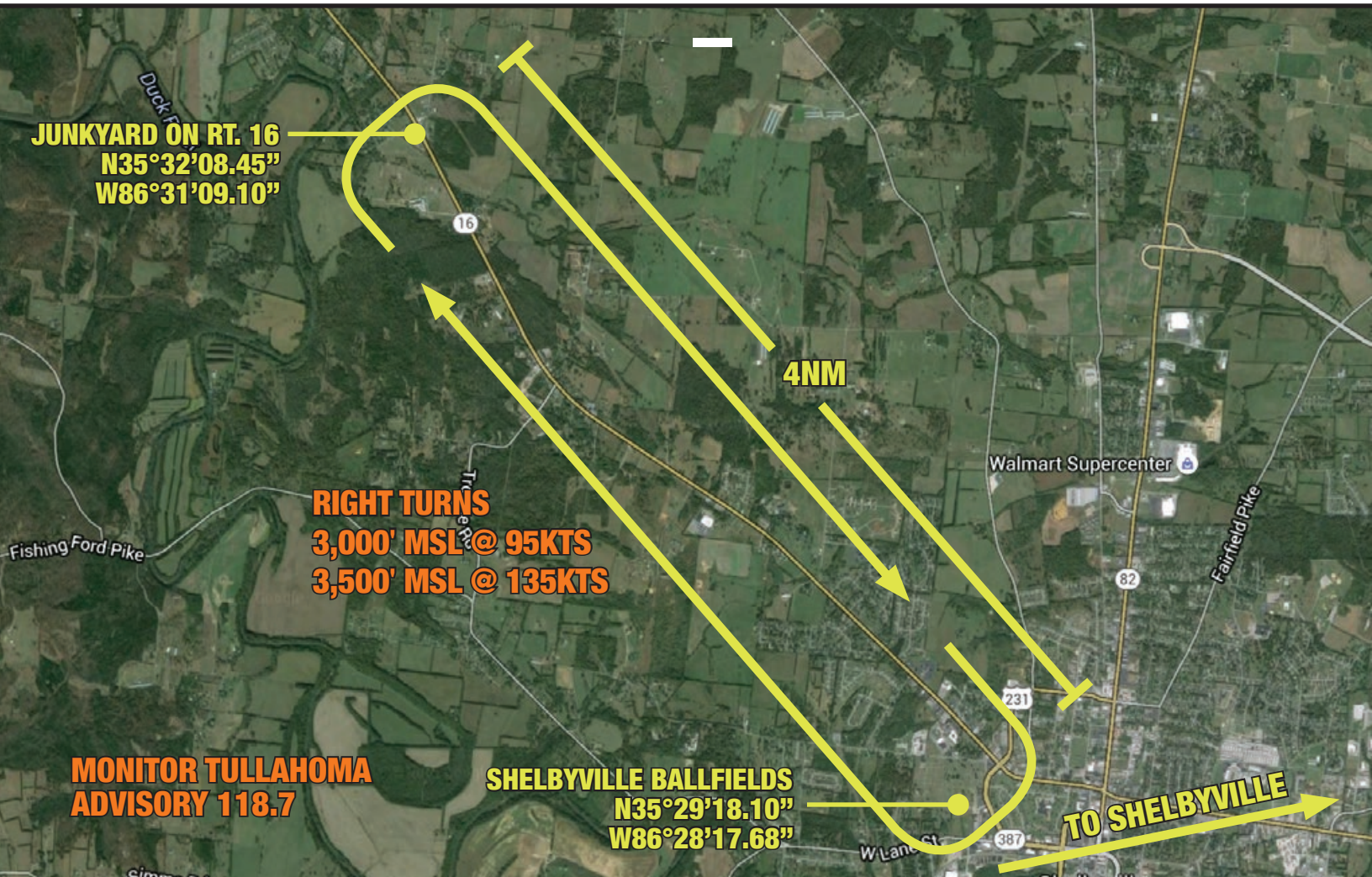
Caution: Stay alert for converging traffic. Monitor Shelbyville Municipal Airport UNICOM 122.8 if practical.

Contact Tullahoma Advisory on 118.7 when over Shelbyville Municipal Airport (SYI) and report position. *Example: "Tullahoma Advisory, Skyhawk 1234 over Shelbyville 3000 with AWOS."* Continue inbound and follow instructions from Tullahoma Advisory. Begin descent to pattern altitude at pilot's discretion after passing Shelbyville inbound. Expect to land on runway 24/6.

Traffic Pattern Altitude: 2100 MSL.

After landing, exit the runway as quickly and as safely as possible. Do not stop on the runway unless absolutely necessary. Keep moving after exiting the runway so as not to block subsequent arrivals. Follow taxi instructions and directional signs to the designated parking areas. Marshalls will direct aircraft to parking.

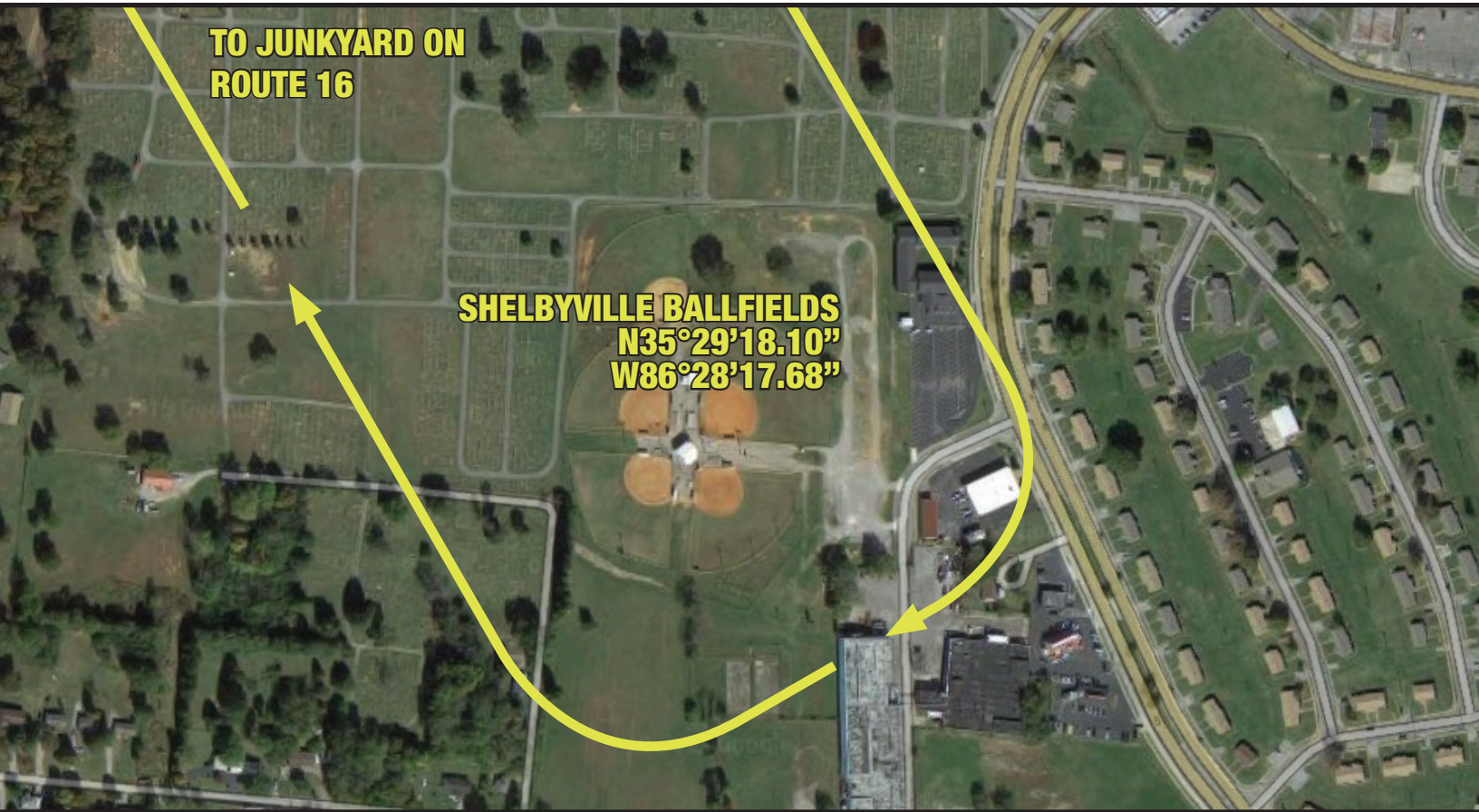
VFR HOLDING PATTERN: ROUTE 16 HOLD



VFR HOLDING PATTERN: JUNKYARD ON ROUTE 16



VFR HOLDING PATTERN: SHELBYVILLE BALLFIELDS ON ROUTE 16



IFR ARRIVALS

IFR Delays

IFR arrivals should file to IDEYA and expect the RNAV (GPS) RWY 24 approach. IFR arrivals will be integrated with VFR traffic. However IFR separation requirements may cause delays when arrival rates exceed airport capacity. Pilots on an IFR flight plan should be prepared for potential holding. IFR flight plans to Tullahoma Regional Airport should be filed **at least 2 hours** prior to proposed departure time.

TEMPORARY AIRPORT CLOSURE FOR AEROBATIC DEMONSTRATION

There will be a 10-15 minute aerobatic demonstration between 11:30 AM-1:30 PM local on Saturday, October 10, 2015 during the AOPA Fly-in. Arrivals and departures will be stopped for the duration of the demonstration. Please plan accordingly.

LOCAL TRAINING AND PRACTICE APPROACHES

Local traffic pattern, closed traffic training, and practice instrument approaches may not be available at Tullahoma Regional Airport during the AOPA Fly-In.

CAUTIONS

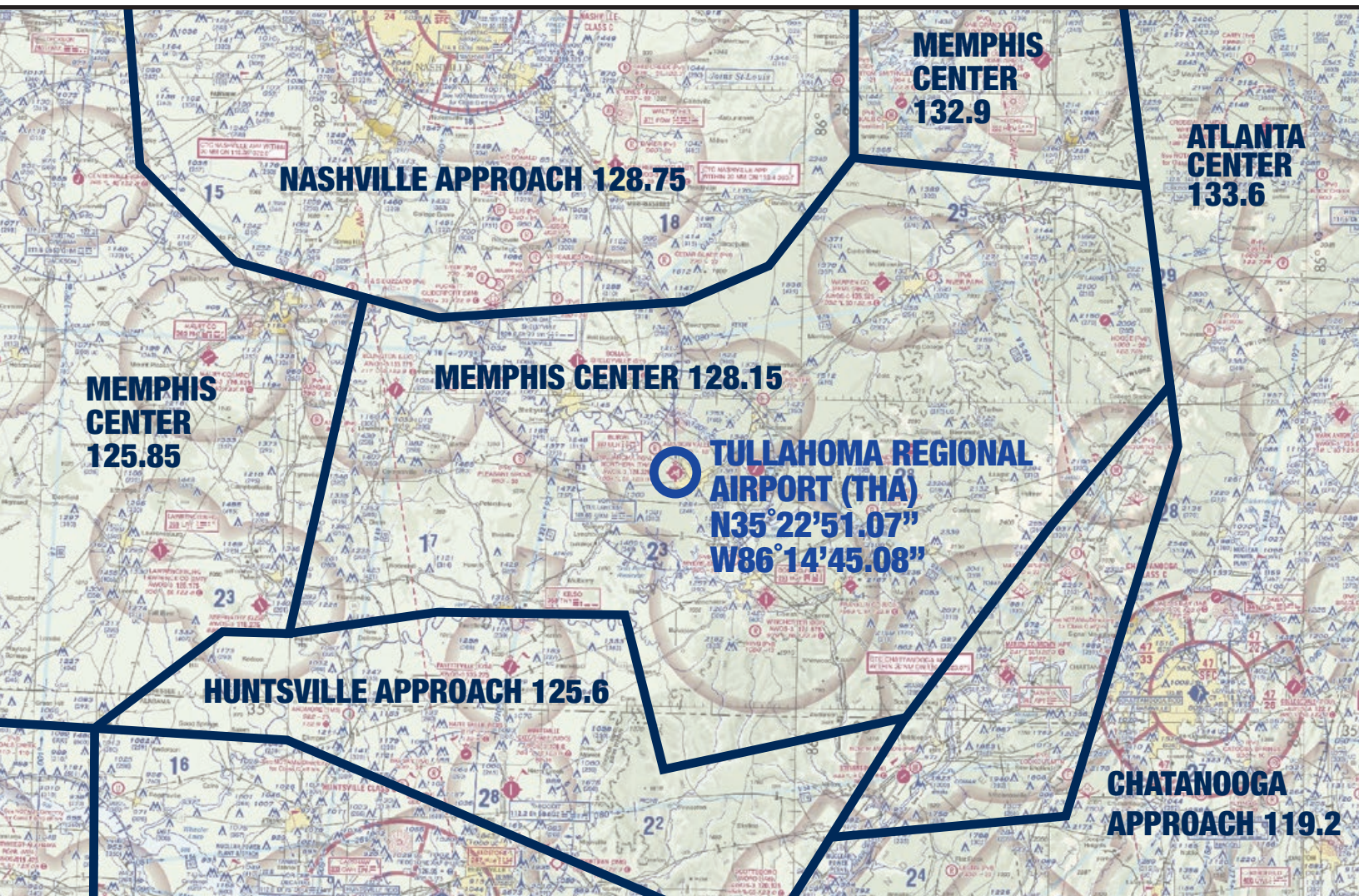
Converging traffic over Warren County Memorial Airport (RNC)/Monitor UNICOM 122.8 if practical.

Converging traffic over Ellington Airport (LUG)/Monitor UNICOM 122.8 if practical.

Converging traffic over Shelbyville Municipal Airport (SYT)/Monitor UNICOM 122.8 if practical.

High density traffic during peak hours (8:00 AM-11:00 AM Saturday, October 10, 2015) at Tullahoma Regional Airport (THA).

ENROUTE FREQUENCY OVERVIEW



AWOS: 128.325

THA ADVISORY: 118.7

THA UNICOM: 123.00

FREQUENCIES & WAYPOINT INFORMATION

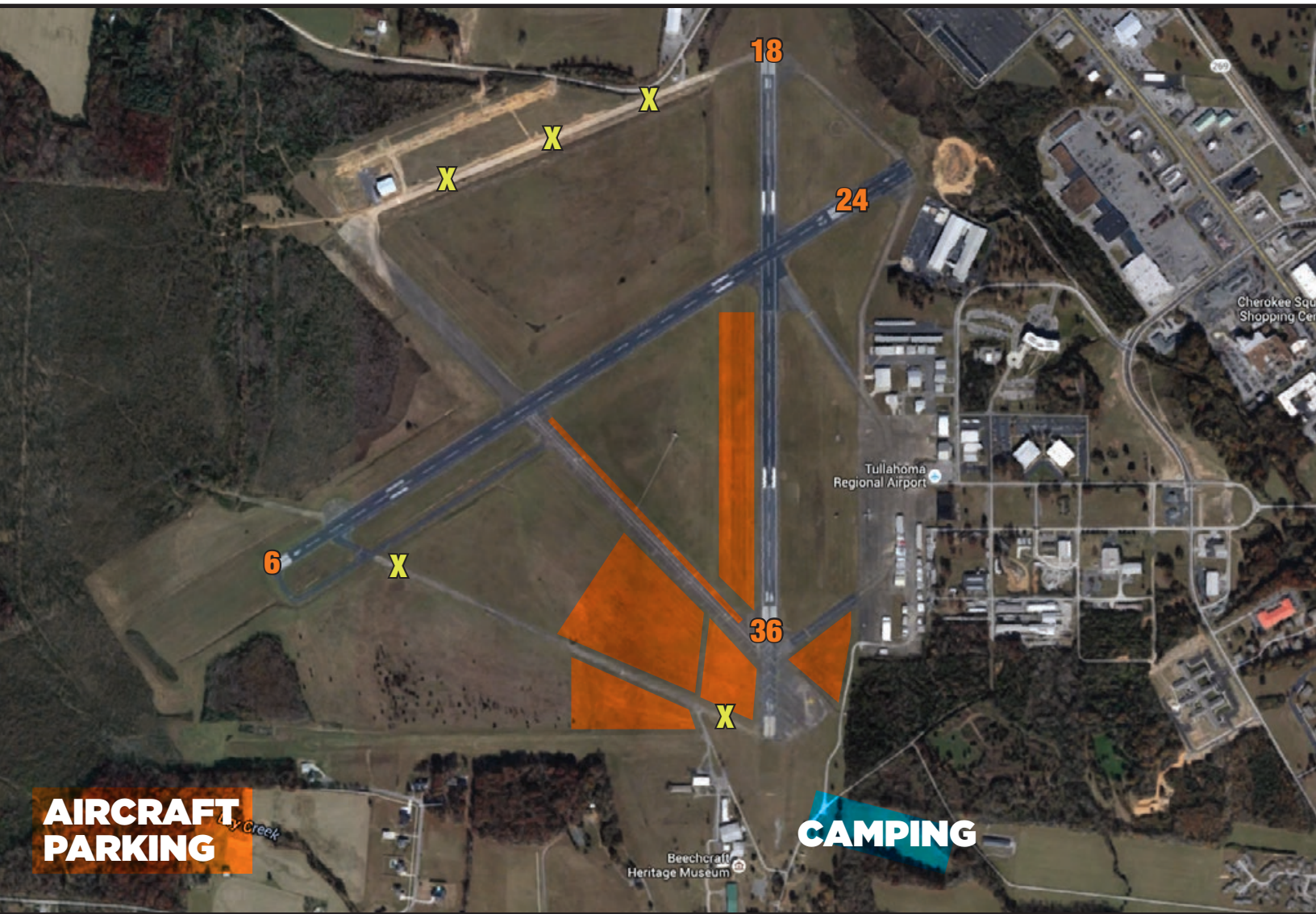
Tullahoma Regional Airport Frequencies

AWOS	128.325
AWOS Telephone Number	931.454.2052
Tullahoma Advisory	118.7
<i>*In Service During Effective Times of NOTAM Only</i>	
Tullahoma CTAF/UNICOM	123.00
Memphis Center	128.15

Specific Latitude/Longitude Coordinates

Warren County Memorial Airport (RNC)	N35°41'52.01"/W85°50'41.71"
McMinnville, TN	N35°40'55.72"/W86°46'14.41"
Semi Cloverleaf Near Beechgrove, TN	N35°37'28.66"/W86°14'13.26"
Route from RNC to SYI Intersects I-24	N35°36'25.49"/W86°14'23.28"
Love's Truck Stop	N35°43'28.64"/W86°19'14.15"
Ellington Airport (LUG)	N35°30'17.51"/W86°47'42.58"
Junkyard on Route 16	N35°32'08.45"/W86°31'09.10"
Shelbyville Ballfields	N35°29'18.10"/W86°28'17.68"
Shelbyville Municipal Airport (SYI)	N35°33'31.92"/W86°26'33.19"
Tullahoma Regional Airport (THA)	N35°22'51.07"/W86°14'45.08"

GENERAL INFORMATION TULLAHOMA REGIONAL AIRPORT



AWOS: 128.325

THA ADVISORY: 118.7

THA UNICOM: 123.00

Parking Areas:

When operating in the parking areas, pilots are encouraged to be extra alert for taxiing aircraft, aircraft with engine(s) running, and vehicle/pedestrian traffic.

Marshalls will be assisting aircraft to and from parking areas and run-up areas.

For safety reasons, high RPM engine running is prohibited in designated parking areas. For departure, it is recommended that pilots conduct their run-up procedures in queue if practical.

Please review the parking map prior to landing and departure.

Vehicular Traffic:

Vehicles are not allowed on ramps except those belonging to airport operators and tenants, and exhibitors participating in the AOPA Tullahoma Regional Airport Fly-In.

Pre-flight Planning:

Please ensure that you have reviewed the special flight information, departure procedures, and temporary taxi procedures prior to engine start.

High traffic density is expected Saturday morning and afternoon. Consider arriving during off-peak hours.

DEPARTURE PROCEDURES: TULLAHOMA REGIONAL AIRPORT

IFR Departures

Follow marshalls instructions to taxi to the nearest designated IFR departure holding area. IFR departures should obtain a clearance from Tullahoma Advisory on 118.7 when ready for departure.

VFR Departures

VFR Flight Following: Pilots wanting VFR flight-following should make the request to the following ATC facility at the distance specified. Please do not contact the ATC facility until you have reached the specified distance from Tullahoma Regional Airport.

THA 300-030 Bearing at 20 DME, contact BNA approach on 128.75

THA 030-060 Bearing at 35 DME, contact Memphis Center on 132.9

THA 060-080 Bearing at 45 DME, contact Atlanta Center on 133.6

THA 080-140 Bearing at 35 DME, contact CHA approach on 119.2

THA 140-250 Bearing at 35 DME, contact HSV approach on 125.6

THA 250-300 Bearing at 35 DME, contact Memphis Center on 125.85

Prior to Start-up: Please ensure that you have reviewed the special flight information, departure procedures, and temporary taxi procedures prior to engine start. Check AWOS on 128.325.

Engine Start: Locate a marshaller to monitor engine start.

Taxi: Follow instructions from marshalls to taxi for departure runway.

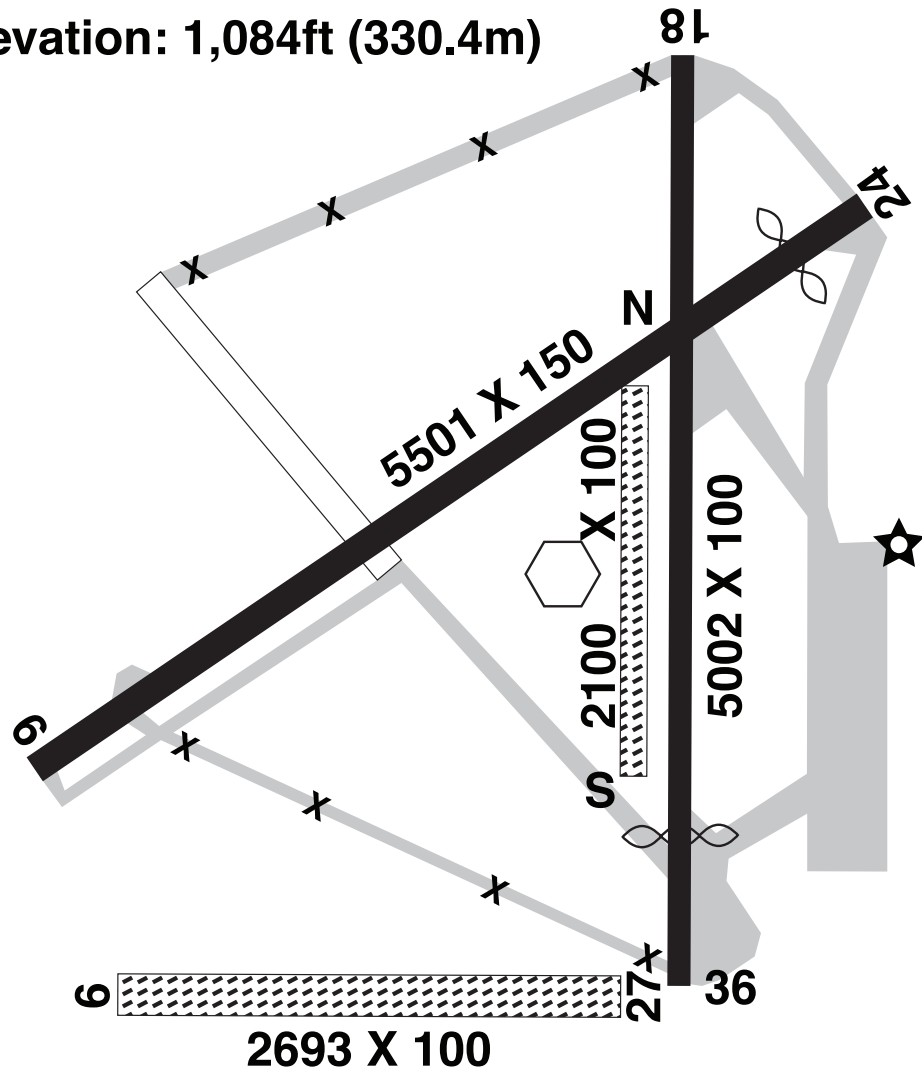
Run-up: If practical, it is recommended that you conduct your run-up while in queue for departure. Please consider propeller blast during your run-up.

Monitor Tullahoma Advisory on 118.7 during taxi and be prepared for immediate departure when number one.

Departure: Follow instructions from Tullahoma Advisory on 118.7.

TULLAHOMA REGIONAL AIRPORT (THA)

Elevation: 1,084ft (330.4m)



AWOS: 128.325

THA ADVISORY: 118.7

THA UNICOM: 123.00

ADDITIONAL INFORMATION

AOPA Fly-In Host FBO At Tullahoma Regional Airport (THA)

The AOPA Fly-In Host FBO at Tullahoma Regional Airport (THA) is the Tullahoma Airport Authority. We thank them for their support, enthusiasm, and participation in the AOPA Fly-In at THA.



Tullahoma Airport Authority

807 William Northern Boulevard
Tullahoma, TN 37388

Hours of operation:

Monday-Sunday 8:00 AM – 6:00 PM

Phone: 931-455-3884

Fax: 931-841-3941

Email: taa@lighttube.net

Website: www.tullahomatan.gov/airport/

Fuel Discount

Discount available with Shell credit cards.

Parking & Service Details

Fuel/oil orders will be taken at the time your aircraft is parked. If you need either, please make sure to make the request at that time. Orders made at a later time might delay your departure. Credit card information will be requested at the time the order is placed. Receipts if requested will be emailed or available in the FBO. If you are uncomfortable providing credit card information on the ramp, you can provide the information directly to the FBO's front desk.

Chocks & Tie Downs

Chocks will not be available so we highly recommend that you bring your own. Tie down hooks are scattered on the ramp and parking on tie down spaces is unlikely. It is recommended that you bring tie-downs and anchors for any additional aircraft securing needs.

After-hours Departures

If you will be departing after the airport's normal operating hours please contact the after-hours Line Service number at 931-455-3884.

Camping

Aircraft camping will be permitted at Tullahoma Regional Airport (THA) on Friday, October 9 and Saturday, October 10, 2015. Space is limited and will be available on a first-come, first-served basis. There is no charge. **If you plan to camp, you must RSVP to [AOPA-THA Camping RSVP](#).** A confirmation will be sent with additional information. Camping aircraft will be requested to prominently place a C in the windshield.



DTC Flight Planning

Check weather and file your flight plan with DTC DUAT at www.duat.com; the official weather sponsor of AOPA's Regional Fly-Ins.

Rental Car Availability



Phone: 866.315.9155

Also available: Hertz

Other Area Airports

There are several public use airports that are within an hour drive of Tullahoma Regional Airport (THA). You might elect to use one of these airports in the event aircraft parking reaches capacity at THA. Rental cars are also available at many of these airports. Please contact the airport directly for more information.

Shelbyville Municipal Airport

[Bomar Field—Shelbyville Municipal Airport \(SYI\)](#) is located 14 nautical miles northwest of Tullahoma Regional Airport (THA) and is approximately a 27 minute drive to THA. Shelbyville Municipal Airport has one hard surface runway. 18/36 is 5503 X 100. The airspace is Class G. Rental cars are available through Enterprise at 866-315-9155.



[Ellington Airport \(LUG\)](#) is located 28 nautical miles northwest of Tullahoma Regional Airport (THA) and is approximately a 55 minute drive to THA. Ellington Airport has one hard surface runway. 02/20 is 5002 X 75. The airspace is Class G. Contact the airport directly about rental car availability. 931-359-5003.



[Warren County Memorial Airport \(RNC\)](#) is located 27 nautical miles northeast of Tullahoma Regional Airport (THA) and is approximately a 55 minute drive to THA. Warren County Memorial Airport has one hard surface runway. 05/23 is 5000 X 100. The airspace is Class G. Rental cars are available through Enterprise at 866-315-9155.



[Winchester Municipal Airport \(BGF\)](#) is located 15 nautical miles southeast of Tullahoma Regional Airport (THA) and is approximately a 32 minute drive to THA. Winchester Municipal Airport has on hard surface runway. 18/36 is 5002 X 75. The airspace is Class G. Contact the airport directly about rental car availability. 931-967-3148.

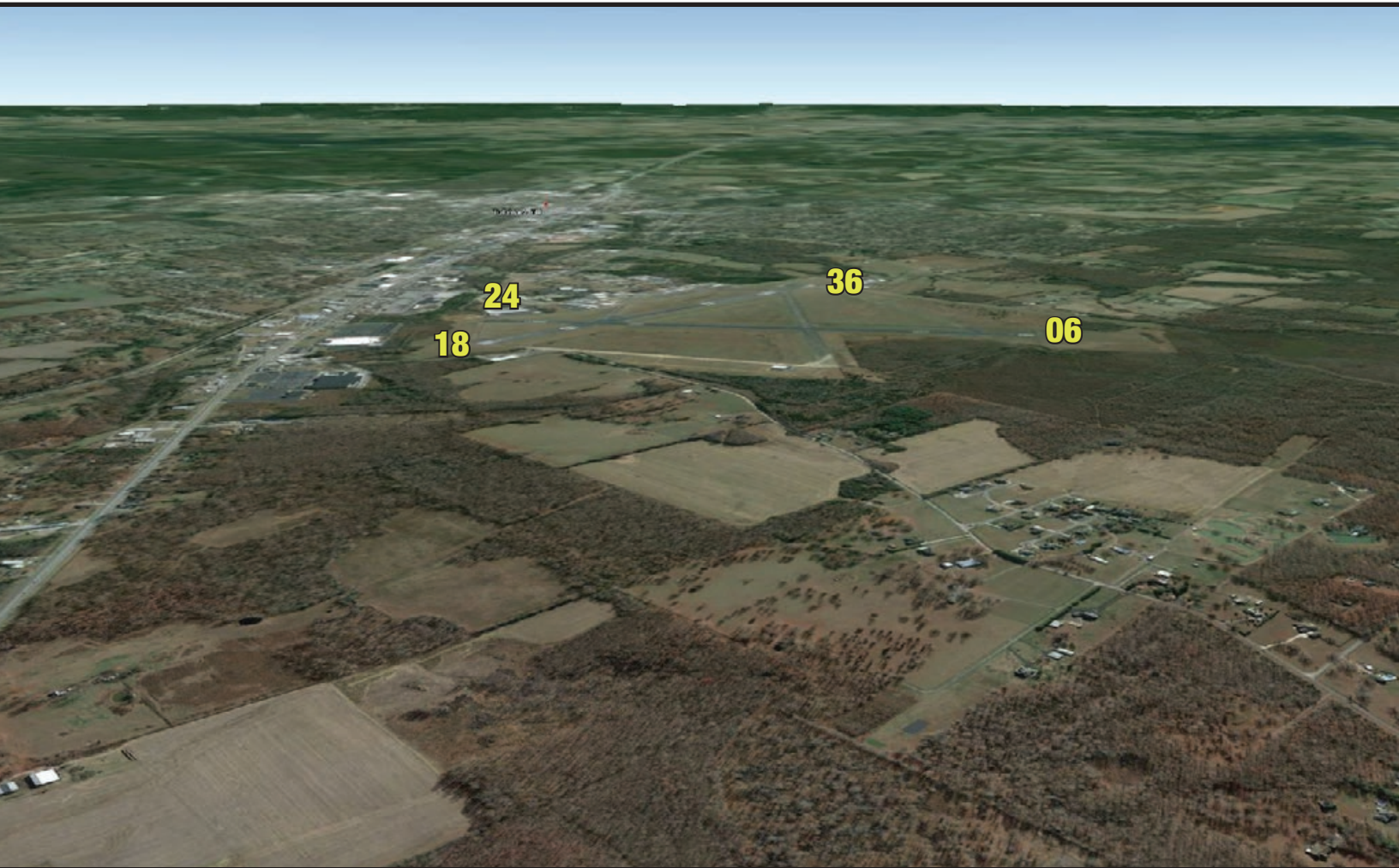


[Franklin County Airport \(UOS\)](#) is located 20 nautical miles southeast of Tullahoma Regional Airport (THA) and is approximately a 46 minute drive to THA. Franklin County Airport has one hard surface runway. 06/24 is 3700 X 50. The airspace is Class G. Contact the airport directly about rental car availability. 931-598-1910.



[Murfreesboro Municipal Airport \(MBT\)](#) is located 30 nautical miles northwest of Tullahoma Regional Airport (THA) and is approximately a one hour drive to THA. Murfreesboro Municipal Airport has one hard surface runway. 18/36 is 3898 X 100. The airspace is Class G. Contact the airport directly about rental car availability. 615-848-3254.

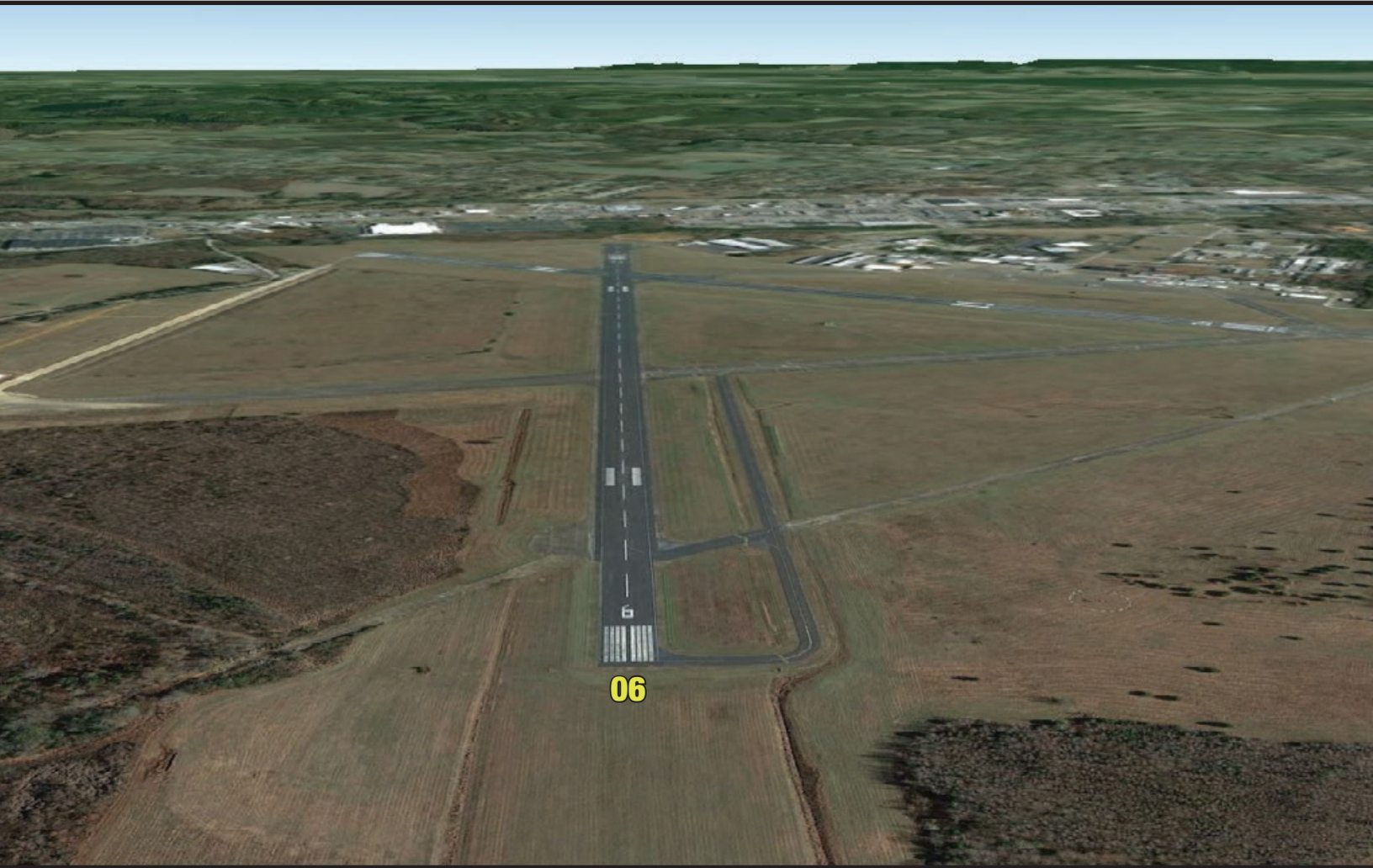
APPROACHING TULLAHOMA REGIONAL AIRPORT (THA) FROM SHELBYVILLE



LANDING RUNWAY 24 AT TULLAHOMA REGIONAL AIRPORT (THA)



LANDING RUNWAY 6 AT TULLAHOMA REGIONAL AIRPORT (THA)



LANDING RUNWAY 18 AT TULLAHOMA REGIONAL AIRPORT (THA)



LANDING RUNWAY 36 AT TULLAHOMA REGIONAL AIRPORT (THA)



SHELBYVILLE MUNICIPAL AIRPORT (SYI)



SHELBYVILLE MUNICIPAL AIRPORT FREQUENCIES

AWOS 119.275T (931.685.4723) CTAF 122.8 UNICOM 122.8

ELLINGTON AIRPORT (LUG)



ELLINGTON AIRPORT FREQUENCIES

AWOS 135.775T (931.270.1014) CTAF 122.8 UNICOM 122.8

WARREN COUNTY MEMORIAL AIRPORT (RNC)



WARREN COUNTY MEMORIAL AIRPORT FREQUENCIES

AWOS 135.525T (931.668.7056) CTAF 122.8 UNICOM 122.8

WINCHESTER MUNICIPAL AIRPORT (BGF)



WINCHESTER MUNICIPAL AIRPORT FREQUENCIES

AWOS 121.675T (931.967.8445) CTAF 122.8 UNICOM 122.8

MURFREESBORO MUNICIPAL AIRPORT (MBT)



MURFREESBORO MUNICIPAL AIRPORT FREQUENCIES

APPROACH/DEPARTURE 118.4 AWOS 133.975T (615.849.2622) CTAF 123.075 UNICOM 123.075

FRANKLIN COUNTY AIRPORT (UOS)



FRANKLIN COUNTY AIRPORT FREQUENCIES

CTAF 122.8 UNICOM 122.8

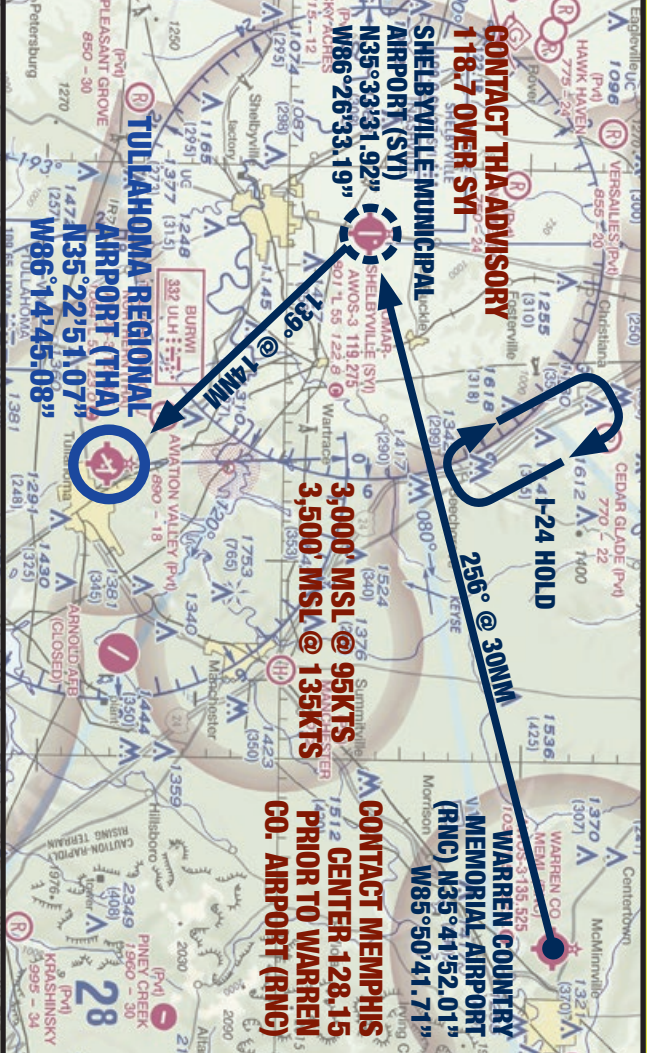


AOPA FLY-IN

PRINT AND PLACE IN AIRCRAFT WINDSHIELD

VFR PROCEDURES: ARRIVAL OVER WARREN COUNTY AIRPORT & I-24 HOLD

AWOS: 128.325 THA ADVISORY: 118.7 THA UNICOM: 123.00



VFR PROCEDURES: ARRIVAL OVER WARREN COUNTY AIRPORT & I-24 HOLD

AWOS: 128.325 THA ADVISORY: 118.7 THA UNICOM: 123.00

Check Tullahoma AWOS on 128.325 as soon as practical.

Procedure begins over Warren County Memorial Airport (RNC) at 3,000 feet MSL/95 knots or 3,500 feet MSL/135 knots.

Caution: Stay alert for converging traffic. Monitor Warren County Memorial Airport UNICOM 122.8 if practical.

Contact Memphis Center on 128.15 in advance of arriving over Warren County Memorial Airport (RNC) to assist with sequencing and reduce congestion. Pilots not receiving advisory services from ATC should announce position over Shelbyville Municipal Airport (SYL) on the Tullahoma Advisory frequency 118.7. Follow instructions.

Caution: Stay alert for converging traffic.



Proceed from Warren County Memorial Airport (RNC) to Shelbyville Municipal Airport (SYL). In the event traffic volume requires holding, follow the holding procedure as depicted in the *I-24 Hold graphic*. All aircraft should fly right turns; 95 knots/3,000 feet MSL or 135 knots/3,500 feet MSL. Monitor Tullahoma Advisory on 118.7 for information on when to depart the hold.

When holding is no longer required, complete the hold and return to the inbound route approximately one nautical mile south of the semi-cloverleaf at Beechgrove, TN and continue toward Shelbyville Municipal Airport (SYL).

Caution: Stay alert for converging traffic. Monitor Shelbyville Municipal Airport UNICOM 122.8 if practical.

Contact Tullahoma Advisory on 118.7 when over Shelbyville Municipal Airport (SYL) and report position. Example: "Tullahoma Advisory, Skyhawk 1234 over Shelbyville 3000 with AWOS." Follow instructions from Tullahoma Advisory. Descend to pattern altitude at pilot's discretion after passing Shelbyville inbound. Expect to land runway 24 or 6.

Traffic Pattern Altitude: 2100 MSL.

After landing, exit the runway as quickly and as safely as possible. Do not stop on the runway unless absolutely necessary. Keep moving after exiting the runway so as not to block subsequent arrivals. Follow taxi instructions and directional signs to the designated parking areas. Marshallsers will direct aircraft to parking.

VFR PROCEDURES: ARRIVAL OVER ELLINGTON AIRPORT & ROUTE 16 HOLD

AWOS: 128.325 THA ADVISORY: 118.7 THA UNICOM: 123.00



VFR PROCEDURES: ARRIVAL OVER ELLINGTON AIRPORT & ROUTE 16 HOLD

AWOS: 128.325 THA ADVISORY: 118.7 THA UNICOM: 123.00

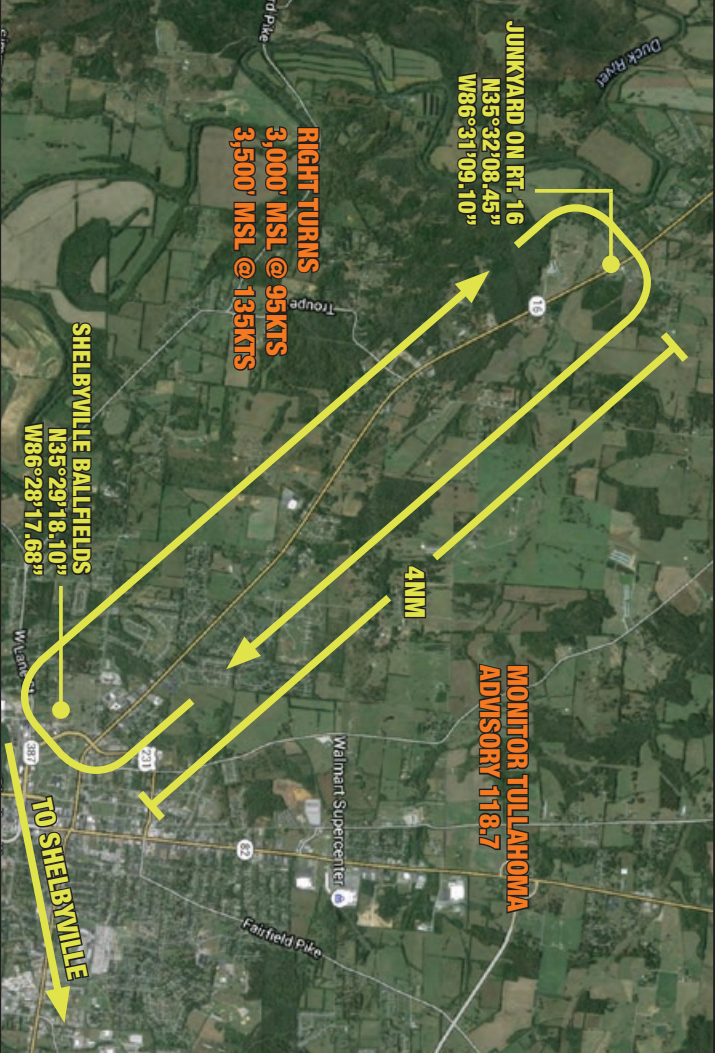
Check Tullahoma AWOS on 128.325 as soon as practical.

Procedure begins over Ellington Airport (LUG) at 3,000 feet MSL/95 knots or 3,500 feet MSL/135 knots.

Caution: Stay alert for converging traffic. Monitor Ellington Airport UNICOM 122.8 if practical.

Contact Memphis Center on 128.15 in advance of arriving over Ellington Airport (LUG) to assist with sequencing and reduce congestion. Pilots not receiving advisory services from ATC should announce position over Shelbyville Municipal Airport (SY) on the Tullahoma Advisory frequency 118.7. Follow instructions.

Caution: Stay alert for converging traffic.



Proceed from Ellington Airport (LUG) to Shelbyville Municipal Airport (SY). In the event that traffic volume requires holding, follow the holding procedure as depicted in the *Route 16 Hold graphic*. All aircraft should fly right turns, 95 knots/3,000 feet MSL or 135 knots/3,500 feet MSL. Monitor Tullahoma Advisory on 118.7 for information on when to depart the hold.

When holding is no longer required, return to the beginning of the hold approximately 1 mile north of the junkyard and proceed toward Shelbyville Municipal Airport (SY).

Caution: Stay alert for converging traffic. Monitor Shelbyville Municipal Airport UNICOM 122.8 if practical.

Contact Tullahoma Advisory on 118.7 when over Shelbyville Municipal Airport (SY) and report position. Example: "Tullahoma Advisory, Skyhawk 1234 over Shelbyville 3000 with AWOS." Follow instructions from Tullahoma Advisory. Descend to pattern altitude at pilot's discretion after passing Shelbyville inbound. Expect to land runway 24 or 6.

Traffic Pattern Altitude: 2100 MSL.

After landing, exit the runway as quickly and as safely as possible. Do not stop on the runway unless absolutely necessary. Keep moving after exiting the runway so as not to block subsequent arrivals. Follow taxi instructions and directional signs to the designated parking areas. Marshalls will direct aircraft to parking.