

AOPA FLY-IN

ERNEST A LOVE FIELD AIRPORT (PRC)

PILOT INFORMATION PACKET

SEPT 30 - OCT 1 | PRESCOTT, AZ



SPECIAL FLIGHT PROCEDURES EFFECTIVE

12:00 Noon MST until 6:00 PM MST Friday, September 30, 2016

7:00 AM MST until 6:00 PM MST Saturday, October 1, 2016



TABLE OF CONTENTS

PRESCOTT PILOT INFORMATION PACKET

KNEEBOARD QUICK REFERENCE GRAPHICS 01-02

VFR Arrivals: Ash Fork & Cement Hold.....	01
VFR Arrivals: Cordes Junction & Dewey Hold.....	02

NOTAM—TEMPORARY VFR PROCEDURES 03-14

VFR Arrivals Overview.....	03
VFR Procedures: Arrivals over Ash Fork.....	04
Graphics—Ash Fork High School & Chino Valley HS/Drake VORTAC/PRC.....	05
Graphic—Chino Valley High School.....	06
VFR Holding Pattern: Cement Hold Graphics.....	07
VFR Procedures: Arrivals over Cordes Junction.....	08
Graphics—Cordes Junction & Cordes Junction Arrival—Highway Split.....	09
Graphics—Cordes Junction Arrival—21R/21L In Use & Crossroads Shopping Center.....	10
Graphics—Cordes Junction Arrival—3R/3L In Use & Yavapai Co. Fairgrounds.....	11
VFR Holding Pattern: Dewey Hold.....	12
IFR Arrivals.....	13
Temporary Ernest A Love Field Airport Closure for Aerobatic Demonstration.....	13
Local Training and Practice Approaches.....	13
Cautions.....	13
Ernest A Love Field Airport (PRC) Frequencies.....	13
Enroute Frequency Overview.....	13
Waypoint Information.....	14

GENERAL INFORMATION 15

Parking Areas.....	15
Vehicular Traffic.....	15
Preflight Planning.....	15

DEPARTURE PROCEDURES 16

IFR Departures.....	16
VFR Departures.....	16
- VFR Flight Following.....	16
- Prior to Start-up.....	16
- Engine Start.....	16
- Taxi.....	16
- Run-up.....	16
- Departure.....	16

FLIGHT FOLLOWING FREQUENCIES—GRAPHIC 17

W K KELLOGG (BATTLE CREEK) AIRPORT—DIAGRAM..... 18

ADDITIONAL INFORMATION 19-20

No Aircraft Radio 19

Student Pilots 19

Host FBO Information 19

Parking and Service Details 19

Chocks and Tie Downs 19

Camping 19

After-hours Departure 20

Rental Car Availability 20

Other Area Airports 20

- Cottonwood Airport (P52) 20
- Sedona Airport (SEZ) 20
- H A Clark Memorial Field Airport (CMR) 20

No Low-Transition Departures 20

ADDITIONAL GRAPHICS 21-24

Landing Runway 3R at PRC 21

Landing Runway 3L at PRC 21

Landing Runway 21R at PRC 22

Landing Runway 21L at PRC 22

Show Center—Looking Southwest 23

Cottonwood Airport (P52)—satellite view with frequencies 23

Sedona Airport (SEZ)—satellite view with frequencies 24

H A Clark Field Airport (CMR)—satellite view with frequencies 24

PRINTABLE AOPA WINDSHIELD GRAPHIC 25

VFR PROCEDURES

ARRIVALS OVER ASH FORK & CEMENT HOLD

ATIS: 127.2 TOWER 31/21R: 128.75; 3R/21L: 125.3

GROUND 31/21R: 119.25; 3R/21L: 121.7

CTAF: 125.3



VFR PROCEDURES

ARRIVALS OVER ASH FORK & DRAKE CEMENT HOLD

ATIS: 127.2 TOWER 31/21R: 128.75; 3R/21L: 125.3

GROUND 31/21R: 119.25; 3R/21L: 121.7

CTAF: 125.3

Check Prescott ATIS on 127.2

Procedure begins over Ash Fork at 8500 feet MSL. If not already in communication with ATIS, contact Phoenix Approach on 126.37 prior to arriving over Ash Fork. Do not proceed beyond Ash Fork until in contact with Phoenix Approach.

Caution: Stay alert for converging traffic.

From Ash Fork, follow Route 89 south toward Prescott. In the event that traffic volume requires holding, follow the hold procedure as depicted in the *Cement Hold graphic*. Fly left turns at 8500 feet MSL. When holding is no longer required, complete the hold and continue south along Route 89 toward Chino Valley. Phoenix Approach will advise when to switch to Prescott Tower 128.75.

Caution: Stay alert for traffic in the hold as well as traffic along Route 89.

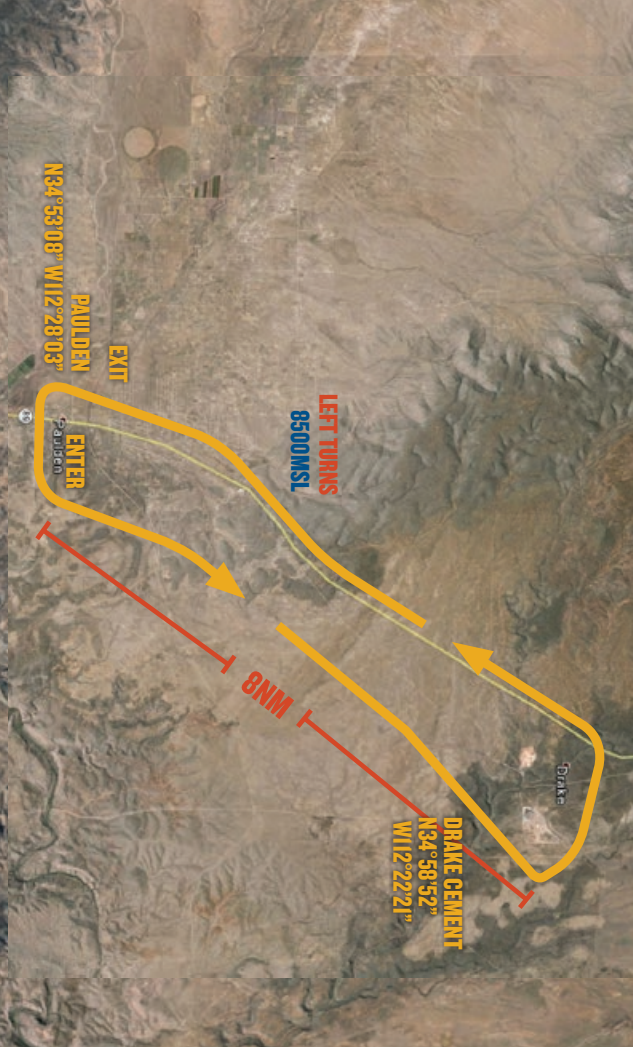
Report to Prescott Tower on 128.75 when passing Chino Valley High School east of Route 89 in Chino Valley. Example: "Prescott Tower, Skyhawk 1234 passing Chino Valley High School, 6500, inbound with ATIS code." Begin descent to pattern altitude at pilot's discretion.

PRC TPA: 6045 feet MSL light aircraft; 6545 feet MSL large/turbine aircraft

Proceed from Chino Valley High School to the Drake VORTAC; 206°/3 NM. From the Drake VORTAC, proceed to PRC; 125°/4 NM. Expect to enter a midfield downwind for 21R/3L or as instructed by Prescott Tower on 128.75.

After landing, exit the runway as quickly and as safely as possible. Do not stop on the runway unless absolutely necessary. Contact Prescott Ground on 119.25 when clear of the runway and follow taxi instructions to the designated parking areas. Marshalls will direct aircraft to parking.

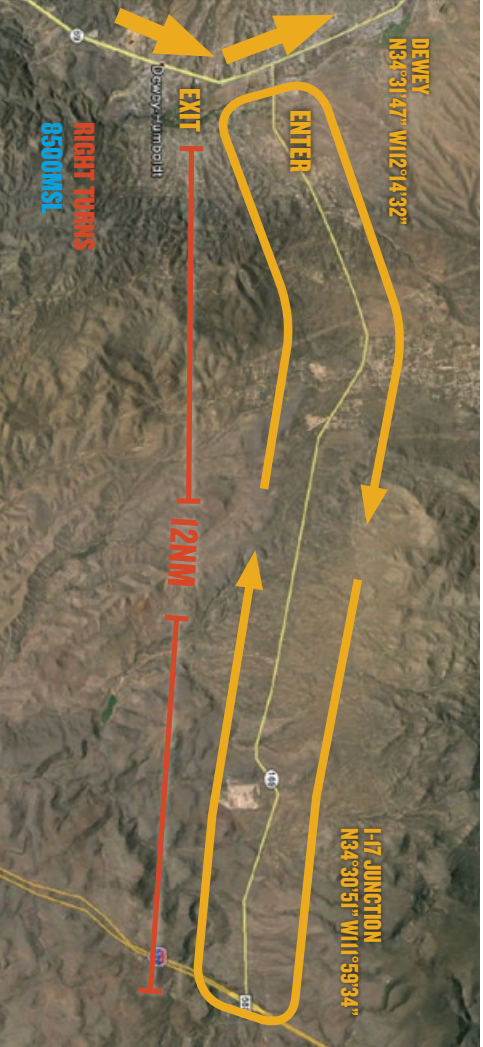
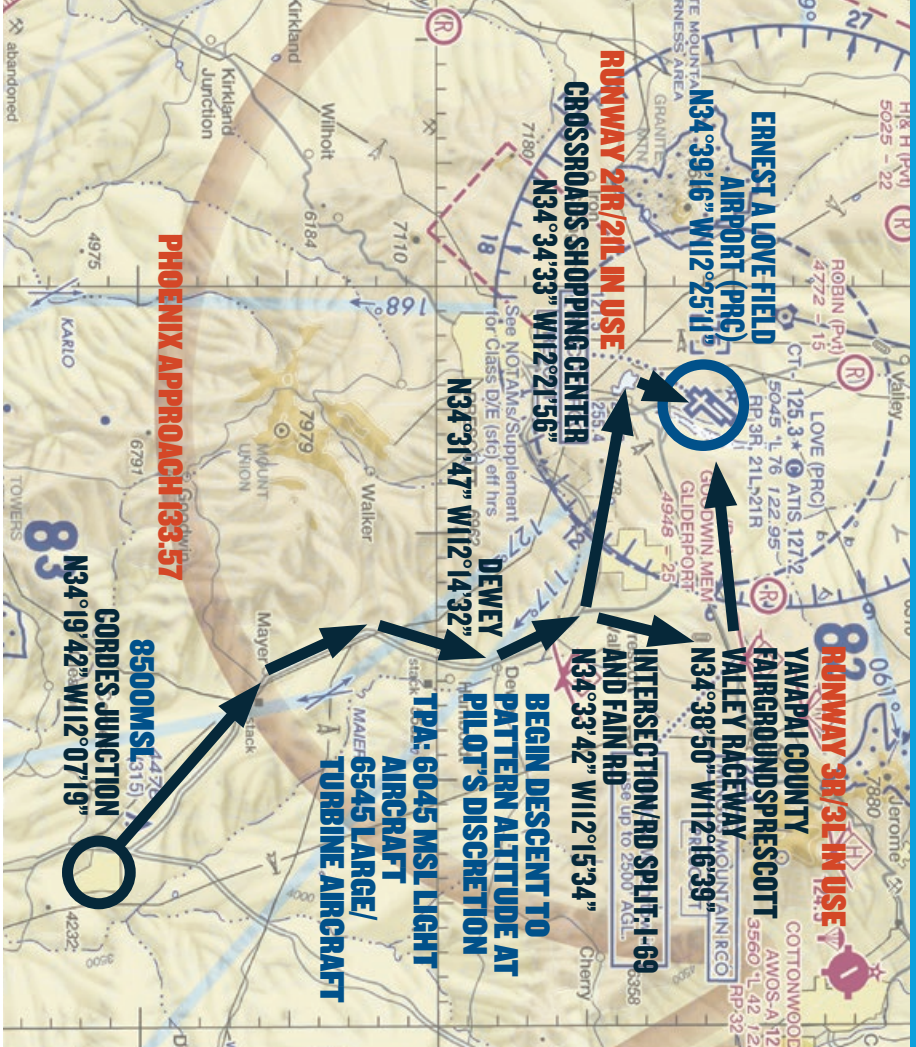
CEMENT HOLD



VFR PROCEDURES

ARRIVALS OVER CORDES JUNCTION & DEWEY HOLD

ATIS: 127.2 TOWER 3L/21R: 128.75; 3R/21L: 125.3 GROUND 3L/21R: 119.25; 3R/21L: 121.7 CTAF: 125.3



VFR PROCEDURES

ARRIVALS OVER CORDES JUNCTION & DEWEY HOLD

ATIS: 127.2 TOWER 3L/21R: 128.75; 3R/21L: 125.3 GROUND 3L/21R: 119.25; 3R/21L: 121.7 CTAF: 125.3

Check Prescott ATIS on 127.2

Procedure begins over Cordes Junction at 8500 feet MSL. If not already in communication with ATC, contact Phoenix Approach on 133.57 prior to arriving over Cordes Junction. Do not proceed beyond Cordes Junction until in contact with Phoenix Approach.

Caution: Stay alert for converging traffic.

Follow Route 69 north toward Prescott. If holding is required, follow the hold procedure as depicted in the *Dewey Hold graphic*. Fly right turns at 8500 feet MSL. When holding is no longer required, aircraft should complete the hold and continue north along Route 69. Expect to be advised by Phoenix Approach to switch to Prescott Tower 125.3 at or near the golf courses.

At the golf courses, follow directions below depending on runway in use.

If 3R/3L are in use, follow Fain Rd. NW toward the Yavapai Co. Fairgrounds: 5 NM/3.48". From Yavapai Co. Fairgrounds, PRC is 270°/7 NM. Report to Prescott Tower 125.3 when inbound from Yavapai Co. Fairgrounds. Example: "Prescott Tower, Skyhawk 1234 over fairgrounds, 6500, inbound with ATIS code." Begin descent to pattern altitude at pilot's discretion. Expect

to enter midfield right downwind for runway 3R or as instructed by Prescott Tower 125.3.

PRC TPA: 6045 feet MSL light aircraft; 6545 feet MSL large/turbine aircraft

If 21R/21L are in use, follow Route 69 west. Continue approximately 6.5 NM until reaching Crossroads Shopping Center. From Crossroads Shopping Center fly direct to Watson Lake: 285°/3 NM. Report to Prescott Tower on 125.3 when over Watson Lake inbound.

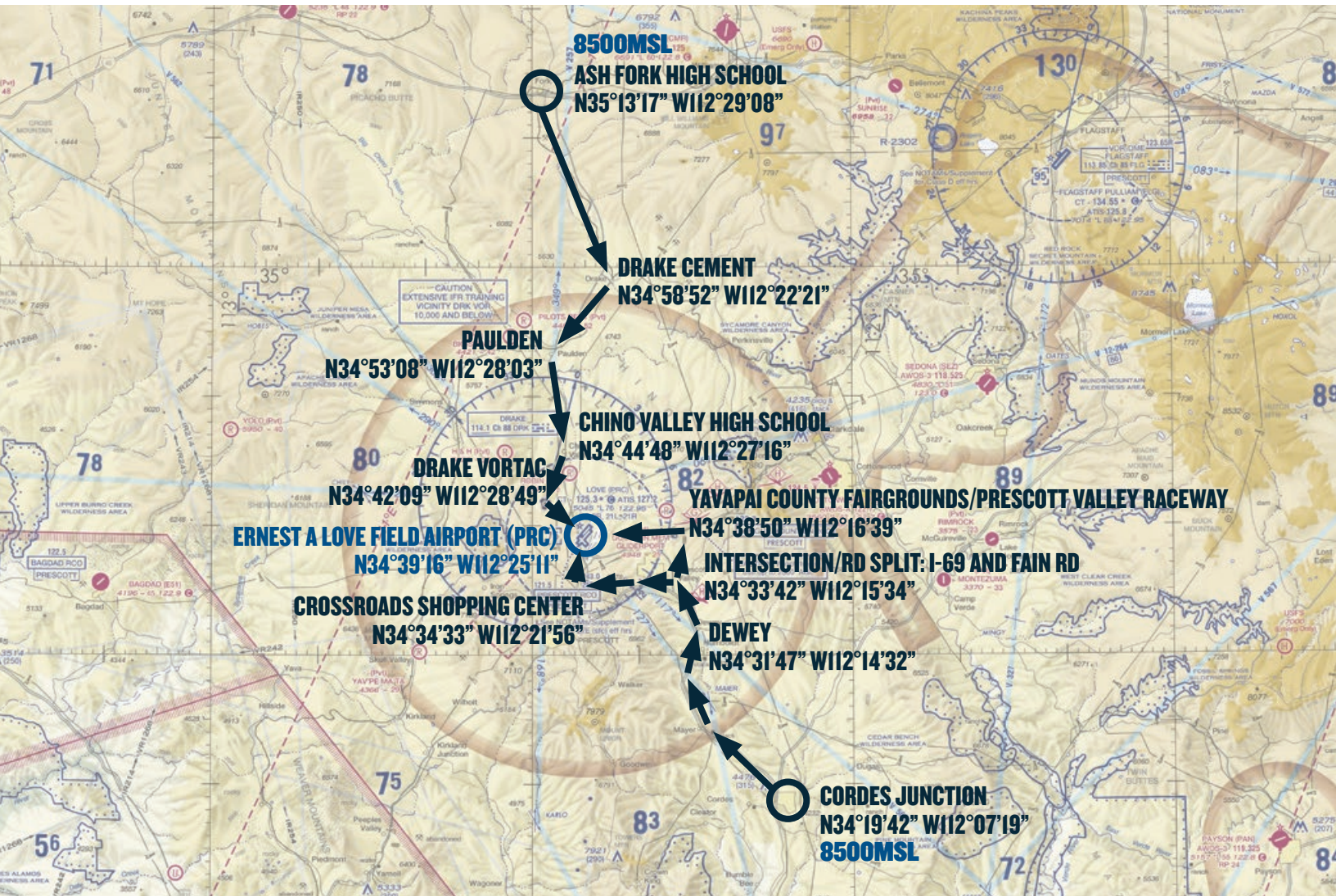
Example: "Prescott Tower, Skyhawk 1234 over Watson Lake, 7000, inbound with ATIS code." Begin descent to pattern altitude at pilot's discretion. From Watson Lake, continue to PRC: 355°/4 NM. Expect to enter a midfield left downwind for runway 21L or as instructed by Prescott Tower on 125.3.

PRC TPA: 6045 feet MSL light aircraft; 6545 feet MSL large/turbine aircraft

After landing, exit the runway as quickly and as safely as possible. Do not stop on the runway unless absolutely necessary. Contact Prescott Ground on 121.7 when clear of the runway and follow taxi instructions to the designated parking areas. Marshalls will direct aircraft to parking.



VFR ARRIVALS OVERVIEW



ATIS: 127.2 TOWER 3L/21R: 128.75; 3R/21L: 125.3 GROUND 3L/21R: 119.25; 3R/21L: 121.7 CTAF: 125.3

TEMPORARY VFR PROCEDURES

Specific procedures contained within this NOTAM may be revised at the time of the event. Pilots are urged to review all applicable NOTAMs and arrival/departure procedures prior to conducting a flight to Ernest A Love Field Airport. Users are encouraged to check NOTAMs frequently to verify they possess the most current revisions. This NOTAM does not supersede restrictions pertaining to the use of airspace contained in FDC NOTAMS.

VFR ARRIVALS

All VFR arrivals must begin over:

1. Ash Fork, 35 NM northwest of Ernest A Love Field Airport (PRC), or
2. Cordes Junction, 24 NM southeast of Ernest A Love Field Airport (PRC)

VFR PROCEDURES

ARRIVALS OVER ASH FORK



ATIS: 127.2 TOWER 3L/2IR: 128.75; 3R/2IL: 125.3 GROUND 3L/2IR: 119.25; 3R/2IL: 121.7 CTAF: 125.3

CHECK PRESCOTT ATIS ON 127.2 AS SOON AS PRACTICAL.

This procedure begins over Ash Fork, AZ at 8500 feet MSL. If not already in communication with ATC, contact Phoenix Approach on **126.37** prior to arriving over Ash Fork. Do not proceed beyond Ash Fork until in contact with Phoenix Approach.

Caution: Stay alert for converging traffic.

From Ash Fork, follow Route 89 south toward Prescott, AZ. In the event that traffic volume requires holding, follow the hold procedure as depicted in the *Cement Hold graphic*. All aircraft should fly left turns at 8500 feet MSL. When holding is no longer required, aircraft should complete the hold and then continue south following Route 89 toward the town of Chino Valley. Phoenix Approach will advise when to switch to Prescott Tower (**128.75**).

Caution: Stay alert for other traffic in the hold as well as traffic arriving from the north along Route 89.

Report to Prescott Tower on **128.75** when passing Chino Valley High School, just east of Route 89 in Chino Valley. (See *Chino Valley High School graphic*) Example. "Prescott Tower, Skyhawk 1234 passing Chino Valley High School, 6500, inbound with ATIS code." Begin descent to pattern altitude at pilot's discretion.

PRC TPA: 6045 feet MSL light aircraft; 6545 feet MSL large/turbine aircraft

Proceed from Chino Valley High School to the Drake VORTAC; approximately 3 NM on a heading of 206°. From the Drake VORTAC, proceed to Ernest A Love Field Airport (PRC); approximately 4 NM on a heading of 125°. Expect to enter a midfield downwind for either 21R or 3L or as instructed by Prescott Tower on **128.75**.

After landing, exit the runway as quickly and as safely as possible. Do not stop on the runway unless absolutely necessary. Contact Prescott Ground on **119.25** when clear of the runway and follow taxi instructions to the designated parking areas. Marshallsers will direct aircraft to parking.

ASH FORK HIGH SCHOOL



ATIS: 127.2 TOWER 3L/2IR: 128.75; 3R/2IL: 125.3 GROUND 3L/2IR: 119.25; 3R/2IL: 121.7 CTAF: 125.3

CHINO VALLEY HS TO DRAKE VORTAC TO PRC



ATIS: 127.2 TOWER 3L/2IR: 128.75; 3R/2IL: 125.3 GROUND 3L/2IR: 119.25; 3R/2IL: 121.7 CTAF: 125.3

CHINO VALLEY HIGH SCHOOL

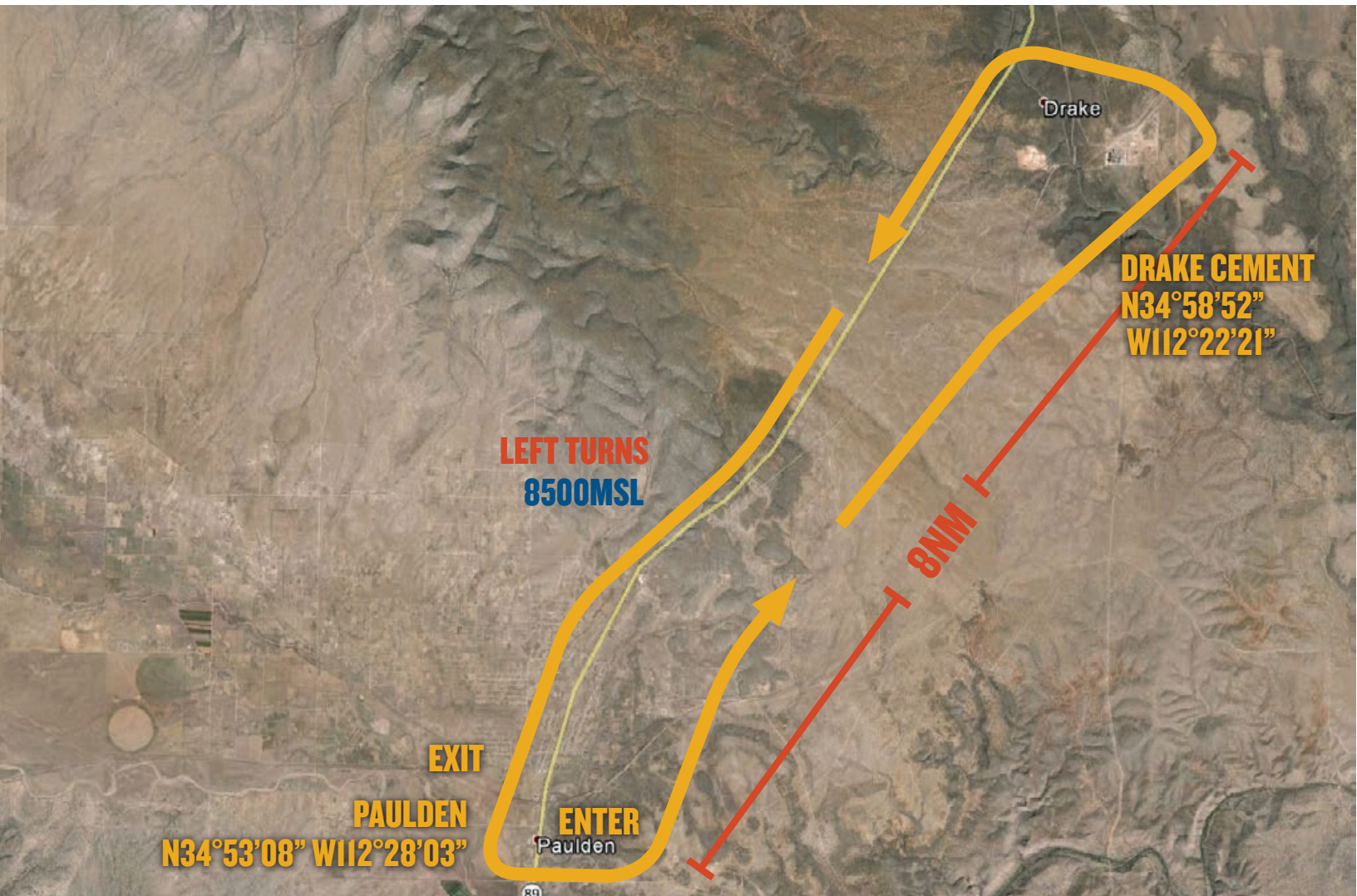


CEMENT HOLD



ATIS: 127.2 TOWER 3L/2IR: 128.75; 3R/2IL: 125.3 GROUND 3L/2IR: 119.25; 3R/2IL: 121.7 CTAF: 125.3

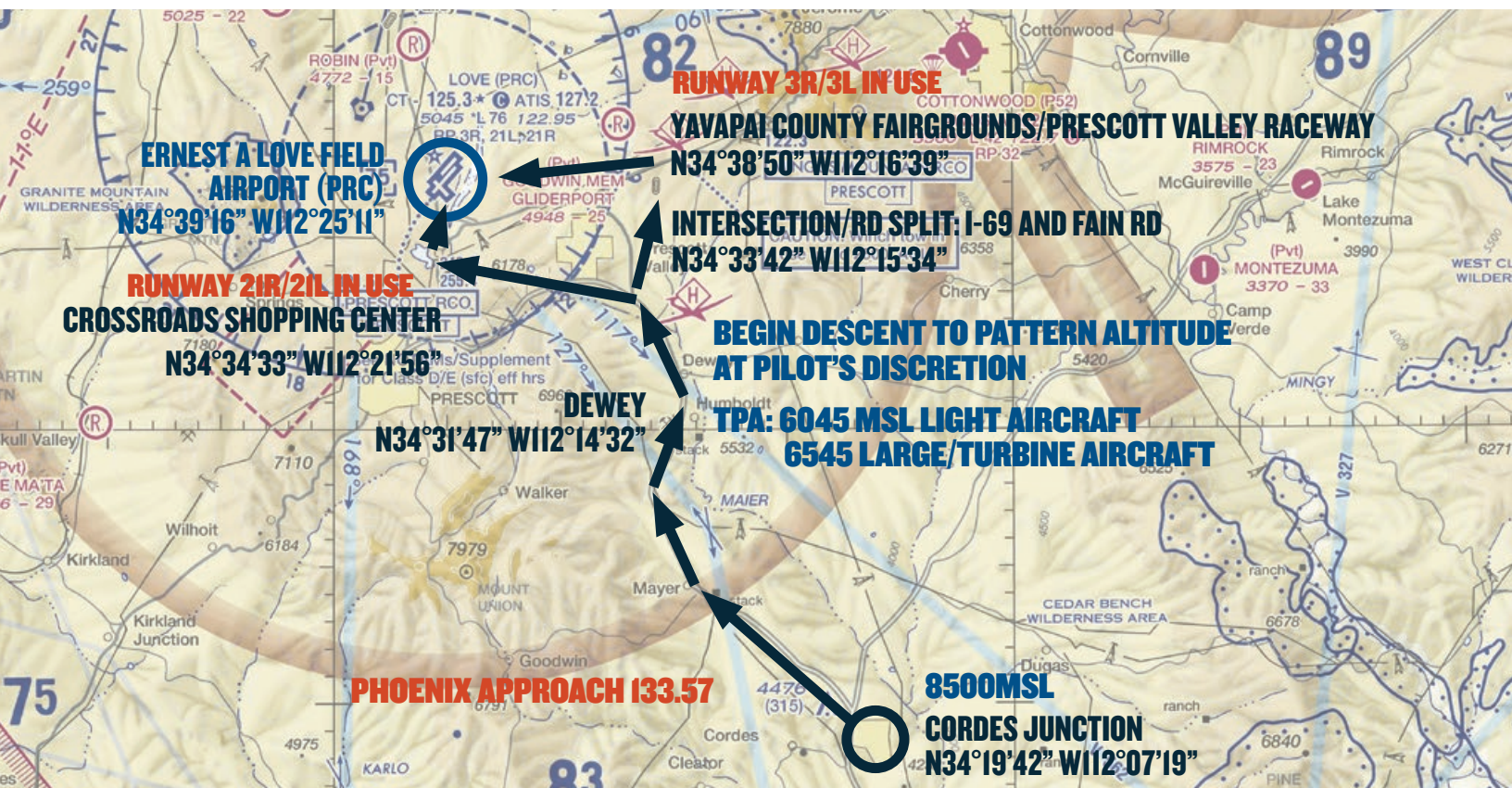
CEMENT HOLD



ATIS: 127.2 TOWER 3L/2IR: 128.75; 3R/2IL: 125.3 GROUND 3L/2IR: 119.25; 3R/2IL: 121.7 CTAF: 125.3

VFR PROCEDURES

ARRIVALS OVER CORDES JUNCTION



ATIS: 127.2 TOWER 3L/21R: 128.75; 3R/21L: 125.3 GROUND 3L/21R: 119.25; 3R/21L: 121.7 CTAF: 125.3

CHECK PRESCOTT ATIS ON 127.2 AS SOON AS PRACTICAL.

This procedure begins over Cordes Junction, AZ at 8500 feet MSL. If not already in communication with ATC, contact Phoenix Approach on **133.57** prior to arriving over Cordes Junction. Do not proceed beyond Cordes Junction until in contact with Phoenix Approach.

Caution: Stay alert for converging traffic

From Cordes Junction, follow Route 69 north toward Prescott, AZ. In the event that traffic volume requires holding, follow the hold procedure as depicted in the *Dewey Hold graphic*. All aircraft should fly right turns at 8500 feet MSL. When holding is no longer required, aircraft should complete the hold and then continue north from the town of Dewey following Route 69. Expect to be advised by Phoenix Approach to switch to Prescott Tower (**125.3**) at or near the golf courses where Route 69 and Fain Road intersect.

Caution: Stay alert for other traffic in the hold as well as traffic arriving from the south along route 69.

At the golf courses, follow directions below depending on runway in use. (See *Highway Split: Cordes Junction Arrival graphic*)

If 3R/3L are in use, follow Fain Road northwest toward the Yavapai County Fairgrounds/Prescott Valley Raceway. (5 NM/348°). From Yavapai County Fairgrounds, Ernest A Love Field Airport (PRC) is approximately 7 NM on a heading 270°. Report to Prescott Tower on **125.3** when inbound from Yavapai County Fairgrounds to Ernest A Love Field Airport (PRC). Example. “Prescott Tower, Skyhawk 1234 over fairgrounds, 6500, inbound with ATIS code.” Begin descent to pattern altitude at pilot’s discretion. Expect to enter a midfield right downwind for runway 3R or as instructed by Prescott Tower on **125.3**.

PRC TPA: 6045 feet MSL light aircraft; 6545 feet MSL large/turbine aircraft

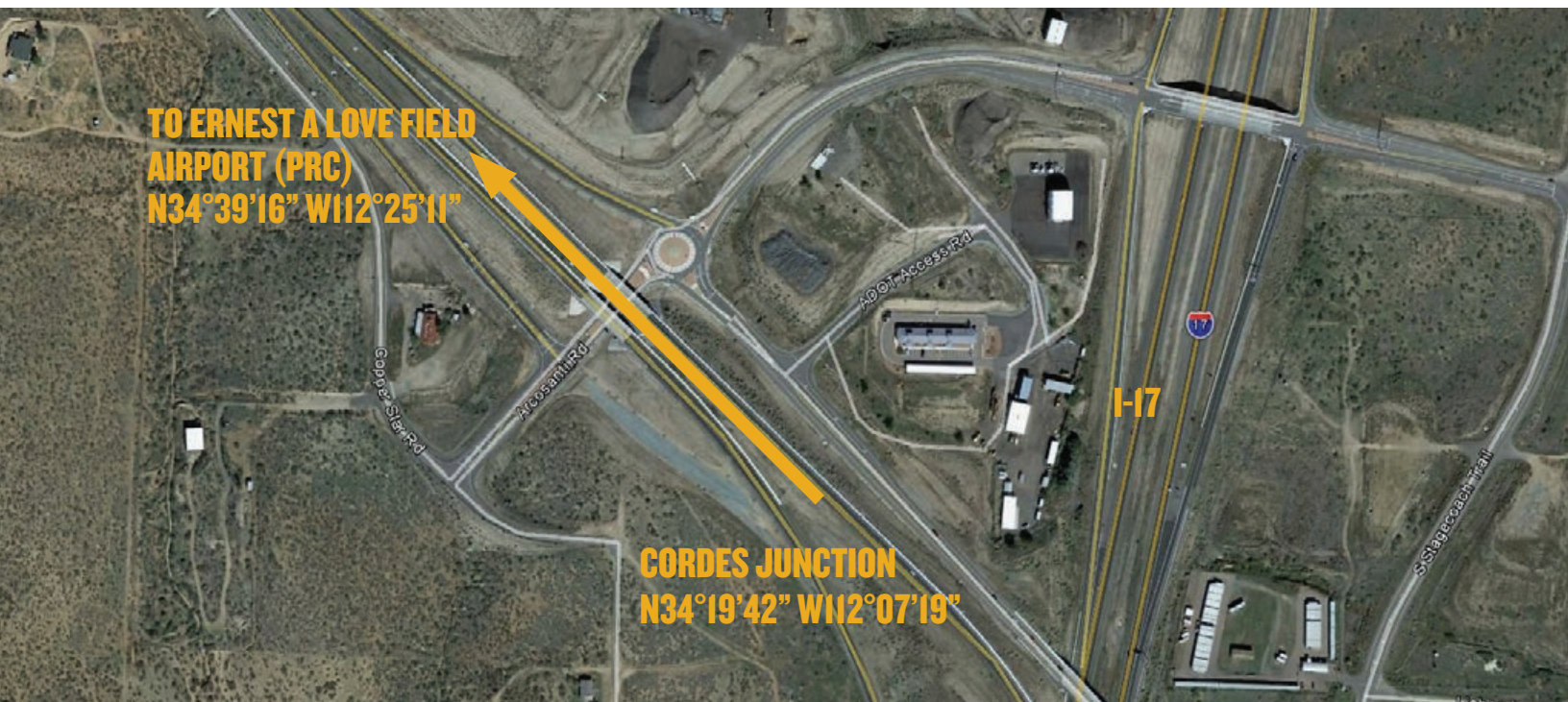
If 21R/21L are in use, follow Route 69 as it turns toward the west. Continue along Route 69 for approximately 6.5 miles until reaching

the Crossroads Shopping Center. From the Crossroads Shopping Center fly direct to Watson Lake; approximately 3 NM on a heading of 285°. Report to Prescott Tower on **125.3** when over Watson Lake inbound to Ernest A Love Field Airport (PRC). Example. “Prescott Tower, Skyhawk 1234 over Watson Lake, 7000, inbound with ATIS code.” Begin descent to pattern altitude at pilot’s discretion. From Watson Lake, Ernest A Love Field Airport (PRC) is approximately 4 NM on a heading of 355°. Expect to enter a midfield left downwind for runway 21L or as instructed by Prescott Tower on **125.3**.

PRC TPA: 6045 feet MSL light aircraft; 6545 feet MSL large/turbine aircraft

After landing, exit the runway as quickly and as safely as possible. Do not stop on the runway unless absolutely necessary. Contact Prescott Ground on **121.7** when clear of the runway and follow taxi instructions to the designated parking areas. Marshalls will direct aircraft to parking.

CORDES JUNCTION



ATIS: 127.2 TOWER 3L/2IR: 128.75; 3R/2IL: 125.3 GROUND 3L/2IR: 119.25; 3R/2IL: 121.7 CTAF: 125.3

CORDES JUNCTION ARRIVAL—HIGHWAY SPLIT



ATIS: 127.2 TOWER 3L/2IR: 128.75; 3R/2IL: 125.3 GROUND 3L/2IR: 119.25; 3R/2IL: 121.7 CTAF: 125.3

CORDES JUNCTION ARRIVAL—2IR/2IL IN USE



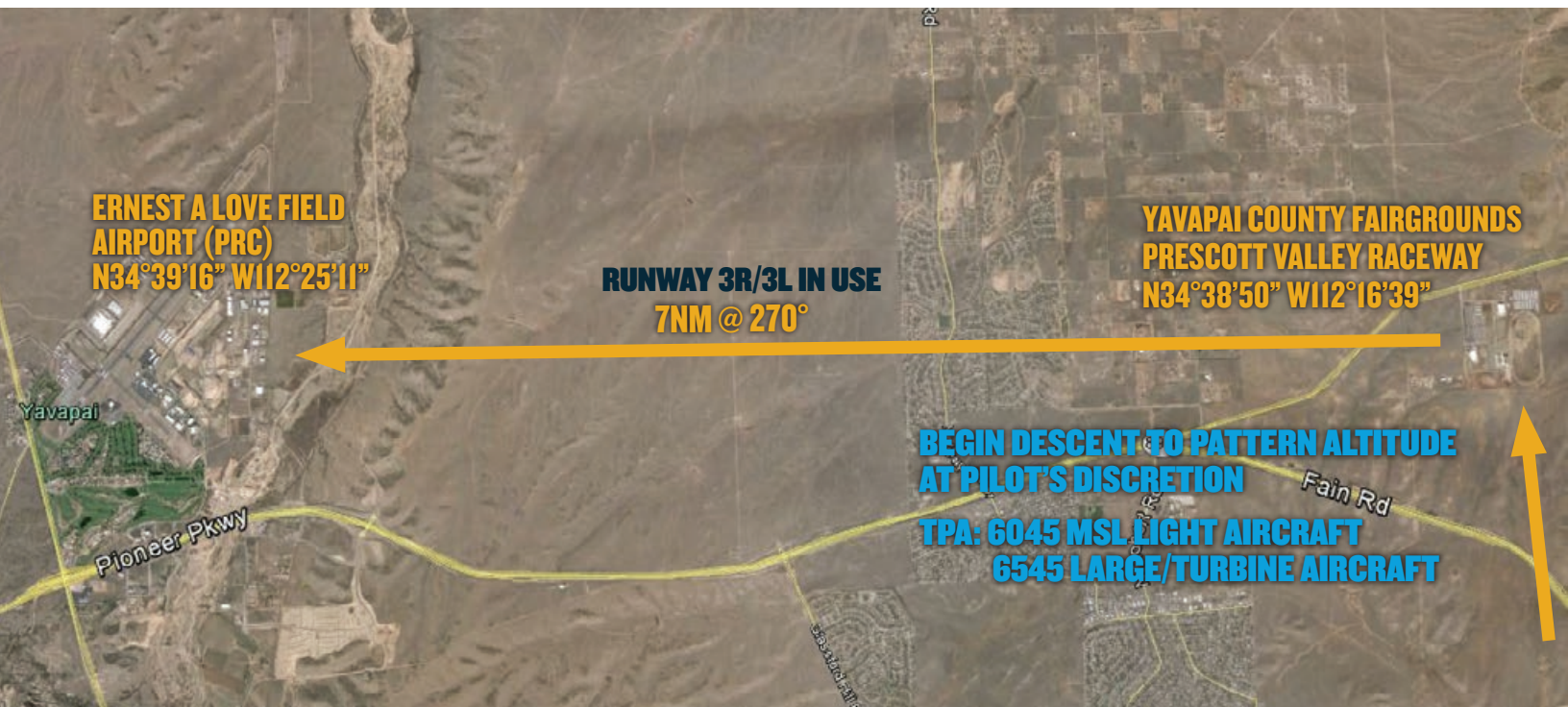
ATIS: 127.2 TOWER 3L/2IR: 128.75; 3R/2IL: 125.3 GROUND 3L/2IR: 119.25; 3R/2IL: 121.7 CTAF: 125.3

CROSSROADS SHOPPING CENTER ON ROUTE 69



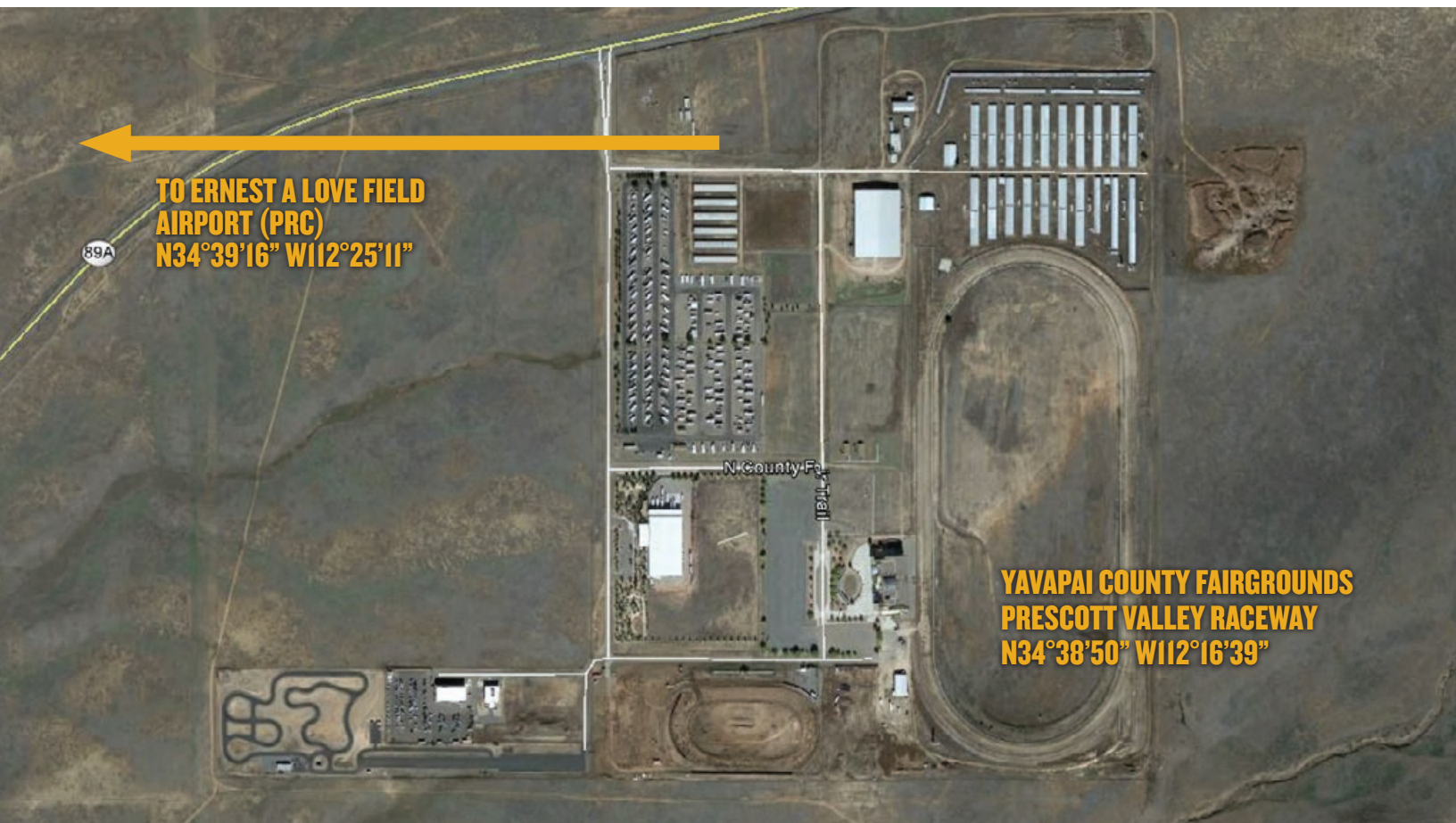
ATIS: 127.2 TOWER 3L/2IR: 128.75; 3R/2IL: 125.3 GROUND 3L/2IR: 119.25; 3R/2IL: 121.7 CTAF: 125.3

CORDES JUNCTION ARRIVAL—3R/3L IN USE



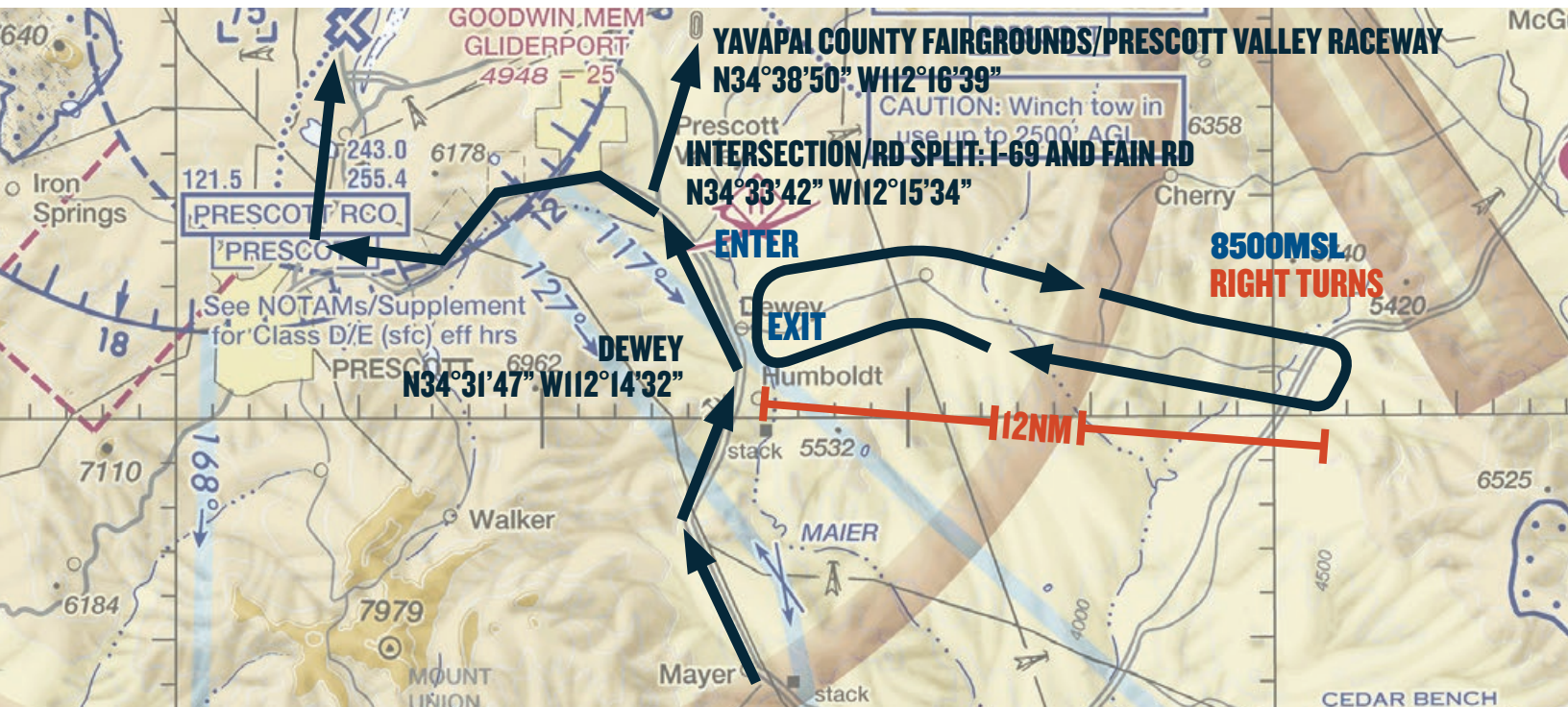
ATIS: 127.2 TOWER 3L/21R: 128.75; 3R/21L: 125.3 GROUND 3L/21R: 119.25; 3R/21L: 121.7 CTAF: 125.3

YAVAPAI CO FAIRGROUNDS/PRESCOTT VALLEY RACEWAY



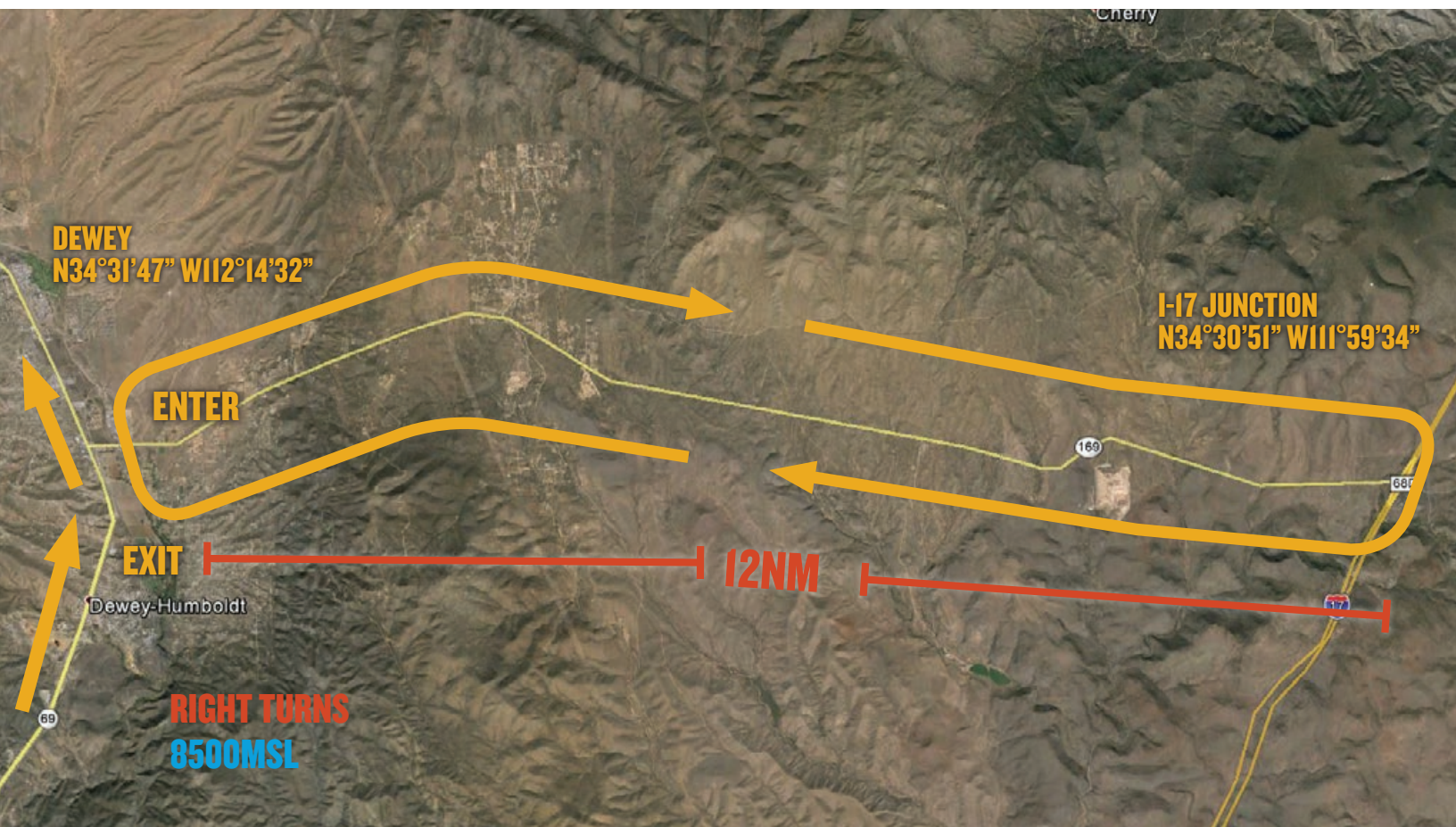
ATIS: 127.2 TOWER 3L/21R: 128.75; 3R/21L: 125.3 GROUND 3L/21R: 119.25; 3R/21L: 121.7 CTAF: 125.3

DEWEY HOLD



ATIS: 127.2 TOWER 3L/2IR: 128.75; 3R/2IL: 125.3 GROUND 3L/2IR: 119.25; 3R/2IL: 121.7 CTAF: 125.3

DEWEY HOLD



ATIS: 127.2 TOWER 3L/2IR: 128.75; 3R/2IL: 125.3 GROUND 3L/2IR: 119.25; 3R/2IL: 121.7 CTAF: 125.3

IFR DELAYS

IFR arrivals will be integrated with VFR traffic. However IFR separation requirements may cause delays when arrival rates exceed airport capacity. Pilots on an IFR flight plan should be prepared for potential holding at Ernest A Love Field Airport. IFR flight plans to Ernest A Love Field Airport should be filed at least 2 hours prior to proposed departure time.

TEMPORARY ERNEST A LOVE FIELD AIRPORT CLOSURE FOR AEROBATIC DEMONSTRATION

There will be an aerobatic demonstration between 12:00 Noon-1:00 PM local on Saturday, October 1, 2016 during the AOPA Fly-in. Arrivals and departures will be stopped for the duration of the demonstration. Please plan accordingly.

LOCAL TRAINING AND PRACTICE APPROACHES

Local traffic pattern, closed traffic training, and practice instrument approaches **may not** be available at Ernest A Love Field Airport during the AOPA Fly-In.

CAUTIONS

High density traffic during peak hours (8:00 AM-11:00 AM) of Fly-In at Ernest A Love Field Airport (PRC).

High elevation; Density altitude

Bagdad 1 MOA; 27 NM southwest of Ernest A Love Field Airport (PRC)

Gladden 1 MOA; 25 NM southwest of Ernest A Love Field Airport (PRC)

Alert Area A-231; Concentrated student jet transition training; 42 NM south of Ernest A Love Field Airport (PRC)

Class B Airspace; Phoenix Sky Harbor International Airport (PHX)

Restricted Area R-2302; 41 NM northeast of Ernest A Love Field Airport (PRC)

TFRs for firefighting aircraft operations; check NOTAMs

FREQUENCY INFORMATION

ERNEST A LOVE FIELD AIRPORT (PRC) FREQUENCIES

Prescott ATIS	127.2
ATIS Telephone Number	928.717.1287
Prescott Tower—Runway 3L/21R	128.75
Prescott Tower—Runway 3R/21L	125.3
Prescott Ground—Runway 3R/21L	121.7
Prescott Ground—Runway 3L/21R	119.25
Prescott CTAF	125.3
Prescott UNICOM	122.95

ENROUTE FREQUENCIES

Phoenix TRACON—Ash Fork Arrival	126.37
Phoenix TRACON—Cordes Junction Arrival	133.57

WAYPOINT INFORMATION

SPECIFIC LATITUDE/LONGITUDE COORDINATES

Arrivals Over Ash Fork

Ash Fork High School	N35°13'17"/W112° 29'08"
Paulden	N34°53'08"/W112° 28'03"
Chino Valley High School	N34°44'48"/W112° 27'16"
Drake VORTAC	N34°42'09"/W112° 28'49"
Ernest A Love Field Airport (PRC)	N34°39'16"/W112° 25'11"

Arrivals Over Cordes Junction

Cordes Junction	N34°19'42"/W112° 07'19"
Dewey	N34°31'47"/W112° 14'32"
Intersection: Road Splits/Route 69 and Fain Road	N34°33'42"/W112°15'34"
Yavapai County Fairgrounds: 3R/3L In Use	N34°38'50"/W112° 16'39"
Crossroads Shopping Center: 21R/21L In Use	N34°34'33"/W112° 21'56"
Watson Lake	N34°35'20"/W112° 25'03"
Ernest A Love Field Airport (PRC)	N34°39'16"/W112° 25'11"

GENERAL INFORMATION

ERNEST A LOVE FIELD AIRPORT (PRC)



ATIS: 127.2 TOWER 3L/21R: 128.75; 3R/21L: 125.3 GROUND 3L/21R: 119.25; 3R/21L: 121.7 CTAF: 125.3

EXPECTED SURFACE CLOSURES

- Runway 12/30
- Taxiways E, F (west of taxiway C)

PARKING AREAS

- When operating in the parking areas, pilots are encouraged to be extra alert for taxiing aircraft, aircraft with engine(s) running, and vehicle/pedestrian traffic.
- Marshalls will be assisting aircraft to and from parking areas and run-up areas.
- For safety reasons, high RPM engine running is prohibited in designated parking areas. For departure, it is recommended that pilots conduct their run-up procedures in queue if practical.
- Please review the parking map prior to landing and departure.

VEHICULAR TRAFFIC

- Vehicles are not allowed on ramps except those belonging to airport operators and tenants, and exhibitors participating in the AOPA Ernest A Love Field Airport Fly-In.

PRE-FLIGHT PLANNING

- Please ensure that you have reviewed the special flight information, departure procedures, and temporary taxi procedures prior to engine start.
- High traffic density is expected Saturday morning and afternoon. Consider arriving during off-peak hours.

DEPARTURE PROCEDURES

ERNEST A LOVE FIELD AIRPORT (PRC)

IFR DEPARTURES

Follow marshalls instructions to taxi to the nearest designated IFR departure holding area. IFR departures should obtain a clearance from Prescott Ground on **119.25** when ready for departure. **DO NOT CONTACT PRESCOTT GROUND ON 119.25 UNTIL YOU ARE READY TO DEPART.**

VFR DEPARTURES

VFR Flight Following: Pilots wanting VFR flight-following should make the request to Phoenix Approach on the appropriate frequency when clear of Class D airspace.

Contact Phoenix Approach on **126.37** if departure heading is between the Drake VORTAC 340 degree radial and the 110 degree radial; clockwise.

Contact Phoenix Approach on **133.57** if departure heading is between the Drake VORTAC 111 degree radial and the 339 degree radial; clockwise.

VFR Traffic Advisories/Flight Following will be provided on a workload-permitting basis.

Prior to Start-up: Please ensure that you have reviewed the special flight information, departure procedures, and temporary taxi procedures prior to engine start. Check ATIS on **127.2**.

Engine Start: Locate a marshaller to monitor engine start.

Run-up: If practical, it is recommended that you conduct your run-up while in queue for departure. Please consider propeller blast during your run-up. For noise abatement, do not conduct run ups on TWY D1 prior to 8:00 AM local.

Taxi: Contact Prescott Ground on **121.7** or **119.25** when ready to taxi.

Departure:

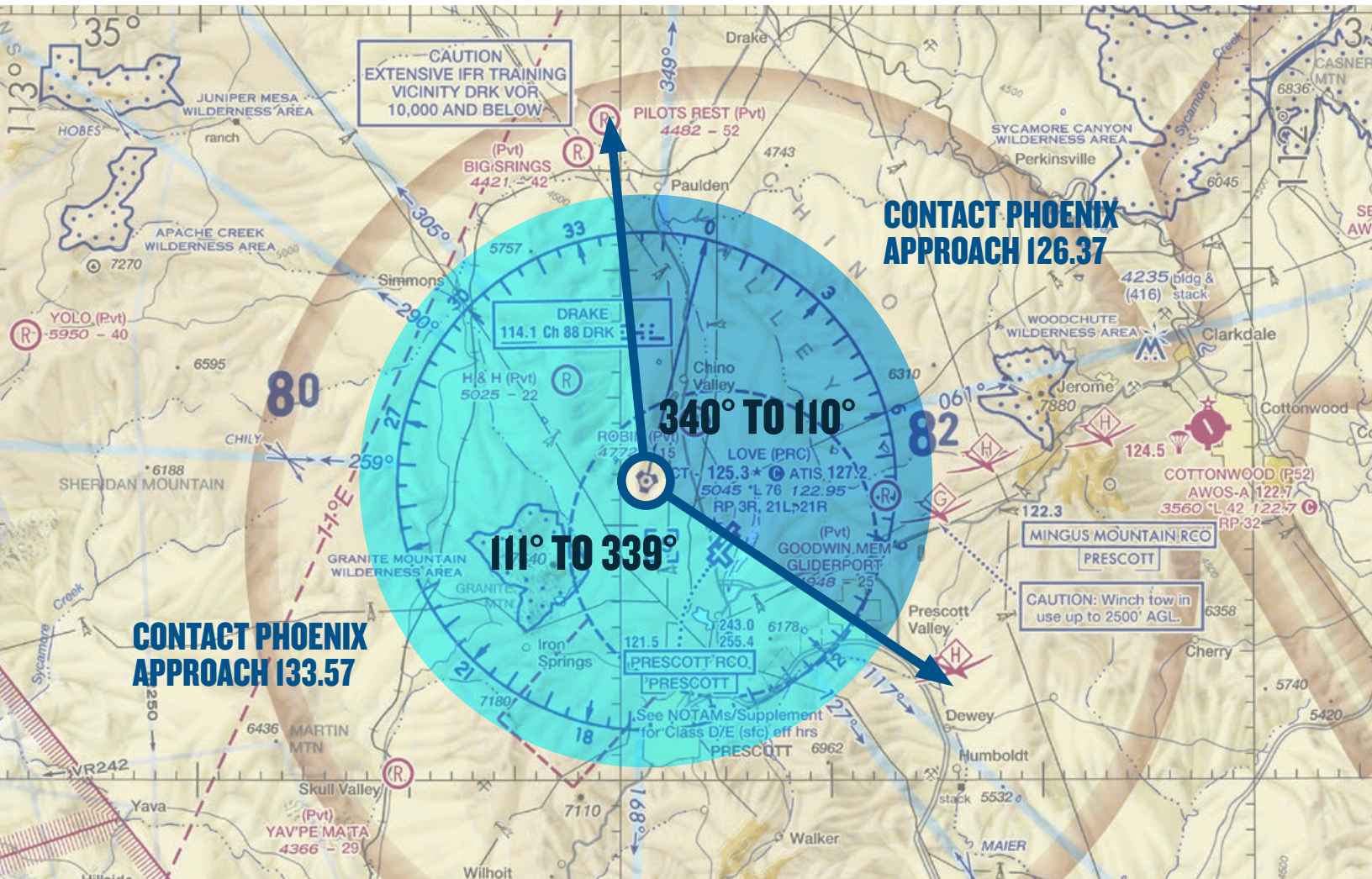
If departing runway 3R or 21L, CONTACT Prescott Tower on 125.3 when number 1 for departure. Be prepared for immediate take-off.

If departing runway 3L or 21R, CONTACT Prescott Tower on 128.75 when number 1 for departure. Be prepared for immediate take-off.

***Fly runway heading until advised otherwise by Prescott Tower or when leaving Class D airspace then turn on course at pilot's discretion.**

AFTER DEPARTURE

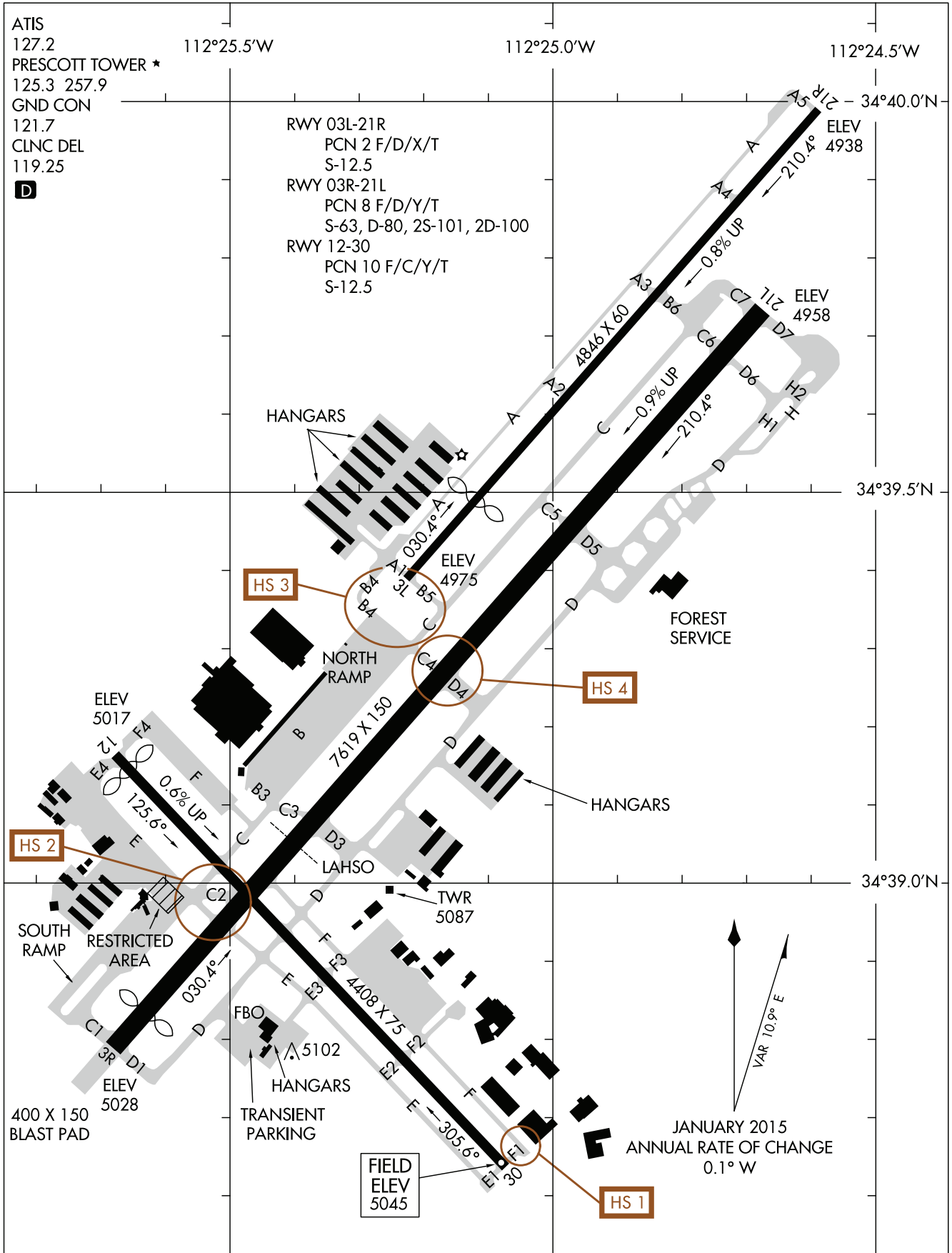
VFR FLIGHT FOLLOWING FREQUENCIES



ATIS: 127.2 TOWER 3L/2IR: 128.75; 3R/2IL: 125.3 GROUND 3L/2IR: 119.25; 3R/2IL: 121.7 CTAF: 125.3

AIRPORT DIAGRAM

ERNEST A LOVE FIELD AIRPORT (PRC)



ATIS: 127.2 TOWER 3L/21R: 128.75; 3R/21L: 125.3 GROUND 3L/21R: 119.25; 3R/21L: 121.7 CTAF: 125.3

ADDITIONAL INFORMATION

PRESCOTT PILOT INFORMATION PACKET

NO RADIO AIRCRAFT

Aircraft operations without a radio are not recommended.

STUDENT PILOTS

Due to high traffic volumes and airspace congestion, we highly recommend that student pilots be accompanied by either a flight instructor or an experienced pilot.

AOPA FLY-IN HOST FBO AT ERNEST A LOVE FIELD AIRPORT (PRC)

The AOPA Fly-In Host FBO at Ernest A Love Field Airport (PRC) is Legend Aviation. We thank them for their support, enthusiasm, and participation in the AOPA Fly-In at PRC.



LEGEND AVIATION

Legend Aviation

2020 Clubhouse Drive
Prescott, AZ 86301

Hours of operation:
Monday-Sunday 7:00 AM – 8:00 PM

Phone: 928-443-9333

Fax: 928-443-0573

Email: info@legend-aviation.com

Website: www.legend-aviation.com

PARKING AND SERVICE DETAILS

Fuel/oil orders will be taken at the time your aircraft is parked. If you need either, please make sure to make the request at that time. Orders made at a later time might delay your departure. Credit card information will be requested at the time the order is placed. Receipts if requested will be emailed or available in the FBO. Order slip will be attached to propeller. If you are uncomfortable providing credit card information on the ramp, you can provide the information directly to the FBO's front desk.

CHOCKS AND TIE DOWNS

Chocks will be available in **limited quantities** so we highly recommend that you bring your own. Tie down hooks are scattered on the ramp and parking on tie down spaces is unlikely. It is recommended that you bring tie-downs and anchors for any additional aircraft securing needs.

CAMPING

Aircraft camping will be permitted at Ernest A Love Field Airport (PRC) on Friday, September 30 and Saturday, October 1, 2016. Space is limited and will be available on a first-come, first-served basis. There is no charge. **If you plan to camp, you must RSVP ahead of time.** A confirmation will be sent with additional information. Camping aircraft will be requested to prominently display the letter C in the windshield. **See the AOPA website for more information.**

AFTER-HOURS DEPARTURES

If you will be departing after the airport's normal operating hours please contact the after-hours Line Service number at 928-443-9333. An after-hours callout is subject to an additional fee.

RENTAL CAR AVAILABILITY



Phone: 866-315-9155

Also available: Hertz and Budget.

OTHER AREA AIRPORTS

There are several public use airports that are within an easy drive of Ernest A Love Field Airport (PRC). You might elect to use one of these airports in the event aircraft parking reaches capacity at PRC. Rental cars are also available at many of these airports. Please contact the airport directly for more information.



COTTONWOOD AIRPORT (P52) is located 19 NM northeast of Ernest A Love Field Airport (PRC) and is approximately a 50 minute drive to PRC. Cottonwood Airport has one hard surface runway. 14/32 is 4252 X 75. The airspace is Class G. Check with the airport for rental car availability. 928-340-2777.



SEDONA AIRPORT (SEZ) is located 33 NM northeast of Ernest A Love Field Airport (PRC) and is approximately a 90 minute drive to PRC. Sedona

Airport has one hard surface runway. 03/21 is 5132 X 100. The airspace is Class G. Check with the airport for rental car availability. 928-282-4487.



H A CLARK MEMORIAL FIELD AIRPORT (CMR) is located 40 NM northeast of Ernest A Love Field Airport (PRC) and is approximately a 70 minute drive to PRC. H A Clark Memorial Field Airport has one hard surface runway. 18/36 is 6000 X 100. The

airspace is Class G. Check with the airport for rental car availability. 928-635-1280.

LOW TRANSITION DEPARTURES ARE A NO-NO! PLEASE DEPART USING A NORMAL CLIMBOUT



LANDING 3R—ERNEST A LOVE FIELD AIRPORT (PRC)



LANDING 3L—ERNEST A LOVE FIELD AIRPORT (PRC)



LANDING 21R—ERNEST A LOVE FIELD AIRPORT (PRC)



LANDING 21L—ERNEST A LOVE FIELD AIRPORT (PRC)



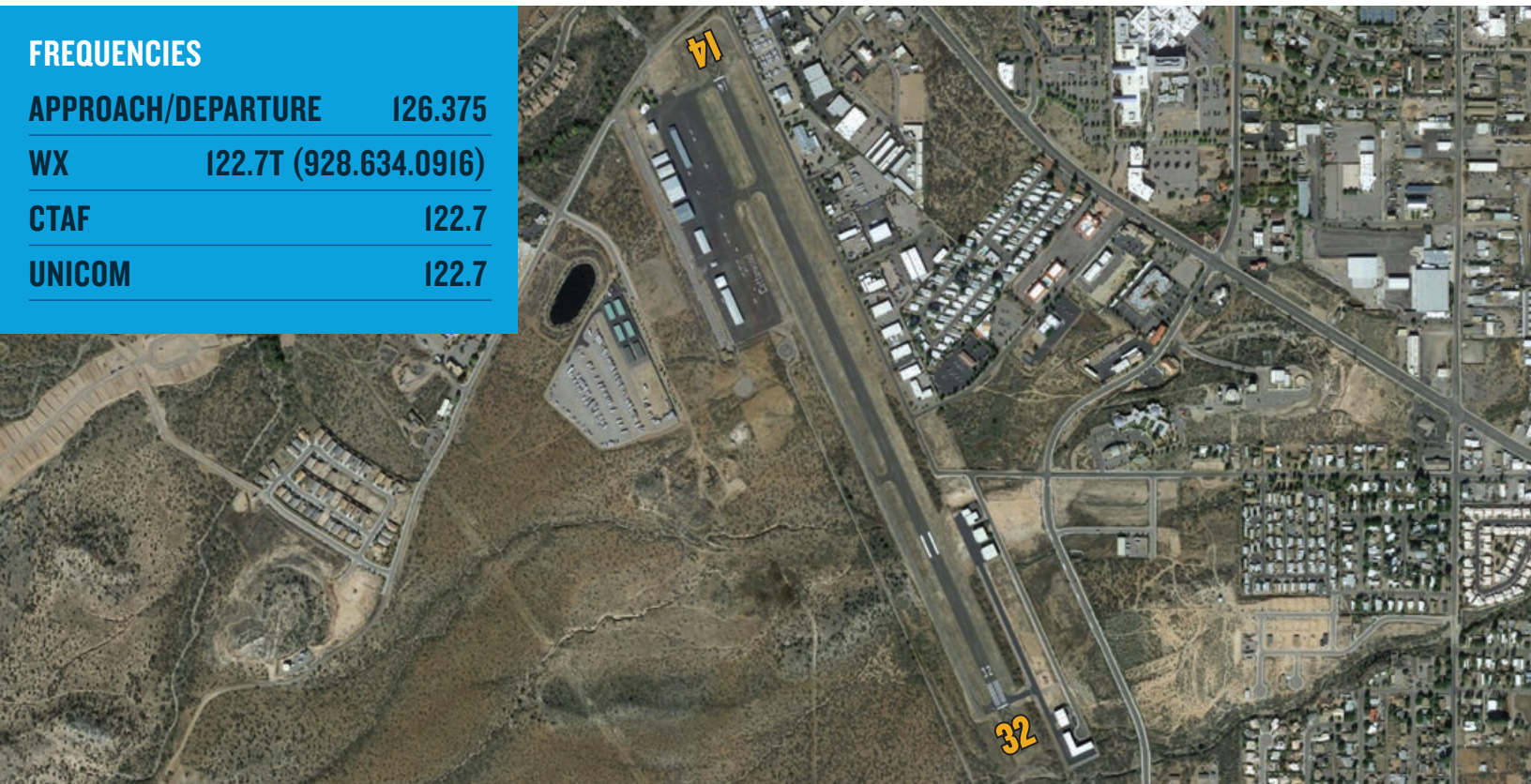
SHOW CENTER—LOOKING SOUTHWEST



COTTONWOOD AIRPORT (P52)

FREQUENCIES

APPROACH/DEPARTURE	126.375
WX	122.7T (928.634.0916)
CTAF	122.7
UNICOM	122.7



SEDONA AIRPORT (SEZ)

FREQUENCIES

APPROACH/DEPARTURE	126.375
WX	118.525T (928.282.1993)
CTAF	123.0
UNICOM	123.0



H A CLARK MEMORIAL FIELD AIRPORT (CMR)

FREQUENCIES

WX	121.125T (928.635.1278)
CTAF	122.8
UNICOM	122.8



AOPA FLY-IN

ERNEST A LOVE FIELD AIRPORT (PRC)

SEPT 30 - OCT 1 | PRESCOTT, AZ



PRINT & PLACE GRAPHIC IN AIRCRAFT WINDSHIELD