

# AOPA FLY-IN

ERNEST A LOVE FIELD AIRPORT (PRC)

# NOTAM

SEPT 30 - OCT 1 | PRESCOTT, AZ

|||||

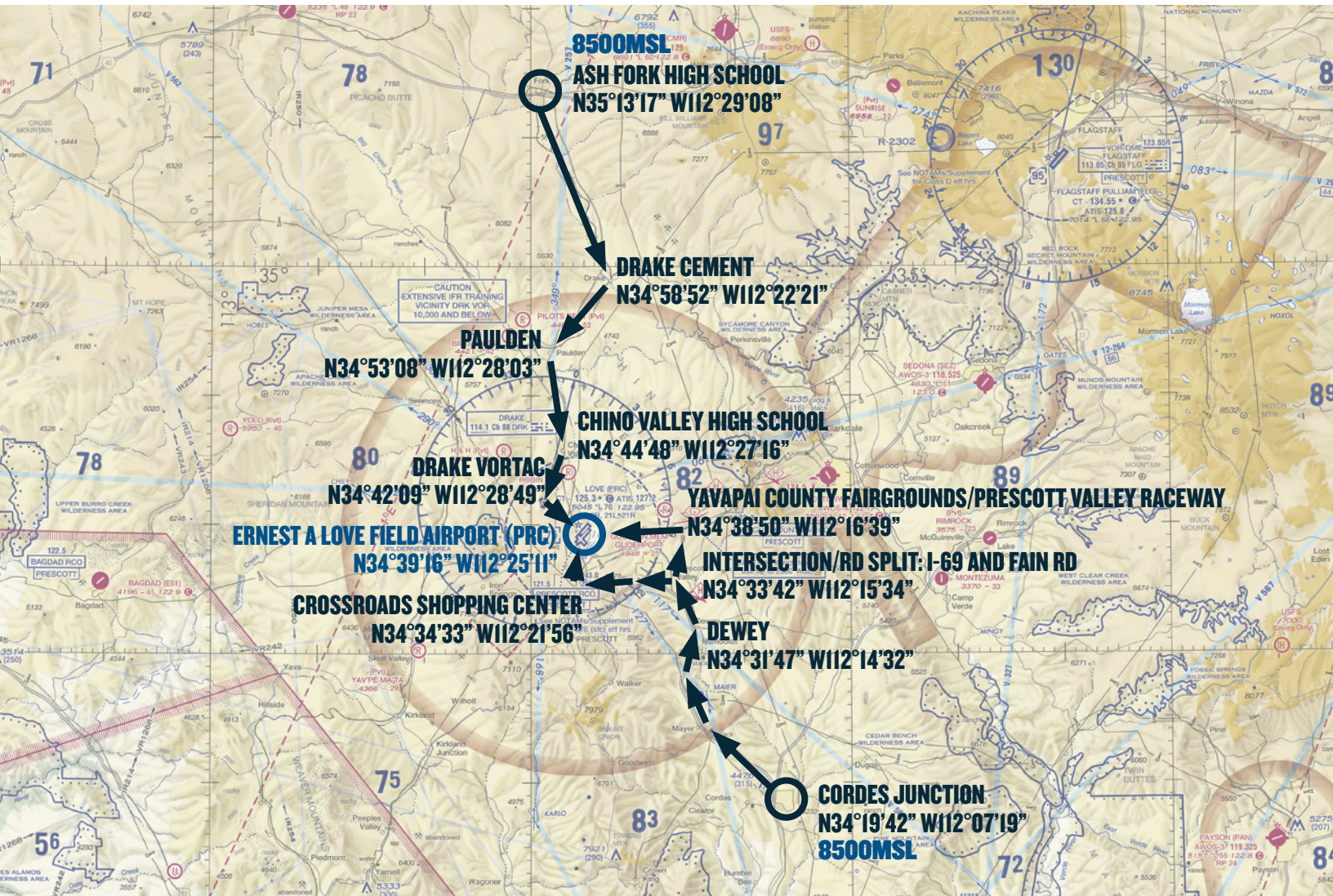
## SPECIAL FLIGHT PROCEDURES EFFECTIVE

12:00 Noon MST until 6:00 PM MST Friday, September 30, 2016

7:00 AM MST until 6:00 PM MST Saturday, October 1, 2016



# VFR ARRIVALS OVERVIEW



ATIS: 127.2    TOWER 3L/2IR: 128.75; 3R/2IL: 125.3    GROUND 3L/2IR: 119.25; 3R/2IL: 121.7    CTAF: 125.3

## TEMPORARY VFR PROCEDURES

Specific procedures contained within this NOTAM may be revised at the time of the event. Pilots are urged to review all applicable NOTAMs and arrival/departure procedures prior to conducting a flight to Ernest A Love Field Airport. Users are encouraged to check NOTAMs frequently to verify they possess the most current revisions. This NOTAM does not supersede restrictions pertaining to the use of airspace contained in FDC NOTAMS.

## VFR ARRIVALS

All VFR arrivals must begin over:

1. Ash Fork, 35 NM northwest of Ernest A Love Field Airport (PRC), or
2. Cordes Junction, 24 NM southeast of Ernest A Love Field Airport (PRC)



# VFR PROCEDURES

## ARRIVALS OVER ASH FORK



**ATIS: 127.2    TOWER 3L/21R: 128.75; 3R/21L: 125.3    GROUND 3L/21R: 119.25; 3R/21L: 121.7    CTAF: 125.3**

### CHECK PRESCOTT ATIS ON 127.2 AS SOON AS PRACTICAL.

This procedure begins over Ash Fork, AZ at 8500 feet MSL. If not already in communication with ATC, contact Phoenix Approach on **126.37** prior to arriving over Ash Fork. Do not proceed beyond Ash Fork until in contact with Phoenix Approach.

#### Caution: Stay alert for converging traffic.

From Ash Fork, follow Route 89 south toward Prescott, AZ. In the event that traffic volume requires holding, follow the hold procedure as depicted in the *Cement Hold* graphic. All aircraft should fly left turns at 8500 feet MSL. When holding is no longer required, aircraft should complete the hold and then continue south following Route 89 toward the town of Chino Valley. Phoenix Approach will advise when to switch to Prescott Tower (**128.75**).

#### Caution: Stay alert for other traffic in the hold as well as traffic arriving from the north along Route 89.

Report to Prescott Tower on **128.75** when passing Chino Valley High School, just east of Route 89 in Chino Valley. (See *Chino Valley High School* graphic) Example. "Prescott Tower, Skyhawk 1234 passing Chino Valley High School, 6500, inbound with ATIS code." Begin descent to pattern altitude at pilot's discretion.

#### PRC TPA: 6045 feet MSL light aircraft; 6545 feet MSL large/turbine aircraft

Proceed from Chino Valley High School to the Drake VORTAC; approximately 3 NM on a heading of 206°. From the Drake VORTAC, proceed to Ernest A Love Field Airport (PRC); approximately 4 NM on a heading of 125°. Expect to enter a midfield downwind for either 21R or 3L or as instructed by Prescott Tower on **128.75**.

After landing, exit the runway as quickly and as safely as possible. Do not stop on the runway unless absolutely necessary. Contact Prescott Ground on **119.25** when clear of the runway and follow taxi instructions to the designated parking areas. Marshalls will direct aircraft to parking.



# ASH FORK HIGH SCHOOL



ATIS: 127.2 TOWER 3L/2IR: 128.75; 3R/2IL: 125.3 GROUND 3L/2IR: 119.25; 3R/2IL: 121.7 CTAF: 125.3

# CHINO VALLEY HS TO DRAKE VORTAC TO PRC



ATIS: 127.2 TOWER 3L/2IR: 128.75; 3R/2IL: 125.3 GROUND 3L/2IR: 119.25; 3R/2IL: 121.7 CTAF: 125.3



# CHINO VALLEY HIGH SCHOOL



ATIS: 127.2 TOWER 3L/2IR: 128.75; 3R/2IL: 125.3 GROUND 3L/2IR: 119.25; 3R/2IL: 121.7 CTAF: 125.3



## CEMENT HOLD



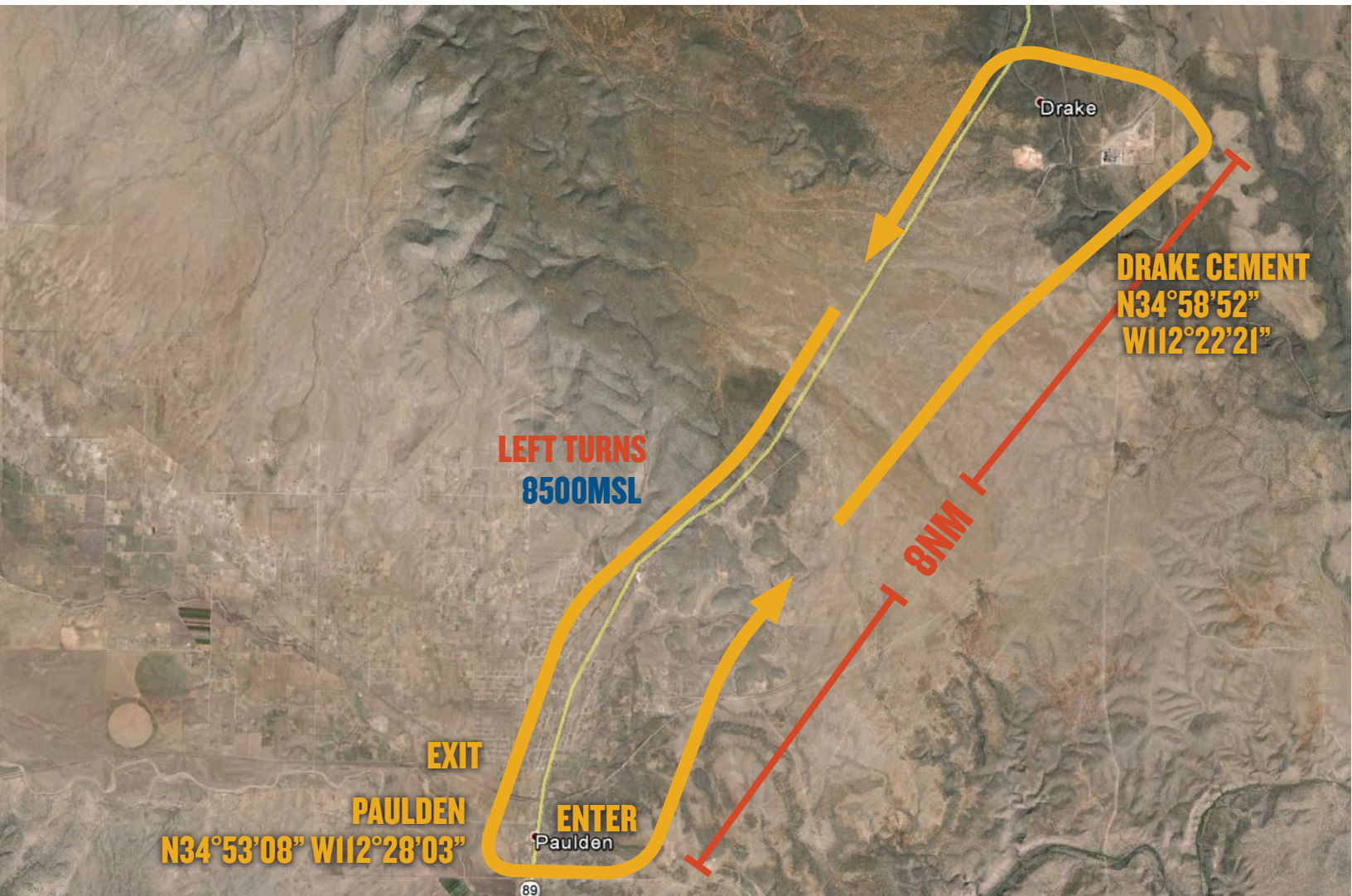
ATIS: 127.2

TOWER 3L/2IR: 128.75; 3R/2IL: 125.3

GROUND 3L/2IR: 119.25; 3R/2IL: 121.7

CTAF: 125.3

## CEMENT HOLD



ATIS: 127.2

TOWER 3L/2IR: 128.75; 3R/2IL: 125.3

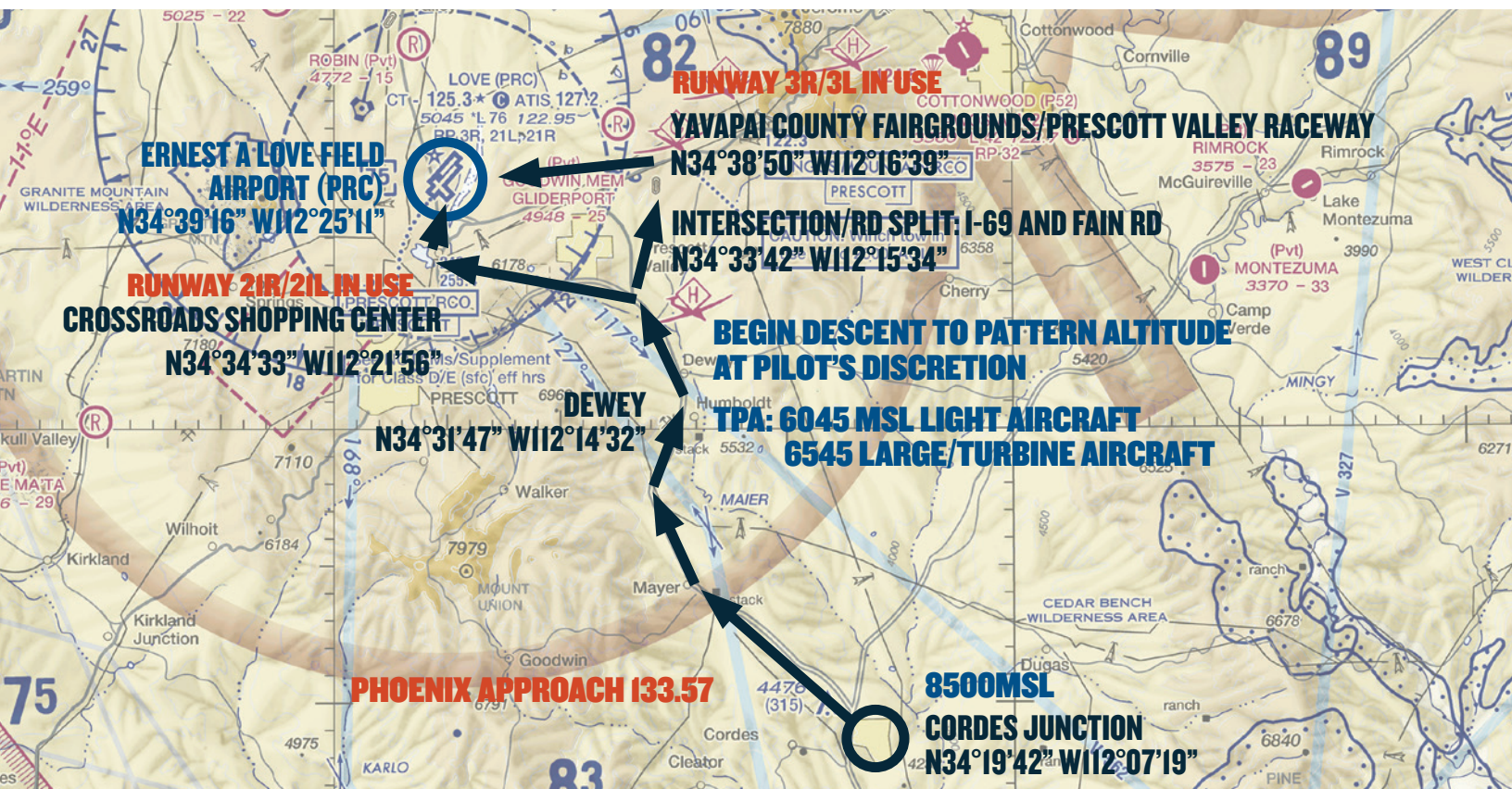
GROUND 3L/2IR: 119.25; 3R/2IL: 121.7

CTAF: 125.3



# VFR PROCEDURES

## ARRIVALS OVER CORDES JUNCTION



### CHECK PRESCOTT ATIS ON 127.2 AS SOON AS PRACTICAL.

This procedure begins over Cordes Junction, AZ at 8500 feet MSL. If not already in communication with ATC, contact Phoenix Approach on **133.57** prior to arriving over Cordes Junction. Do not proceed beyond Cordes Junction until in contact with Phoenix Approach.

### Caution: Stay alert for converging traffic

From Cordes Junction, follow Route 69 north toward Prescott, AZ. In the event that traffic volume requires holding, follow the hold procedure as depicted in the *Dewey Hold graphic*. All aircraft should fly right turns at 8500 feet MSL. When holding is no longer required, aircraft should complete the hold and then continue north from the town of Dewey following Route 69. Expect to be advised by Phoenix Approach to switch to Prescott Tower (**125.3**) at or near the golf courses where Route 69 and Fain Road intersect.

**Caution: Stay alert for other traffic in the hold as well as traffic arriving from the south along route 69.**

**At the golf courses, follow directions below depending on runway in use.** (See *Highway Split: Cordes Junction Arrival graphic*)

**If 3R/3L are in use**, follow Fain Road northwest toward the Yavapai County Fairgrounds/Prescott Valley Raceway. (5 NM/348°). From Yavapai County Fairgrounds, Ernest A Love Field Airport (PRC) is approximately 7 NM on a heading 270°. Report to Prescott Tower on **125.3** when inbound from Yavapai County Fairgrounds to Ernest A Love Field Airport (PRC). Example. "Prescott Tower, Skyhawk 1234 over fairgrounds, 6500, inbound with ATIS code." Begin descent to pattern altitude at pilot's discretion. Expect to enter a midfield right downwind for runway 3R or as instructed by Prescott Tower on **125.3**.

**PRC TPA: 6045 feet MSL light aircraft; 6545 feet MSL large/turbine aircraft**

**If 21R/21L are in use**, follow Route 69 as it turns toward the west. Continue along Route 69 for approximately 6.5 miles until reaching

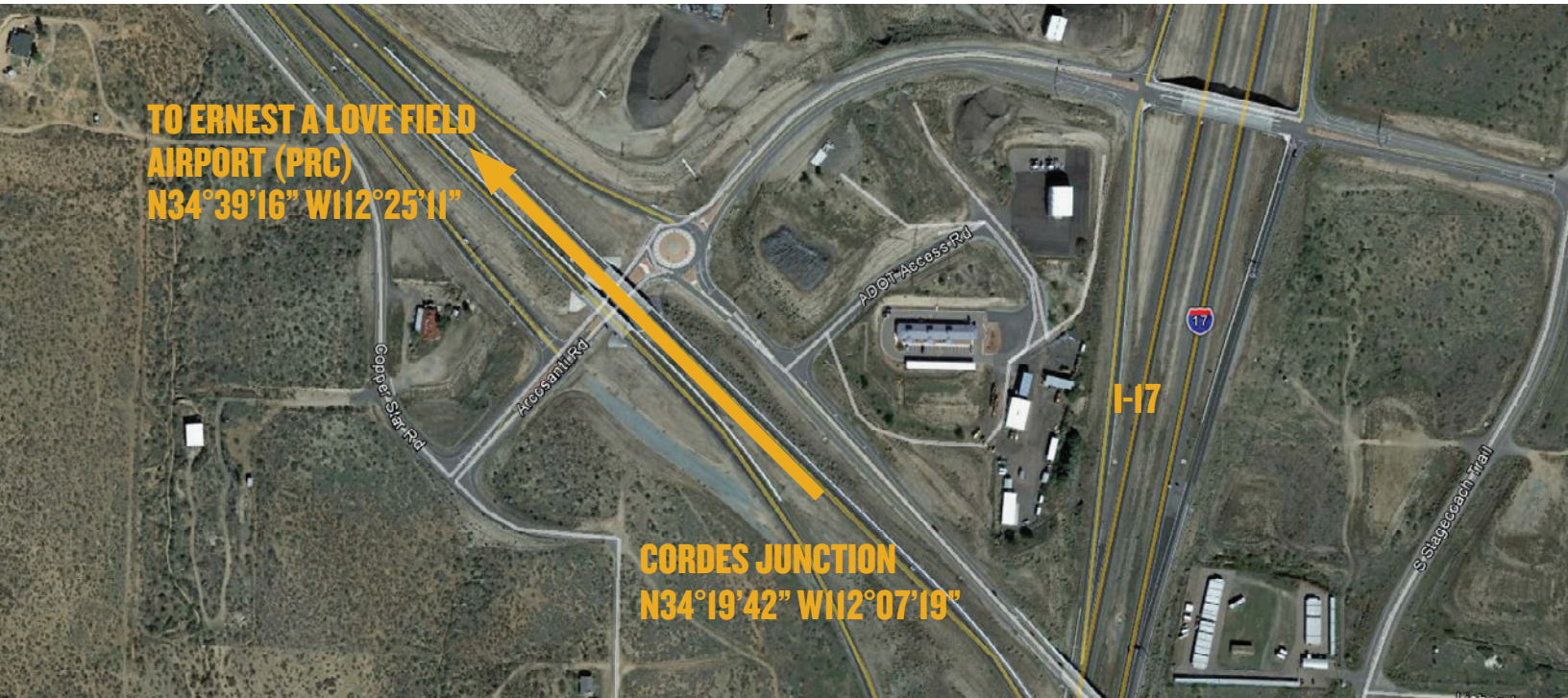
the Crossroads Shopping Center. From the Crossroads Shopping Center fly direct to Watson Lake; approximately 3 NM on a heading of 285°. Report to Prescott Tower on **125.3** when over Watson Lake inbound to Ernest A Love Field Airport (PRC). Example. "Prescott Tower, Skyhawk 1234 over Watson Lake, 7000, inbound with ATIS code." Begin descent to pattern altitude at pilot's discretion. From Watson Lake, Ernest A Love Field Airport (PRC) is approximately 4 NM on a heading of 355°. Expect to enter a midfield left downwind for runway 21L or as instructed by Prescott Tower on **125.3**.

**PRC TPA: 6045 feet MSL light aircraft; 6545 feet MSL large/turbine aircraft**

After landing, exit the runway as quickly and as safely as possible. Do not stop on the runway unless absolutely necessary. Contact Prescott Ground on **121.7** when clear of the runway and follow taxi instructions to the designated parking areas. Marshalls will direct aircraft to parking.

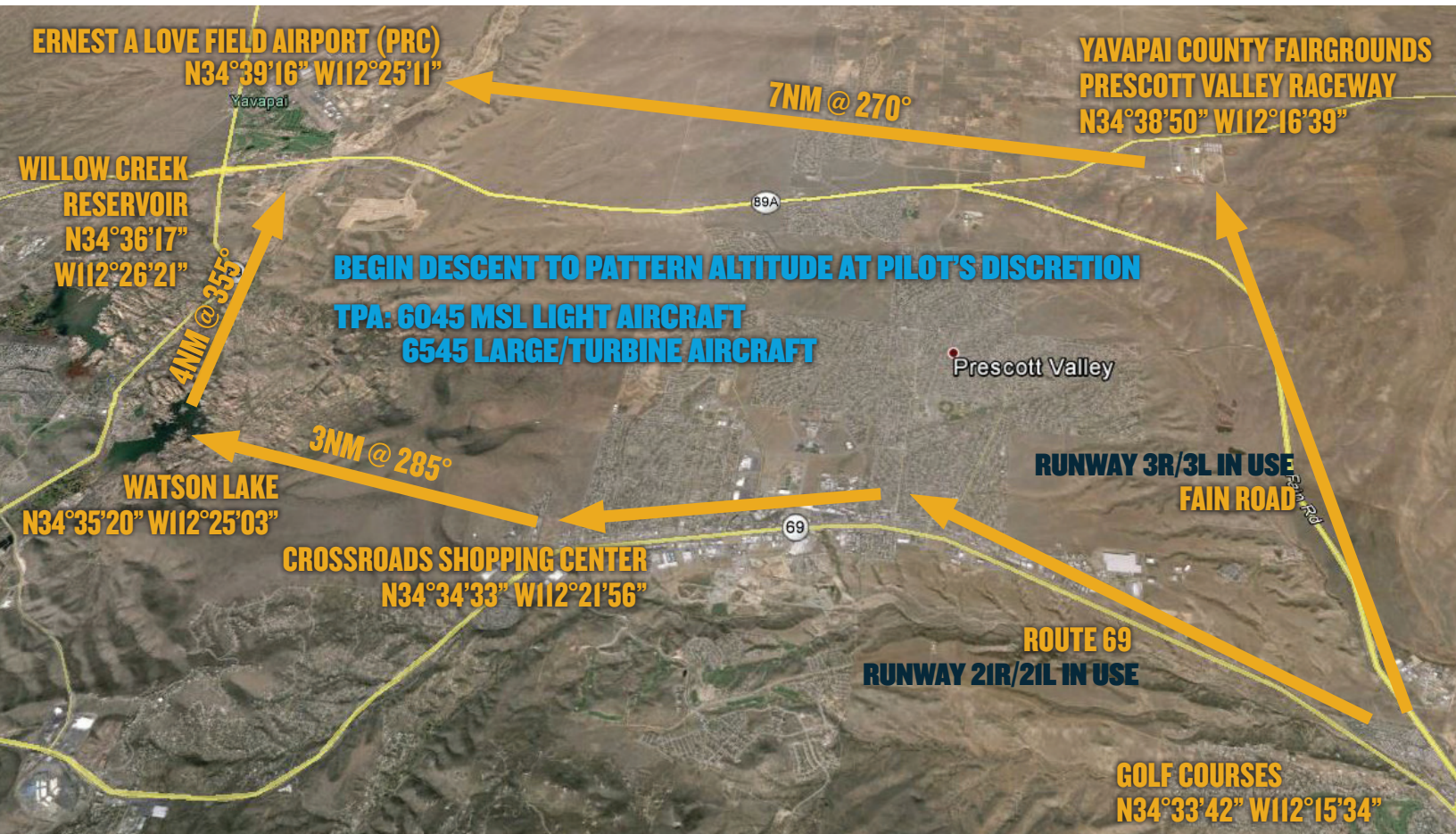


## CORDES JUNCTION



**ATIS: 127.2    TOWER 3L/2IR: 128.75; 3R/2IL: 125.3    GROUND 3L/2IR: 119.25; 3R/2IL: 121.7    CTAF: 125.3**

## CORDES JUNCTION ARRIVAL—HIGHWAY SPLIT



ATIS: 127.2    TOWER 3L/2IR: 128.75; 3R/2IL: 125.3    GROUND 3L/2IR: 119.25; 3R/2IL: 121.7    CTAF: 125.3



# CORDES JUNCTION ARRIVAL—2IR/2IL IN USE



ATIS: 127.2 TOWER 3L/2IR: 128.75; 3R/2IL: 125.3 GROUND 3L/2IR: 119.25; 3R/2IL: 121.7 CTAF: 125.3

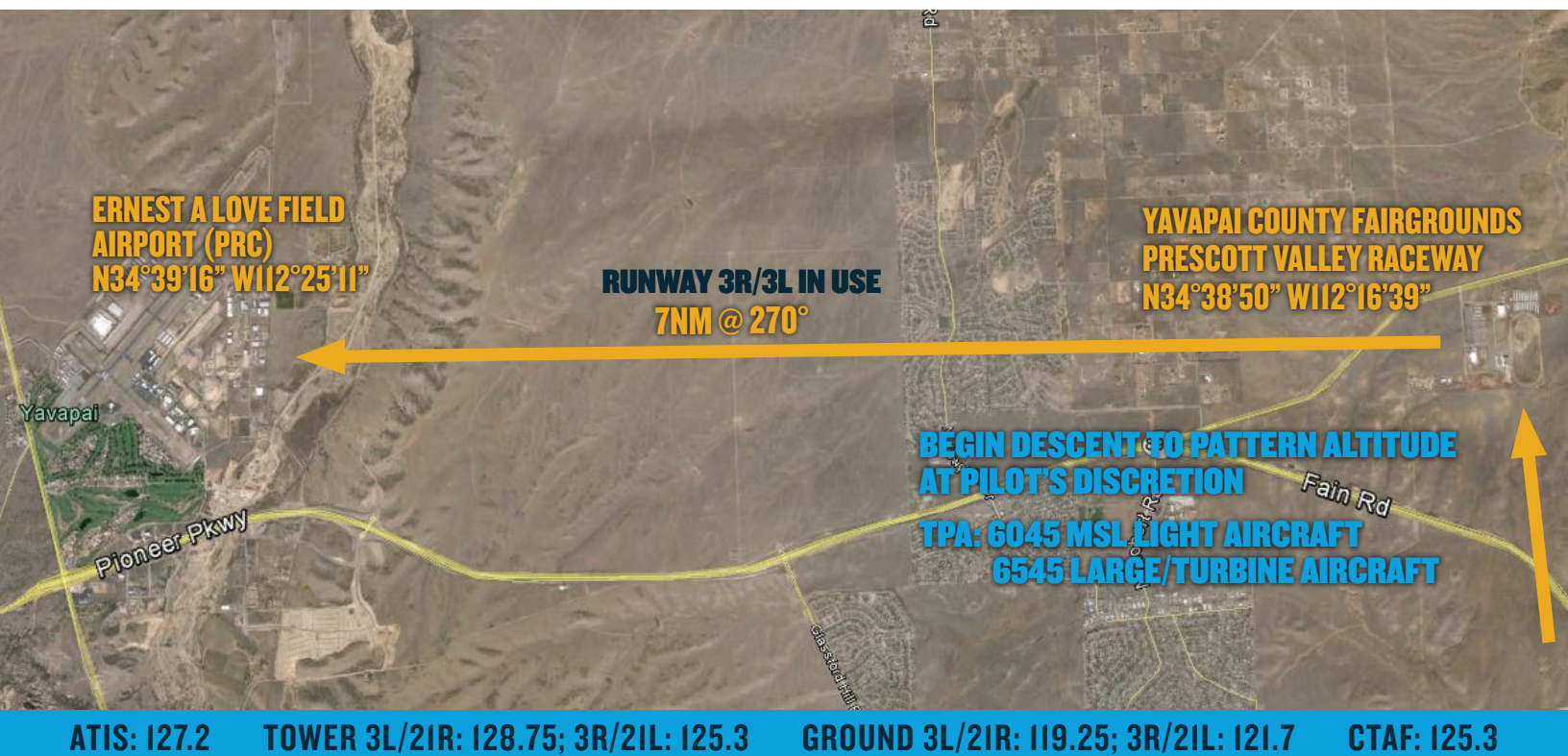
# CROSSROADS SHOPPING CENTER ON ROUTE 69



ATIS: 127.2 TOWER 3L/2IR: 128.75; 3R/2IL: 125.3 GROUND 3L/2IR: 119.25; 3R/2IL: 121.7 CTAF: 125.3



## CORDES JUNCTION ARRIVAL—3R/3L IN USE

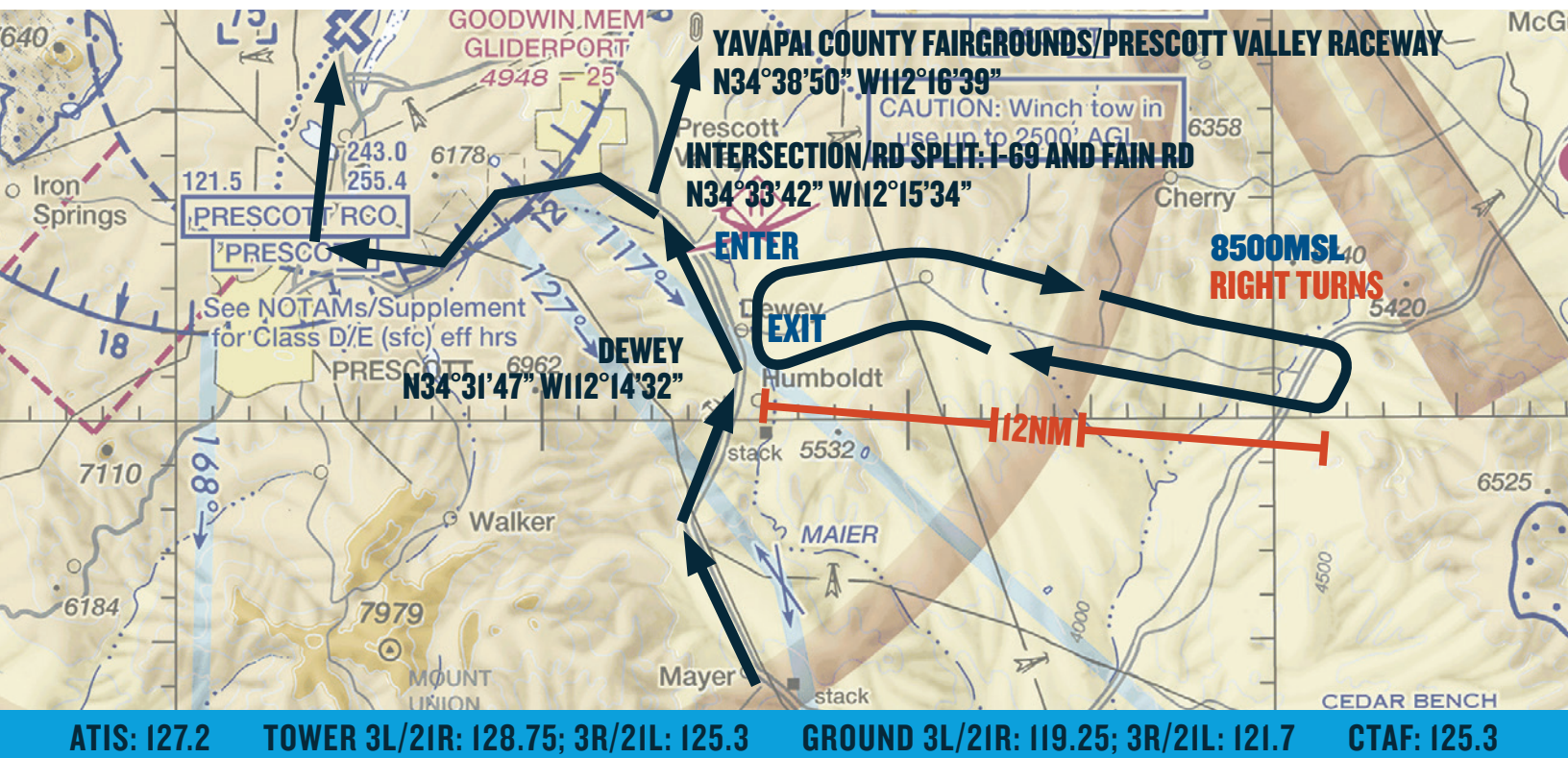


## YAVAPAI CO FAIRGROUNDS/PRESCOTT VALLEY RACEWAY

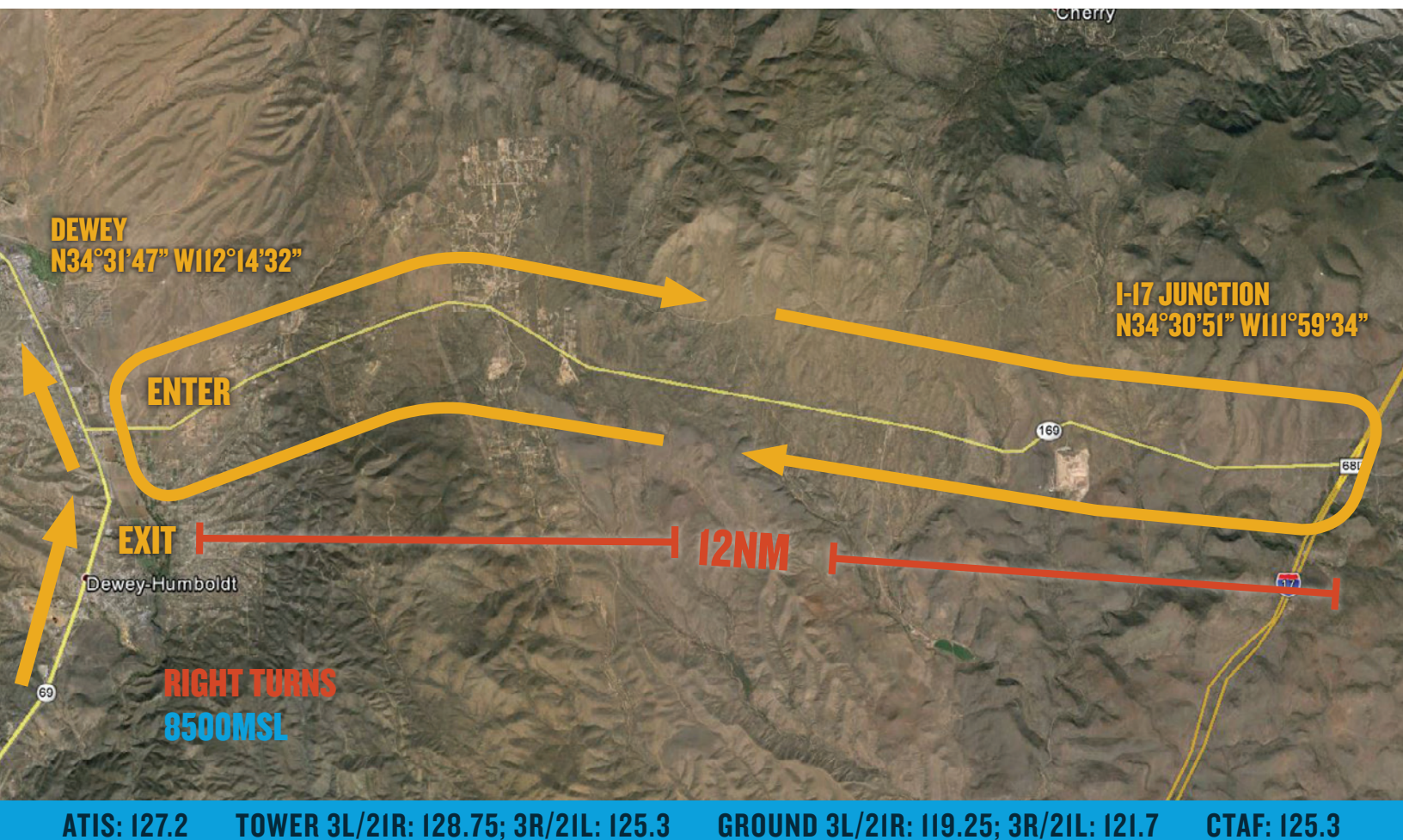




## DEWEY HOLD



## DEWEY HOLD





## IFR DELAYS

IFR arrivals will be integrated with VFR traffic. However IFR separation requirements may cause delays when arrival rates exceed airport capacity. Pilots on an IFR flight plan should be prepared for potential holding at Ernest A Love Field Airport. IFR flight plans to Ernest A Love Field Airport should be filed at least 2 hours prior to proposed departure time.

## TEMPORARY ERNEST A LOVE FIELD AIRPORT CLOSURE FOR AEROBATIC DEMONSTRATION

There will be an aerobatic demonstration between 12:00 Noon-1:00 PM local on Saturday, October 1, 2016 during the AOPA Fly-in. Arrivals and departures will be stopped for the duration of the demonstration. Please plan accordingly.

## LOCAL TRAINING AND PRACTICE APPROACHES

Local traffic pattern, closed traffic training, and practice instrument approaches **may not** be available at Ernest A Love Field Airport during the AOPA Fly-In.

## CAUTIONS

**High density traffic during peak hours** (8:00 AM-11:00 AM) of Fly-In at Ernest A Love Field Airport (PRC).

**High elevation;** Density altitude

**Bagdad 1 MOA;** 27 NM southwest of Ernest A Love Field Airport (PRC)

**Gladden 1 MOA;** 25 NM southwest of Ernest A Love Field Airport (PRC)

**Alert Area A-231;** Concentrated student jet transition training; 42 NM south of Ernest A Love Field Airport (PRC)

**Class B Airspace;** Phoenix Sky Harbor International Airport (PHX)

**Restricted Area R-2302;** 41 NM northeast of Ernest A Love Field Airport (PRC)

**TFRs** for firefighting aircraft operations; check NOTAMs

## FREQUENCY INFORMATION

### ERNEST A LOVE FIELD AIRPORT (PRC) FREQUENCIES

Prescott ATIS	127.2
ATIS Telephone Number	928.717.1287
Prescott Tower—Runway 3L/21R	128.75
Prescott Tower—Runway 3R/21L	125.3
Prescott Ground—Runway 3R/21L	121.7
Prescott Ground—Runway 3L/21R	119.25
Prescott CTAF	125.3
Prescott UNICOM	122.95

### ENROUTE FREQUENCIES

Phoenix TRACON—Ash Fork Arrival	126.37
Phoenix TRACON—Cordes Junction Arrival	133.57



# WAYPOINT INFORMATION

## SPECIFIC LATITUDE/LONGITUDE COORDINATES

### Arrivals Over Ash Fork

Ash Fork High School	N35°13'17"/W112° 29'08"
Paulden	N34°53'08"/W112° 28'03"
Chino Valley High School	N34°44'48"/W112° 27'16"
Drake VORTAC	N34°42'09"/W112° 28'49"
Ernest A Love Field Airport (PRC)	N34°39'16"/W112° 25'11"

### Arrivals Over Cordes Junction

Cordes Junction	N34°19'42"/W112° 07'19"
Dewey	N34°31'47"/W112° 14'32"
Intersection: Road Splits/Route 69 and Fain Road	N34°33'42"/W112°15'34"
Yavapai County Fairgrounds: 3R/3L In Use	N34°38'50"/W112° 16'39"
Crossroads Shopping Center: 21R/21L In Use	N34°34'33"/W112° 21'56"
Watson Lake	N34°35'20"/W112° 25'03"
Ernest A Love Field Airport (PRC)	N34°39'16"/W112° 25'11"



# GENERAL INFORMATION

## ERNEST A LOVE FIELD AIRPORT (PRC)



ATIS: 127.2    TOWER 3L/21R: 128.75; 3R/21L: 125.3    GROUND 3L/21R: 119.25; 3R/21L: 121.7    CTAF: 125.3

### EXPECTED SURFACE CLOSURES

- Runway 12/30
- Taxiways E, F (west of taxiway C)

### PARKING AREAS

- When operating in the parking areas, pilots are encouraged to be extra alert for taxiing aircraft, aircraft with engine(s) running, and vehicle/pedestrian traffic.
- Marshalls will be assisting aircraft to and from parking areas and run-up areas.
- For safety reasons, high RPM engine running is prohibited in designated parking areas. For departure, it is recommended that pilots conduct their run-up procedures in queue if practical.
- Please review the parking map prior to landing and departure.

### VEHICULAR TRAFFIC

- Vehicles are not allowed on ramps except those belonging to airport operators and tenants, and exhibitors participating in the AOPA Ernest A Love Field Airport Fly-In.

### PRE-FLIGHT PLANNING

- Please ensure that you have reviewed the special flight information, departure procedures, and temporary taxi procedures prior to engine start.
- High traffic density is expected Saturday morning and afternoon. Consider arriving during off-peak hours.



# DEPARTURE PROCEDURES

## ERNEST A LOVE FIELD AIRPORT (PRC)

### IFR DEPARTURES

Follow marshalls instructions to taxi to the nearest designated IFR departure holding area. IFR departures should obtain a clearance from Prescott Ground on **119.25** when ready for departure. **DO NOT CONTACT PRESCOTT GROUND ON 119.25 UNTIL YOU ARE READY TO DEPART.**

### VFR DEPARTURES

**VFR Flight Following:** Pilots wanting VFR flight-following should make the request to Phoenix Approach on the appropriate frequency when clear of Class D airspace.

Contact Phoenix Approach on **126.37** if departure heading is between the Drake VORTAC 340 degree radial and the 110 degree radial; clockwise.

Contact Phoenix Approach on **133.57** if departure heading is between the Drake VORTAC 111 degree radial and the 339 degree radial; clockwise.

*VFR Traffic Advisories/Flight Following will be provided on a workload-permitting basis.*

**Prior to Start-up:** Please ensure that you have reviewed the special flight information, departure procedures, and temporary taxi procedures prior to engine start. Check ATIS on **127.2**.

**Engine Start:** Locate a marshaller to monitor engine start.

**Run-up:** If practical, it is recommended that you conduct your run-up while in queue for departure. Please consider propeller blast during your run-up. For noise abatement, do not conduct run ups on TWY D1 prior to 8:00 AM local.

**Taxi:** Contact Prescott Ground on **121.7** or **119.25** when ready to taxi.

#### Departure:

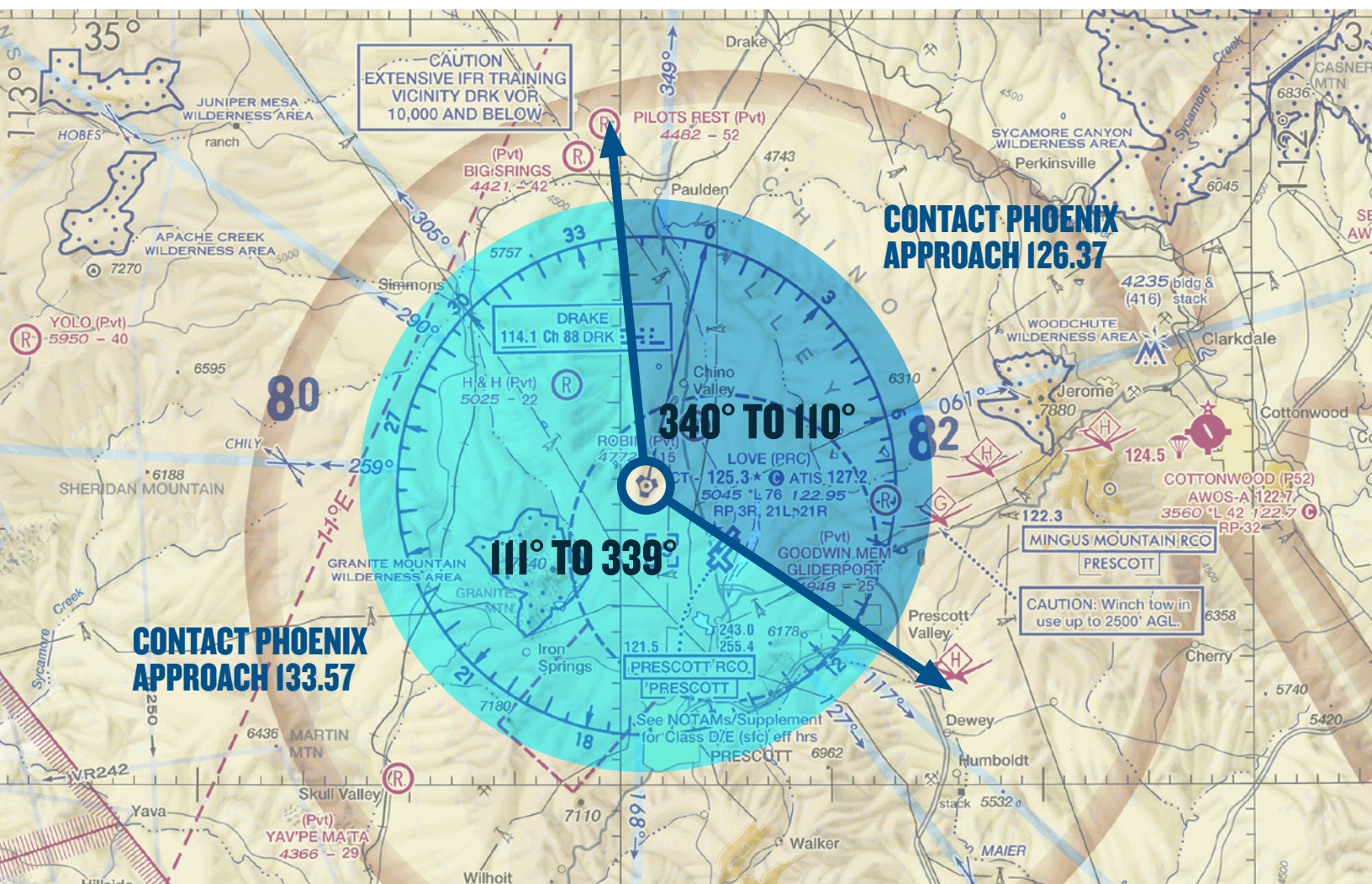
**If departing runway 3R or 21L, CONTACT Prescott Tower on 125.3** when number 1 for departure. Be prepared for immediate take-off.

**If departing runway 3L or 21R, CONTACT Prescott Tower on 128.75** when number 1 for departure. Be prepared for immediate take-off.

**\*Fly runway heading until advised otherwise by Prescott Tower or when leaving Class D airspace then turn on course at pilot's discretion.**



## VFR FLIGHT FOLLOWING FREQUENCIES



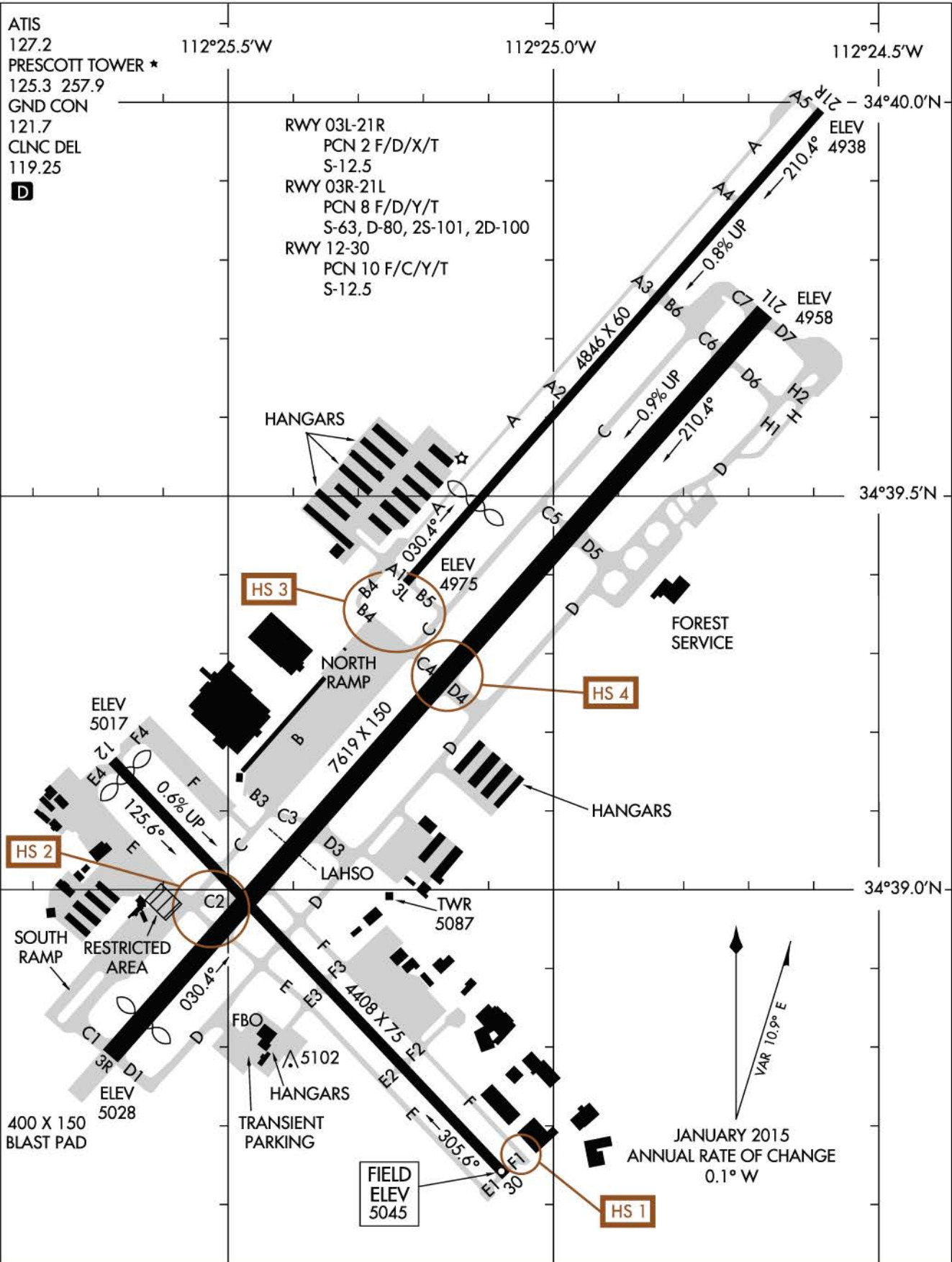
## ATIS: 127.2

**TOWER 3L/21R: 128.75; 3R/21L: 125.3**

**GROUND 3L/21R: 119.25; 3R/21L: 121.7**

CTAF: 125.3





**ATIS: 127.2    TOWER 3L/2IR: 128.75; 3R/2IL: 125.3    GROUND 3L/2IR: 119.25; 3R/2IL: 121.7    CTAF: 125.3**