



# The Hangout

AN AOPA FLY-IN

NOV 4-5

TAMPA

Tampa Executive Airport (KVDF) Tampa, FL

PRESENTING  
SPONSOR

**VDF**  
Tampa Executive Airport



Tampa  
International  
Airport

# **AOPA HANGOUT**

## **TAMPA EXECUTIVE AIRPORT (KVDF)**

### **TAMPA, FLORIDA**

**NOVEMBER 4 & 5, 2022**

## **SPECIAL AIR TRAFFIC PROCEDURES**

Special air traffic procedures to manage increased traffic, enhance safety, and minimize delays will be in effect each day from **7:00 AM EDT until 7:00 PM EDT (1100-2300 UTC)**.

### **TEMPORARY VFR PROCEDURES**

Specific procedures contained within this NOTAM may be revised at the time of the event. Pilots are urged to review all applicable NOTAMs and arrival/departure procedures prior to conducting a flight to Tampa Executive Airport. Users are encouraged to check NOTAMs frequently to verify they possess the most current revisions. This NOTAM does not supersede restrictions pertaining to the use of airspace contained in FDC NOTAMS.

### **EXECUTIVE ADVISORY SERVICE: 118.35**

Non-Federal personnel will provide Airport ADVISORY service on **118.35** to aircraft operating at Tampa Executive Airport during the procedures NOTAM effective times. If unable to contact Executive Advisory, announce intentions on the CTAF/UNICOM **122.7** and follow standard non-towered airport procedures.

**NOTE: Advisory service does NOT constitute Air Traffic Control (ATC) Service, or ATC clearance.**

### **AIRPORT CLOSURE**

7:00 PM EDT (2300 UTC) Friday, November 4, 2022 until 7:00 AM EDT (1100 UTC) Saturday, November 5, 2022

7:00 PM EDT (2300 UTC) Saturday, November 5, 2022 until 7:00 AM EDT (1100 UTC) Sunday, November 6, 2022

### **RUNWAY CLOSURE**

Runway **18/36** is expected to be closed during the event. Check NOTAMs for exact times.

### **PREFLIGHT PLANNING**

Pilots are urged to review all applicable NOTAMs and arrival/departure procedures prior to conducting flight to Tampa Executive Airport. IFR flight plans should be filed at least 2 hours prior to proposed departure time.

### **IFR DELAYS**

There is no Special Traffic Management Program for this event. No arrival or departure reservations are required. IFR separation requirements may cause delays when arrival rates exceed airport capacity. Pilots on an IFR flight plan should be prepared for potential holding. IFR flight plans to Tampa Executive Airport should be filed at least 2 hours prior to proposed departure time. VFR flight on

designated arrival routes is highly recommended if practical. IFR arrivals are encouraged to cancel with Tampa Approach as soon as practicable before changing to advisory frequency.

### LOCAL TRAINING AND PRACTICE APPROACHES

Local traffic pattern, closed traffic training, and practice instrument approaches **will not be available** at Tampa Executive Airport during the times when the special air traffic procedures are in effect.

### NO RADIO AIRCRAFT

Due to high density traffic, aircraft operations without a radio are not recommended.

### ENROUTE VFR TRAFFIC ADVISORY SERVICES

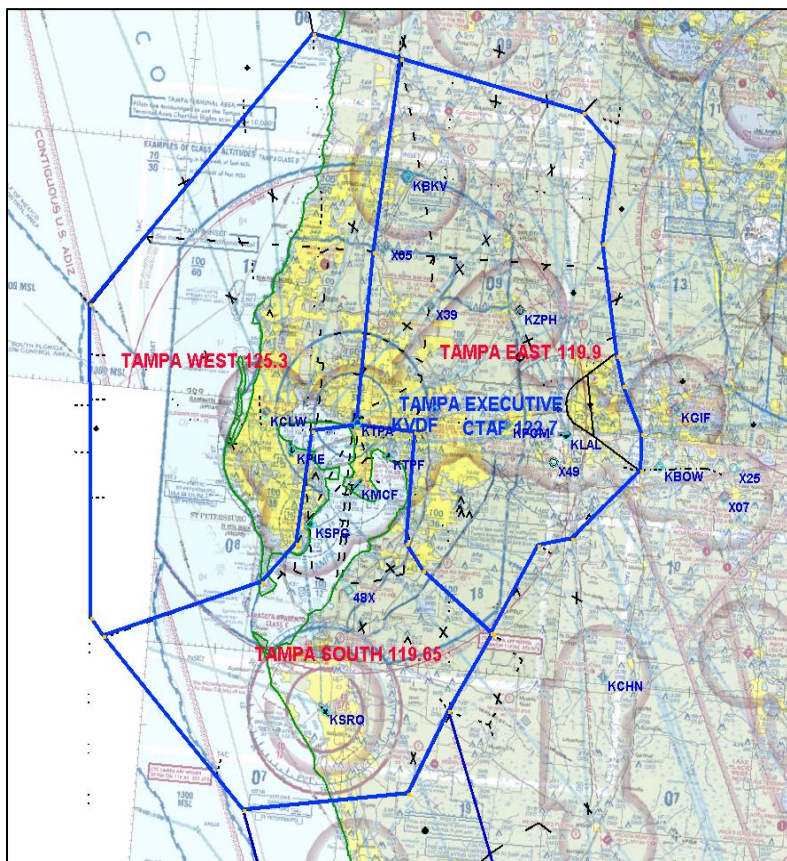
TAMPA APPROACH (EAST)	119.9
TAMPA APPROACH (SOUTH)	119.65
TAMPA APPROACH (WEST)	125.3

*\*Note: See Tampa frequency diagram below*

### TAMPA EXECUTIVE AIRPORT FREQUENCIES

AWOS-3	121.125T (813) 630-0924
EXECUTIVE ADVISORY	118.35
CTAF/UNICOM	122.7
TAMPA APPROACH/DEPARTURE	119.9
DADES STAR—TAMPA	135.5
MAATY STAR—TAMPA	118.8

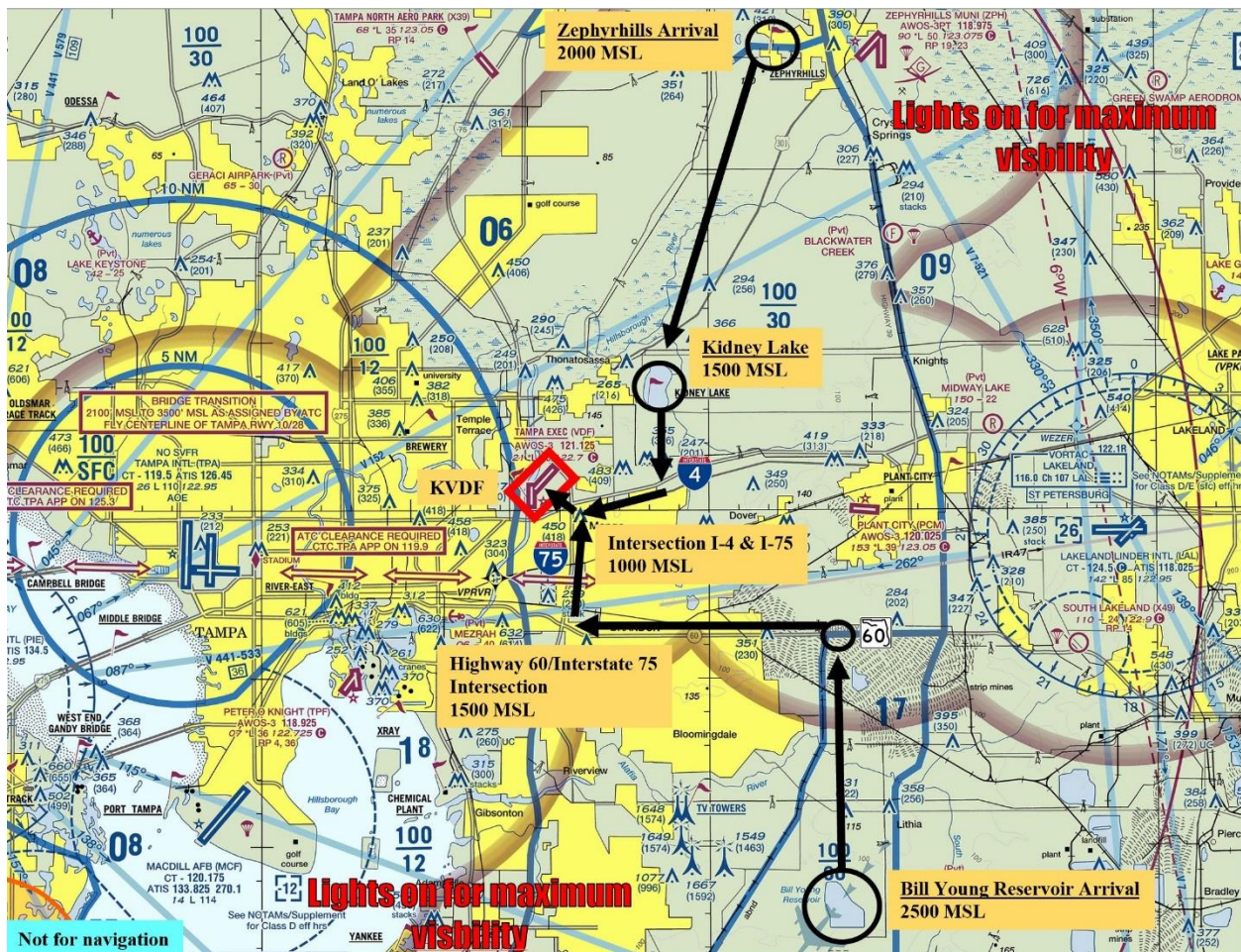
### TPA APPROACH FREQUENCY MAP





# VFR ARRIVAL ROUTES

## VFR ARRIVALS OVERVIEW



## BILL YOUNG RESERVOIR VFR ARRIVAL PROCEDURE

Check Tampa Executive AWOS on 121.125 as soon as practical.

This procedure begins over Bill Young Reservoir at 2500 feet MSL. From the reservoir, proceed directly north to highway 60; approximately 7.5 nautical miles. Pilots MUST remain clear of the Tampa Class B Airspace at all times unless receiving a clearance to transition the airspace directly from Tampa Approach.

**Caution:** Stay alert for east/west traffic enroute to/from Tampa International Airport. Tampa Class B Airspace 6000-10000 MSL.

Upon reaching highway 60, turn west and follow the highway until it intersects with Interstate 75. Begin descent to 1000 feet MSL at pilot's discretion.

**Caution:** Tampa Class B Airspace 3000-10000 MSL.

Upon reaching the intersection of highway 60 and Interstate 75, turn north and follow Interstate 75 until intersects with Interstate 4; approximately 3.5 nautical miles. Stay east of Interstate 75.



## INTERSECTION HIGHWAY 60 AND INTERSTATE 75



Contact **Executive Advisory** on **118.35** when turning north at the intersection of highway 60 and Interstate 75. *Example: "Executive Advisory, Skyhawk 1234, Interstate 75, inbound"*.

**Caution: Stay alert for converging traffic from the east along Interstate 4. Tampa Class B Airspace west of Interstate 75 is 1200-10000 MSL.**

Upon reaching the intersection of Interstate 75 and Interstate 4, expect to enter midfield downwind for either runway 5 or runway 23. Tampa Executive Airport is approximately 1.5 nautical miles northwest of the intersection.



## INTERSECTION INTERSTATE 75 AND INTERSTATE 4



If traffic volume requires holding, expect to overfly the airport and then turn northeast to Kidney Lake. Follow the Zephyrhills Arrival Procedure from Kidney Lake to return to Tampa Executive Airport.

**Caution: Stay alert for traffic arriving at Kidney Lake at 1500 feet MSL.**

### Tampa Executive Airport TPA: 1000 feet MSL

Follow instructions from **Executive Advisory** on **118.35**. After landing, do not stop on the runway unless necessary. Exit the runway as quickly and as safely as possible at the first available taxiway. Continue far enough forward so as not to block subsequent arrivals. Follow instructions from **Executive Advisory** on **118.35**. Marshallsers will direct aircraft to the parking areas.

### ZEPHYRHILLS VFR ARRIVAL PROCEDURE

**Check Tampa Executive AWOS on 121.125 as soon as practical.**

This procedure begins over the town of Zephyrhills at **2000** feet MSL; 4.5 NM west of the Zephyrhills Airport (ZPH). From Zephyrhills, proceed southwest to Kidney Lake. Pilots **MUST** remain clear of the Tampa Class B Airspace at all times unless receiving a clearance to transition the airspace directly from Tampa Approach.

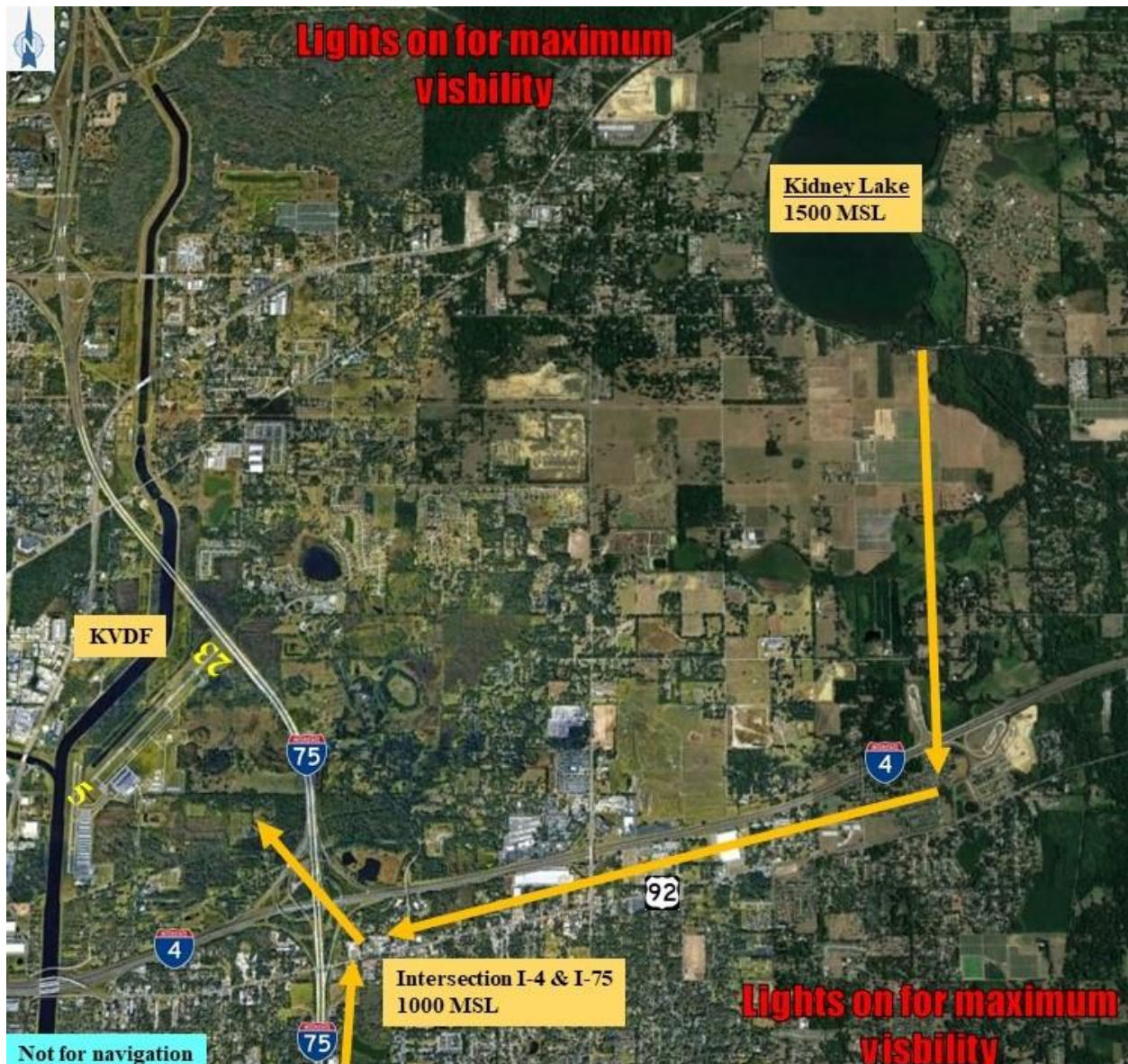
**Caution: Stay alert for glider and skydiving activity near the Zephyrhills Airport.**

Contact **Executive Advisory** on **118.35** when at Kidney Lake. *Example: "Executive Advisory, Skyhawk 1234, Kidney Lake inbound"*. From Kidney Lake, proceed directly south to Interstate 4. Begin descent to **1000** feet MSL at pilot's discretion. Upon reaching Interstate 4, turn west and follow Interstate 4 to where it intersects with Interstate 75.

**Caution: Stay alert for converging traffic from the south just east of Interstate 75. Tampa Class B Airspace west of Interstate 75 is 1200-10000 MSL.**



## KIDNEY LAKE TO INTERSTATE 4



Upon reaching the intersection of Interstate 75 and Interstate 4, expect to enter midfield downwind for either runway 5 or runway 23. Tampa Executive Airport is approximately 1.5 nautical miles northwest of the intersection.



## INTERSECTION INTERSTATE 75 AND INTERSTATE 4



If traffic volume requires holding, expect to overfly the airport and then turn northeast to Kidney Lake. Follow the Zephyrhills Arrival Procedure from Kidney Lake to return to Tampa Executive Airport.

**Caution: Stay alert for traffic arriving at Kidney Lake at 1500 feet MSL.**

### **Tampa Executive Airport TPA: 1000 feet MSL**

Follow instructions from **Executive Advisory on 118.35**. Depending on wind conditions, expect to fly a left downwind for runway 23 or a right downwind for runway 5. After landing, do not stop on the runway unless necessary. Exit the runway as quickly and as safely as possible at the first available taxiway. Continue far enough forward so as not to block subsequent arrivals. Follow instructions from **Executive Advisory on 118.35**. Marshalls will direct aircraft to the parking areas.



# TAMPA EXECUTIVE AIRPORT GENERAL INFORMATION

## AIRCRAFT PARKING AND SHOW LAYOUT



1. **Parking Areas** -- When operating in the parking areas, pilots are encouraged to be extra alert for taxiing aircraft, aircraft with engine(s) running, and vehicle/pedestrian traffic. Marshalls will be assisting aircraft to and from parking areas and run-up areas. For safety reasons, high RPM engine running is prohibited in designated parking areas. For departure, it is recommended that pilots conduct their run-up procedures in queue if practical. Please review the parking map below prior to landing and departing.
2. **Vehicular Traffic** -- Vehicles are not allowed on ramps except those belonging to airport operators and tenants.
3. **Aircraft Service** -- Fuel/oil orders will be taken by Skyport Aviation at the time your aircraft is parked. If you need either, please make sure to make the request at that time. Orders made later might delay your departure. Credit card information will be requested at the time the order is placed. Receipts if requested will be emailed or available in the FBO. Order slip will be attached to propeller. If you are uncomfortable providing credit card information on the ramp, you can provide the information directly to Skyport Aviation's front desk. *Self-serve fueling will not be available during the AOPA event.*

4. **Securing Aircraft** -- Chocks and/or tie downs are required and not provided. Please bring your own.
5. **Camping** -- Camping is allowed and encouraged. Pitch a tent under the wing of your aircraft and enjoy the weekend under the stars. See the [AOPA website](#) for more information. If you are camping at your aircraft, please print a large C and place it in your windshield so that marshallsers can see it upon your arrival.

## **TAMPA EXECUTIVE AIRPORT DEPARTURE PROCEDURES**

### **IFR DEPARTURES**

Follow marshallsers instructions to taxi to the nearest designated IFR departure holding area. IFR departures should obtain a clearance from Tampa Clearance Delivery by calling 813-878-2528.

**Do not contact Tampa Clearance Delivery until you are prepared to depart.**

### **VFR DEPARTURES**

1. **VFR Flight Following** – Pilots wanting VFR flight-following should make the request to Tampa Approach on **119.9** when clear of Tampa International Airport Class B airspace. *VFR Traffic Advisories/Flight Following will be provided on a workload-permitting basis only.*
2. **Prior to start-up** -- Please ensure that you have reviewed the special flight information, departure procedures, and temporary taxi procedures prior to engine start. Check AWOS on **121.125**.
3. **Engine Start/Run-up** – If practical, it is recommended that you conduct your run-up while in queue for departure. Please consider propeller blast during your run-up.
4. **Taxi** – Follow instructions from marshallsers and **MONITOR Executive Advisory on 118.35**. Be prepared for immediate departure when number one for take-off.
5. **Departure** – After takeoff, turn to a heading of 090° as soon as practical and remain clear of Class B airspace. Turn on course when clear of the Class B shelf.



# TAMPA EXECUTIVE AIRPORT DIAGRAM

