

SPECIAL AIR TRAFFIC PROCEDURES

Akron-Fulton International Airport (KAKR) August 15th-17th, 2025

This is preliminary draft information, subject to changes. Please check back for current information closer to the event

Special air traffic procedures will be in effect daily to manage increased traffic, enhance safety, and minimize delays during the event. **Night Operations are NOT authorized, and the airport will be NOTAM'd closed from sunset to sunrise (except PPR and emergency operations). "Prior Permission Required" (PPR) will be in effect for any required operations from sunset to sunrise (please contact airport management for PPR at 330-733-4760 or TONYP@SUMMITAIRPORTSERVICES.COM).**

Contents

TEMPORARY VFR PROCEDURES.....	2
AIRPORT CLOSURE.....	2
PREFLIGHT PLANNING.....	2
AKRON AIRPORT FREQUENCIES.....	2
LOCAL TRAINING AND PRACTICE APPROACHES.....	3
VFR ARRIVALS OVERVIEW.....	3
WADSWORTH MUNICIPAL (3G3).....	4
AKRON AIRSPACE OVERVIEW.....	5
VFR ARRIVALS FROM THE WEST.....	6
VFR ARRIVALS FROM THE SOUTH.....	7
VFR ARRIVALS FROM THE EAST.....	8
VFR ARRIVALS FROM THE NORTH.....	9
AFTER LANDING.....	10
FLY-IN GENERAL INFORMATION.....	10
PARKING AREAS.....	10
VEHICULAR TRAFFIC.....	10
PARKING AND SERVICE DETAILS.....	10
ON-AIRPORT MAINTENANCE.....	11
CHOCKS AND TIE DOWNS.....	11
CAMPING.....	11
AKRON FULTON AIRPORT DEPARTURE PROCEDURES.....	12
IFR DEPARTURES.....	12
VFR DEPARTURES.....	12
DEPARTING WHEN ADVISORY TOWER IS UNAVAILABLE.....	12
AKRON FULTON AIRPORT INFORMATION.....	13

TEMPORARY VFR PROCEDURES

Specific procedures contained within this NOTICE may be revised at the time of the event. Pilots are urged to review all applicable NOTAMs and arrival/departure procedures before conducting a flight to Akron. Pilots are encouraged to check NOTAMs frequently to verify they possess the most current revisions. This information does not supersede restrictions on the use of airspace as outlined in FDC NOTAMS.

*****Advisory Tower on 120.40 will be in Operation Fri, Sat, and Sun 7:00 AM – 7:00 PM*****

AIRPORT CLOSURE

****** The airport will be closed daily from Sunset to Sunrise to normal operations. ******

******The airport will also be closed during scheduled AIRSHOW times******

**A TFR WILL BE IN EFFECT DURING PUBLISHED AIRSHOW TIMES – CHECK NOTAM
PPR (prior permission req'd) for Operations AFTER SUNSET – CONTACT AIRPORT
MANAGEMENT @ 330-733-4760 or TONYP@SUMMITAIRPORTSERVICES.COM**

Tentative Airshow Times – Subject to Change - Please plan ahead!

Friday 4 pm-6 pm / Saturday 11:30 am – 4 pm / Sunday 11:30 am – 4 pm

PREFLIGHT PLANNING

Pilots are asked to review all applicable NOTAMs and arrival/departure procedures before conducting a flight to Akron. IFR flight plans should be filed at least 6 hours before the proposed departure time.

AKRON AIRPORT FREQUENCIES

*****THE ADVISORY TOWER WILL BE IN USE 7 AM – 7 PM FRI / SAT / SUN*****

Arrivals & Departures on FRI/SAT/SUN Should Use the ADVISORY TOWER

Advisory Tower	120.40
CTAF/UNICOM	123.075
WX AWOS	126.825 / 330-724-4237

LOCAL TRAINING AND PRACTICE APPROACHES

The local traffic pattern will be closed to flight training, and touch-and-goes will not be available during the times when the special air traffic procedures are in effect. IFR practice approaches will not be available during this time. Local flight schools are being asked to adjust their training OPERATIONS on these dates to not saturate practice areas that may be in the fly-in arrival corridors.

VFR ARRIVALS OVERVIEW

The AKR airport is 7.5 nm North of the Akron-Canton (CAK) airport. CAK is a Class C airport with commercial service. AKR is under the outer ring of the C airspace, with a floor of 2,500 MSL. AKR is also in the Mode C veil of Cleveland's Class B airspace. Use caution maneuvering to the VFR arrival points, and please follow all requirements found in [14 CFR 91.225](#). AKR is visible with the "airdock" on the airport's south side (see photo page 13).

Pilots are asked to fly to specific reporting points based on the direction from which they are arriving (N,E,W,S) and adhere to the recommended altitudes. From each reporting point, fly to the downtown area of Akron, using the baseball stadium (**AKRON reporting point**) as reference, approx. 3 miles NW of the AKR airport. **Pilots will then be given pattern entry instructions from the advisory tower.** Pilots should announce arrival at the 1st reporting point and over downtown Akron. Please use correct phraseology and be brief, as we expect high volumes of incoming traffic. Turn on anti-collision lights and landing lights before your initial reporting point. Pilots should be aware of towers west of Akron, the tallest at a height of 2,048 MSL. The towers are lit and painted red and white. Check NOTAMS.

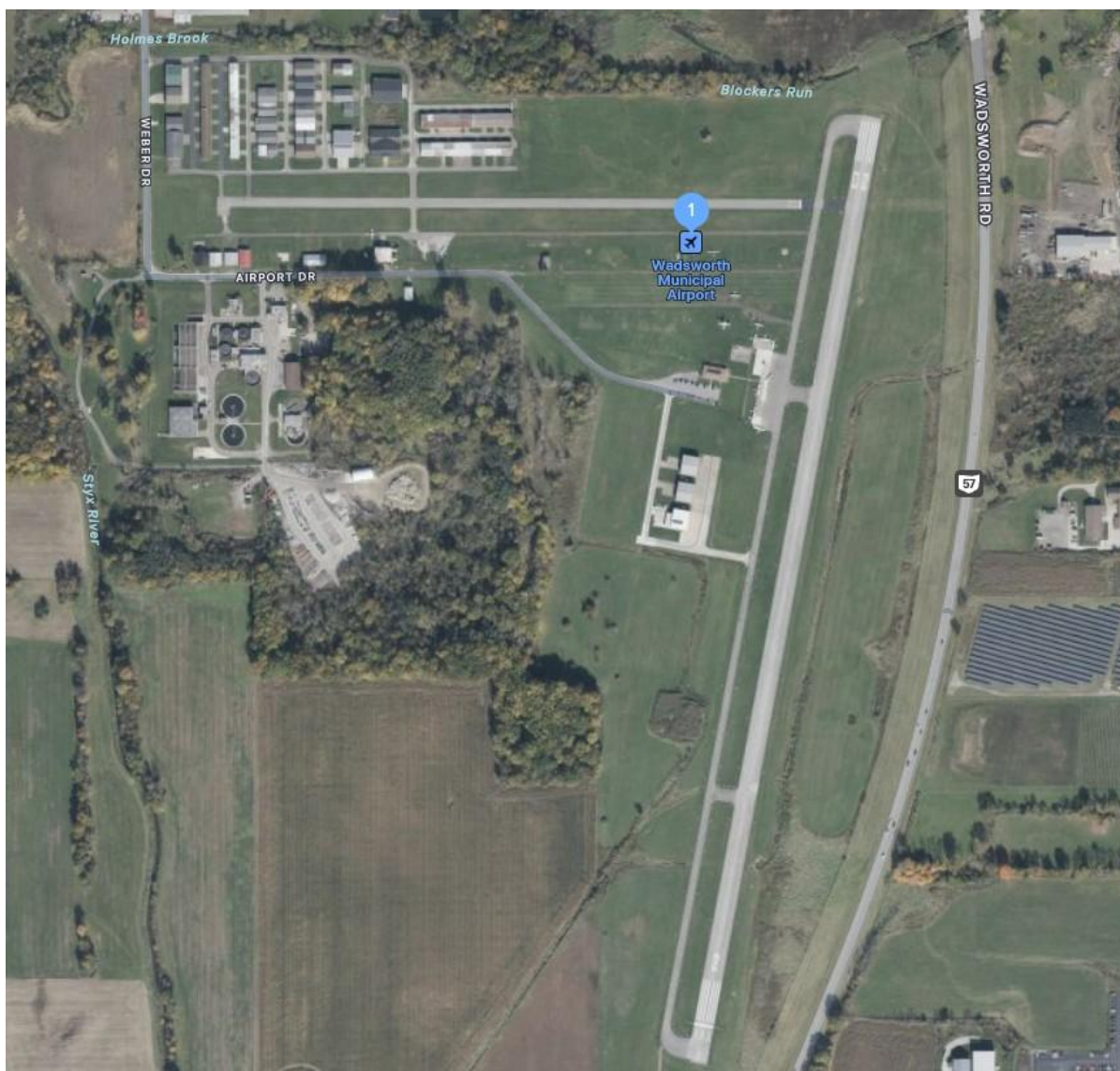
Please use caution when converging on the arrival waypoints. Aircraft should remain in a straight line in trail at half-mile intervals. If able, maintain 90 knots and an altitude below 2,500' MSL. Find an aircraft and follow it to the reporting point. Also, be aware of medevac helicopter traffic in the Akron area. AOPA has coordinated with CLE Approach to allow arrivals at 2,500 MSL, but do not exceed 2,500 MSL while transitioning the AKRON STADIUM

*****When contacting the advisory tower, use tail number and aircraft type/color.*****

DO NOT ENTER THE AKRON TRAFFIC PATTERN UNLESS CONTACT HAS BEEN ESTABLISHED WITH THE ADVISORY TOWER on 120.40

WADSWORTH MUNICIPAL (3G3)

If AKR needs to close during event hours, a NOTAM will be put in effect, and the advisory tower will direct aircraft to the diversion airport of Wadsworth Municipal 3G3. 3G3 is 12.5 nm West of AKR. Parking may be limited at 3G3, but airport management has made turf areas available. Akron Canton CAK Regional may also be used as a diversion airport, but please be aware that a Class C established communication is required, and FBO fees may apply.



AKRON AIRSPACE OVERVIEW

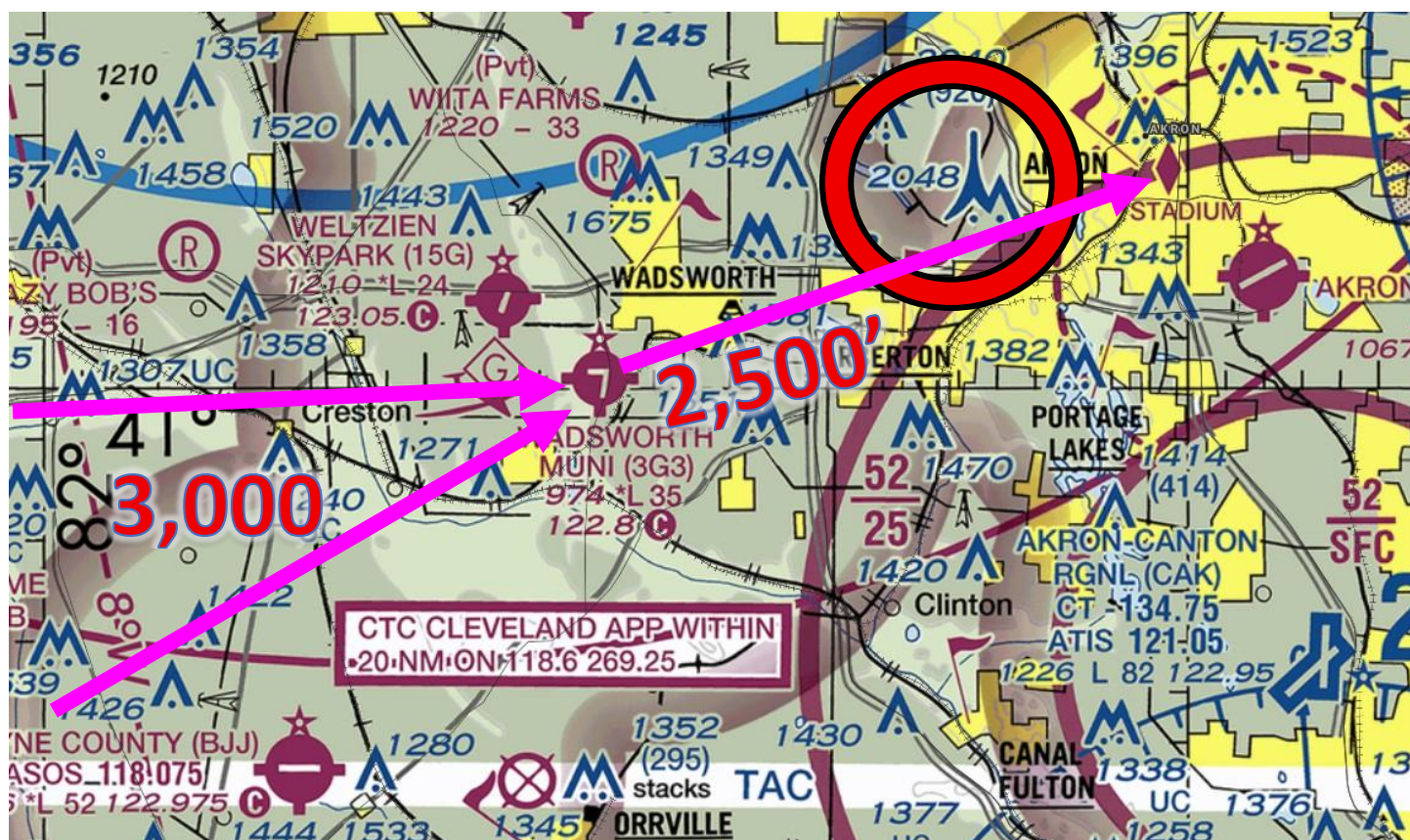
Akron Fulton Intl (KAKR) Circled in Green



VFR ARRIVALS FROM THE WEST

Pilots should maneuver to the reporting point “WADSWORTH” (3G3), which is 12.5 nm W of AKR, and then fly to AKRON, use the city as a check-in waypoint PRIOR TO pattern entry. **Remain at/above 3,000’ MSL to avoid 3G3 traffic pattern, and 2,500’ MSL while enroute to AKRON STADIUM.** Descend to 2,000 when arriving at the AKRON STADIUM reporting point. **Contact the advisory tower on 120.40 when arriving at WADSWORTH and AKRON STADIUM.** Use 3G3 as a reference for a GPS waypoint. If you are utilizing VFR Flight Following, terminate at this time. You may be asked to keep the squawk code to the ground. **Be aware of converging traffic near Wadsworth!**

USE CAUTION MANEUVERING TO AKRON FROM WADSWORTH. TOWER 2,048 MSL WEST OF AKRON. TOWER IS LIT, PAINTED RED AND WHITE.



****The advisory tower will provide pattern entry instructions when arriving over AKRON****

VFR ARRIVALS FROM THE SOUTH

Pilots should maneuver to the reporting point “WADSWORTH” (3G3), which is 12.5 nm W of AKR, and then fly to AKRON, use the city as a check-in waypoint PRIOR TO pattern entry. **Remain at/above 3,000’ MSL to avoid 3G3 traffic pattern, and 2,500’ MSL while enroute to AKRON STADIUM.** Descend to 2,000 when arriving at the AKRON STADIUM reporting point. **Contact the advisory tower on 120.40 when arriving at WADSWORTH and STADIUM.** Use 3G3 as a reference for a GPS waypoint. If you are utilizing VFR Flight Following, terminate at this time. You may be asked to keep the squawk code to the ground. **Be aware of converging traffic near Wadsworth!**

USE CAUTION MANEUVERING TO AKRON FROM WADSWORTH. TOWER 2,048 MSL WEST OF AKRON. TOWER IS LIT, PAINTED RED AND WHITE.

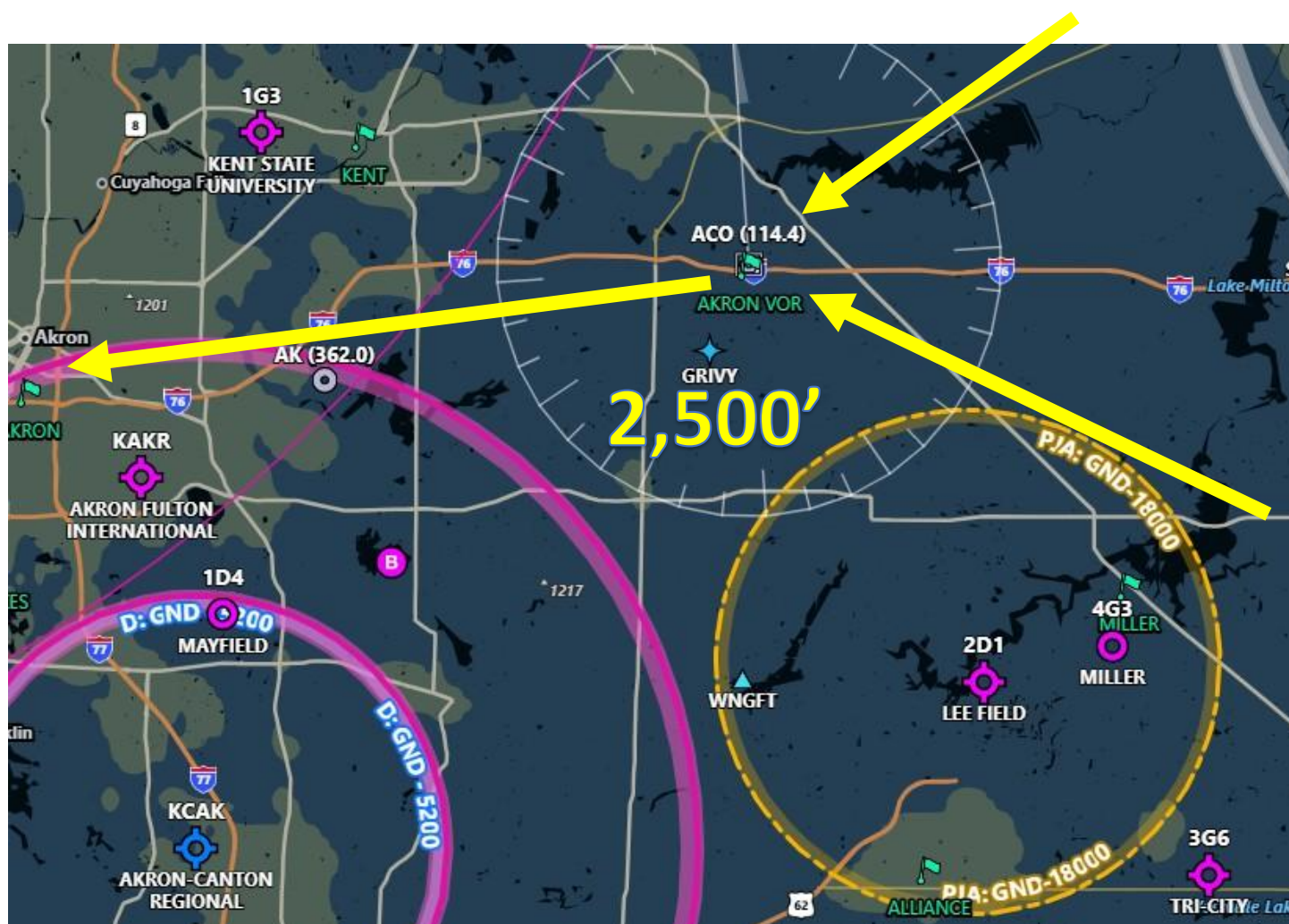


****The advisory tower will provide pattern entry instructions when arriving over AKRON****

VFR ARRIVALS FROM THE EAST

Pilots should maneuver to the Akron VOR (ACO) which is 12.8 nm east-northeast of the AKR airport. **Report arriving at the ACO VOR to the advisory tower on 120.40.** From the ACO VOR, fly to **AKRON STADIUM**, using the stadium as a reporting point PRIOR TO pattern entry. From the VOR, pilots should fly no higher than 2,500' MSL and proceed direct to AKRON reporting point. If utilizing VFR Flight Following, terminate at this time. You may be asked to keep the squawk code to the ground. **Pilots should also use caution and avoid the vicinity of Lee Field, 2D1, due to possible skydiving operations. Please monitor 122.9 for these operations. Be aware of converging traffic near ACO!**

****The advisory tower will provide pattern entry instructions when arriving at AKRON****



VFR ARRIVALS FROM THE NORTH

Pilots should maneuver to the Akron VOR (ACO) which is 12.8 nm east-northeast of the AKR airport. **Report arriving at the ACO VOR to the advisory tower on 120.40.** From the ACO VOR, fly to the reporting point of **AKRON STADIUM**, which is downtown Akron. From the VOR, pilots should fly no higher than 2,500' MSL and proceed direct to the AKRON reporting point PRIOR TO pattern entry. If utilizing VFR Flight Following, terminate at this time. You may be asked to keep the squawk code to the ground. **Be aware of converging traffic near ACO!**

****The advisory tower will provide pattern entry instructions when arriving at AKRON****



AFTER LANDING

After landing, do not stop on the runway unless necessary. Exit the runway as quickly and as safely as possible at the first available turnoff, **following marshaller commands**. Continue far enough forward so as not to block subsequent arrivals. General aircraft parking will be on the South side of the field, on turf. Marshalls will guide you to parking. **Shuttles will be available to take pilots and attendees to the show main entrance.**

Marshalls will guide aircraft to a parking space once you have arrived in the non-movement/aircraft parking areas (outlined in yellow page 11). If you are camping (North parking area), have parking signage visible in the windscreen for marshalls (C for Camping / P for Parking). Camping areas are on the North side of the airport. The advisory tower may also ask for parking requests. *You may print the C or P from this packet; see the information below.*

*****Pilots should advise the tower if they are CAMPING*****

*****Marshalls on the taxiway will direct you to CAMPING*****

FLY-IN GENERAL INFORMATION

PARKING AREAS

When operating in the parking areas, pilots are encouraged to be extra alert for taxiing aircraft, aircraft with engine(s) running, and vehicle/pedestrian traffic. Marshalls will be assisting aircraft to and from parking areas and run-up areas. For safety reasons, high RPM engine running is prohibited in designated parking areas. For departure, it is recommended that pilots conduct their run-up procedures in the queue if practical.

The attendee aircraft parking and camping areas at AKR will be on turf or closed runways/taxiways. Some turf areas may have asphalt below the turf. Please use caution when taxiing and NO Runups until on a paved taxi lane. There is NO parking available on the main ramp, and there is limited parking for heavy and low-profile aircraft on designated hard surface areas. This area is first-come first first-served, and NO reservations are accepted. BRING TIE-DOWN EQUIPMENT.

VEHICULAR TRAFFIC

Vehicles are not allowed on ramps except those belonging to airport operators and tenants.

PARKING AND SERVICE DETAILS

Fuel/oil order form slips will be made available at the time your aircraft is parked. If you need either, please make sure to request it at that time. Orders made later might delay your departure. Credit card information will be requested at the time the order is placed. Order slips will be attached to the propeller. If you are uncomfortable providing credit card information on the ramp, you can provide the information directly to the line service personnel.

AOPA FLY-IN AT THE PROPS AND PISTON FESTIVAL / 2025 PILOT INFORMATION

ON-AIRPORT MAINTENANCE

Summit Aviation will be available during the event for any maintenance issues that you may need. They are located at the airport and have mobile-ready services (battery, strut servicing, etc.). If an issue arises, please call Summit Aviation at 330-733-4760.

CHOCKS AND TIE DOWNS

Chocks and/or tie-downs are required and **not** provided. **Please bring your own.**

CAMPING

Camping is allowed and encouraged. Pitch a tent under the wing of your aircraft and enjoy the weekend under the stars. See the [AOPA website](#) for more information. If you are camping at your aircraft, please print the large C provided in the camping material and place it in your windshield so that marshallers can see it upon your arrival. **Please view the airshows from the official event viewing area, as we need to maintain the airshow-waivered aerobatic box per FAA requirements.**

*****Pilots should advise the tower if they are CAMPING*****



AKRON FULTON AIRPORT DEPARTURE PROCEDURES

IFR DEPARTURES

Aircraft intending to depart IFR should consider requesting either a VFR climb or depart VFR and pick up an IFR clearance enroute if practical to avoid departure delays. Cleveland Clearance Delivery 121.6 or 216-352-2323.

VFR DEPARTURES

Prior to start-up

Please ensure that you have reviewed the special flight information, departure procedures, and temporary taxi procedures before engine start. Check AWOS on **126.825**.

Engine Start/Run-up

If practical, it is recommended that you conduct your run-up while in queue for departure. Please consider propeller blast during your run-up.

Taxi

Follow instructions from marshallers and **MONITOR ADVISORY TOWER on 120.40** and contact **ADVISORY TOWER** when ready for departure. Marshallers will guide you to the departure runway.

Departure

Pilots are likely to get instructions to fly runway heading and proceed on course after climbing to 1000 feet. Remain below 2,000 MSL until clear of the CAK Class C Airspace.

DEPARTING WHEN ADVISORY TOWER IS UNAVAILABLE

Pilots should broadcast their location and intentions before any movement on the CTAF **123.075**. **Remember, the airport is closed from Sunset to Sunrise except for PPR. PPR should be obtained thru airport management at 330-733-4760 or TONYP@SUMMITAIRPORTSERVICES.COM**

*****Stay alert while taxiing for aircraft parked on taxiways or other non-standard operations*****

AKRON FULTON AIRPORT INFORMATION

Traffic Pattern Altitude	2,067'
Direction of traffic	Left
Runway	07/25 6,336' x 150' Good Condition
Lighting	MIRL
Fuel	100LL Low-Lead, Jet A1
Weather	ASOS 126.825 / 330-724-4237
Clearance Delivery	Cleveland CD 121.6 / 216-352-2323
Fuel	Follow procedures outlined in this packet

ADVISORY TOWER **120.40 - 7 AM to 7 PM Friday, Saturday, and Sunday of the event.**





P

C