



## **Special Aircraft Arrival and Departure Procedures in Effect Noon Wednesday, Nov 5<sup>th</sup> through Noon Sunday, Nov 9<sup>th</sup>**

### **AREA OVERVIEW**

AOPA is proud to present the 2008 Expo in San Jose California. As the 10<sup>th</sup> largest city in the country, San Jose offers visitors the sophisticated entertainment they'd expect from a major metropolitan area. San Jose is laid out with top museums, restaurants, performing arts, nightlife, and sports all within walking distance of the convention center and downtown hotels. The mass transit system also gives you easy access to neighboring communities worth exploring in this great region, including the coast just 30 miles away.

While attending Expo don't forget to visit the aircraft display which will be located at the Norman Y. Mineta San Jose International Airport. The display will be open on Thursday and Friday from 9 a.m. to 5 p.m. and on Saturday from 9 a.m. to 4 p.m. Free shuttle bus service to the aircraft display will be provided between the convention center and the aircraft display area at the Norman Y. Mineta San Jose International Airport (SJC) on Thursday and Friday from 8:30 a.m. to 5:30 p.m. and on Saturday from 8:30 a.m. to 4:30 p.m. The aircraft display is free of charge and open to the general public as well as AOPA members.

Free shuttle bus transportation will also be provided for GA aircraft flying into Expo at Norman Y. Mineta San Jose International (SJC) and Reid-Hillview of Santa Clara County (RHV). The shuttle will run between the GA aircraft parking areas at both airports and the convention center on Wednesday 12 noon to 7 p.m., Thursday and Friday 7 a.m. to 7 p.m., and Saturday 7 a.m. to 6 p.m. **You will be responsible for your own transportation if arriving outside of the shuttle bus hours of operation.**

Five VFR arrival routes have been established to accommodate the anticipated number of aircraft flying in to the event. Two arrival routes and an alternate lead to Norman Y. Mineta San Jose International (SJC), and two arrival routes lead to Reid-Hillview of Santa Clara County (RHV). **Both airports are considered primary airports for the event.** Pilots are reminded to remain extremely vigilant in scanning for other traffic due to the increased number of operations expected for the event.

Upon contacting the tower at either SJC or RHV, be sure to identify yourself as “for AOPA” to assure that you are directed correctly.

**All aircraft must be able to maintain two-way radio communication to land at either Norman Y. Mineta San Jose International (SJC) or Reid-Hillview of Santa Clara County (RHV). “NO RADIO” aircraft must use other area airports.**

In the event that parking becomes full at Reid-Hillview of Santa Clara County (RHV), a notice will be broadcast on the RHV ATIS alerting pilots to the condition. At that point, aircraft intending to land at Reid-Hillview of Santa Clara County (RHV) shall fly the special arrival procedures as published for Norman Y. Mineta San Jose International (SJC) for full Expo services. In the event that parking capacity is reached at both airports, ATIS will advise the need to divert to other area airports.

In addition to SJC and RHV, there are many fine airports in the San Jose area. **If you are planning to use an airport other than Norman Y. Mineta San Jose International (SJC) or Reid-Hillview of Santa Clara County (RHV), be advised that AOPA-managed infrastructure and services, including ground transportation, are not provided. Pilots are also advised to call the airport in advance as transient parking may be extremely limited.**

**GA public-use airports within 35nm of San Jose:**

Palo Alto (PAO), South County (E16), Hollister (CVH), Watsonville (WVI), Salinas (SNS), Byron (C83), Livermore (LVK), Tracy (TCY), San Carlos (SQL), Marina (OAR) Airport and FBO contact information for these airports can be found in [AOPA’s Airport Directory](#).

**Securing aircraft**-Due to the number of aircraft expected for Expo, special parking areas have been designated at both SJC and RHV. Parking at SJC is all hard surface parking. Aircraft will be chocked. Parking at RHV is a mix of hard surface and grass. **Pilots are requested to bring chocks and tiedown gear.**

**Host FBO**

[Atlantic Aviation San Jose](#) will be providing support at Norman Y. Mineta San Jose International (SJC) for attendee arrivals and the aircraft display. No special arrangements are needed with Atlantic Aviation San Jose for your arrival at the AOPA Expo. Pilots need only follow the arrival procedures in this document and follow ground instructions and marshallers to parking. Atlantic Aviation is the only provider of GA services at SJC.

**SJC Parking Fees**-Norman Y. Mineta San Jose International has prepared special parking areas, streamlined procedures, and modified the facility to assure you have an enjoyable airport experience. Atlantic Aviation San Jose has increased staff, greatly enhanced their on-field crew and passenger transportation, and added resources to provide you with optimum service.

Singles/day trip	\$30
Singles/per night	\$40
Singles/entire show	\$55

***The lesser charge will apply.***

Twins non cabin class/day trip \$55  
Twins non cabin class/per night \$65  
Twins non cabin class/entire show \$75

*The lesser charge will apply.*

All others/day trip/night/entire show FBO Rate

**RHV Parking Fees-**Reid-Hillview of Santa Clara County has prepared special parking areas, closed runway 31L/13R, and modified the facility to assure you have an enjoyable airport experience. The airport has increased staff, enhanced their passenger transportation, and added resources to provide you with optimum service.

[Reid-Hillview of Santa Clara County](#)

**NOTE: NO JET FUEL AVAILABLE AT RHV**

**Aircraft under 5,200 lbs gross max takeoff weight**

Day trip \$15  
One night stay \$25  
Entire show \$45

**Aircraft 5,200 lbs GMTW and above and all helicopters**

Day trip \$25  
One night stay \$45  
Entire show \$85

# NORMAN Y. MINETA SAN JOSE INTERNATIONAL (SJC) SPECIAL ARRIVAL PROCEDURES

**Procedures in effect  
Wednesday through Sunday unless otherwise instructed by ATC**

SJC ATC Tower operates from 6:00 a.m. to midnight local time daily.

<b>SJC FREQUENCIES</b>	
APPROACH CONTROL	123.85, 133.0, 124.52
TOWER	124.0
GROUND CONTROL	121.7
CLEARANCE DELIVERY	118.0
ATIS	126.95

## **IFR ARRIVALS**

Although reservations are not required, the FAA will be utilizing traffic flow management for IFR aircraft during the event.

Due to heavy arrival traffic for the event and regular commercial traffic, **IFR ARRIVALS AND DEPARTURES WILL BE SEVERLY LIMITED.** You can expect **SIGNIFICANT DELAYS** at your departure point or enroute to SJC. VFR flight on the designated arrival routes is highly recommended if weather permits.

## **SECURING AIRCRAFT**

After shutting down, stay with your aircraft. A van will transport you to the FBO's registration area. Additionally, **pilots are asked to bring their own chocks.**

## **SJC TRANSPORTATION**

Free shuttle bus transportation will be available to and from the convention center from 12 p.m. to 7 p.m. on Wednesday, 7 a.m. to 7 p.m. Thursday and Friday, and 7 a.m. to 6 p.m. on Saturday. **Pilots should plan on arriving between these hours.**

Atlantic Aviation San Jose can make taxi arrangements upon your request.

**Hertz rental cars** are available through Atlantic Aviation at 408-297-7552 or by calling Hertz directly at 408-924-0935, AOPA discount code: CDP 10232.

## **SJC VFR ARRIVALS**

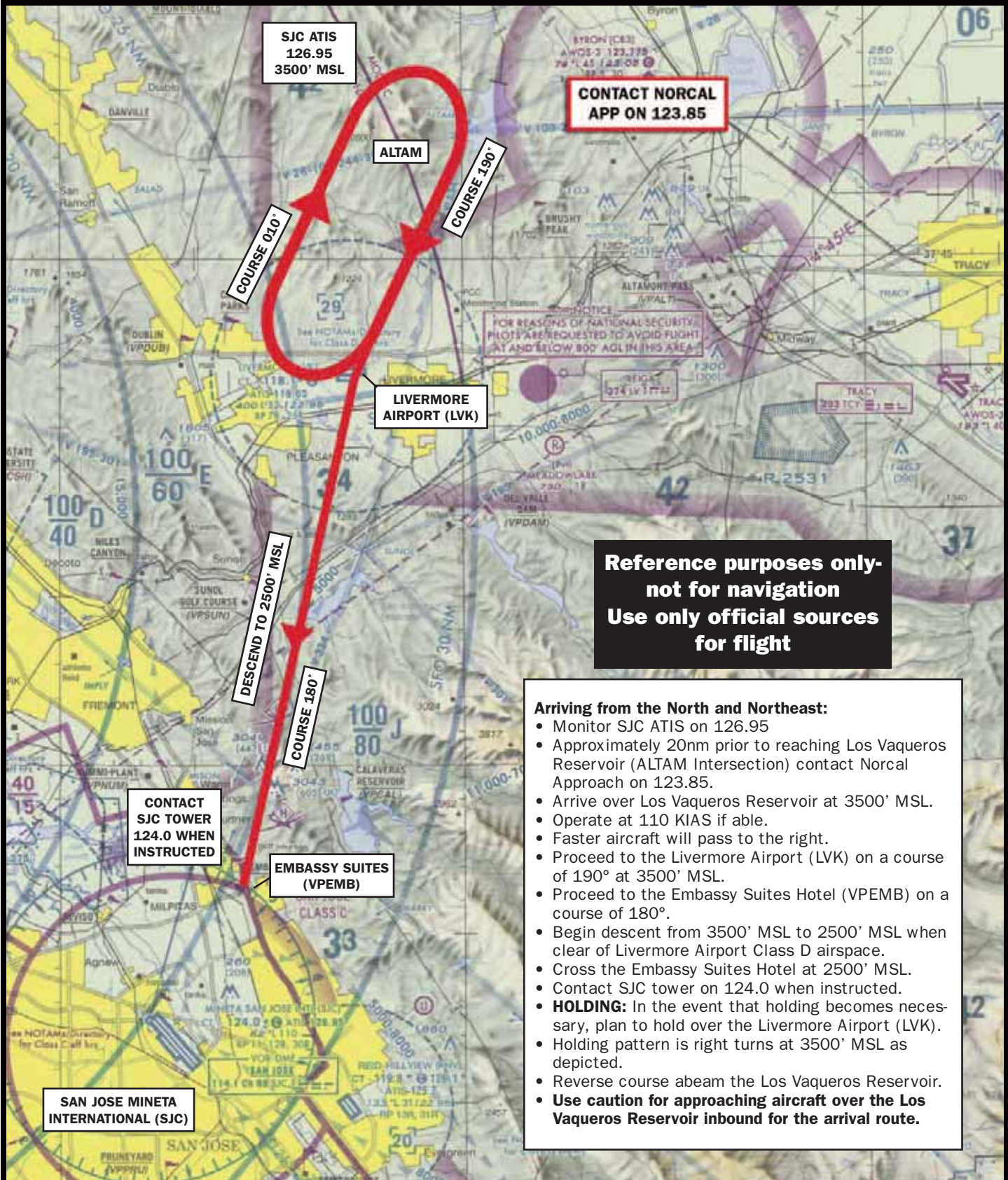
Pilots should use and be familiar with the current San Francisco Sectional Aeronautical Chart and the San Francisco VFR Terminal Area Chart for all VFR navigation into Norman Y. Mineta San Jose International (SJC). The procedures and graphics below are to be used for reference purposes only. Arrival routes are based upon visual features, nav aids, and intersections printed on the San Francisco Sectional and TAC that pilots must become familiar with before flying to the event.

**Arriving SJC from the North and Northeast:**

- Monitor SJC ATIS on 126.95
- Approximately 20nm prior to reaching Los Vaqueros Reservoir (ALTAM Intersection) contact Norcal Approach on 123.85.
- Arrive over Los Vaqueros Reservoir at 3500' MSL.
- Operate at 110 KIAS if able.
- Faster aircraft will pass to the right.
- Proceed to the Livermore Airport (LVK) on a course of 190° at 3500' MSL.
- Proceed to the Embassy Suites Hotel (VPEMB) on a course of 180°.
- Begin descent from 3500' MSL to 2500' MSL when clear of Livermore Airport Class D airspace.
- Cross the Embassy Suites Hotel at 2500' MSL.
- Contact SJC tower on 124.0 when instructed.
- **HOLDING:** In the event that holding becomes necessary, plan to hold over the Livermore Airport (LVK).
- Holding pattern is right turns at 3500' MSL as depicted.
- Reverse course abeam the Los Vaqueros Reservoir.
- **Use caution for approaching aircraft over the Los Vaqueros Reservoir inbound for the arrival route.**

# AOPA EXPO 2008

Norman Y. Mineta San Jose International (SJC) VFR Arrival Procedures,  
North and Northeast.  
In effect November 5-9, 2008

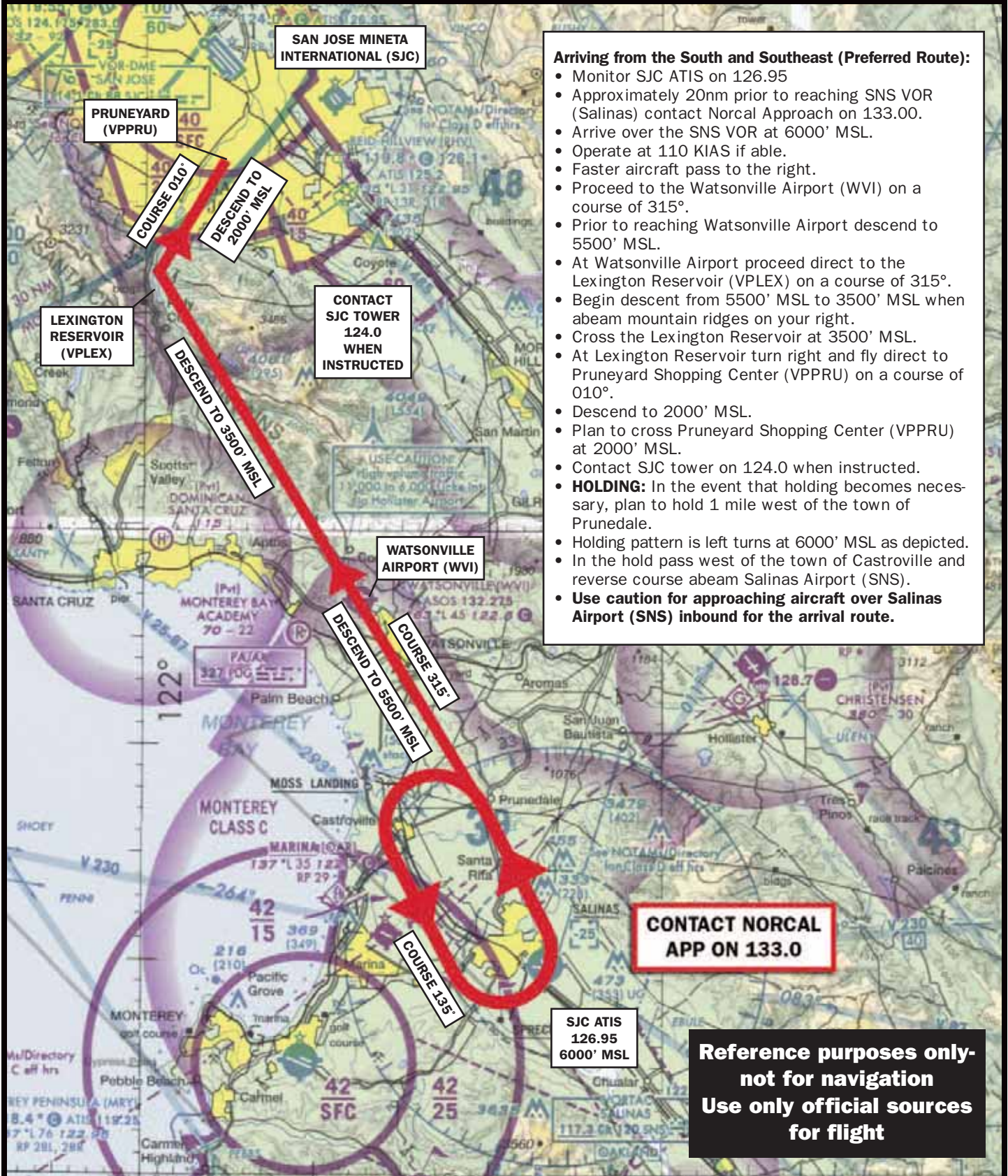


**Arriving SJC from the South and Southeast (Preferred Route):**

- Monitor SJC ATIS on 126.95
- Approximately 20nm prior to reaching SNS VOR (Salinas) contact Norcal Approach on 133.00.
- Arrive over the SNS VOR at 6000' MSL.
- Operate at 110 KIAS if able.
- Faster aircraft pass to the right.
- Proceed to the Watsonville Airport (WVI) on a course of 315°.
- Prior to reaching Watsonville Airport descend to 5500' MSL.
- At Watsonville Airport proceed direct to the Lexington Reservoir (VPLEX) on a course of 315°.
- Begin descent from 5500' MSL to 3500' MSL when abeam mountain ridges on your right.
- Cross the Lexington Reservoir at 3500' MSL.
- At Lexington Reservoir turn right and fly direct to Pruneyard Shopping Center (VPPRU) on a course of 010°.
- Descend to 2000' MSL.
- Plan to cross Pruneyard Shopping Center (VPPRU) at 2000' MSL.
- Contact SJC tower on 124.0 when instructed.
- **HOLDING:** In the event that holding becomes necessary, plan to hold 1 mile west of the town of Prunedale.
- Holding pattern is left turns at 6000' MSL as depicted.
- In the hold pass west of the town of Castroville and reverse course abeam Salinas Airport (SNS).
- **Use caution for approaching aircraft over Salinas Airport (SNS) inbound for the arrival route.**

# AOPA EXPO 2008

## Norman Y. Mineta San Jose International (SJC) VFR Arrival Procedures, South and Southeast (Preferred Route). In effect November 5-9, 2008



- Arriving from the South and Southeast (Preferred Route):**
- Monitor SJC ATIS on 126.95
  - Approximately 20nm prior to reaching SNS VOR (Salinas) contact Norcal Approach on 133.00.
  - Arrive over the SNS VOR at 6000' MSL.
  - Operate at 110 KIAS if able.
  - Faster aircraft pass to the right.
  - Proceed to the Watsonville Airport (WVI) on a course of 315°.
  - Prior to reaching Watsonville Airport descend to 5500' MSL.
  - At Watsonville Airport proceed direct to the Lexington Reservoir (VPLEX) on a course of 315°.
  - Begin descent from 5500' MSL to 3500' MSL when abeam mountain ridges on your right.
  - Cross the Lexington Reservoir at 3500' MSL.
  - At Lexington Reservoir turn right and fly direct to Pruneyard Shopping Center (VPPRU) on a course of 010°.
  - Descend to 2000' MSL.
  - Plan to cross Pruneyard Shopping Center (VPPRU) at 2000' MSL.
  - Contact SJC tower on 124.0 when instructed.
  - **HOLDING:** In the event that holding becomes necessary, plan to hold 1 mile west of the town of Prunedale.
  - Holding pattern is left turns at 6000' MSL as depicted.
  - In the hold pass west of the town of Castroville and reverse course abeam Salinas Airport (SNS).
  - **Use caution for approaching aircraft over Salinas Airport (SNS) inbound for the arrival route.**

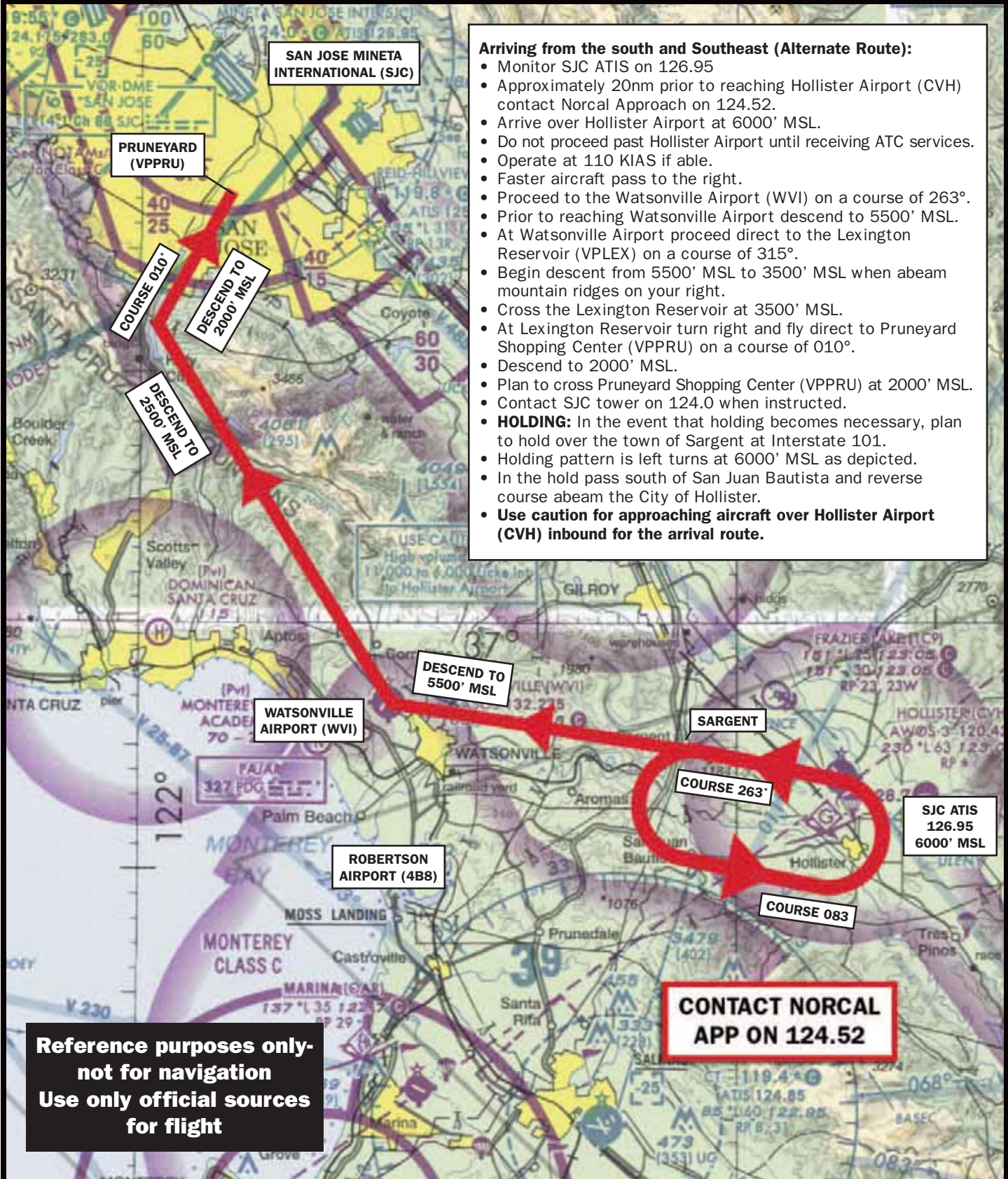
**Reference purposes only -  
not for navigation  
Use only official sources  
for flight**

**Arriving SJC from the south and Southeast (Alternate Route):**

- Monitor SJC ATIS on 126.95
- Approximately 20nm prior to reaching Hollister Airport (CVH) contact Norcal Approach on 124.52.
- Arrive over Hollister Airport at 6000' MSL.
- Do not proceed past Hollister Airport until receiving ATC services.
- Operate at 110 KIAS if able.
- Faster aircraft pass to the right.
- Proceed to the Watsonville Airport (WVI) on a course of 263°.
- Prior to reaching Watsonville Airport descend to 5500' MSL.
- At Watsonville Airport proceed direct to the Lexington Reservoir (VPLEX) on a course of 315°.
- Begin descent from 5500' MSL to 3500' MSL when abeam mountain ridges on your right.
- Cross the Lexington Reservoir at 3500' MSL.
- At Lexington Reservoir turn right and fly direct to Pruneyard Shopping Center (VPPRU) on a course of 010°.
- Descend to 2000' MSL.
- Plan to cross Pruneyard Shopping Center (VPPRU) at 2000' MSL.
- Contact SJC tower on 124.0 when instructed.
- **HOLDING:** In the event that holding becomes necessary, plan to hold over the town of Sargent at Interstate 101.
- Holding pattern is left turns at 6000' MSL as depicted.
- In the hold pass south of San Juan Bautista and reverse course abeam the City of Hollister.
- **Use caution for approaching aircraft over Hollister Airport (CVH) inbound for the arrival route.**

# AOPA EXPO 2008

## Norman Y. Mineta San Jose International (SJC) VFR Arrival Procedures, South and Southeast (Alternate Route): In effect November 5-9, 2008



### Arriving from the south and Southeast (Alternate Route):

- Monitor SJC ATIS on 126.95
- Approximately 20nm prior to reaching Hollister Airport (CVH) contact Norcal Approach on 124.52.
- Arrive over Hollister Airport at 6000' MSL.
- Do not proceed past Hollister Airport until receiving ATC services.
- Operate at 110 KIAS if able.
- Faster aircraft pass to the right.
- Proceed to the Watsonville Airport (WVI) on a course of 263°.
- Prior to reaching Watsonville Airport descend to 5500' MSL.
- At Watsonville Airport proceed direct to the Lexington Reservoir (VPLEX) on a course of 315°.
- Begin descent from 5500' MSL to 3500' MSL when abeam mountain ridges on your right.
- Cross the Lexington Reservoir at 3500' MSL.
- At Lexington Reservoir turn right and fly direct to Pruneyard Shopping Center (VPPRU) on a course of 010°.
- Descend to 2000' MSL.
- Plan to cross Pruneyard Shopping Center (VPPRU) at 2000' MSL.
- Contact SJC tower on 124.0 when instructed.
- **HOLDING:** In the event that holding becomes necessary, plan to hold over the town of Sargent at Interstate 101.
- Holding pattern is left turns at 6000' MSL as depicted.
- In the hold pass south of San Juan Bautista and reverse course abeam the City of Hollister.
- **Use caution for approaching aircraft over Hollister Airport (CVH) inbound for the arrival route.**

**Departing SJC runways 29 and 30 South and Southeast:**

- Comply with San Jose Tower initial departure instructions.
- Remain at or below 5500' MSL.
- Cross southwest of the Pruneyard Shopping Center (VPPRU).
- Remain at least 3nm southwest of the SJC runway 12R/30L extended centerline.
- Remain at or below 5500' MSL until passing abeam South County Airport (E16).

**Departing SJC runways 29 and 30 East:**

- Comply with San Jose Tower initial departure instructions.
- Remain Northeast of Highway 101.
- Remain at or below 5500' MSL until 30nm from SJC.

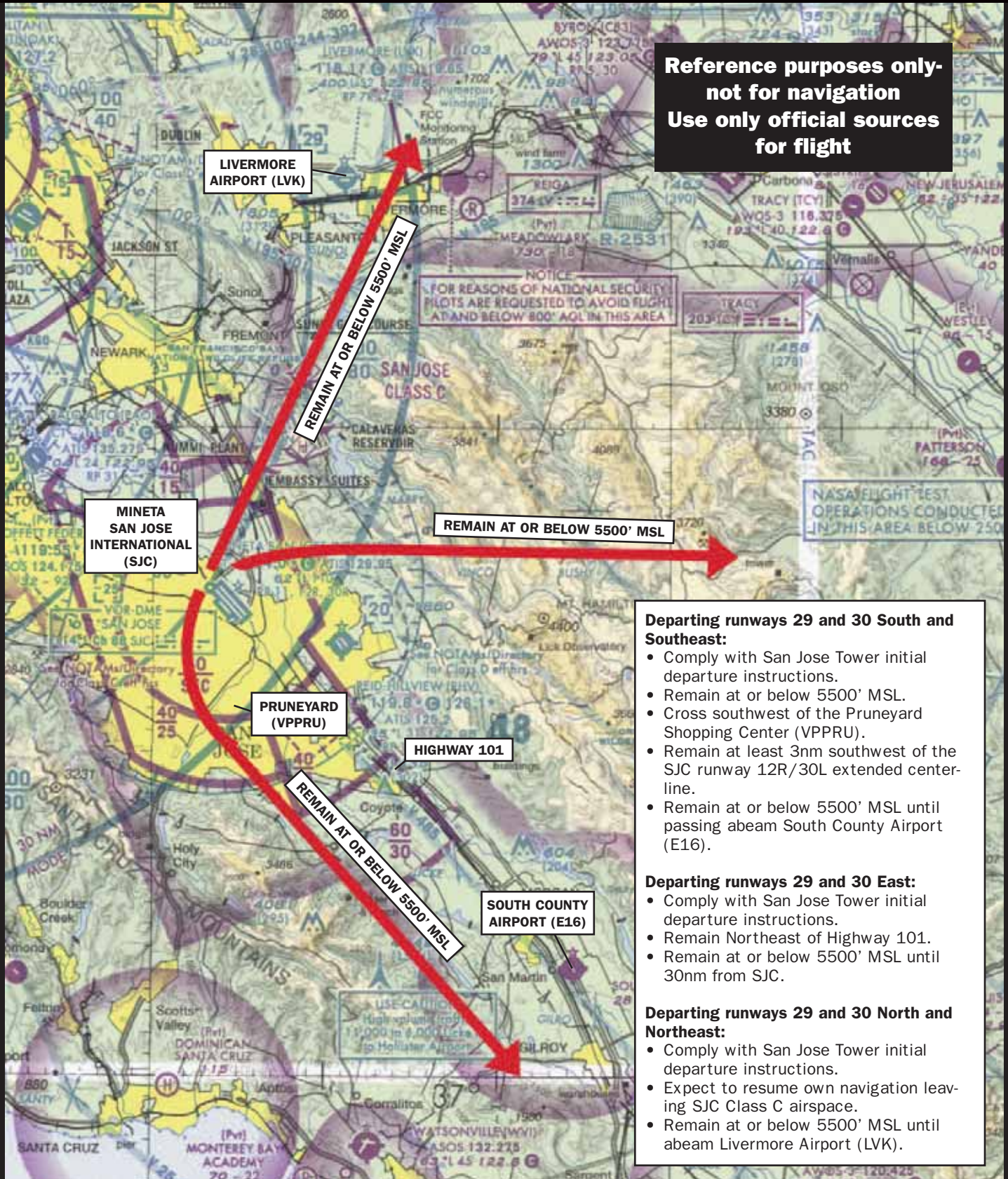
**Departing SJC runways 29 and 30 North and Northeast:**

- Comply with San Jose Tower initial departure instructions.
- Expect to resume own navigation leaving SJC Class C airspace.
- Remain at or below 5500' MSL until abeam Livermore Airport (LVK).

# AOPA EXPO 2008

Norman Y. Mineta San Jose International (SJC) VFR Departure Procedures  
Runways 29 and 30.  
In effect November 5-9, 2008

Reference purposes only -  
not for navigation  
Use only official sources  
for flight



### Departing runways 29 and 30 South and Southeast:

- Comply with San Jose Tower initial departure instructions.
- Remain at or below 5500' MSL.
- Cross southwest of the Pruneyard Shopping Center (VPPRU).
- Remain at least 3nm southwest of the SJC runway 12R/30L extended centerline.
- Remain at or below 5500' MSL until passing abeam South County Airport (E16).

### Departing runways 29 and 30 East:

- Comply with San Jose Tower initial departure instructions.
- Remain Northeast of Highway 101.
- Remain at or below 5500' MSL until 30nm from SJC.

### Departing runways 29 and 30 North and Northeast:

- Comply with San Jose Tower initial departure instructions.
- Expect to resume own navigation leaving SJC Class C airspace.
- Remain at or below 5500' MSL until abeam Livermore Airport (LVK).

**Departing SJC runways 11 and 12 South and Southeast:**

- Comply with San Jose Tower initial departure instructions.
- Expect to cross north of Reid-Hillview Airport (RHV).
- Remain east of highway 101.
- Remain at or below 5500' MSL until passing abeam South County Airport (E16)

**Departing SJC runways 11 and 12 North and Northeast:**

- Comply with San Jose Tower initial departure instructions.
- Expect to resume own navigation leaving SJC Class C airspace.
- Remain at or below 5500" MSL until abeam Livermore Airport (LVK).

# AOPA EXPO 2008

## Norman Y. Mineta San Jose International (SJC) VFR Departure Procedures Runways 11 and 12 In effect November 5-9, 2008

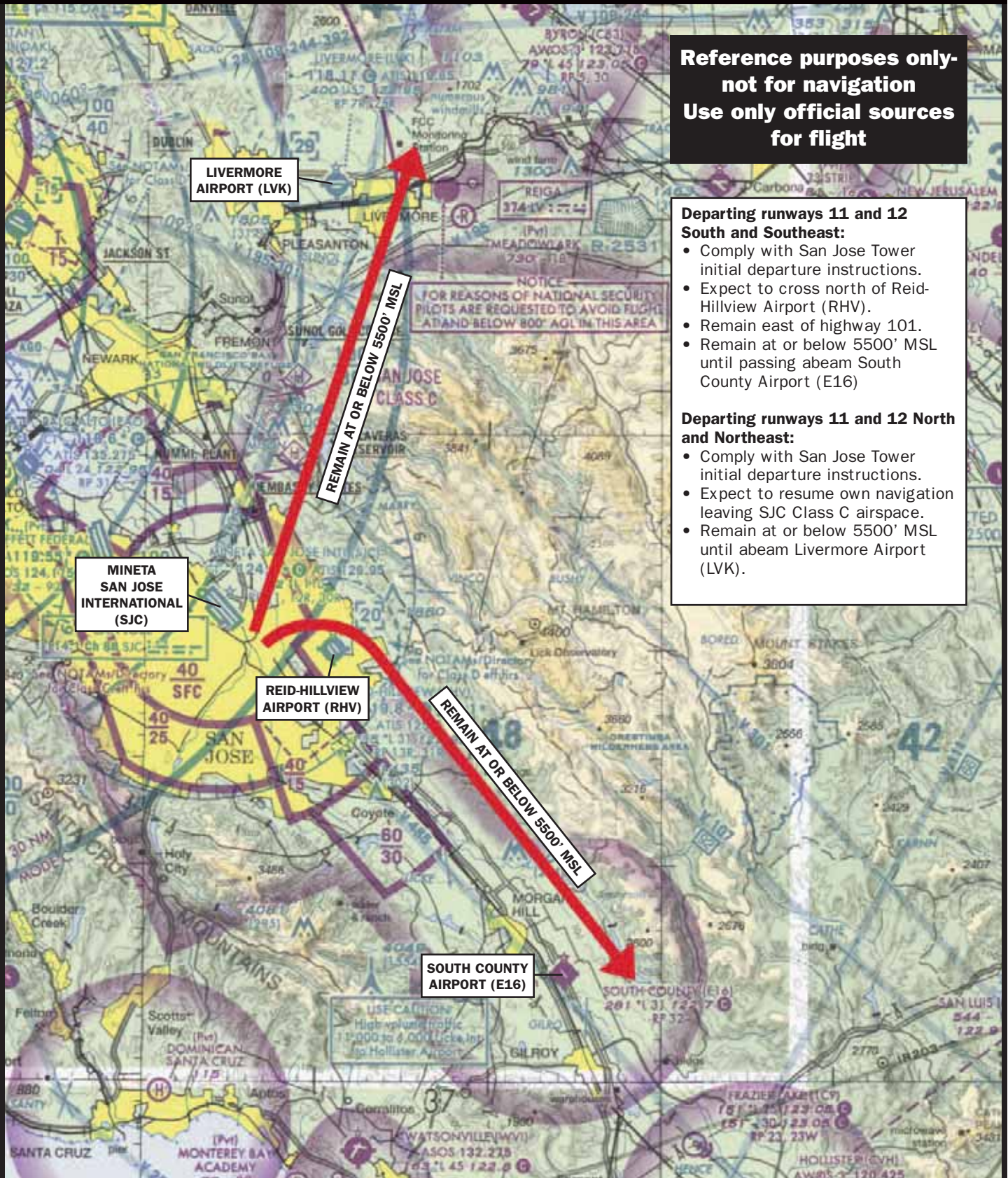
**Reference purposes only  
not for navigation  
Use only official sources  
for flight**

### Departing runways 11 and 12 South and Southeast:

- Comply with San Jose Tower initial departure instructions.
- Expect to cross north of Reid-Hillview Airport (RHV).
- Remain east of highway 101.
- Remain at or below 5500' MSL until passing abeam South County Airport (E16)

### Departing runways 11 and 12 North and Northeast:

- Comply with San Jose Tower initial departure instructions.
- Expect to resume own navigation leaving SJC Class C airspace.
- Remain at or below 5500' MSL until abeam Livermore Airport (LVK).



# REID-HILLVIEW OF SANTA CLARA COUNTY (RHV) SPECIAL ARRIVAL PROCEDURES

**Procedures in effect  
Wednesday through Sunday unless otherwise instructed by ATC**

RHV ATC Tower operates from 7:00 a.m. to 10:00 p.m. local time daily.

RHV FREQUENCIES	
APPROACH CONTROL	123.85, 124.52
TOWER	119.8
GROUND CONTROL	121.65
ATIS	125.2

## IFR ARRIVALS

Although reservations are not required, the FAA will be utilizing traffic flow management for IFR aircraft during the event.

Due to heavy arrival traffic for the event, IFR ARRIVALS AND DEPARTURES WILL BE SEVERLY LIMITED. You can expect SIGNIFICANT DELAYS at your departure point or enroute to RHV. VFR flight on the designated arrival routes is highly recommended if weather permits.

## SECURING AIRCRAFT

After shutting down, stay with your aircraft. A van will transport you to the registration area. Additionally, **pilots are asked to bring their own chocks, tiedowns, and ground anchors.**

## RHV TRANSPORTATION

Free shuttle bus transportation will be available to and from the convention center from 12 p.m. to 7 p.m. on Wednesday, 7 a.m. to 7 p.m. Thursday and Friday, and 7 a.m. to 6 p.m. on Saturday. **Pilots should plan on arriving between these hours.**

## RENTAL CARS:

**Enterprise rental cars are available on the field.** Contact Enterprise directly at 408-937-4988.

Avis: 408-993-2366, AOPA Discount Code: AWD A451300

Alamo: 408-288-4650, AOPA Discount Code: JE and ID434861

Hertz: 408-578-4021, AOPA Discount Code: CDP 10232

## TAXIS:

United: 408-971-1111

Alpha: 408-295-9500

Yellow: 408-934-1885

Checker: 408-293-1199

San Jose: 408-437-8700

## RHV VFR ARRIVALS

Pilots should use and be familiar with the current San Francisco Sectional Aeronautical Chart and the San Francisco VFR Terminal Area Chart for all VFR navigation into Reid-Hillview of Santa Clara County (RHV). The procedures and graphics below are to be used for reference purposes only. Arrival routes are based upon visual features, nav aids, and intersections printed on the San Francisco Sectional and TAC that pilots must become familiar with before flying to the event.

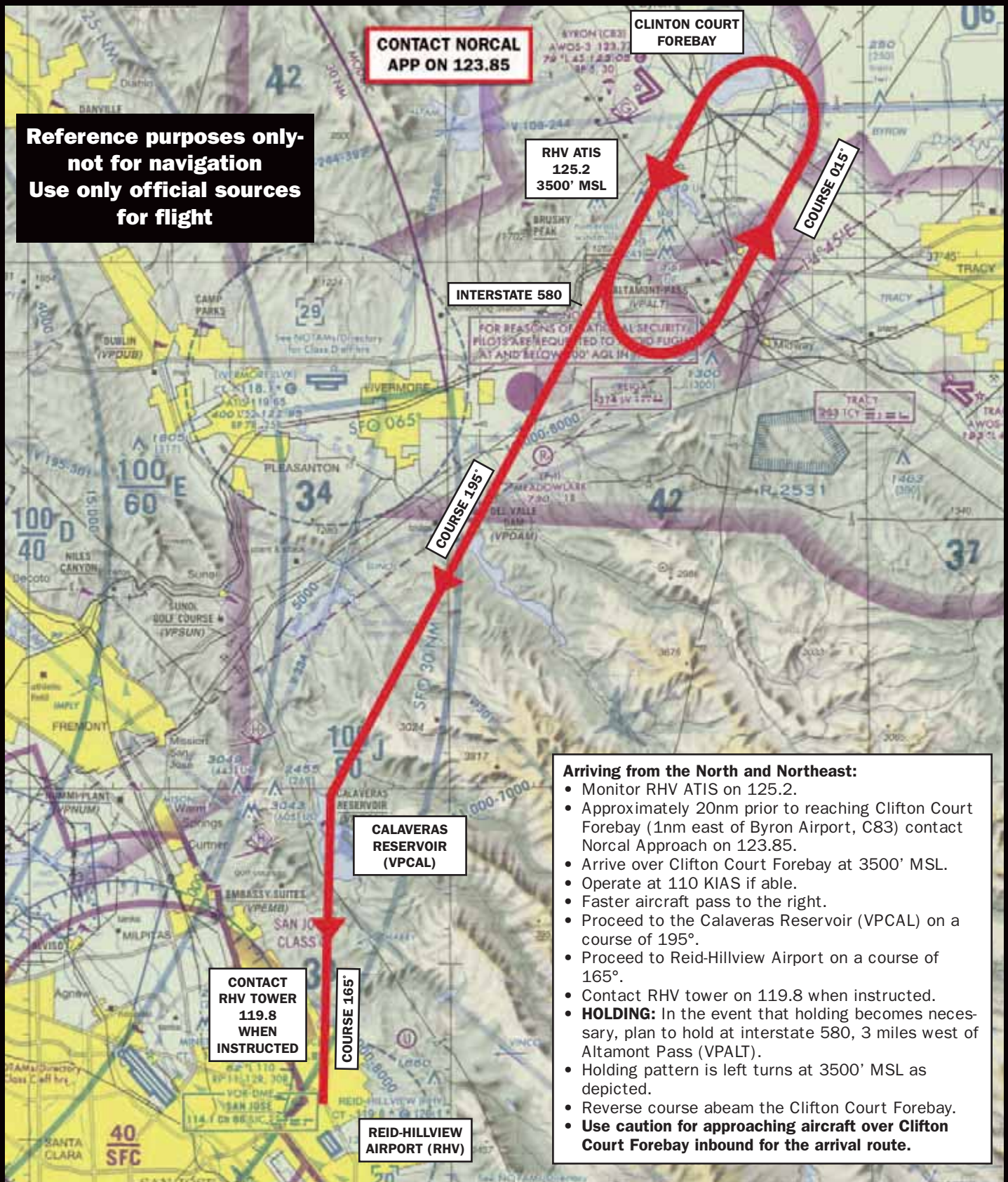
### Arriving RHV from the North and Northeast:

- Monitor RHV ATIS on 125.2.
- Approximately 20nm prior to reaching Clifton Court Forebay (1nm east of Byron Airport, C83) contact Norcal Approach on 123.85.
- Arrive over Clifton Court Forebay at 3500' MSL.
- Operate at 110 KIAS if able.
- Faster aircraft pass to the right.
- Proceed to the Calaveras Reservoir (VPCAL) on a course of 195°.
- Proceed to Reid-Hillview Airport on a course of 165°.
- Contact RHV tower on 119.8 when instructed.
- **HOLDING:** In the event that holding becomes necessary, plan to hold at interstate 580, 3 miles west of Altamont Pass (VPALT).
- Holding pattern is left turns at 3500' MSL as depicted.
- Reverse course abeam the Clifton Court Forebay.
- **Use caution for approaching aircraft over Clifton Court Forebay inbound for the arrival route.**

# AOPA EXPO 2008

Reid-Hillview of Santa Clara County (RHV) VFR Arrival Procedures,  
North and Northeast.  
In effect November 5-9, 2008

Reference purposes only -  
not for navigation  
Use only official sources  
for flight



CONTACT NORCAL  
APP ON 123.85

CLIFTON COURT  
FOREBAY

RHV ATIS  
125.2  
3500' MSL

INTERSTATE 580

COURSE 195°

CALAVERAS  
RESERVOIR  
(VPCAL)

CONTACT  
RHV TOWER  
119.8  
WHEN  
INSTRUCTED

COURSE 165°

REID-HILLVIEW  
AIRPORT (RHV)

- Arriving from the North and Northeast:**
- Monitor RHV ATIS on 125.2.
  - Approximately 20nm prior to reaching Clifton Court Forebay (1nm east of Byron Airport, C83) contact Norcal Approach on 123.85.
  - Arrive over Clifton Court Forebay at 3500' MSL.
  - Operate at 110 KIAS if able.
  - Faster aircraft pass to the right.
  - Proceed to the Calaveras Reservoir (VPCAL) on a course of 195°.
  - Proceed to Reid-Hillview Airport on a course of 165°.
  - Contact RHV tower on 119.8 when instructed.
  - **HOLDING:** In the event that holding becomes necessary, plan to hold at interstate 580, 3 miles west of Altamont Pass (VPALT).
  - Holding pattern is left turns at 3500' MSL as depicted.
  - Reverse course abeam the Clifton Court Forebay.
  - **Use caution for approaching aircraft over Clifton Court Forebay inbound for the arrival route.**

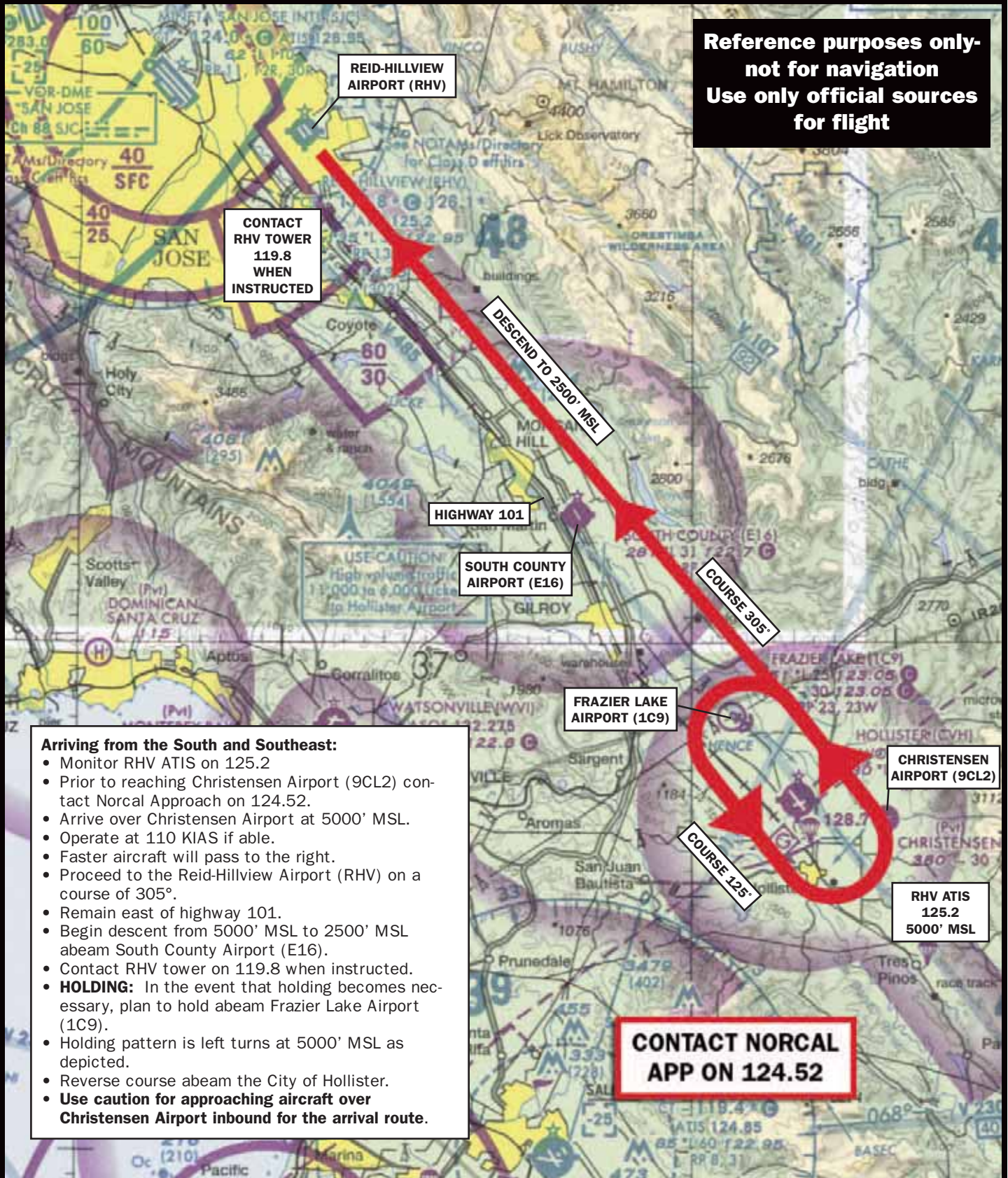
**Arriving RHV from the South and Southeast:**

- Monitor RHV ATIS on 125.2
- Prior to reaching Christensen Airport (9CL2) contact Norcal Approach on 124.52.
- Arrive over Christensen Airport at 5000' MSL.
- Operate at 110 KIAS if able.
- Faster aircraft will pass to the right.
- Proceed to the Reid-Hillview Airport (RHV) on a course of 305°.
- Remain east of highway 101.
- Begin descent from 5000' MSL to 2500' MSL abeam South County Airport (E16).
- Contact RHV tower on 119.8 when instructed.
- **HOLDING:** In the event that holding becomes necessary, plan to hold abeam Frazier Lake Airport (1C9).
- Holding pattern is left turns at 5000' MSL as depicted.
- Reverse course abeam the City of Hollister.
- **Use caution for approaching aircraft over Christensen Airport inbound for the arrival route.**

# AOPA EXPO 2008

## Reid-Hillview of Santa Clara County (RHV) VFR Arrival Procedures, South and Southeast. In effect November 5-9, 2008

Reference purposes only-  
not for navigation  
Use only official sources  
for flight



### Arriving from the South and Southeast:

- Monitor RHV ATIS on 125.2
- Prior to reaching Christensen Airport (9CL2) contact Norcal Approach on 124.52.
- Arrive over Christensen Airport at 5000' MSL.
- Operate at 110 KIAS if able.
- Faster aircraft will pass to the right.
- Proceed to the Reid-Hillview Airport (RHV) on a course of 305°.
- Remain east of highway 101.
- Begin descent from 5000' MSL to 2500' MSL abeam South County Airport (E16).
- Contact RHV tower on 119.8 when instructed.
- **HOLDING:** In the event that holding becomes necessary, plan to hold abeam Frazier Lake Airport (1C9).
- Holding pattern is left turns at 5000' MSL as depicted.
- Reverse course abeam the City of Hollister.
- **Use caution for approaching aircraft over Christensen Airport inbound for the arrival route.**

**Departing RHV North and Northeast:**

- Comply with Reid-Hillview Tower initial departure instructions.
- Remain east of Interstate 680 towards Calaveras Reservoir (VPCAL).
- Remain at or below 5500' MSL until abeam Livermore Airport (LVK).

**Departing RHV East and South:**

- Comply with Reid-Hillview Tower initial departure instructions.
- Remain east of Highway 101.
- Remain at or below 5500' MSL until abeam south County Airport (E16).

# AOPA EXPO 2008

## Reid-Hillview of Santa Clara County (RHV) VFR Departure Procedures In effect November 5-9, 2008

**Reference purposes only -  
not for navigation  
Use only official sources  
for flight**

### Departing North and Northeast:

- Comply with Reid-Hillview Tower initial departure instructions.
- Remain east of Interstate 680 towards Calaveras Reservoir (VPCAL).
- Remain at or below 5500' MSL until abeam Livermore Airport (LVK).

### Departing East and South:

- Comply with Reid-Hillview Tower initial departure instructions.
- Remain east of Highway 101.
- Remain at or below 5500' MSL until abeam south County Airport (E16).

