



October 4, 5, 6, 2007

Aircraft Arrival and Departure Procedures

AREA OVERVIEW

AOPA is proud to present the 2007 Expo in Hartford Connecticut. This is the first time that AOPA Expo has been held in the New England Region. With the aircraft display, seminars, vendors, and general sessions, Expo has something for everyone. Combine that with shopping, attractions, and the spectacular fall foliage, and Hartford is the place to be in early October.

The popular Expo aircraft display will be at the Hartford-Brainard Airport. The display will be open on Thursday and Friday from 9 a.m. to 6 p.m. and on Saturday from 9 a.m. to 4 p.m. Free shuttle bus service to the aircraft display will be provided between the convention center and Hartford-Brainard Airport on Thursday and Friday from 8:30 a.m. to 6:30 p.m. and on Saturday from 8:30 a.m. to 4:30 p.m.

Free shuttle bus transportation will also be provided for GA aircraft flying into Expo at Hartford-Brainard Airport (HFD) and Bradley International Airport (BDL). The shuttle will run from both airports and the convention center on Wednesday 12 noon to 7 p.m., Thursday and Friday 7 a.m. to 7 p.m., and Saturday 7 a.m. to 6 p.m. **You will be responsible for your own transportation if arriving outside of the shuttle bus hours of operation.**

Six VFR arrival routes have been established to accommodate the anticipated number of aircraft flying in to the event. Three arrival routes lead to Hartford-Brainard Airport (HFD) and three to Bradley International Airport (BDL); **both airports are considered primary airports for the event.** Pilots are reminded to remain extremely vigilant in scanning for other traffic due to the increased number of operations expected for the event.

Upon contacting the tower at either Bradley or Brainard, be sure to identify yourself as "for AOPA" to assure that you are directed correctly.

All aircraft must be able to maintain two-way radio communication to land at either Hartford-Brainard Airport (HFD) or Bradley International Airport (BDL). “NO RADIO” aircraft must utilize other area airports.

In the event that parking becomes full at Hartford-Brainard Airport (HFD), a notice will be broadcast on the HFD ATIS alerting pilots to the condition. At that point, aircraft intending to land at Hartford-Brainard Airport (HFD) shall fly the special arrival procedures as published for Bradley International (BDL) for full Expo services. In the event that parking capacity is reached at both airports, ATIS will advise the need to divert to other area airports.

In addition to HFD and BDL, there are many fine airports in the Hartford area. Two additional airports, Simsbury (4B9) and Windham (IJD), will be providing limited transportation to Expo attendees. See last page for details.

Securing Aircraft—Due to the number of aircraft expected for Expo, special parking areas have been designated throughout both airports. Pilots are requested to bring chocks and tiedown gear.

Sponsoring FBOs

Three fine FBOs will be providing support at the two primary airports. At Bradley, services are provided by [Signature Flight Support](#) and [TAC Air](#). At Brainard, [Atlantic Aviation](#) will support attendee arrivals and the aircraft display.

No special arrangements are needed with these FBOs for your arrival at the AOPA convention. Pilots need only follow the arrival procedures in this document and follow ground instructions and marshallers to parking.

Parking Fee—Bradley and Brainard airports have prepared special parking areas, streamlined procedures, and modified the facility to assure you have an enjoyable airport experience. Atlantic, Signature, and TAC Air have increased staff, greatly enhanced their on-field crew and passenger transportation, and added resources to provide you with optimum service. The parking fee for day-trippers is \$25 (no overnight). The parking fee for the event is \$45 single engine, \$55 for twins; the one time parking fee covers your entire stay.

HARTFORD-BRAINARD AIRPORT (HFD)

SPECIAL ARRIVAL PROCEDURES

Procedures in effect
Wednesday through Sunday unless otherwise instructed by ATC

Midwest ATC, Inc. operates a contract ATC tower at HFD:
Tower operating hours are 0600 to 2400 EDT

HFD FREQUENCIES

Bradley Approach	134.2
Tower	119.6
Ground Control	121.6
Clearance Delivery	118.22
ATIS	126.45

HFD VFR ARRIVALS

Pilots should use and be familiar with the New York Sectional Aeronautical Chart for all VFR navigation into Hartford-Brainard Airport (HFD). The procedures and graphics below are to be used for planning purposes only. Routes are based upon visual features, nav aids, and intersections printed on the New York sectional that pilots must become familiar with before flying to the event.

Hartford-Brainard Airport (HFD) is in Class D airspace. Pilots must get ATIS information from the HFD ATIS on 126.45 and contact Bradley Approach on 134.2 at the appropriate position for each arrival route.

CAUTION:

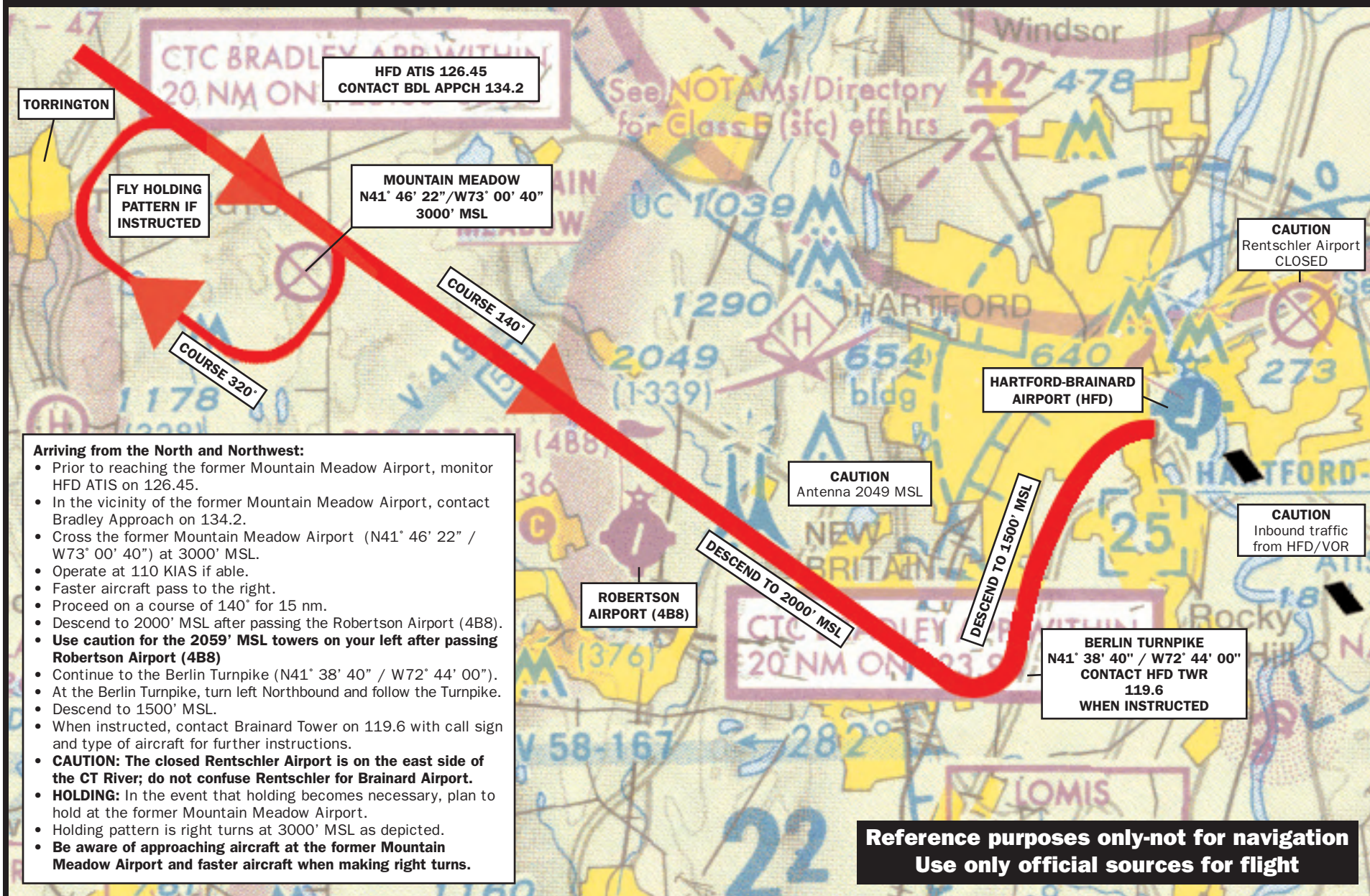
- Avoid Bradley International Airport (BDL) Class C airspace just north of Hartford-Brainard Airport (HFD).
- Plan to approach the airport from the southwest or southeast to avoid BDL Class C airspace, and to avoid VFR departure routes from HFD.
- If necessary, hold as depicted at the altitudes specified.

Arriving HFD from the north and northwest:

- Prior to reaching the former Mountain Meadow Airport, monitor HFD ATIS on 126.45.
- In the vicinity of the former Mountain Meadow Airport, contact Bradley Approach on 134.2.
- Cross the former Mountain Meadow Airport (N41° 46' 22" / W73° 00' 40") at 3,000 feet MSL.
- Operate at 110 KIAS if able.
- Faster aircraft pass to the right.
- Proceed on a course of 140° for 15 nm.
- Descend to 2,000 feet MSL after passing the Robertson Airport (4B8).
- **Use caution for the 2,049 feet MSL towers on your left after passing Robertson Airport (4B8).**
- Continue to the Berlin Turnpike (N41° 38' 40" / W72° 44' 00").
- At the Berlin Turnpike, turn left northbound and follow the turnpike.
- Descend to 1,500 feet MSL.
- When instructed, contact Brainard Tower on 119.6 with call sign and type of aircraft for further instructions.
- **CAUTION: The closed Rentschler Airport is on the east side of the Connecticut River; do not confuse Rentschler for Brainard Airport.**
- **HOLDING:** In the event that holding becomes necessary, plan to hold at the former Mountain Meadow Airport.
- Holding pattern is right turns at 3,000 feet MSL as depicted.
- **Be aware of approaching aircraft at the former Mountain Meadow Airport and faster aircraft when making right turns.**

AOPA EXPO 2007

Hartford-Brainard Airport (HFD) VFR Arrival Procedures, North and Northwest
October 4-6, 2007



Arriving HFD from the south:

- Prior to reaching the MAD VOR (Madison), monitor HFD ATIS on 126.45.
- Arrive over the MAD VOR at 3,000 feet MSL.
- Operate at 110 KIAS if able.
- Faster aircraft pass to the right.
- Proceed to the Goodspeed Airport (42B) on a course of 063°.
- Prior to reaching the Goodspeed Airport, descend to 2,500 feet MSL.
- Approaching Goodspeed Airport, contact Bradley Approach on 134.2.
- At Goodspeed Airport, turn left and fly direct to HFD VOR on a course of 350°.
- Prior to reaching HFD VOR descend to 2,000 feet MSL.
- Prior to reaching HFD VOR and when instructed, contact Brainard Tower on 119.6 with call sign and type of aircraft for further instructions.
- **Use caution for traffic merging from the right at the HFD VOR.**
- After passing HFD VOR, descend to 1,500 feet MSL.
- Proceed to the Hartford-Brainard Airport (HFD) on a course of 336°.
- Stay just east of the Connecticut River until entering the traffic pattern at Brainard Airport.
- **CAUTION: The closed Rentschler Airport is on the east side of the Connecticut River; do not confuse Rentschler for Brainard Airport.**
- **HOLDING:** In the event that holding becomes necessary, plan to hold at Lake Pocotopaug.
- Holding pattern is right turns at 2,500 feet MSL as depicted.
- In the hold, pass east of Salmon River Airport (9B8) and east of Moodus Reservoir as depicted.
- **Be aware of approaching aircraft at Goodspeed Airport from the southwest and faster aircraft when making right turns.**

AOPA EXPO 2007

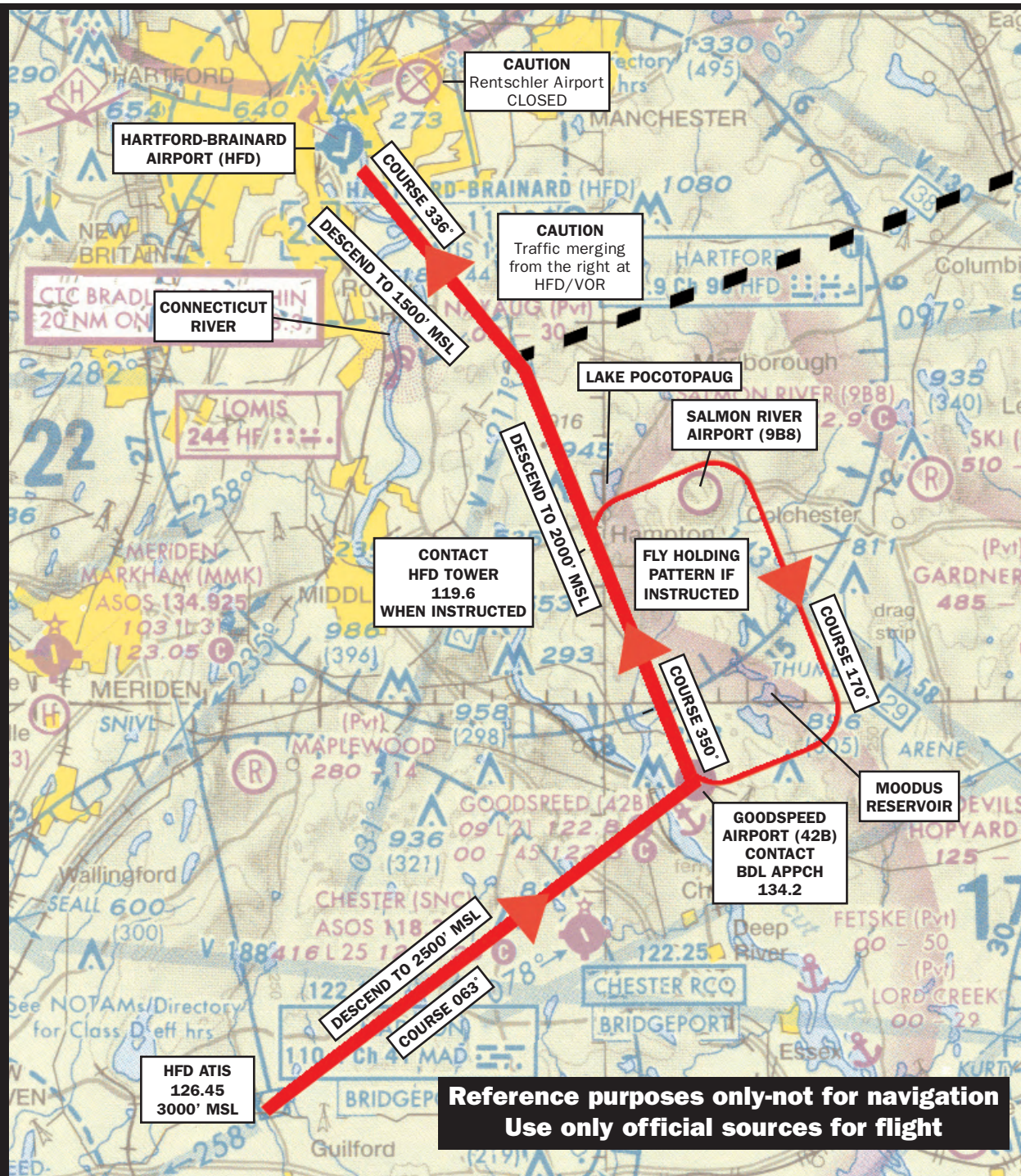
Hartford-Brainard Airport (HFD)

VFR Arrival Procedures, South

October 4-6, 2007

Arriving From The South:

- Prior to reaching the MAD VOR (Madison) monitor HFD ATIS on 126.45.
- Arrive over the MAD VOR at 3000' MSL.
- Operate at 110 KIAS if able.
- Faster aircraft pass to the right.
- Proceed to the Goodspeed Airport (42B) on a course of 063°.
- Prior to reaching the Goodspeed Airport descend to 2500' MSL.
- Approaching Goodspeed Airport contact Bradley Approach on 134.2.
- At Goodspeed Airport turn left and fly direct to HFD VOR on a course of 350°.
- Prior to reaching HFD VOR descend to 2000' MSL.
- Prior to reaching HFD VOR and when instructed, contact Brainard Tower on 119.6 with call sign and type of aircraft for further instructions.
- **Use caution for traffic merging from the right at the HFD VOR.**
- After passing HFD VOR descend to 1500' MSL.
- Proceed to the Hartford-Brainard Airport (HFD) on a course of 336°.
- Stay just east of the CT River until entering the traffic pattern at Brainard Airport.
- **CAUTION: The closed Rentschler Airport is on the east side of the CT River; do not confuse Rentschler for Brainard Airport.**
- **HOLDING:** In the event that holding becomes necessary, plan to hold at Lake Pocotopaug.
- Holding pattern is right turns at 2500' MSL as depicted.
- In the hold pass east of Salmon River Airport (9B8) and east of Moodus Reservoir as depicted.
- **Be aware of approaching aircraft at Goodspeed Airport from the southwest and faster aircraft when making right turns.**



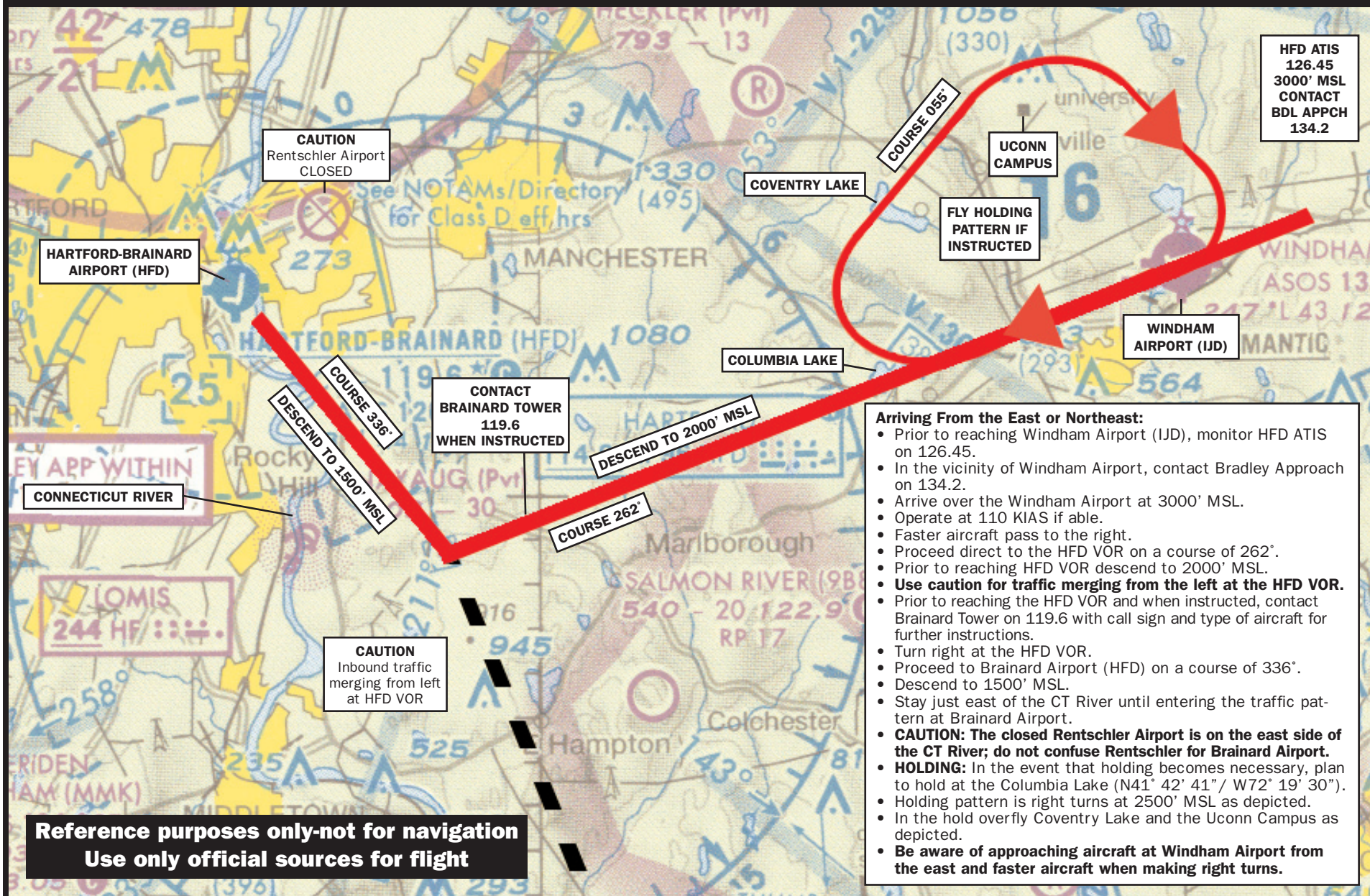
Arriving HFD from the east or northeast:

- Prior to reaching Windham Airport (IJD), monitor HFD ATIS on 126.45.
- In the vicinity of Windham Airport, contact Bradley Approach on 134.2.
- Arrive over the Windham Airport at 3,000 feet MSL.
- Operate at 110 KIAS if able.
- Faster aircraft pass to the right.
- Proceed direct to the HFD VOR on a course of 262°.
- Prior to reaching HFD VOR, descend to 2,000 feet MSL.
- **Use caution for traffic merging from the left at the HFD VOR.**
- Prior to reaching the HFD VOR and when instructed, contact Brainard Tower on 119.6 with call sign and type of aircraft for further instructions.
- Turn right at the HFD VOR.
- Proceed to Brainard Airport (HFD) on a course of 336°.
- Descend to 1,500 feet MSL.
- Stay just east of the Connecticut River until entering the traffic pattern at Brainard Airport.
- **CAUTION: The closed Rentschler Airport is on the east side of the Connecticut River; do not confuse Rentschler for Brainard Airport.**
- **HOLDING:** In the event that holding becomes necessary, plan to hold at Columbia Lake (N41° 42' 41''/ W72° 19' 30'').
- Holding pattern is right turns at 2,500 feet MSL as depicted.
- In the hold over fly Coventry Lake and the Uconn Campus as depicted.

Be aware of approaching aircraft at Windham Airport from the east and faster aircraft when making right turns.

AOPA EXPO 2007

Hartford-Brainard Airport (HFD) VFR Arrival Procedures, East and Northeast October 4-6, 2007





CLOSED
Rentschler
Airport

Hartford-Brainard
Airport (HFD)



© 2007 Tele Atlas
Image © 2007 DigitalGlobe
© 2007 Sanborn

Image MassGIS, Commonwealth of Massachusetts EOEA

© 2007 Google

IFR ARRIVALS

Although reservations are not required, the FAA will be utilizing traffic flow management for IFR aircraft during the event.

Due to heavy arrival traffic for the event and regular regional traffic, IFR ARRIVALS AND DEPARTURES WILL BE SEVERLY LIMITED. You can expect SIGNIFICANT DELAYS at your departure point or enroute to Hartford. VFR flight via the published routes is highly recommended if weather permits.

LANDING/PARKING

Expect to exit the runway as quickly and as safely as possible. ATC will not be providing taxi instructions. Instead, follow the marshallers to the designated parking areas.

After shutting down, stay with your aircraft. A van will transport you to the FBO's registration area. Additionally, **pilots are asked to bring their own chocks, tiedowns, and ground anchors.**

HFD TRANSPORTATION TO EXPO

Free shuttle bus transportation will be available to and from the convention center 12 p.m. to 7 p.m. on Wednesday, 7 a.m. to 7 p.m. on Thursday and Friday, and 7 a.m. to 6 p.m. on Saturday. **Pilots should plan on arriving between these hours to receive full services.**

Atlantic FBO will be operating 5 a.m. to midnight on Thursday and Friday and 6 a.m. to 10 p.m. on Saturday. After-hours services are not available.

Hertz rental cars are also available through the Atlantic FBO at 860/548-9334 or by calling Hertz directly at 800/654-2240 (AOPA discount code CDP # 10232).

HFD DEPARTURES

VFR

- Follow directions of the volunteer flagmen on the taxiways to the active runway.
- All VFR Runway 2 departures expect to depart from Runway 11-29 intersection (3,750 feet of usable runway).
- Contact Brainard Tower on 119.6 when you are number three for departure—not before.
- **Runway 2-20 will be the only departure runway available.**

Departing Runway 2:

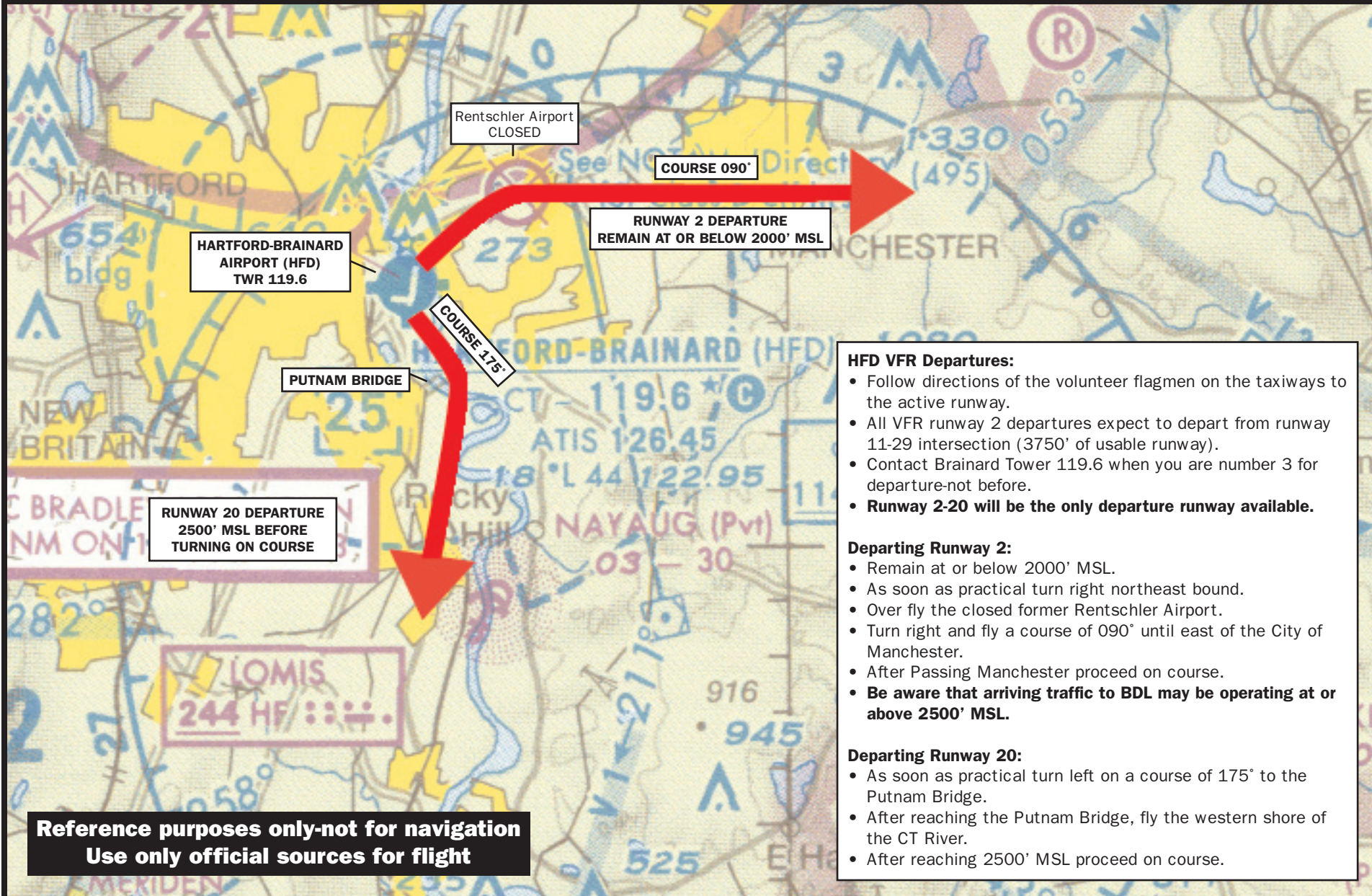
- Remain at or below 2,000 feet MSL.
- As soon as practical, turn right northeast-bound.
- Overfly the closed former Rentschler Airport.
- Turn right and fly a course of 090° until east of the city of Manchester.
- After passing Manchester, proceed on course.
- **Be aware that arriving traffic to BDL may be operating at or above 2,500 feet MSL.**

Departing Runway 20:

- As soon as practical, turn left on a course of 175° to the Putnam Bridge.
- After reaching the Putnam Bridge, fly the western shore of the Connecticut River.
- After reaching 2,500 feet MSL, proceed on course.

AOPA EXPO 2007

Hartford-Brainard Airport (HFD) VFR Departures
October 4-6, 2007



IFR—Call Clearance Delivery for IFR clearance prior to taxiing. After receiving ATC clearance, *monitor* Ground Control and follow the directions of the volunteer flagmen on the taxiways to the active runway. If departing Runway 2, taxi into the run-up pad and call Tower when you are number two for departure and state that you are IFR to obtain a release.

HELICOPTER TRAFFIC

Helicopter departures: Contact the tower prior to departing. Arrivals: Contact the tower prior to Class D airspace. Unless advised by the tower, depart to the south and arrive from the southeast or southwest; maintain at or below 500 feet within 5 miles of the airport.

BRADLEY INTERNATIONAL AIRPORT (BDL)

BDL ATC Tower is a 24-hour facility. BDL airspace is Class C and **requires establishing two-way radio communications with BDL ATC to enter.**

BDL FREQUENCIES	
APPROACH CONTROL	125.65
TOWER	120.3
GROUND CONTROL	121.9
CLEARANCE DELIVERY	121.75
ATIS	118.15

BDL VFR ARRIVALS

Pilots should use and be familiar with the New York Sectional Aeronautical Chart for all VFR navigation into Bradley International Airport (BDL). The procedures and graphics below are to be used for reference purposes only. Arrival routes are based upon visual features, nav aids, and intersections printed on the New York sectional that pilots must become familiar with before flying to the event.

Arriving BDL from the north and northwest:

- Prior to reaching the MOBBS intersection (N42° 07' 31" / W73° 15' 37"), monitor BDL ATIS on 118.15.
- Prior to reaching the MOBBS intersection, contact BDL Approach on 125.65 to establish radar identification and Class C services.
- Cross over MOBBS intersection at or above 3,500 feet MSL.
- Operate at 110 KIAS if able.
- Faster aircraft pass to the right.
- Proceed on a course of 147° via the HFD/VOR R-327 for 20 nm to the Barkhamsted Reservoir Dam.
- Expect radar vectors for sequencing at or prior to the Barkhamsted Reservoir Dam.
- **HOLDING:** In the event that holding becomes necessary, plan to hold at the West Branch Reservoir Dam.
- Holding pattern is left turns at 3,000 feet MSL as depicted.
- West Branch Reservoir Dam is located on your left approximately 5 nm prior to the Barkhamsted Reservoir Dam.
- **Be aware of inbound traffic on the arrival route when making left turns.**

Arriving BDL from the west or south:

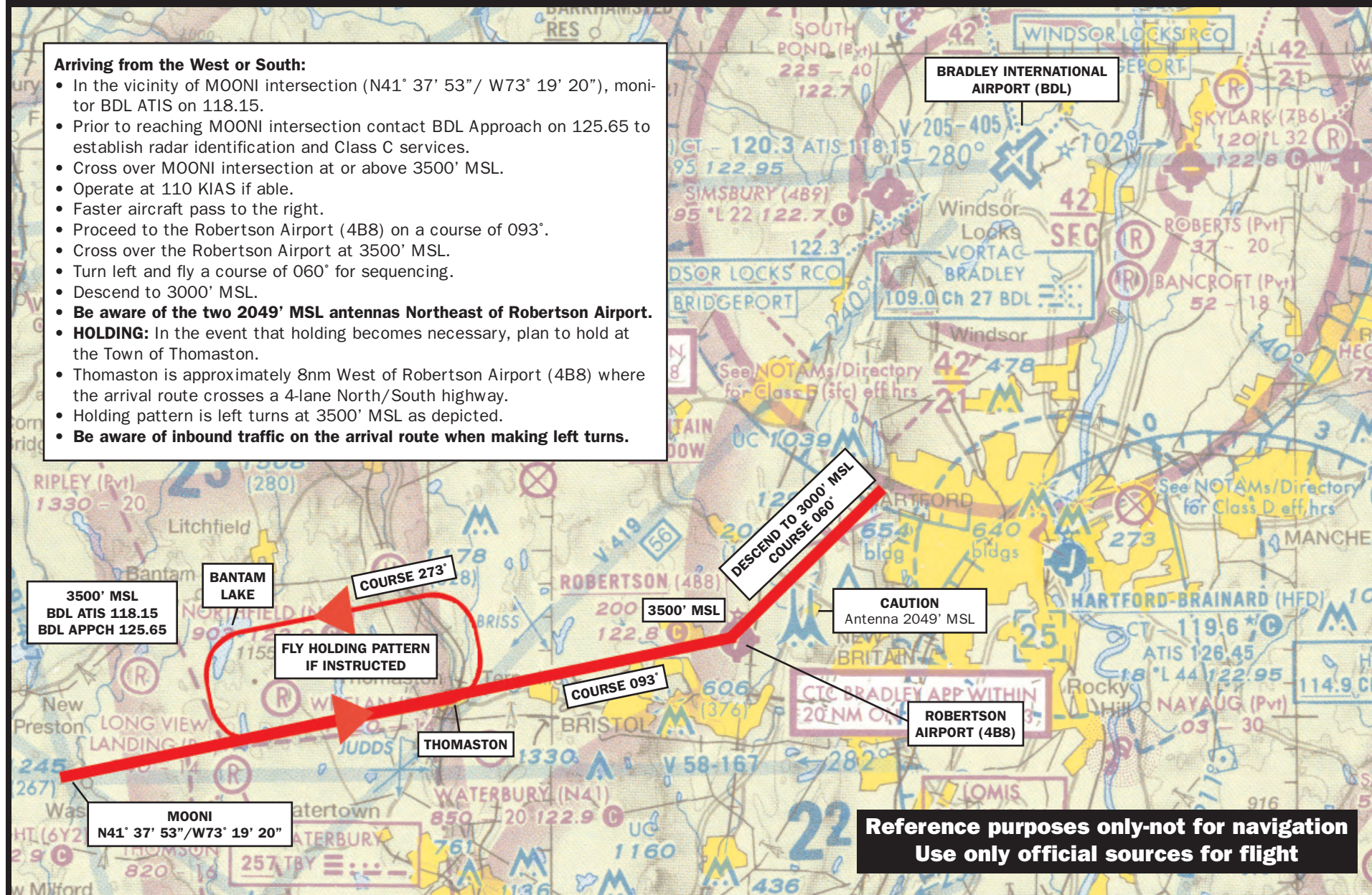
- Prior to reaching MOONI intersection (N41° 37' 53" / W73° 19' 20"), monitor BDL ATIS on 118.15.
- Prior to reaching MOONI intersection, contact BDL Approach on 125.65 to establish radar identification and Class C services.
- Cross over MOONI intersection at or above 3,500 feet MSL.
- Operate at 110 KIAS if able.
- Faster aircraft pass to the right.
- Proceed to the Robertson Airport (4B8) on a course of 093°.
- Cross over the Robertson Airport at 3,500 feet MSL.
- Turn left and fly a course of 060° for sequencing.
- Descend to 3,000 feet MSL.
- **Be aware of the two 2,049 feet MSL antennas northeast of Robertson Airport.**
- **HOLDING:** In the event that holding becomes necessary, plan to hold at the town of Thomaston.
- Thomaston is approximately 8 nm west of Robertson Airport (4B8) where the arrival route crosses a four-lane north/south highway.
- Holding pattern is left turns at 3,500 feet MSL as depicted.
- **Be aware of inbound traffic on the arrival route when making left turns.**

AOPA EXPO 2007

Bradley International (BDL) VFR Arrival Procedures, West or South October 4-6, 2007

Arriving from the West or South:

- In the vicinity of MOONI intersection (N41° 37' 53" / W73° 19' 20"), monitor BDL ATIS on 118.15.
- Prior to reaching MOONI intersection contact BDL Approach on 125.65 to establish radar identification and Class C services.
- Cross over MOONI intersection at or above 3500' MSL.
- Operate at 110 KIAS if able.
- Faster aircraft pass to the right.
- Proceed to the Robertson Airport (4B8) on a course of 093°.
- Cross over the Robertson Airport at 3500' MSL.
- Turn left and fly a course of 060° for sequencing.
- Descend to 3000' MSL.
- **Be aware of the two 2049' MSL antennas Northeast of Robertson Airport.**
- **HOLDING:** In the event that holding becomes necessary, plan to hold at the Town of Thomaston.
- Thomaston is approximately 8nm West of Robertson Airport (4B8) where the arrival route crosses a 4-lane North/South highway.
- Holding pattern is left turns at 3500' MSL as depicted.
- **Be aware of inbound traffic on the arrival route when making left turns.**



Arriving BDL from the east:

- Prior to reaching GRAYM intersection (N42° 06' 04"/ W72° 01' 54"), monitor BDL ATIS on 118.15.
- Prior to reaching GRAYM intersection, contact BDL Approach on 125.65 to establish radar identification and Class C services.
- Cross over GRAYM intersection at 3,000 feet MSL.
- Operate at 110 KIAS if able.
- Faster aircraft pass to the right.
- Proceed on a course of 266° via V419 (BDL R-086) toward BDL for sequencing.
- Descend to 2,500 feet MSL.
- Expect radar vectors for sequencing.
- **HOLDING:** In the event that holding becomes necessary, plan to hold at the Hamilton Reservoir (BDL R-086 25 nm).
- Holding pattern is left turns at 2,500 feet MSL as depicted.
- **Be aware of aircraft approaching from the east at Southbridge Airport (3B0) when making left turns.**

IFR ARRIVALS

Due to heavy arrival traffic for the event and regular commercial traffic, IFR ARRIVALS AND DEPARTURES WILL BE SEVERLY LIMITED. You can expect SIGNIFICANT DELAYS at your departure point or enroute to Bradley International. VFR flight on the designated arrival routes is highly recommended if weather permits.

LANDING/PARKING

Runway 24 Arrivals

Land and hold-short operations (LAHSO) will be in effect. Plan to land on the Runway 24 threshold and turn **left** at the first available exit point, Taxiway H (2,200 feet available). You will be directed to follow the flagmen or follow instructions issued by BDL Ground Control. Reduced arrival separation may be employed for Runway 24 arrivals. Arrivals may also be instructed to land long, touching down at the intersection with Runway 19. In this event, plan to exit the runway with a left turn onto Taxiway K. Landing distance from the Runway 19 intersection to Taxiway K is approximately 2,150 feet. Contact and follow ground control instructions. **UNDER NO CIRCUMSTANCES ARE AIRCRAFT TO CROSS RUNWAY 15/33 DURING LANDING.** You will be taxied to the intersection of Runway 19 and Taxiway C and met by flagmen who will assist you in parking.

Runway 33 Arrivals

Land and hold-short operations (LAHSO) will be in effect. Plan to land long, touching down at or after the first taxiway (Taxiway E) and turn **right** off the runway at Taxiway C and follow BDL Ground Control instructions. Landing distance from Taxiway E to Taxiway C is approximately 2,700 feet. You will be taxied to the intersection of Runway 19 and Taxiway C and met by flagmen who will assist you in parking. Reduced arrival separation may be employed for Runway 33 arrivals. Arrivals may also be instructed to land on the Runway 33 threshold. In this event, plan to turn **right** off the runway at the first available exit point, Taxiway E (**1,550 feet available**). Follow Taxiway E and follow BDL Ground Control instructions. You will be met by flagmen who will assist you in parking. **UNDER NO CIRCUMSTANCES ARE AIRCRAFT TO CROSS RUNWAY 6/24 DURING LANDING.**

Runway 6 Arrivals

Land and hold-short operations (LAHSO) will be in effect. Plan to land beyond the Runway 15/33 intersection and turn **right** at Runway 1/19 or Taxiway H. Follow flagmen direction to parking.

SECURING AIRCRAFT

After shutting down, stay with your aircraft. A van will transport you to the FBO's registration area. Additionally, **pilots are asked to bring their own chocks, tiedowns, and ground anchors.**

BDL TRANSPORTATION

Free shuttle bus transportation will be available to and from the convention center from 12 p.m. to 7 p.m. on Wednesday, 7 a.m. to 7 p.m. Thursday and Friday, and 7 a.m. to 6 p.m. on Saturday. **Pilots should plan on arriving between these hours.**

The FBOs can make taxi arrangements upon your request. Rental cars can also be arranged through the FBOs. Hertz, Avis, and Alamo offer discounts to AOPA members.

AOPA Discount Car Rental Companies:

Alamo Rent-A-Car	1-800/354-2322	AOPA discount ID# 7012328
Avis Rent-A-Car	1-800/331-1600	AOPA discount (AWD) #A451399
Hertz Corporation	1-800/654-2240	AOPA discount CDP# 10232

BDL DEPARTURES

All IFR and turboprop/turbojets: IFR prop aircraft and turboprop/turbojet aircraft, contact Clearance Delivery on 121.75 **PRIOR** to taxi for clearance. Expect routine handling procedures.

Runway 24 and Runway 33 Departures

VFR prop aircraft: Monitor ATIS on 118.15, call Clearance Delivery on 121.75 with your direction of flight and requested altitude. Taxi to Blue Area, Spot 1 or Yellow Area, Spot 4, depending on your parking area, before calling Ground Control. If parked in the Tac Air South grass parking (Green Area, Spot 3), contact ground control upon reaching pavement. Depending on your direction of flight, you will be taxied to either Runway 33 for westbound or northbound departures or Runway 24 for southbound or eastbound departures. If Runway 1 is available and its use is operationally advantageous, expect to depart Runway 1 for **northbound, southbound, and eastbound destinations only.**

Runway 6 and Runway 33 Departures

VFR prop aircraft: Monitor ATIS on 118.15, call Clearance Delivery on 121.75 with your direction of flight and requested altitude. Taxi to Blue area Spot 1, or Yellow Area Spot 4, depending on your parking area, before calling Ground Control. If parked in the Tac Air South grass parking (Green Area, Spot 3), contact ground control upon reaching pavement. Depending on your direction of flight, you will be taxied to either Runway 33 for westbound or northbound departures or Runway 6 at Taxiway H intersection departure (2,450 feet available) for southbound or eastbound departures. If Runway 1 is available and its use is operationally advantageous, expect to depart Runway 1 for **northbound, southbound, and eastbound destinations only.**

BDL VFR DEPARTURE PROCEDURES

CAUTION—HIGH-VOLUME DEPARTURE TRAFFIC FROM HFD

Departing Runway 33—Expect full length or intersection departures from Taxiway E (5,250 feet available)

Single-engine prop aircraft—Reduced departure separation rules may be employed. Fly runway heading, maintain at or below 2,000 feet MSL within Class C airspace unless directed otherwise by ATC. Remain at or below 2,000 feet MSL until clear of Class C airspace then proceed on course. Contact BDL Departure on 125.35 for traffic advisories if desired. Traffic advisories will be afforded on a workload-permitting basis. Be aware of rising terrain.

Twin-engine prop aircraft—Reduced departure separation rules may be employed. Fly heading 360° for northbound destinations or fly heading 300° for westbound destinations, maintain 2,000 feet MSL within Class C airspace. Remain at or below 2,000 feet until clear of Class C airspace then proceed on course. Contact BDL Departure on 125.35 for traffic advisories if desired. Traffic advisories will be afforded on a workload-permitting basis. Be aware of rising terrain. Be aware of the BAF and CEF Class D airspace north of BDL.

Departing Runway 24—Expect full length or intersection departures from Taxiway H (7,000 feet available) or Runway 19 (6,300 feet available) (if Runway 1/19 is closed)

Single-engine prop aircraft—Reduced departure separation rules may be employed. Fly heading 210°, maintain at or below 2,000 feet MSL within Class C airspace unless directed otherwise by ATC. Remain at or below 2,000 feet MSL until clear of Class C airspace then proceed on course. Contact BDL Departure on 123.95 for traffic advisories if desired. Traffic advisories will be afforded on a workload-permitting basis. Be aware of heavy traffic volume in the HFD area and be aware of the HFD Class D airspace.

Twin-engine prop aircraft—Reduced departure separation rules may be employed. Fly runway heading, maintain 2,000 feet MSL within Class C airspace. Remain at or below 2,000 feet MSL until clear of Class C airspace then proceed on course. Contact BDL Departure on 123.95 for traffic advisories if desired. Traffic advisories will be afforded on a workload-permitting basis. Be aware of rising terrain.

Departing Runway 6—Expect intersection departures from Taxiway H (2,450 feet available) or Runway 19 (3,150 feet available)(if Runway 1/19 is closed)

Single-engine prop aircraft—Reduced departure separation rules may be employed. Fly heading 095° to the Connecticut River, maintain at or below 2,000 feet within Class C airspace, then proceed on course for **northbound, southbound, and eastbound destinations only**. Remain at or below 2,000 feet MSL until clear of Class C airspace. Contact BDL Departure on 127.8 for traffic advisories if desired. Traffic advisories will be afforded on a workload-permitting basis. Be aware of heavy traffic volume in the HFD area, and be aware of the HFD Class D airspace.

(Twin-engine prop aircraft)—Reduced departure separation rules may be employed. Fly runway heading to the Connecticut River; maintain 2,000 feet MSL within Class C airspace then proceed on course. **Do not reverse course back toward BDL or Class C airspace.** Remain at or below 2,000 feet MSL until clear of Class C airspace. Contact BDL Departure on 125.35 for traffic advisories if desired. Traffic advisories will be afforded on a workload-permitting basis. Be aware of rising terrain.

Departing Runway 1—Expect full-length or intersection departures from Taxiway F (2,850 feet available) (If available)

(Single-engine prop aircraft)—Reduced departure separation rules may be employed. Fly heading 030°, maintain at or below 2,000 feet MSL within Class C airspace, then proceed on course for **westbound, northbound, and eastbound destinations only.** Remain at or below 2,000 feet MSL until clear of Class C airspace. Contact BDL Departure on 125.35 for traffic advisories if desired. Traffic advisories will be afforded on a workload-permitting basis. Be aware of rising terrain. Be aware of the BAF and CEF Class D airspace north of BDL.

(Twin-engine prop aircraft)—Reduced departure separation rules may be employed. Fly runway heading, maintain 2,000 feet MSL within Class C airspace. Remain at or below 2,000 feet MSL until clear of Class C airspace, then proceed on course for **westbound, northbound, and eastbound destinations only.** Contact BDL Departure on 125.35 for traffic advisories if desired. Traffic advisories will be afforded on a workload-permitting basis. Be aware of rising terrain. Be aware of the BAF and CEF Class D airspace north of BDL.

All VFR turboprop, turbojet, or other high-performance departing aircraft, expect normal departure procedures. Fly assigned heading and altitude.

OTHER AVAILABLE AIRPORTS

There are several GA public-use airports within 30 nm of Hartford that Expo attendees may elect to use. **If you use an airport other than Hartford Brainard (HFD) or Bradley International (BDL), please be advised that AOPA-managed infrastructure and services, including ground transportation, are not provided.** Two of these area airports, Windham and Simsbury, welcome AOPA Expo attendees and will have staff and resources to assist you.

WINDHAM AIRPORT (KIJD) has made arrangements to provide aircraft parking and services to AOPA members. Windham is about 35 minutes' drive time from the convention center in Hartford. Questions? Contact Windham Aviation at 860/456/4156 or Line Services manager John Wackerman at 860/933-4478.

Arrivals and departures

- Open for AOPA arrivals any day from 8 a.m. to 8 p.m.
- Unicom is 122.97, which will be manned during the above days and hours.
- **Bring your own tiedown ropes and ground anchors.**
- You may depart at any time, day or night.

Runways and lighting

09/27 4,278 x 100 feet, 36/18 2,797 x 75 feet. Note: Runway 36 has a 799-foot displaced threshold.

- Pilot-controlled runway lighting system on Runway 09/27 only; activate on 122.97.

Fuel

Full serve using cash or any major credit card (100LL, \$4.39; Jet A, \$3.89).

Ground transportation

Ground transportation to the convention center and downtown Hartford will be available by rental car only with discount rates for AOPA members. Enterprise Car Rentals offers a 10-percent discount for AOPA members. Call 860/423-1822 and mention discount ID 48K3113, or go to <http://www.enterprise.com/> and use pin “aop.”

Fees

Parking is \$20 for singles and \$30 for twins, payable by cash or credit card. This fee will cover your entire stay through October 7.

SIMSBURY AIRPORT (4B9) has made arrangements to provide aircraft parking and services to AOPA members. Simsbury is about 30 minutes’ drive time from the convention center in Hartford. Questions? Contact Airport Manager Bill Thomas at 860/693-4550.

Arrivals and departures

- Open for AOPA arrivals ONLY on Wednesday and Thursday, October 3 and 4. AOPA Expo attendees can stay through Sunday, October 7.
- Plan to arrive between 8 a.m. and 6 p.m. on the above days.
- Unicom is 122.7, which will be manned during the above days and hours.
- **Bring your own tiedown ropes and ground anchors.**
- In the event that parking becomes full, you will be notified of such when you call Unicom on 122.7 inbound.
- You may depart at any time, day or night.

Runway lighting

Simsbury has a pilot-controlled runway lighting system; activate on 122.7.

Fuel

Self-serve 100LL 24/7 using any major credit card.

Ground transportation

- Ground transportation to the convention center and downtown Hartford will be available by rental car, with discount rates for AOPA members, or by taxi. Taxi service to/from Simsbury Airport to downtown Hartford is available from Valley

Cab Co. Call 860/673-4250 to arrange for a ride to the convention. Cab cost is approximately \$30.

- Enterprise Car Rentals offers a 10-percent discount for AOPA members. Call 860/658-5989 and mention discount ID 48K3113, or go to www.enterprise.com and use pin “aop.”

Parking fees

The parking fee is \$25, payable by cash or by personal check. The parking fee covers your entire stay, up through October 7.

GA public-use airports within 30 nm of Hartford:

Simsbury (4B9)

Windham (IJD)

Robertson (4B8)

Skylark (7B6)

Ellington (7B9)

Meriden Merckham (MMK)

Airport and FBO contact information for these airports can be found in [AOPA's Airport Directory Online](#).