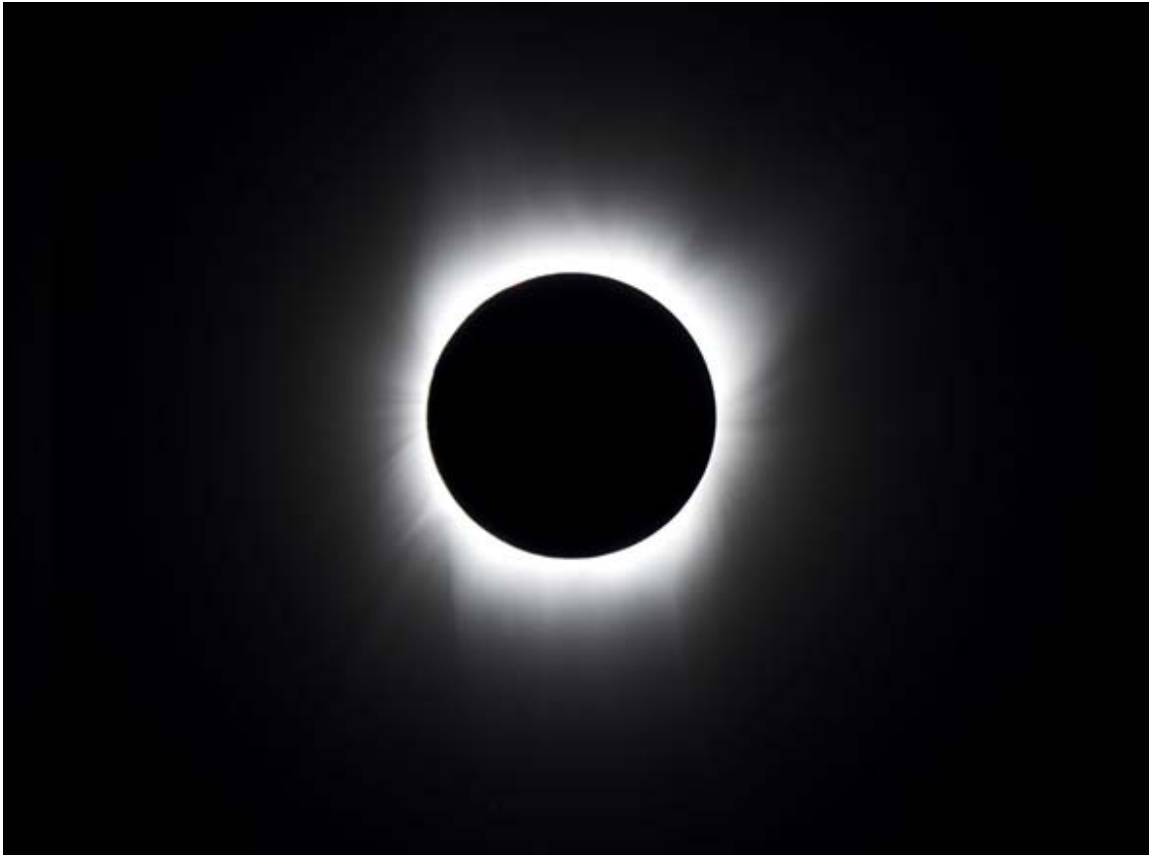


**Oregon Solarfest
NOTAM**



**Madras, OR
August 18-21, 2017**

BACKGROUND

The purpose of this Notice is to inform pilots of special air traffic procedures that will be implemented during the Oregon Solarfest, August 18, 2017–August 21, 2017 in the vicinity of Madras Municipal Airport (S33), Madras, OR. During this event a temporary Non–Federal Contract Tower (NFCT) will provide air traffic control services at the airport to enhance safety due to an expected increase in local air traffic operations. Pilots should review and utilize the procedures contained in this Notice during the effective times.

CONTROL TOWER HOURS

The fly–in procedures outlined in this NOTAM will be in effect only during the times the control tower is open. Outside the below times, consult the FAA Chart Supplement for normal airport operations. Please check NOTAMS before arrival for the latest changes and or procedures.

Friday, August 18, 2017	4:00 PM to 7:00 PM local time
Saturday, August 19, 2017	9:00 AM to 7:00 PM local time
Sunday, August 20, 2017	9:00 AM to 7:00 PM local time
Monday, August 21, 2017	7:00 AM to 5:00 PM local time

FREQUENCY AND CONTACT GUIDE

Madras NFCT	TBA via NOTAM D
Seattle ARTCC	TBA via NOTAM D
Madras Unicom & CTAF	122.8
Madras AWOS	132.425
	Tel. 541–475–0494
Flight Service	1(800)992–7433
Reservations	541–475–4899, 541–475–6947, airport@ci.madras.or.us or bergairllc@yahoo.com

COMMUNICATING WITH ATC

Air traffic control services at Madras NFCT are provided by Aegis ATC. The tower will operate from a modified trailer outfitted with two–way radio communications and 180° windows. Because the tower does not have a clear 360° view, it is important for pilots to fly inbound via the standard routes and be vigilant in searching for other aircraft.

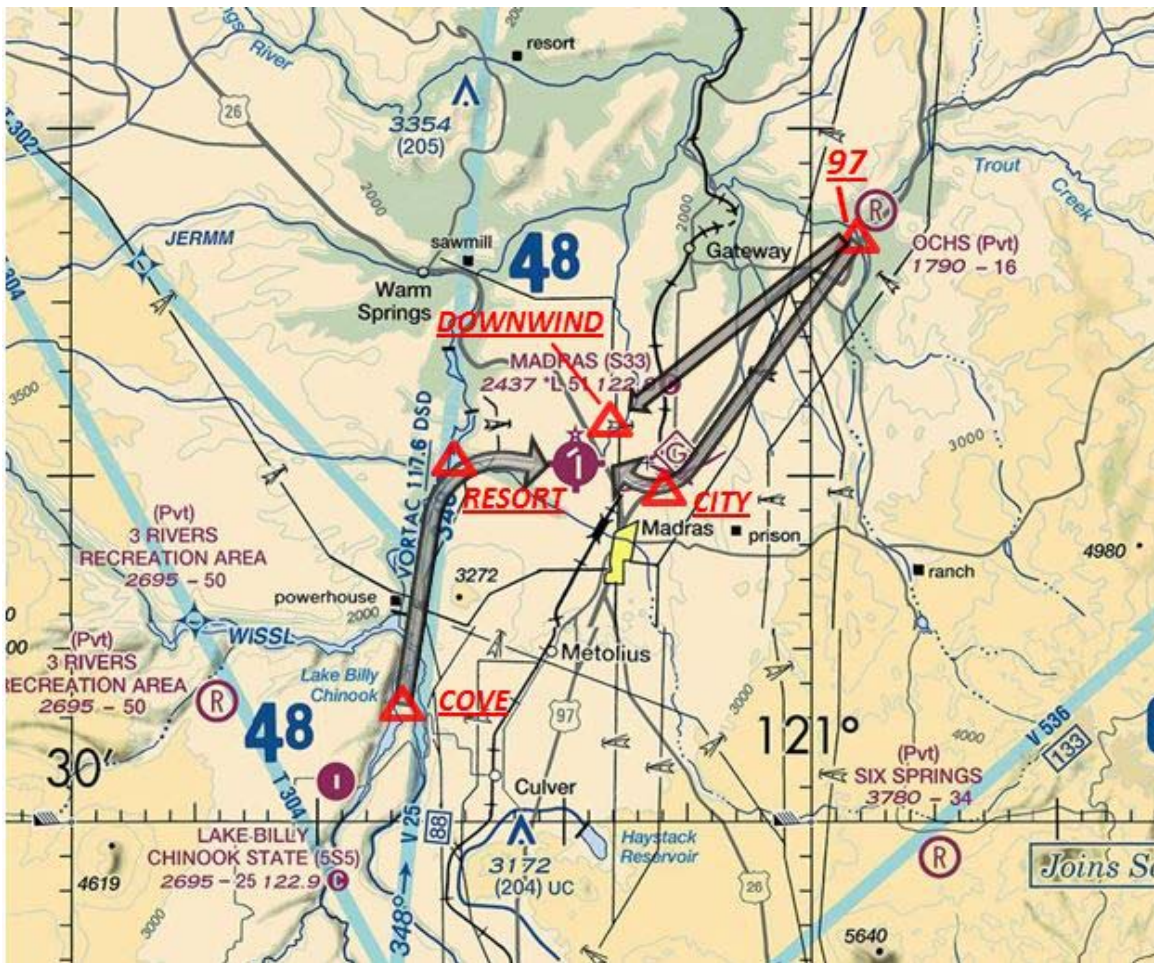
VFR ROUTE PLANNING TO ENTRY POINTS

General Planning:

- 30NM from S33 turn on landing lights and squawk beacon code 0300 or as assigned by ATC.
- Monitor Madras NFCT 15–20 miles from the airport for landing information.
- Report in to the tower over or nearing published reporting points.

VFR sequencing inbound to Madras Airport begins over The Cove Palisades State Park , 8.5 NM SW of Madras Airport and the intersection of HWY 97 and Old HWY 97, 10.4 NM NW of the Madras Airport.

VFR APPROACHING MADRAS



GENERAL ARRIVAL PROCEDURES TO MADRAS

Prior permission is required to land at Madras Airport August 18–21, 2017. You must have a reservation on file with the airport before you are allowed to land. Due to runway configuration and parking areas, arrival times are metered to ensure efficiency and safety of flight. Reservations can be made by contacting the following: 541-475-6947, 541-475-4899 or airport@ci.madras.or.us.

All arrivals must fly inbound to Madras via the routes depicted in the following pages for the runway in use unless instructed otherwise by ATC.

If VFR holding becomes necessary due to traffic volume or an unanticipated runway closure, ATC will provide holding instructions over reporting points.

Be vigilant of heavy traffic in the vicinity and look for another aircraft to follow.

Reporting Points: Watch for and sequence your aircraft with other observed traffic. Maintain single file. Aircraft maintain 90 KTS and 3700 MSL over reporting points COVE and 97. If unable, maintain 130 KTS and 4200 MSL over reporting points COVE and 97. Descent from these altitudes to pattern altitude may begin

after being told to proceed to the next reporting point. Airport pattern altitude for aircraft at 90 KTS is 3200. Airport pattern altitude for aircraft at 130 KTS is 3700.

Monitor Madras NFCT as you approach COVE or 97 to obtain runway direction and inbound clearance. Announce yourself to Madras NFCT at COVE or 97. Inbound report RESORT, CITY or entering downwind RWY 16 or 34.

All Aircraft Report to Tower with 1 Minute Weather

Madras will have downwinds on both sides of the airport; prepare to be sequenced in the pattern by Madras NFCT.

Notify ATC if you are unable to maintain at least 90 KTS.

VFR RUNWAY 34 ARRIVAL



Cove entry: From The Cove Palisades State Park, fly single file direct to Lake Simtustus Resort then turn inbound to Madras Airport and enter a left downwind for Runway 34.

97 entry: From the intersection of HWY 97 and Old HWY 97 fly single file direct to the Madras Airport and enter a right downwind for Runway 34.

VFR RUNWAY 16 ARRIVAL



Cove entry: From The Cove Palisades State Park fly single file direct to Lake Simtustus Resort then turn inbound to Madras Airport and enter a right downwind for Runway 16.

97 entry: From the intersection of HWY 97 and Old HWY 97 fly single file direct to the town of Madras then direct the Madras Airport and enter a left downwind for Runway 16.

IFR ARRIVALS

Expect vectors for the visual approach. If requesting an instrument approach, advise Seattle Center.

Provide IFR cancellation information to Seattle Center. If you have not canceled prior to landing, advise ground control.

Practice approaches will not be permitted.

No touch-and-go or closed traffic operations will be allowed during Solarfest, unless authorized by Madras Tower.

VFR DEPARTURES

Contact tower as you approach the runway. On departure, fly straight out until reaching 4200 MSL then continue climbing to cruise altitude and proceed on course.

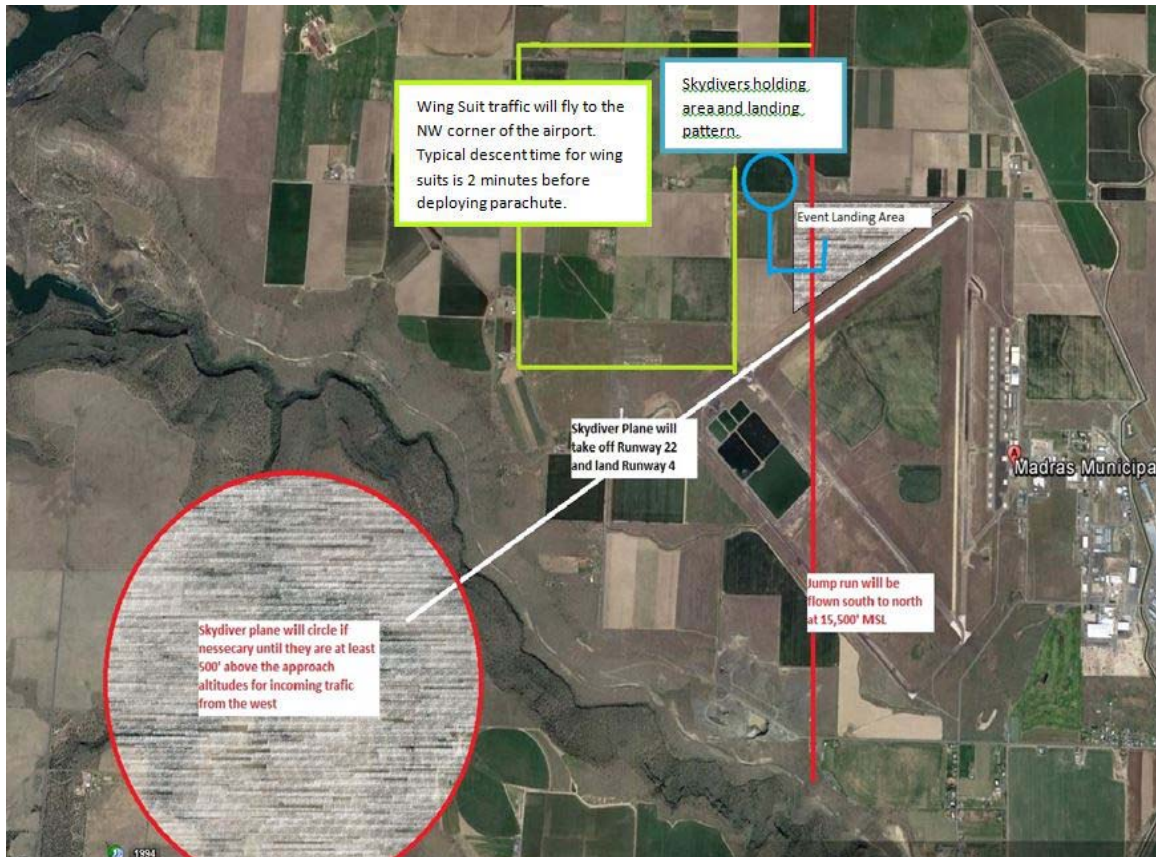
IFR DEPARTURES

File your flight plan at least one hour prior to the proposed departure time. Ensure you have received an IFR clearance from Ground Control prior to taxiing for departure. Check NOTAMS for the most up to date IFR departure procedures.

Advise the tower controller that you are IFR and that you are ready for departure. If you are awaiting release, attempt to taxi into an area that allows VFR aircraft to pass you for departure.

Skydiving Operations

Skydiving and Wing–Suite operations will be conducted at Madras airport during Solarfest. Jump operations will take place approximately every half hour. Jumpers will descend from 15,500 feet MSL. Skydivers will coordinate with ATC when it is safe to jump and all aircraft will be notified of the operations. Please check NOTAMS for the latest up to date information on skydiving operations. Avoid flying near depicted jump operations. The latest skydiving information can be found by checking NOTAMS or contacting info@skydiveawesome.com.



After the Eclipse.

Expect to depart Runway 34. Arrivals will not be permitted starting at 1100 hours. Expect to be slotted with a departure time just like you came in.

Additional Information and Resources

Aegis ATC can be reached at AEGISATCLLC@gmail.com for information regarding their operations.