

APP CRS	Rwy Idg	5000
285°	TDZE	2191
	Apt Elev	2205

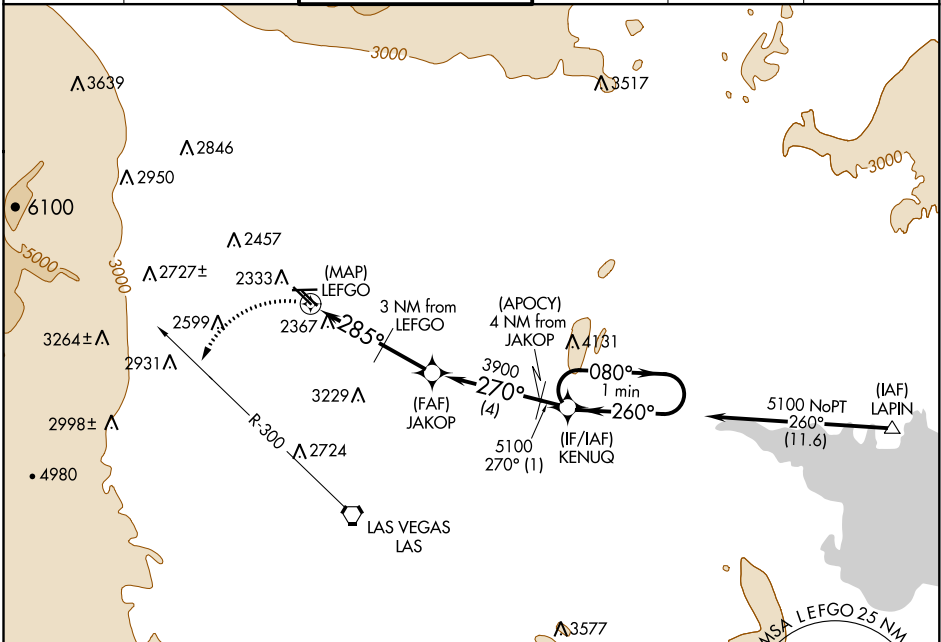
GPS RWY 30L

NORTH LAS VEGAS (VGT)

NA When local altimeter setting not received, use McCarran Intl altimeter setting and increase all MDA 40 feet and S-30L Cats C/D visibility ¼ mile. Circling to Rwy 12L-30R NA.

MISSED APPROACH: Climbing left turn to 4000 via heading 220° and LAS R-300 to LAS VORTAC.

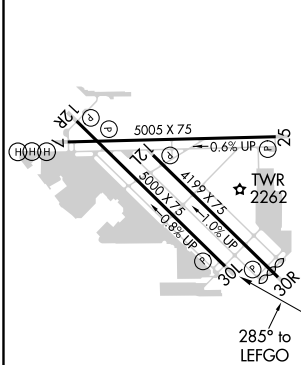
ATIS 118.05	LAS VEGAS APP CON 119.4 360.85	NORTH LAS VEGAS TOWER * 125.7 (CTAF) 360.75	GND CON 121.7	CLNC DEL 124.0	UNICOM 122.95
-----------------------	--	--	-------------------------	--------------------------	-------------------------



SW-4, 07 NOV 2019 to 05 DEC 2019

SW-4, 07 NOV 2019 to 05 DEC 2019

ELEV 2205	D	TDZE 2191
-----------	----------	-----------



	4000	LAS R-300	LAS	KENUQ	One Minute Holding Pattern
	hdg 220°			(APOCY) 4 NM from JAKOP	
			JAKOP		
		3 NM from LEFGO			
			LEFGO		
				3900	
				270°	
				5100	
				270°	
				260°	
				5100	
				080°	
				260°	
				3200	
				3 NM	
				2 NM	
				4 NM	
				1 NM	

CATEGORY	A	B	C	D
S-30L	2680-1	489 (500-1)	2680-1¼ 489 (500-1¼)	2680-1½ 489 (500-1½)
CIRCLING	2720-1	515 (600-1)	2720-1½ 515 (600-1½)	2760-2 555 (600-2)

REIL all Rwy 1
MIRL Rwy 7-25 and 12L-30R
MIRL Rwy 12R-30L