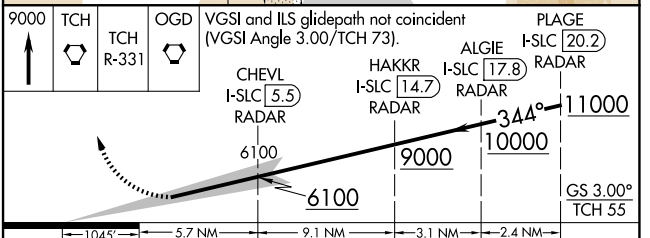
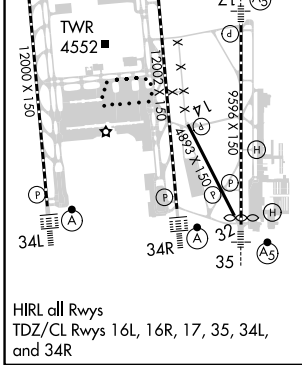
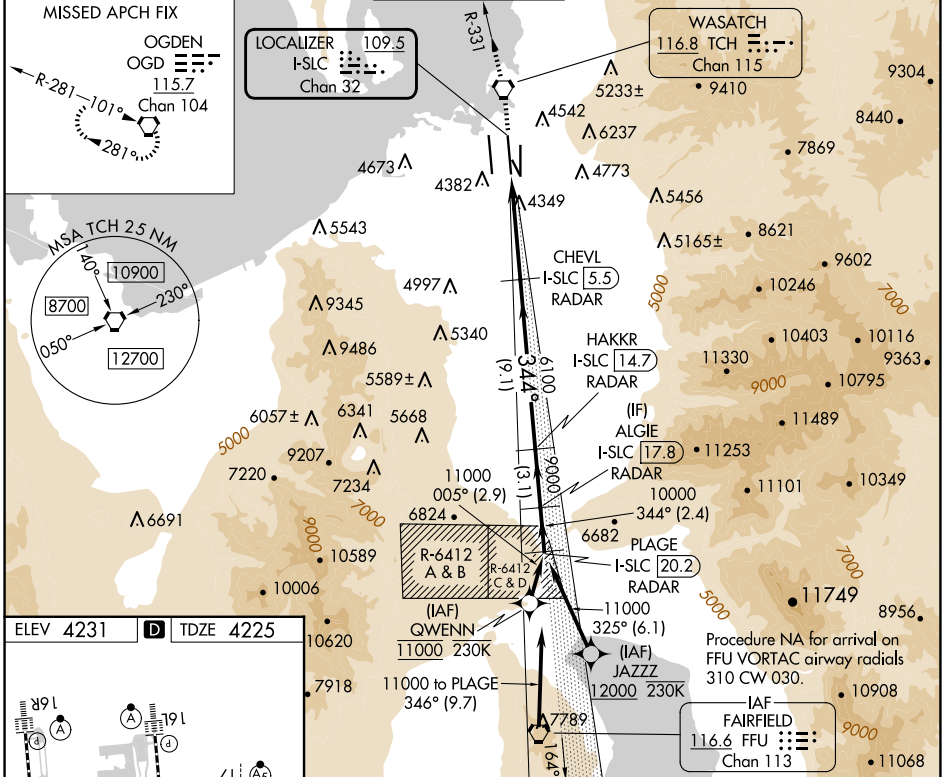


LOC/DME I-SLC 109.5 Chan 32	APP CRS 344°	Rwy Idg TDZE Apt Elev	12002 4225 4231
---	------------------------	-----------------------------	--

ILS RWY 34R (SA CAT I)

SALT LAKE CITY INTL (SLC)

RNP APCH - GPS. From QWENN or JAZZZ.		ALSF-2		MISSED APPROACH: Climb to 9000 direct TCH VORTAC and on TCH VORTAC R-331 to OGD VORTAC and hold.	
D-ATIS 124.75 125.625		SALT LAKE CITY APP CON 125.7 284.6		SALT LAKE CITY TOWER 119.05 257.8	
DME or RADAR required.		GND CON 123.775 348.6		CLNC DEL 127.3 379.975	
Simultaneous approach authorized. Requires specific OPSPEC, MSPEC, or LOA approval.		CPDLC			



CATEGORY	A	B	C	D
S-ILS 34R	RA 149/14 150 DA 4375			
SA CATEGORY I ILS - SPECIAL AIRCREW & AIRCRAFT CERTIFICATION REQUIRED				

SW-4, 15 MAY 2025 to 12 JUN 2025

SW-4, 15 MAY 2025 to 12 JUN 2025