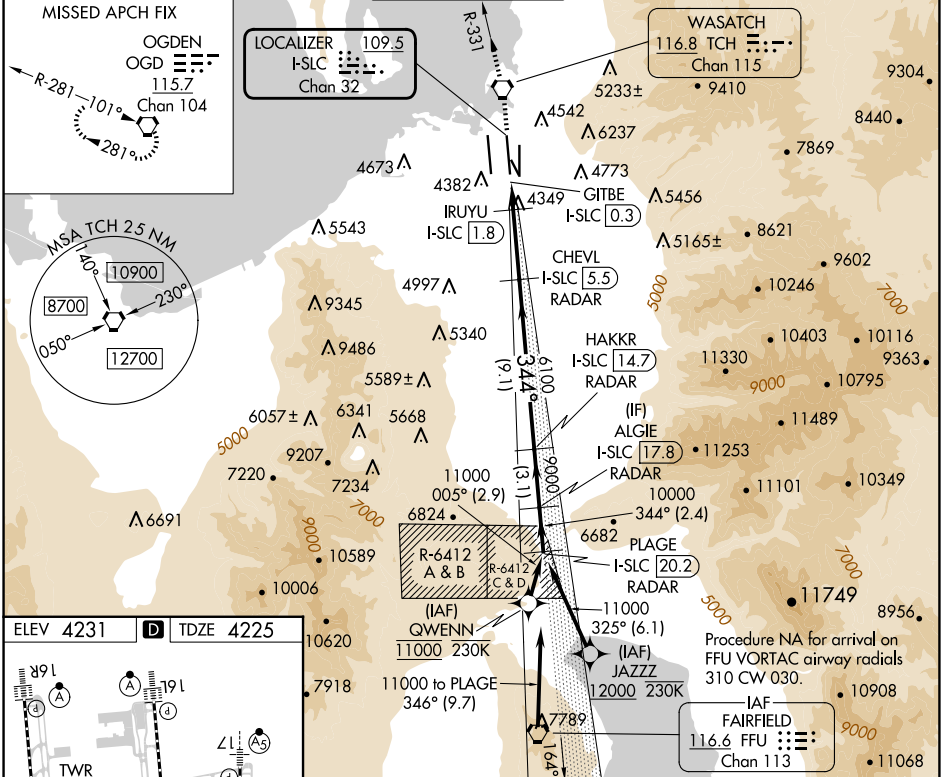


| | | | |
|---------------|---------|----------|-------|
| LOC/DME I-SLC | APP CRS | Rwy Idg | 12002 |
| 109.5 | 344° | TDZE | 4225 |
| Chan 32 | | Apt Elev | 4231 |

ILS or LOC RWY 34R

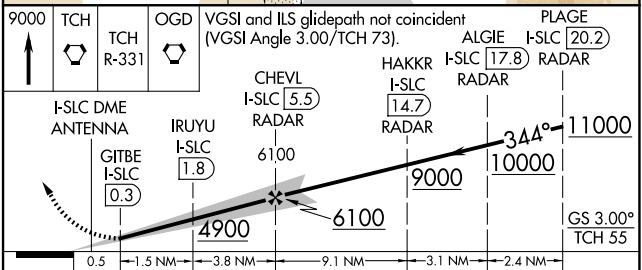
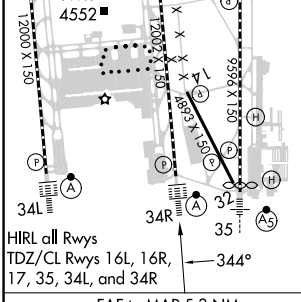
SALT LAKE CITY INTL (SLC)

| | | | | | |
|---|------------------------|----------------------|--|---------------|-------|
| RNP APCH - GPS. From QWENN or JAZZZ. | | ALSF-2 | MISSED APPROACH: Climb to 9000 direct TCH VORTAC and on TCH VORTAC R-331 to OGD VORTAC and hold. | | |
| DME required for LOC only. DME or RADAR required. | | | | | |
| <p>Simultaneous approach authorized. For inop ALS, increase S-LOC 34R Cat C/D visibility to RVR 5500.</p> | | | | | |
| D-ATIS | SALT LAKE CITY APP CON | SALT LAKE CITY TOWER | GND CON | CLNC DEL | CPDLC |
| 124.75 125.625 | 125.7 284.6 | 119.05 257.8 | 123.775 348.6 | 127.3 379.975 | |



SW-4, 15 MAY 2025 to 12 JUN 2025

SW-4, 15 MAY 2025 to 12 JUN 2025



| | | | | |
|-----------|---------------------|-------------|---------|-------------|
| CATEGORY | A | B | C | D |
| S-ILS 34R | 4425/18 200 (200-½) | | | |
| S-LOC 34R | 4600/24 | 375 (400-½) | 4600/35 | 375 (400-⅔) |