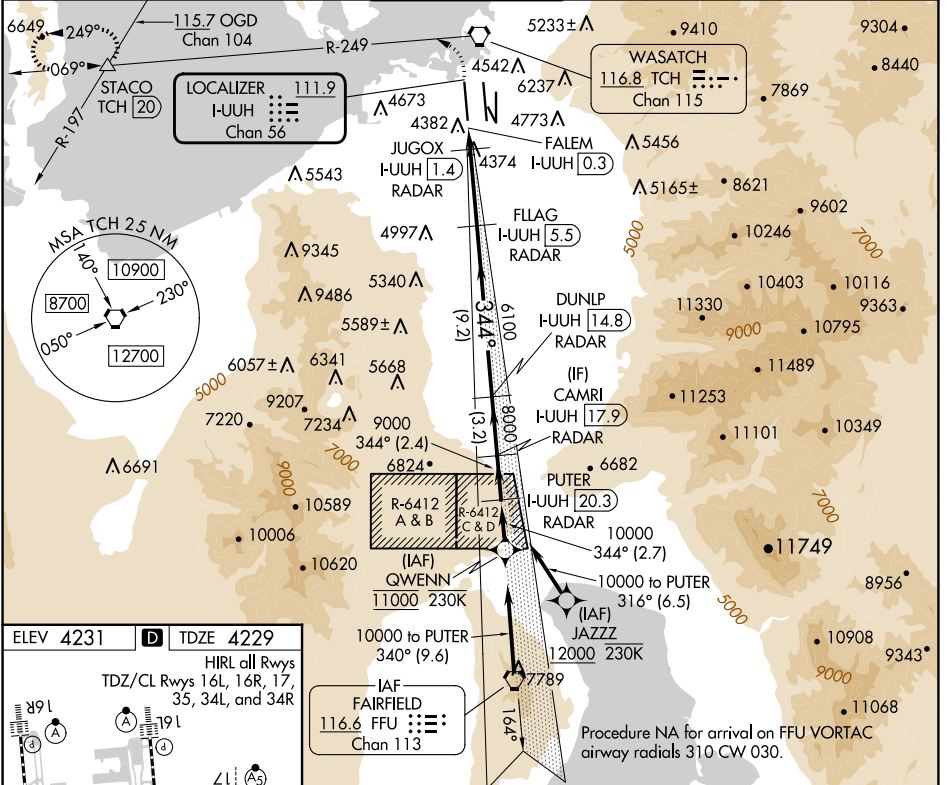


LOC/DME I-UUH 111.9 Chan 56	APP CRS 344°	Rwy Idg TDZE 4229 Apt Elev 4231
------------------------------------------	------------------------	-----------------------------------------------------------

ILS or LOC RWY 34L

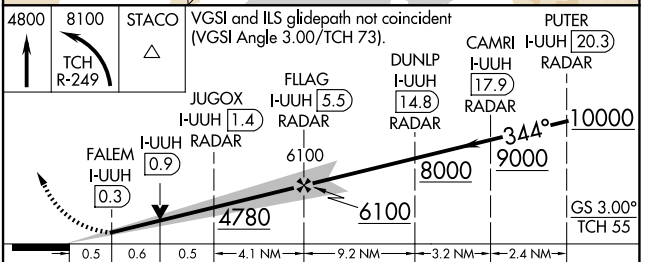
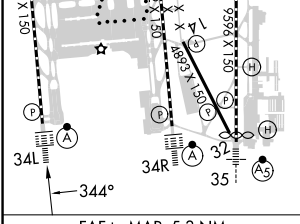
SALT LAKE CITY INTL (SLC)

RNP APCH - GPS. From QWENN or JAZZZ.		ALSIF-2		MISSED APPROACH: Climb to 4800 then climbing left turn to 8100 on TCH VORTAC R-249 to STACO INT/TCH 20 DME and hold.	
D-ATIS 124.75 125.625		SALT LAKE CITY APP CON 125.7 284.6		SALT LAKE CITY TOWER 132.65 336.4	
DME or RADAR required.		GND CON 123.775 348.6		CLNC DEL 127.3 379.975	
Simultaneous approach authorized. For inop ALS, increase S-LOC 34L Cat C/D visibility to RVR 6000.		CPDLC			



ELEV 4231	D	TDZE 4229
-----------	----------	-----------

HIRL all Rwys TDZ/CL Rwys 16L, 16R, 17, 35, 34L, and 34R



FAF to MAP 5.3 NM					
Knots	60	90	120	150	180
Min:Sec	5:18	3:32	2:39	2:07	1:46

CATEGORY	A		B		C		D	
S-ILS 34L	4429/18				200 (200-1/2)			
S-LOC 34L	4640/24		411 (500-1/2)		4640/40		411 (500-3/4)	

SW-4, 15 MAY 2025 to 12 JUN 2025

SW-4, 15 MAY 2025 to 12 JUN 2025