

WAAS CH <b>45604</b> <b>W15A</b>	APP CRS <b>156°</b>	Rwy Idg <b>5950</b> TDZE <b>4264</b> Apt Elev <b>4317</b>
--	------------------------	---

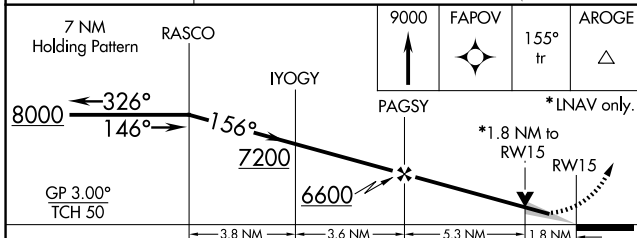
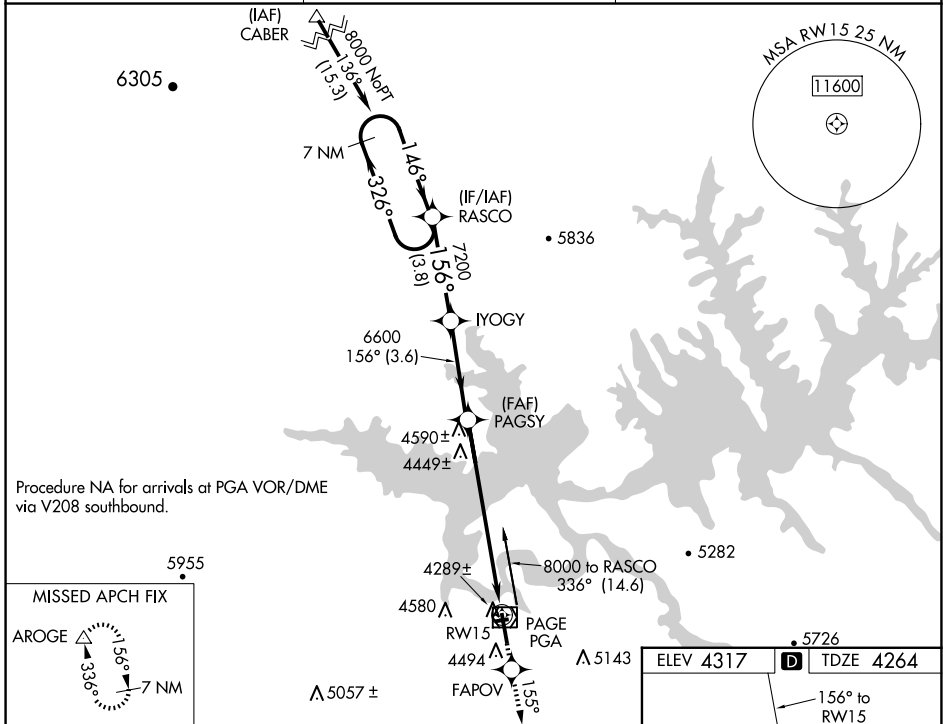
# RNAV (GPS) RWY 15

PAGE MUNI (PGA)

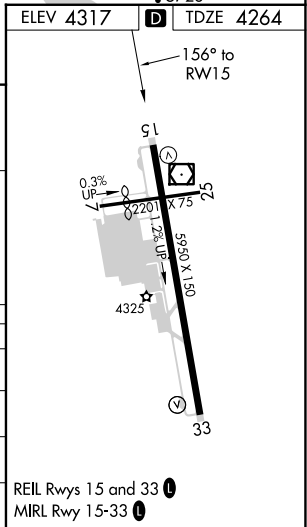
**▼** For uncompensated Baro-VNAV systems, LNAV/VNAV NA below -23°C (-9°F) or above 41°C (105°F).  
DME/DME RNP-0.3 NA. Circling NA to Rwy 7-25

MISSED APPROACH: Climb to 9000 direct FAPOV and via 155° track to AROGE and hold, continue climb-in-hold to 9000.

ASOS <b>120.625</b>	DENVER CENTER <b>127.55 256.875</b>	UNICOM <b>122.8 (CTAF) 0</b>
------------------------	--	---------------------------------



CATEGORY	A	B	C	D
LPV DA		4599-1¼	335 (300-1¼)	
LNAV/VNAV DA		4670-1½	406 (400-1½)	
LNAV MDA	4860-1	596 (600-1)	4860-1½ 596 (600-1½)	4860-1¾ 596 (600-1¾)
CIRCLING	4860-1 543 (600-1)	4880-1 563 (600-1)	5080-2¼ 763 (800-2¼)	5360-3 1043 (1100-3)



SW-4, 15 MAY 2025 to 12 JUN 2025

SW-4, 15 MAY 2025 to 12 JUN 2025