

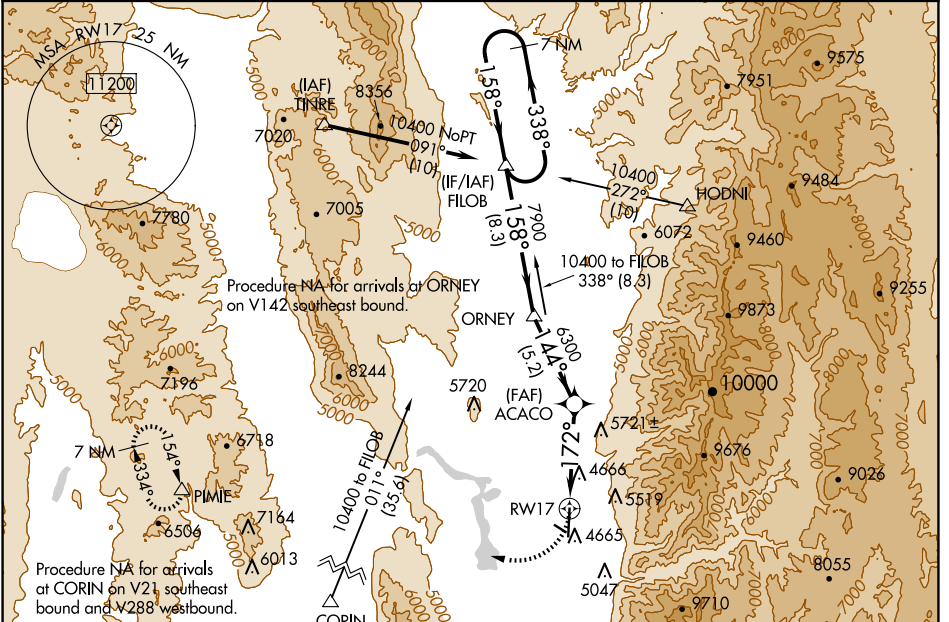
APP CRS	Rwy Idg	9020
172°	TDZE	4457
	Apt Elev	4457

RNAV (GPS) RWY 17

LOGAN-CACHE (LGU)

 	DME/DME RNP-0.3 NA. Circling NA east of Rwy 17-35. Night Landing: Rwy 10-28 NA. Inop table does not apply to LNAV Cats C/D. *MISSED APPROACH requires minimum climb of 310 feet per NM to 7700.	MALSR 	MISSED APPROACH: Climbing right turn to 10000 direct PIMIE and hold, continue climb-in-hold to 10000.
--------------	--	-----------	--

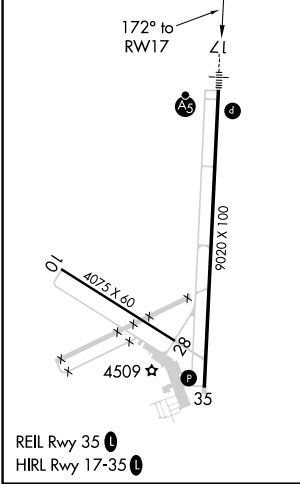
ASOS 135.275	SALT LAKE CENTER 127.7 354.125	UNICOM 122.8 (CTAF)
------------------------	--	-------------------------------



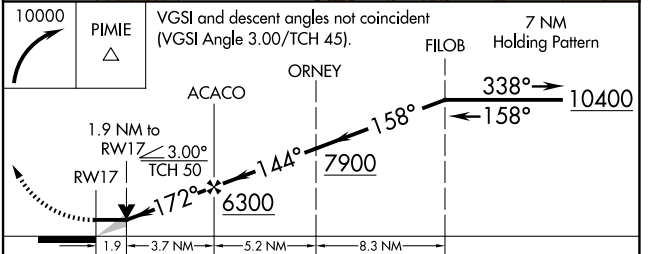
SW-4, 15 MAY 2025 to 12 JUN 2025

SW-4, 15 MAY 2025 to 12 JUN 2025

ELEV	4457	TDZE	4457
------	-------------	------	-------------



LOGAN, UTAH
Amdt 2 31MAR16



CATEGORY	A	B	C	D
*LNAV MDA	5100-½	643 (700-½)	5100-1⅓	643 (700-1⅓)
LNAV MDA	5800-¾ 1343 (1400-¾)	5800-1 1343 (1400-1)	5800-3 1343 (1400-3)	1343 (1400-3)
C CIRCLING	5800-1¼ 1343 (1400-1¼)	5800-1½ 1343 (1400-1½)	5800-3	1343 (1400-3)