

WAAS CH 62911 W30A	APP CRS 303°	Rwy Idg 10201 TDZE 1380 Apt Elev 1384
--	------------------------	--

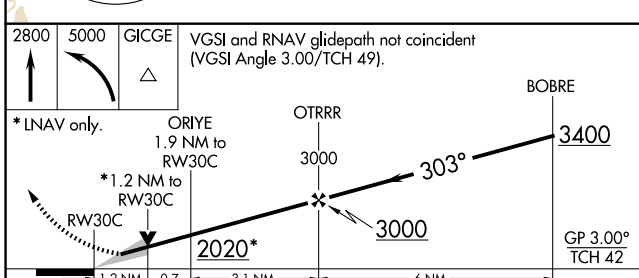
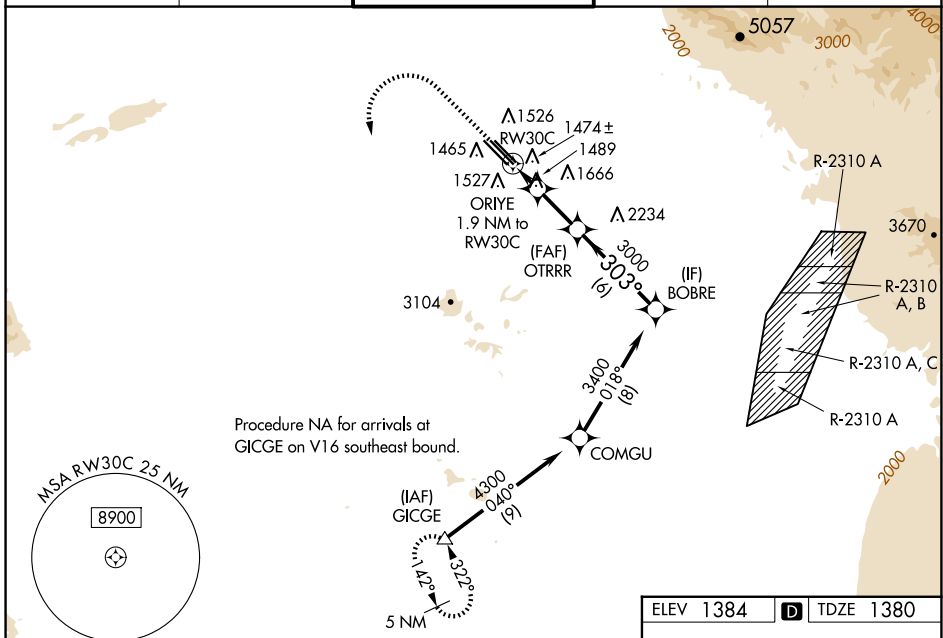
RNAV (GPS) Y RWY 30C

MESA GATEWAY (IWA)

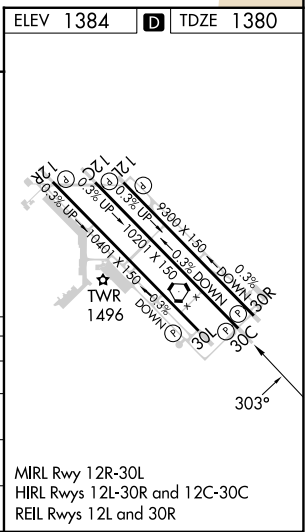
⚠ For uncompensated Baro-VNAV systems, LNAV/VNAV NA below -2°C (29°F) or above 35°C (95°F). DME/DME RNP-0.3 NA. When local altimeter setting not received, use Phoenix Sky Harbor Intl altimeter setting and increase LPV DA to 1660 feet, LNAV/VNAV DA to 1710 feet and all MDA 80 feet; increase LPV all Cats visibility 1/8 SM, increase LNAV/VNAV all Cats, LNAV Cats C, D and E, and Circling Cats D, E visibility 1/4 SM. VDP and Baro-VNAV NA with Phoenix Sky Harbor Intl altimeter setting.

MISSED APPROACH:
Climb to 2800 then climbing left turn to 5000 direct GICGE and hold.

ATIS 133.5 270.275	PHOENIX APP CON 124.9 353.8	GATEWAY TOWER* 120.6 (CTAF) 289.4	GND CON 128.25 275.8	CLNC DEL 135.05
------------------------------	---------------------------------------	---	--------------------------------	---------------------------



ELEV 1384	TDZE 1380				
2800	5000	GICGE	VGSI and RNAV glidepath not coincident (VGSI Angle 3.00/TCH 49).		
*LNAV only.	ORIYE 1.9 NM to RW30C	OTRRR 3000	BOBRE 3400		
	*1.2 NM to RW30C		GP 3.00° TCH 42		
1.2 NM	0.7	3.1 NM	6 NM		
CATEGORY	A	B	C	D	E
LPV DA		1580-3/4	200 (200-3/4)		
LNAV/VNAV DA		1630-7/8	250 (300-7/8)		
LNAV MDA	1800-1	420 (500-1)	1800-1 1/8	420 (500-1 1/8)	
CIRCLING	1880-1	496 (500-1)	1880-1 1/2	2000-2	2040-2 1/4
			496 (500-1 1/2)	616 (700-2)	656 (700-2 1/4)



SW-4, 15 MAY 2025 to 12 JUN 2025

SW-4, 15 MAY 2025 to 12 JUN 2025

MIRL Rwy 12R-30L
HIRL Rwys 12L-30R and 12C-30C
REIL Rwys 12L and 30R