

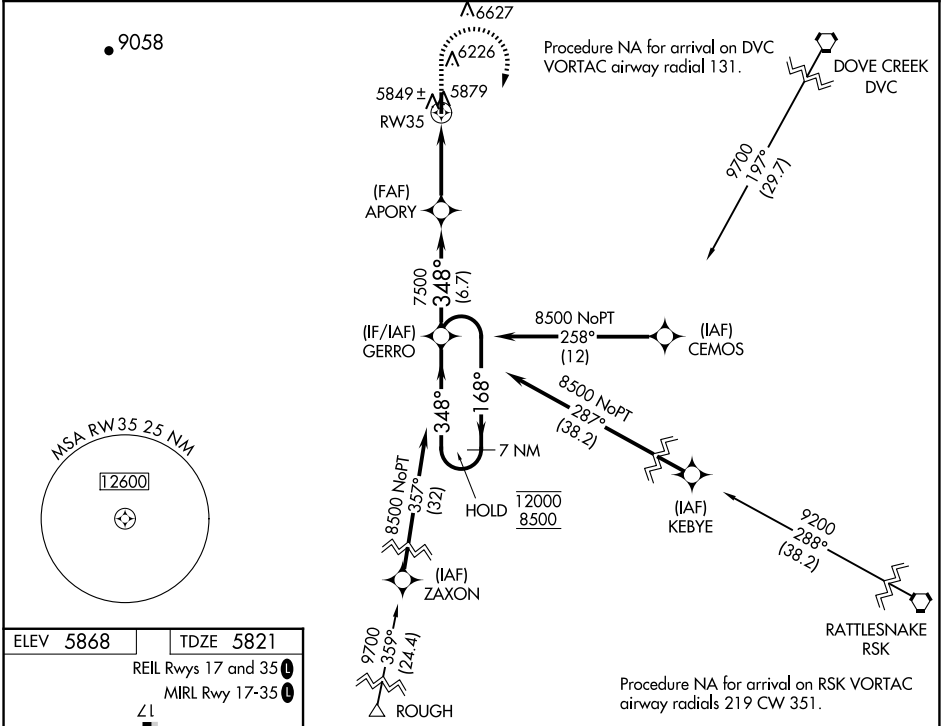
WAAS CH <b>63024</b> <b>W35A</b>	APP CRS <b>348°</b>	Rwy Idg TDZE Apt Elev	<b>5781</b> <b>5821</b> <b>5868</b>
--	------------------------	-----------------------------	---

# RNAV (GPS) RWY 35

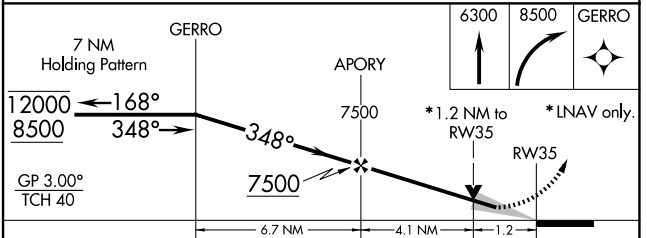
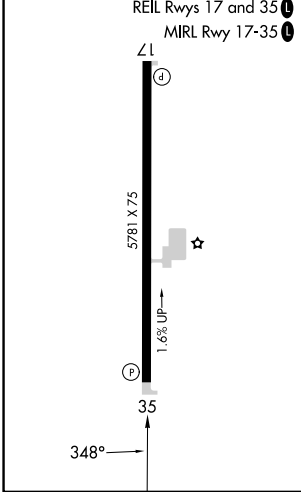
BLANDING MUNI (BDG)

RNP APCH.	MISSED APPROACH: (Do not exceed 165K until GERRO) Climb to 6300 then climbing right turn to 8500 direct GERRO and hold.
<p>▼ For uncompensated Baro-VNAV systems, LNAV/VNAV NA below -26°C or above 54°C.</p> <p>▲</p>	

AWOS-3PT <b>127.75</b>	DENVER CENTER <b>127.55 354.05</b>	UNICOM <b>122.8 (CTAF) 0</b>
---------------------------	---------------------------------------	---------------------------------



ELEV 5868	TDZE 5821
-----------	-----------



CATEGORY	A	B	C	D
LPV DA	6071-1	250 (300-1)		NA
LNAV/VNAV DA	6077-1	256 (300-1)		NA
LNAV MDA	6200-1	379 (400-1)	6200-1¼ 379 (400-1¼)	NA
CIRCLING	6440-1 572 (600-1)	6540-1 672 (700-1)	6760-2¾ 892 (900-2¾)	NA

SW-4, 15 MAY 2025 to 12 JUN 2025

SW-4, 15 MAY 2025 to 12 JUN 2025